

"Dreadnought" could fire her guns over a distance of 15 miles (26,400 yards), and that in firing over such a range, the trajectory of the shell would reach a height of 16,500 feet—more than 2,000 feet higher than Pike's Peak in the Rocky Mountains. Among the illustrations will be found one of the "Dreadnought" cleared for action aft, showing two pairs of 12-inch guns trained over the port broadside. There are also shown the model ships at which gunners under training are taught to fire, the models traveling on a railway, and rising and falling like a ship at sea.

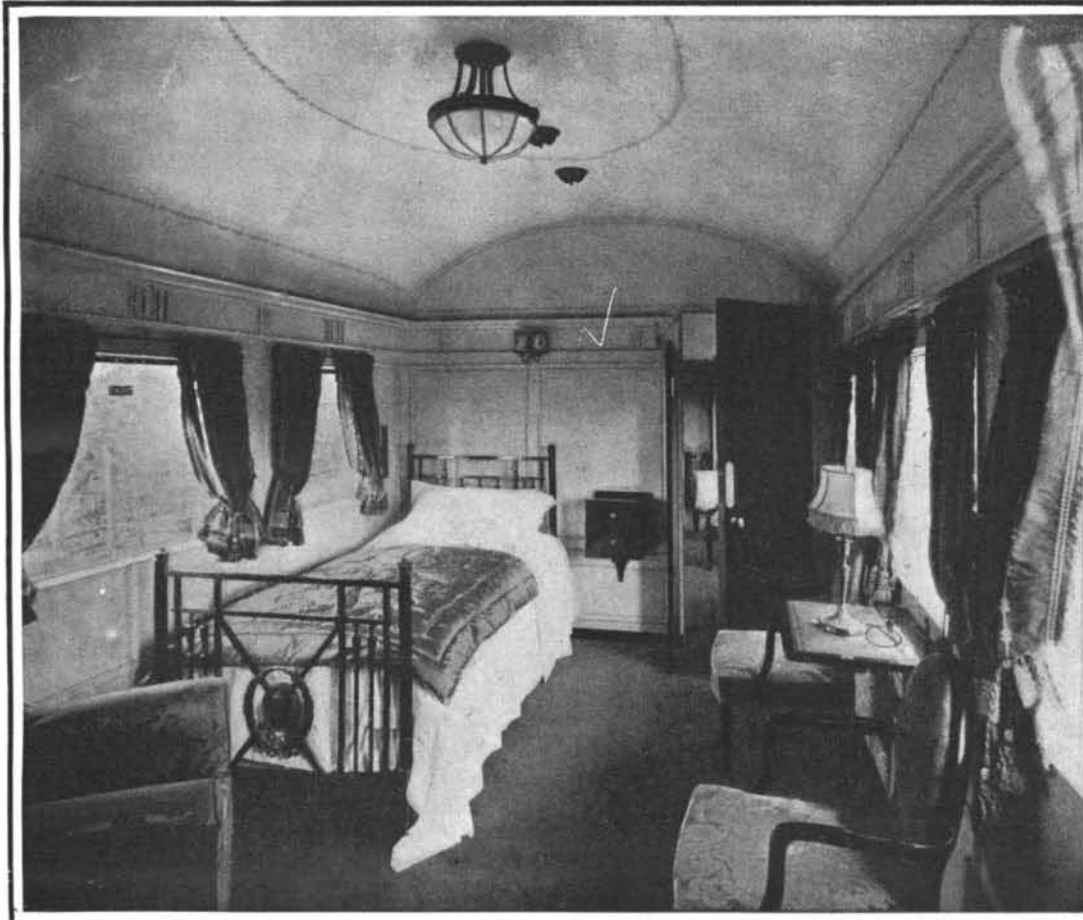
HOW ENGLISH ROYALTY TRAVELS.

BY F. C. COLEMAN.

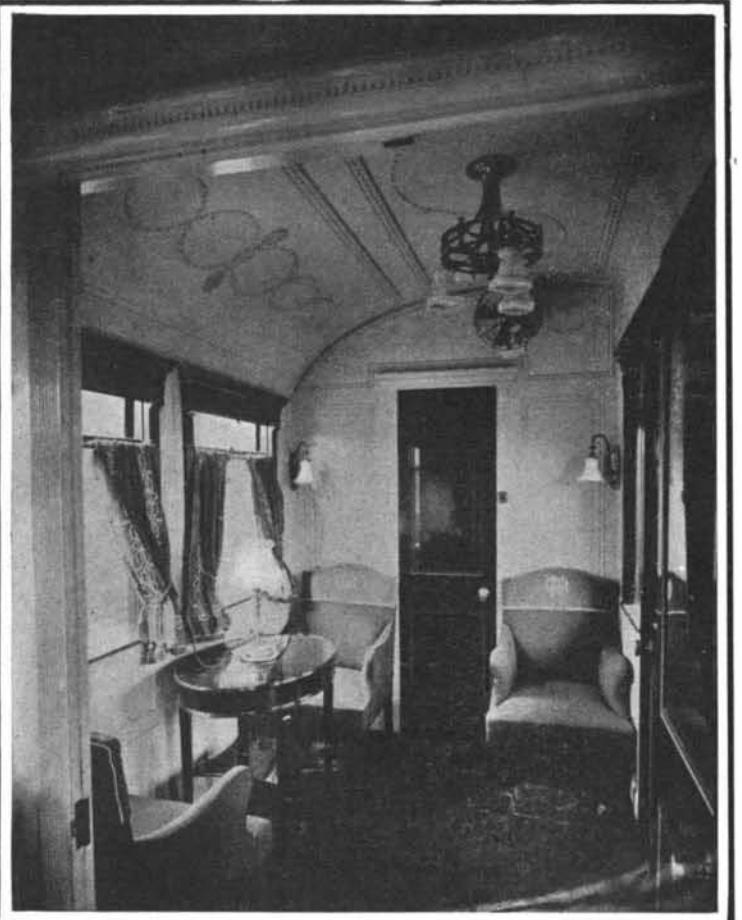
The three railway corporations (Great Northern, North-Eastern, and North British) controlling the East Coast route between London and Scotland, have just recently completed a new and luxuriously fitted royal train for the exclusive use of their Majesties King

center of the bottom panels is ornamented with his Majesty's cipher. On each side of the doors are gilt grip handles, extending from the cornice to the floor. The outside panels are of specially selected figured teak, and the center panel bears his Majesty's coat of arms. The roof is elliptical, and the outside appearance of the coach conforms generally to the standard type of the Great Northern and East Coast joint stock. The windows are of beveled plate glass, and are balanced so that they can very easily be lowered or raised. Commencing at one end, the saloon is divided as follows: Entrance balcony; smoke room; day saloon; bedroom or dining room; dressing room; attendant's compartment. The balcony is paneled with richly figured teak and has a white paneled ceiling. The smoking room is 10 feet long and decorated in Jacobean style; the walls are of oak inlaid with boxwood and dark pollard oak. The furniture consists of two armchairs and a large settee, upholstered in

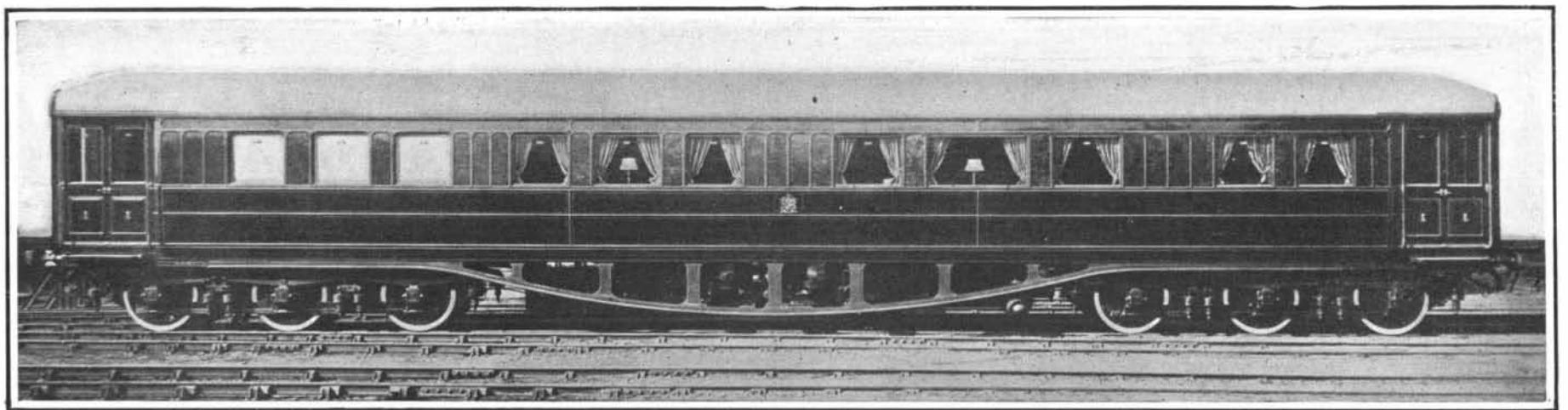
ture being in mahogany inlaid with kingwood, and covered with fine old rose-colored silk damask with green silk embroidered cushions. When used for day journeys, the bed is taken out and the compartment is converted into a dining room. The dressing room, which is 8 feet long, is paneled and enameled white. Next to the dressing room is the lavatory, the floor of which is covered with inlaid cork parquet flooring, and the walls are of fine Italian Cipolino marble cross-banded with white statuary marble. The attendant's compartment is fitted up with electrically heated kettles, urns, etc., and a switchboard for controlling the lighting and heating of the carriage. In order to give uniformity of effect, the whole of these rooms, with the exception of the attendant's compartment, are carpeted alike with a fine plain Saxony pile old rose carpet, and all curtains and blinds are of soft green silk with white silk embroidery. In addition to electric radiators, the saloon is heated by means of warmed



The King's bedroom on the royal car.



A corner of the special saloon for the royal suite and guests.



The royal car is 67 feet long, 9 feet wide, and 12 feet 11 inches high from rail level to roof. The strong steel underframe adds to the car's collision-resisting ability.

HOW ENGLISH ROYALTY TRAVELS.

Edward VII. and Queen Alexandra and other members of the British royal family. Hitherto, when the royal family have traveled over portions of the East Coast route, the train built some years ago at the London and North-Western Company's works at Wolverton has been utilized; but now the East Coast companies are in possession of their own special train. Her Majesty's saloon has been constructed at the York Carriage Works of the North-Eastern Railway Company, while his Majesty's carriage and all the other vehicles forming the royal train have been constructed at the Great Northern Railway Company's works at Doncaster. The King's saloon, exterior and interior views of which are given herewith, is 67 feet in length over the body, 9 feet wide, and 12 feet 11 inches high from rail level to top of roof. It is constructed of teak, with a steel underframe, and is carried on two six-wheeled bogies. Entrance is obtained from double doors, opening inward at each end; the moldings round the panels and windows are of gilt brass, and the

reindeer plush hide. The fittings are of oxidized silver. The day saloon, which is 17½ feet long, is in Louis XVI. style, and the walls are of highly polished sycamore inlaid with trellis lines of pewter and light mahogany. The furniture, which is of light French mahogany inlaid with pewter and box, upholstered with silk brocade, consists of two armchairs, a large settee, and four smaller chairs. There is also a writing table, which is fitted with adjustable shaded electric lights. The use of pewter is a revival of an old French method, which has a very pretty effect in conjunction with mahogany. Both the day and smoking rooms are lighted by rows of tubular electric lamps, concealed behind the cornices on each side, giving a very soft and restful light. There are also corner brackets in the smoking room, and handsome gilt wall brackets in the day compartment, the lights in the latter being shaded with hand-painted silk screens. The bedroom, or dining room, is 14 feet long, and the walls are paneled and enameled white; the furni-

air, which is delivered into the various compartments through ducts from electric blowers situated in the attendant's compartment. Ventilation is also afforded in the same way, and the air from the roof ventilators is extracted by means of electric exhausters. The decoration and furnishing have been carried out by Messrs. Waring & Gillow, and Messrs. J. Stone & Co.'s system of lighting and ventilation has been fitted. In addition to the saloon for his Majesty the King, two special saloons have been constructed for his Majesty's suite and friends, which are vestibuled on to the royal saloon. These saloons are carried on four-wheeled bogies of special design with 10-foot wheel base. The vehicles are 58 feet 6 inches long, and are fitted with easy chairs and couches upholstered in green tapestry. The partitions are so arranged that each of the saloons can be made into four bedrooms. The walls are enameled white, and the doors are of richly-figured mahogany. All the electric fittings, electroliners, etc., are of tasteful design, and gilt, with white silk shades,