

EBONITE

PAINT-VARNISH

Ebonite is elastic. It is used successfully on bridges and trestles where expansion and contraction is great, and does not crack or flake off.

Ebonite is heatproof. It gives excellent results on boiler fronts.

Ebonite is weatherproof. That's why it does well on tin roofs—better by far than any so-called roof-paint.

Ebonite is proof against acid fumes. Eleven years at a railway station and still in good condition.

Ebonite is durable. Ask us about the roof of the Globe Hotel at Lancaster. Our free booklet tells the story. The low price of Ebonite will astonish you.

Sample and booklet free.

BUCHANAN FOSTER CO.
452 Chestnut Street
PHILADELPHIA, PA.

HOW TO MAKE AN ELECTRICAL Furnace for Amateur's Use.—The utilization of 110 volt electric circuits for small furnace work. By N. Monroe Hopkins. This valuable article is accompanied by detailed working drawings on a large scale, and the furnace can be made by any amateur who is versed in the use of tools. This article is contained in SCIENTIFIC AMERICAN SUPPLEMENT, No. 1182. Price 10 cents. For sale by MUNN & CO., 361 Broadway, New York City, or by any bookseller or newsdealer.

Prest-O-Lite

Ready Made Gas for Auto Lights

With generate the gas, purify and clean it thoroughly, dry and cool it, and for convenience in handling and carrying have condensed in small tanks. For instant use.

0000

This gas we call Prest-O-Lite, because all you have to do when you need the light is turn the key of the supply valve, and a lighted match to the burner tops and presto! You have light!

0000

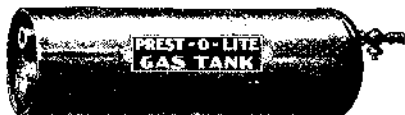
A small Prest-O-Lite tank will supply two large lamps for forty hours—a large tank two lamps for seventy hours. When a tank is empty, all you have to do is take it to any of our 400 Supply Stations, (you will find one in every important city of the United States) pay the cost of recharging and get a new tank filled and ready for instant use. Five minutes is time enough to detach an empty tank and replace it with a full one.

0000

Write for our book "Ready Made Gas for Auto Lights" and read how and why Prest-O-Lite is the most economical, safe, convenient and dependable light ever invented for use while traveling.

0000

We gladly forward a copy of our book postpaid by return mail upon receipt of your request—letter or post card. Address



THE PREST-O-LITE CO.
Dept. 323 Indianapolis, Ind.

60 YEARS' EXPERIENCE

PATENTS

TRADE MARKS
DESIGNS
COPYRIGHTS &c.

Anyone sending a sketch and description may quickly ascertain our opinion free whether an invention is probably patentable. Communications strictly confidential. HANDBOOK on Patents sent free. Oldest agency for securing patents. Patents taken through Munn & Co. receive special notice, without charge, in the

Scientific American.
A handsomely illustrated weekly. Largest circulation of any scientific journal. Terms, \$3 a year in advance. Single copies, 10 cents. Sold by all newsdealers.
MUNN & Co. 361 Broadway, New York
Branch Office, 625 F St., Washington, D. C.

and intimate acquaintance with the labor problems of the country. The labor troubles, defeats, and victories of ancient times are interestingly recounted in the first and second of these lectures. The third reviews great modern labor battles, beginning about 1877 with the B. & O. and Pennsylvania strikes, and including the anthracite strikes of 1900 and 1902.

METALLURGICAL CALCULATIONS. By Joseph W. Richards, A.C., Ph.D. Part I. New York: McGraw Publishing Company, 1906. 8vo.; pp. 208. Price, \$2.

Prof. Richards' book forms one of the most important steps in the application of science to metallurgy. It is a reprint of the serial running in "Electrochemical and Metallurgical Industries," which, however, has been largely elaborated and brought up to date. A serial which is now appearing will be published as Part II. and a later serial as Part III., thus completing the work. The treatment of the subject is logical and clear, though, unfortunately, the book is lacking in reference to other literature on the subject.

STEAM TURBINE ENGINEERING. By T. Stevens and H. M. Hobart. New York: The Macmillan Company, 1906. 8vo.; pp. 814; 516 illustrations. Price, \$6.50.

Messrs. Stevens and Hobart's book is undoubtedly the outcome of a vast amount of patient and extensive research and investigation. It contains a remarkable collection of data with reference to steam turbines gathered from all sources in Europe and America. A large part of this information, in addition to being tabulated, has been plotted in curves. Besides the extraordinarily complete collection of statistics given, the authors have also provided many illustrations showing the destructive characteristics of the different leading types of turbines. The whole is elaborated by clearly-written and comprehensive text.

A SCHEME FOR THE PROMOTION OF SCIENTIFIC RESEARCH. By Walter B. Priest. London: Stevens & Sons, Ltd., 1905. 8vo.; pp. 62.

It is the object of the author to submit for consideration proposed legislative provisions, incorporating means whereby incentives means to scientific research may be made operative by the agency of law in those directions wherein the prosecution of such research may lead to results of general utility. The plan is quite an elaborate one.

MODERN LOCOMOTIVE ENGINEERING WITH QUESTIONS AND ANSWERS. By Calvin F. Swingle, M.E. Chicago: Frederick J. Drake & Co., 1905. 16mo.; pp. 630. Price, \$3.

This handsomely gotten-up pocket-book is a plain, practical treatise on the construction, care, and management of modern locomotives. Boiler construction as applied to locomotives is dealt with in detail. All the leading types of valves and valve gear are fully described. Valve setting is illustrated in all its details. An entire chapter is devoted to the study of the indicator and its application to the locomotive. Compound locomotives receive special attention. Locomotive equipments, including electric headlights and mechanical stokers, are not forgotten. Particular attention is given to the important subject of breakdowns and what to do in case of emergency. The air brake is fully described. The book is admirably illustrated, and is a distinct contribution to the subject.

PRACTICAL GILDING, BRONZING, AND LACQUERING. By Frederick Scott-Mitchell. London: The Trade Papers Publishing Company, Ltd., 1905. 12mo.; pp. 175.

While there is a number of works in which the subject of gilding, bronzing, and lacquering is treated, there has up to the present time been no convenient and concise book treating this branch of the decorative art exclusively. The book here discussed is largely based on writings in various publications, and is excellently edited by an expert on the subject, Frederick Scott-Mitchell, who has been associated with the painting and decorating trades for over a quarter of a century.

THE PHANTOM OF THE POLES. By William Reed. New York: Walter S. Rockey Company, 1906. 12mo.; pp. 283. Price, \$1.50.

NAVAL POCKETBOOK. Founded by Sir W. Laird Clowes. Edited by Geoffrey S. Laird Clowes. London: W. Thacker & Co., 1907. Pocket edition. Pp. 965. Price, \$3.

LES TREMBLEMENTS DE TERRE. Leur Origine Electrique Possible. Les Tremblements de Terre au Pérou. Par Emile Guarini. Paris: H. Dunod et E. Pinat, 1906. Pp. 26. Price, 50 cents.

POOR'S RAILROAD MANUAL APPENDIX AND DIARY. Special Edition, 1906. 12mo.; pp. 284.

THE INFINITY OF THE STARRY UNIVERSE. By John Lowry Adams. Sydney: Turner & Henderson, 1906. 8vo.; pp. 39, 4 plates, 2 diagrams.

THE MILKY WAY. The Solution of the Problem of the Milky Way, Showing it to be a Special Shadow Effect. By John Lowry Adams. Sydney: Turner & Henderson, 1906. 8vo.; pp. 44, 12 figures.

TOURING TIME IS Rambler TIME



THE SUCCESS of your trip is entirely dependent upon the reliability of your car. Then, as at no other time, is a capacity for steady service under all conditions of such paramount importance.

The production of a car of absolute dependability has ever been the primal object of the Rambler factory, and the thousands of these cars now in constant service are ample proof of successful efforts.

Built in seven models, \$1,200 to \$3,000

Main Office and Factory, Kenosha, Wis.

Branches:

Chicago, 302-304 Wabash Ave.

Boston, 145 Columbus Ave.

New York Agency, 38-40 W. 62nd St.

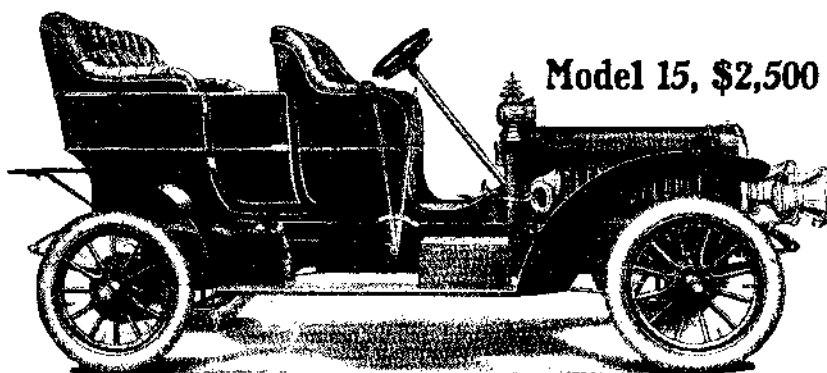
Milwaukee, 457-459 Broadway

Philadelphia, 242 N. Broad St.

San Francisco, 31 Sanchez St.

Representatives in all leading cities.

Thomas B. Jeffery & Company



Model 15, \$2,500

LET US BE YOUR FACTORY
WRITE FOR ESTIMATE ON ANY ARTICLE YOU WANT MANUFACTURED
STAMPINGS, MODELS, EXPER. WORK
WRITE FOR FREE BOOKLET
THE CLOBE MACHINE & STAMPING CO.
970 Hamilton St., Cleveland, O.

ICE MACHINES Corliss Engine, Brewers and Bottlers Machinery. **THE VILTER MFG. CO.** 899 Clinton St., Milwaukee, Wis.

MODELS & EXPERIMENTAL WORK. Inventions developed. Special Machinery. **E. V. BAILLARD.** 24 Frankfort Street, New York.

RUBBER Expert Manufacturers Fine Jobbing Work
PARKER, STEARNS & CO., 228-229 South Street, New York

OLD GOLD, SILVER AND PLATINUM BOUGHT Ship to us and we will remit cash immediately.
ASHER KLEINMAN, 250 8th Ave., N. Y. City, N. Y.

WORKING AND PATENT DRAWINGS. **G. M. MAYER, M.E.,** 131 Monmouth Bl., Chicago, Ill.

DRYING MACHINES. S. F. WORRELL, Hannibal, Mo.

THE SCHWEDTLE STAMP CO. STEEL STAMPS, LETTERS & FIGURES. BRIDGEPORT CONN.

Experimental & Model Work Ctr. & advice free. Wm. Gardam & Son, 45-51 Rose St., N.Y.

NOVELTIES & PATENTED ARTICLES MANUFACTURED BY CONTRACT. PUNCHING DIES, SPECIAL MACHINERY.
E. KONIGSLOW STAMPING & TOOL WORKS, CLEVELAND, O.

Magical Apparatus. Grand Book Catalogue. Over 700 engravings 25c. Parlor Tricks Catalogue, free.
MARTINKA & CO., Mfrs., 496 Sixth Ave., New York.

INVENTORS We manufacture METAL SPECIALTIES of all kinds, to order; largest equipment; lowest prices. Send sample or FREE model for low estimate and best expert advice.
THE EAGLE TOOL CO., Dept. A, Cincinnati, O.

MASON'S NEW PAT. WHIP HOISTS save expense and liability incident to Elevators. Adopted by principal storehouses in New York & Boston
Manfd. by **VOLNEY W. MASON & CO., Inc.** Providence, R. I., U. S. A.

Are you interested in Patents, Model or Experimental work? Our booklet entitled **WHAT WE DO—HOW WE DO IT** will be sent to you on request.
KNICKERBOCKER MACHINE WORKS, Inc., 8-10-12 Jones Street, New York.

Watch Making and Engraving School We teach the trade thoroughly in three to six months. You can earn money while learning. Positions guaranteed to graduates. Terms most reasonable.
Kansas City Polytechnic Institute
1021 Grand Avenue, Kansas City, Missouri

WANTED.—Two Marine Engine and Boiler Draftsmen, \$6.00 per diem. Naval Station, Cavite, P. I. A competitive examination will be held for the above positions July 24, 1906. For further information address "Commandant," Navy Yard, League Island, Pa.

LEARN PLUMBING and earn \$5.00 a day. A few months' study at our school under the supervision of expert plumbers will enable you to earn this salary. We have a special department to secure positions for students after graduating. Write to-day for FREE CATALOGUE.
ST. LOUIS TRADE SCHOOL, 3972 Olive Street, St. Louis, Mo.

Start A Mail Order Business. Acknowledged by shrewd business men one of the most pleasant and profitable business in the world. Stop working for others—big profits—money comes with orders—our plan for starting beginners is a sure winner and offers you a chance to get in business for yourself. Full particulars for stamp.
A. FRANKLIN-HOWARD CO., Kansas City, Mo.

STEEL TYPEWRITER TYPE We make, or will furnish complete outfit for making, all styles. **NEW YORK STENCIL WORKS,** 100 Nassau Street, New York.

SHOP ROOM TO LET FULLY EQUIPPED MACHINE SHOP
S. A. NICHOLAS, 30 Greenwich Avenue

WE MAKE GOOD models. We do experimental work, and do it good. We manufacture and sell electrical and mechanical apparatus at the correct prices. Agents wanted everywhere.
United Electrical Mfg. Co., 53 Vesey Street, New York.

LEARN WATCHMAKING We teach it thoroughly in as many months as it formerly took years. Does away with tedious apprenticeship. Money earned while studying. Positions secured. Easy terms. Send for catalog.
ST. LOUIS WATCHMAKING SCHOOL, St. Louis, Mo.

AUTOMOBILE INSURANCE Every owner of an Auto should insure his car against loss or damage, whether in actual riding or in transit. We fully insure you against such loss or damage, however sustained. Premiums low. Full reliability.
H. W. BEALS, 76 William Street, New York

MAKE MONEY Giving Moving Picture Shows. Free Catalog.
Eugene Cline, Dearborn & Randolph Sts., Chicago.

Electrical Engineering and Experimental Work of Every Description
We have every facility for producing first-class work promptly. Our factory is equipped with modern machinery throughout.

C. F. SPLITDORF
Engineering Dept. 17-27 Vandewater St., N. Y. City

DO YOU USE GRINDSTONES? If so we can supply you. All sizes mounted and unmounted, always kept in stock. Remember, we make a specialty of selecting stones for all special purposes. Send for catalogue "1."
The CLEVELAND STONE CO.
2d Floor, Wilshire, Cleveland, O.