

**MANUFACTURERS!**  
You can make and market the  
**GEM CITY WIND MILL**  
at prices so low as to guarantee large returns. Steel and iron construction throughout; triangular shaped, open, steel tower; ball-bearing, sensitive turn table; wheel always to wind; few working parts; easily lubricated; best—simplest—cheapest—strongest. Patents for sale—Write today.  
**Dayton Supply Co., Dayton, Ohio.**

**HANG IT**  
upside down if you like, and it won't spill a drop. Of course it's the "GEECEE" Dry Storage Battery, which during the recent New York Show was used in all the demonstration cars of the following firms: The Motor Works, Berkshire Automobile, York Automobile, etc.  
An ideal battery for all kinds of ignition work, small incandescent lights, dental engines, cameras, wireless telegraph, small motors, etc. Write for '06 Catalog and trade prices.  
**Royal Battery Co., 143 Chambers St., N. Y.**

**Acetylene Gas Users**  
Should get **ALCO BURNERS** for House Lighting or Auto Lamps. Longest life. Highest candle-power. \$2.10 dozen.  
**AMERICAN LAVA COMPANY**  
Chattanooga, Tenn.

**THE BERKEFELD FILTER**  
The Standard of the World  
The only filter removing typhoid and cholera bacilli from the water. Tested and recommended by Bacteriologists all over the world. The greatest invention in the filter technic during the last ten years. The filter gives water in small and large quantities according to the sizes. Easily cleaned, filter cylinders sterilized by boiling in water. Send for circulars to  
**BERKEFELD FILTER CO.**  
4 Cedar Street, New York

**Colleges and Schools**  
find our Castings and Parts for Motors, Dynamos, Dynamotors, A. C. Rectifiers, etc. (1-15th to H. P.) exactly what they need for demonstrating the construction and operation of such machines. We sell outfits complete or a single piece at a time. Complete outfits from \$35.00 up, with full instructions and blue prints. Just right for Amateurs, Electricians and Experimenters. Bulletin W mailed free.  
**PARSELL and WEED, 129-131 W. 31st St., N.Y. City**

Used by forty of the leading Automobile and motor boat manufacturers. Suitable for any gas or gasoline engine using make and break or jump spark ignition.  
**EVERY BATTERY GUARANTEED** to give satisfaction or purchase money refunded.  
**WITHERBEE IGNITER CO.**  
27-31 Thames St. - NEW YORK

**ELECTRONS AND THE ELECTRONIC**  
Theory are discussed by SIR OLIVER LODGE in SCIENTIFIC AMERICAN SUPPLEMENTS 1428, 1429, 1430, 1431, 1432, 1433, 1434. Price 10 cents each, by mail. Munn & Company, 361 Broadway, New York City, and all newsdealers.

**CUBA**  
Beyond the Line Where Snow Flies  
Tropical climate gives you "that luxurious feeling" which only comes with complete rest.  
**THE HAVANA LIMITED**  
A train de luxe, leaves Chicago Friday afternoons at 3. St. Louis 9.40 p.m., arrives Mobile DOCK after dinner Saturdays, when you are transferred direct to the New Palatial Steamship "Prince George," arriving Havana in time for breakfast Monday.  
The equipment of the train and the accommodations on the boat are the best offered winter tourists.  
**ROUTE** Chicago & Alton Ry. Mobile & Ohio R. R. Munson Steamship Line  
May we have an opportunity of elaborating on the advantages of a Cuban trip this winter?  
Address **GEO. J. CHARLTON** Gen'l Pass'g Agt., Chicago & Alton Ry. CHICAGO, ILL.

**60 YEARS' EXPERIENCE**  
**PATENTS**  
TRADE MARKS  
DESIGNS  
COPYRIGHTS & C.  
Anyone sending a sketch and description may quickly ascertain our opinion free whether an invention is probably patentable. Communications strictly confidential. HANDBOOK on Patents sent free. Oldest agency for securing patents. Patents taken through Munn & Co. receive special notice, without charge, in the

**Scientific American.**  
A handsomely illustrated weekly. Largest circulation of any scientific journal. Terms, \$3 a year; four months, \$1. Sold by all newsdealers.  
**MUNN & Co. 361 Broadway, New York**  
Branch Office, 625 F St., Washington, D. C.

Hats and caps, men's and women's, R. J. Hunter	49,824
Hose supporters, C. J. Higley	49,822, 49,823, 49,858
Insulating compound, Standard Underground Cable Co.	49,876
Knit hosiery and underwear, M. & C. Mayer, J. Mayers	49,908, 49,909
Knitted hosiery, undershirts, and drawers, J. W. Mettler	49,830
Kummel, Charles Jacquin et Cie	49,781
Lard, F. G. Cromwell	49,898
Laxative fruit preparation, effervescent, H. J. Mayers	49,865
Lead, white, National Lead Company of Massachusetts	49,866
Leather for boots and shoes, upper, Thayer Koss & Co.	49,797
Loom pickers, Norfolk Loom Picker Co.	49,868
Lubricants and lubricant stock, cylinder, Conewango Refining Co.	49,882
Magazines, Criterion Publishing Co.	49,821
Medical ointment, R. M. Connable	49,806
Medicinal preparations, W. R. Warner & Co.	49,820
Metal polishes, J. F. Wulzen & Co.	49,896
Milling cutters, Standard Tool Co.	49,822
Molasses, Eastern Refining Co.	49,818
Oil, olive, Thomas McMullen & Co.	49,810
Oil, painting, staining, and graining, James B. Sipe & Co.	49,863
Olives, S. J. Valk & Bros.	49,824, 49,825
Overalls, E. G. Sanders	49,874
Packing, machinery, C. A. Daniel	49,808
Paints, enamels, and bronzing liquids, certain named, Gerstendorfer Bros.	49,856
Pajamas and night robes, T. J. Maxwell & Co.	49,881
Paper stock, ground wood and wood pulp for, Aspegren & Co.	49,790
Periodical or magazine, trade journal, Lord & Nagle Co.	49,828
Phosphoric solutions, Rumford Chemical Works	49,872
Piano, players, combination pianos, and parts thereof, Wilcox & White Co.	49,892
Pianos, Sterling Co.	49,890
Pills, purgative, W. H. Constock Co.	49,819
Powders, headache, R. S. Starks	49,816
Precious stones for jewelry, imitations of, Kegnell, Bigney & Co.	49,870
Pulleys, blocks, and parts thereof, Weston & Lockport Block Co.	49,849
Remedies, eye, Murine Eye Remedy Co.	49,888
Remedy for children's colic and cholera infantum, J. C. Franklin's Sons & Co.	49,890
Remedy for rheumatism, C. Carow	49,845
Remedy, liquid, G. M. Sloan	49,887
Sausage, stuffed, and lat presses, National Specialty Manufacturing Co.	49,867
Seeds, certain named, Albert Dickinson Co.	49,838
Shellac, first coat or substitute for, Glidden Varnish Co.	49,884
Shirts, dress and negligee, Manifest Shirt Co.	49,801
Shoes, boots, and slippers, leather, J. G. Brandt Shoe Co.	49,830
Shovels, spades, scoops, and spading forks, Supple Hardware Co.	49,879
Silk, embroidery and knitting, J. Pearsall & Co.	49,795
Silk piece goods having a rough surface, Rogers & Thompson	49,871
Silver plated hollow ware, International Silver Co.	49,826
Starch for laundry purposes, lump, J. C. Hubinger Bros. Co.	49,893
Starch, laundry, J. C. Hubinger Bros. Co.	49,892
Steel, Park Steel Co.	49,869
Steel ware, stamped, Jacob J. Vollrath Manufacturing Co.	49,799
Stove polish, Eye Shine Polish Co.	49,852
Stoves and ranges, Liberty Stove Co.	49,907
Stoves, heating stoves, and ranges, cook, A. Baldwin & Co.	49,897
Telephone sets, Baird Manufacturing Co.	49,847
Tonic, J. Corate	49,807
Tonic and restorative, uterine, Rio Chemical Co.	49,834
Tonic, phosphate, Bios Laboratory Co.	49,881
Tonics, nervine, and sedatives, Dr. Miles Medical Co.	49,817
Twist drills, Standard Tool Co.	49,821
Varnishes, David B. Crockett Co.	49,883
Watch movements, Hampden Watch Co.	49,819, 49,820
Whiskies, all kinds of, S. C. Herbst	49,801
Whisky, Mileslawsky & Kraus	49,794
Whisky, T. W. Samuel's Disty	49,796
Whisky, Ginter Grocery Co.	49,800
Whisky, J. & A. Freiberg	49,810
Whisky, J. J. Hagerty & Co.	49,812
Whisky, J. A. Bekel Company of Baltimore City	49,813
Whisky, Hoffheimer Bros. Co.	49,818
Wines, S. S. Pierce Co.	49,873
Yeast, crumb, Yest Yeast Co.	49,828

**LABELS.**

"Benaid," for toilet paper, Scott Paper Co.	12,680
"Bennette," for coffee, Fort Smith Commission Co.	12,671
"Callier's Cut Leaf Cream Candy," for candy, J. B. Callier	12,675
"Columbia Phonograph Co., Columbia Records," for sound records, Columbia Phonograph Co.	12,683
"Edstrom's Lung Gas," for medicine, O. E. Edstrom	12,677
"Havana Bit," for cigars, P. Wohl & Co.	12,668
"Hazel Patch," for cigars, O. A. Leistikow	12,670
"Little Nemo's Barefoot Sandal," for sandals, H. Jacobs & Sons	12,681
"McCarthy's Winner," for dry plates, McCarthy Dry Plate Co.	12,682
"Mrs. Wuslow's Borated Violet Talcum," for toilet powder, M. Chubb	12,676
"Penn's Plasters," for adhesive plasters, Penn Chemical Co.	12,678
"Prince's Liniment The Great Panacea," for liniment, A. E. Lynch	12,679
"61" for cigars, Bethany Cigar Co.	12,669
"Soda Mint Water," for carbonated water, Soda Mint Water Co.	12,672
"Sponge-Ate The Greatest Bait," for confectionery, Hook & Crownfield	12,674
"Syned," for eyeglasses, C. H. Keyes	12,673

**PRINTS.**

"Adler's Spring and Summer Clothes," for men's spring apparel, David Adler & Sons Clothing Co.	1,580
"An Easy Shave," for shaving soap, O. F. Woodward	1,576
"Fit-Easy," for shoes, A. S. Bacon	1,578
"Hammer the Hammer," for revolvers, Iver Johnson's Arms and Cycle Works	1,581
"Men's Apparel," for men's apparel, W. C. Both	1,579
"Sauer's Famous Flavoring Extracts," for flavoring extracts, C. F. Sauer Co.	1,573
"The Delicious," for candy, Rochester Candy Works	1,575
"The First Hands," for flour, Washburn Crosby Co.	1,574
"The Knox-All Hat," for hats, P. A. Lux	1,577

A printed copy of the specification and drawing of any patent in the foregoing list, or any patent in print issued since 1863, will be furnished from this office for 10 cents, provided the name and number of the patent desired and the date be given. Address Munn & Co., 361 Broadway, New York.  
Canadian patents may now be obtained by the inventors for any of the inventions named in the foregoing list. For terms and further particulars address Munn & Co., 361 Broadway, New York.

# FRANKLIN

**Why are Franklins the most economical of all motor cars?**  
Because they give not only the best kind of service; but they give it longest; at the lowest operating and maintenance cost; and they give it every day in the year.

The kind of service Franklin cars give begins with an exceptionally efficient engine in which Franklin air-cooling creates the best-working temperature possible to obtain in a gas-motor cylinder;—a temperature that the Franklin auxiliary exhaust constantly maintains by freely discharging the hot gases of the explosion; before the main valve opens; thus positively preventing back-pressure and overheating; and saving the power commonly lost through burnt and leaky valves.

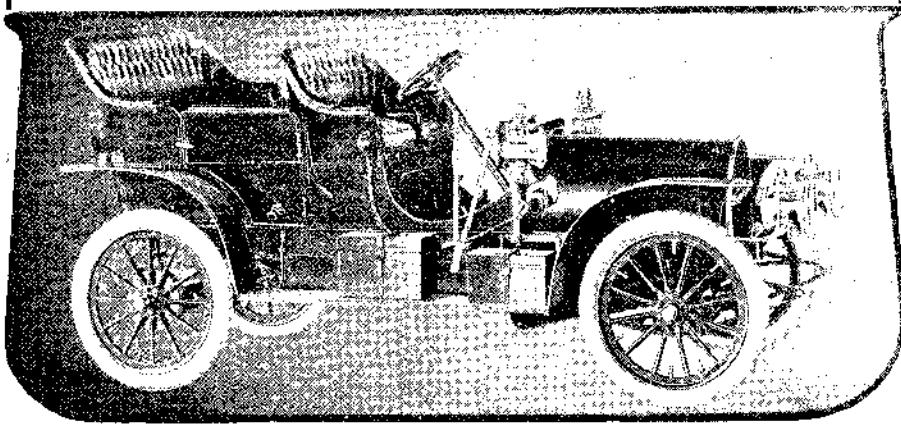
These qualities of Franklin cars give them genuine usable road ability far beyond that of any other cars of their weight, rating or price.  
The great length of service rendered by Franklin cars comes from the highest grade materials; and the most suitable construction of every part; as indicated by the high grade nickel-steel used; the sheet aluminum bodies and Hess-Bright ball-bearings.  
The extremely low running expense of Franklin cars is due, first, to the high engine efficiency which produces full power on remarkably small fuel consumption; next, to the strong, simple, flexible construction which reduces repair cost to the lowest terms; and thirdly, to the absence of water-cooling apparatus; getting rid of its superfluous weight and thus tremendously cutting down tire bills.

Franklin flexible wood sills and four full-elliptic springs absorb road shocks; thus saving the power ordinarily lost through vibration; and making this power more fully available by permitting necessary speed over rough roads with perfect comfort to the occupants of the car.

The final important item in the economy of Franklin cars is the fact that having no water about them they never can freeze. Their cost may be divided by 365 working days in every year—and one day more in leap year.

Write for the Franklin catalogue—at once the most sumptuous and most sensible motor book ever printed.  
**Four-cylinder Runabout \$1400 Four-cylinder Touring-car \$2800**  
**Four-cylinder Light Touring-car \$1800 Six-cylinder Touring-car \$4000**  
Prices f. o. b. Syracuse

**H. H. FRANKLIN MFG. CO., Syracuse, N. Y., M. A. L. A. M.**  
Type D. Four-cylinder Touring-car. 5 passengers. Air-cooled motor. 3-speed sliding gear transmission. 20" Franklin horse-power." Disc clutch. Force-feed oiler on dash. 100-inch wheel base. 1800 pounds. 45 miles per hour. Full head and tail-light equipment, \$2800.



**KING FOLDING CANVAS BOATS**  
Are lighter and more durable than wood. Puncture-proof; non-sinkable; cannot tip over. A revelation in boat construction. Can be carried anywhere by hand, on bicycle or in buggy, or checked as baggage. When not in use, Fold Up into a Package. Handsome catalog 6c. in stamps.  
**KING FOLDING BOAT CO., 688 North Street, KALAMAZOO, MICH.**

**STATIONARY ENGINEERS**  
desiring to fit themselves for better paying positions should send for 300-page handbook (FREE) describing our Stationary Engineering course, and cover for other courses, including Electrical, Mechanical and Civil Engineering, Architecture, Mechanical Drawing, Structural Drafting, Telephony, Textiles, etc.  
**American School of Correspondence, Chicago, Ill.**

**Signs, Boxes, Souvenirs & Novelties**  
of Aluminum in any number, style or design; lithographed metal signs, boxes, jars, etc. Enamelled Iron Signs of all colors. Designs, estimates and catalogue.  
N. J. Aluminum Co., 150 Nassau St., N. Y. H. M. Willis, Mgr.

**LET US BE YOUR FACTORY**  
WRITE FOR ESTIMATE ON ANY ARTICLE YOU WANT MANUFACTURED  
**STAMPINGS, MODELS, EXPER. WORK**  
WRITE FOR FREE BOOKLET  
**THE GLOBE MACHINE & STAMPING CO.**  
970 Hamilton St., Cleveland, O.

**MACHINERY AND SPECIAL PARTS BUILT ON CONTRACT**  
New devices developed; successful experimental work done speedily; skilled labor; good facilities; good value for your money.  
**J. R. ENGELMAN MFG. CO.**  
74 Hudson St. near Penn. Depot, Jersey City

**ICE MACHINES** Corliss Engine, Brewers and Bottlers Machinery. THE VILTER MFG. CO., 895 Clinton St., Milwaukee, Wis.

**MODELS & EXPERIMENTAL WORK.** Inventions developed. Special Machinery.  
**E. V. BAILLARD, 24 Frankfort Street, New York.**

**RUBBER** Expert Manufacturers Fine Jobbing Work  
**PARKER, STEARNS & CO., 228-229 South Street, New York**  
Models & Exper. Work, Gears, Dies, Tools, Small Machy. Scient. Insts. M. P. Schell, 506 Mission St., San Francisco

**MODELS & CHICAGO MODEL WORKS**  
ESTABLISHED 1867  
179 E. MADISON ST. CHICAGO, ILL.  
WRITE FOR CATALOGUE OF MODEL SUPPLIES

**Foot and Power Lathes**  
Send for a catalogue and prices  
Carroll-Harrison Machine Tool Co., Batavia, Ohio

**MODELS & INVENTIONS PERFECTED & GEARED**  
193 S. CLARK ST. CHICAGO.

**NOVELTIES and Patents required for English market.** Send samples and write W. TUCKER & COY., 16 and 17 Devonshire Square, London, E. C., England.

**Dies, Tools, Models and Special Machinery.** Metal specialties and Die-castings Manufactured.  
**HOEFT & MOORE, Chicago, U. S. A.**  
OFFICE: 529 FIFTH AVENUE WORKS: INDIANA & FRANKLIN STREETS

**STEEL TYPEWRITER TYPE**  
We make, or will furnish complete outfit for making, all styles. NEW YORK STENCIL WORKS, 100 Nassau Street, New York.

**WANTED MASTER MECHANIC**, competent to take charge of large general manufacturing plant, in New Jersey. First-class references required  
Address MECHANIC, 794 Broad St., Newark, N. J.

**MOTOR BOAT SUPPLIES** Batteries, Coils, Plugs, Whistles, Tools and all accessories. Catalog on request.  
**BECKLEY-RALSTON CO., 88 Michigan Av., Chicago.**

**MODEL AND EXPERIMENTAL WORK.** Electrical and Mechanical Instruments. Small Machy  
**EDWARD KLEINSCHMIDT, 82 W. Broadway, New York**

**TELESCOPES**  
SEND FOR CATALOGUE  
**W. D. MOGEY,**  
BAYONNE CITY, N. J.

**SETS OF CASTINGS OF MODEL ENGINES**  
SEND FOR 128 PAGE ILL. CATALOGUE.  
ALSO TOOLS, GEAR WHEELS & PARTS OF MODELS  
**GOODNOW & WIGHTMAN**  
Removed to 193 N. 11th Street.

**WANTED**  
TEN MILLION, FIRST QUALITY, 3-16 IN. STEEL BALLS  
Address **Richardson Ball Bearing Skate Co.**  
501 Wells St., Chicago, Ill.

**Watch Tacoma Grow!**  
POPULATION: 1900, 37,714.  
1906, 85,000.  
Leading manufacturing city of Pacific Northwest. Best steamship and railway terminals on Pacific Coast. Six additional transcontinental railroads entering Tacoma. Send ten cents in postage for illustrated literature to **SECRETARY, CHAMBER OF COMMERCE AND BOARD OF TRADE, Tacoma, Wash.**

**DON'T BUY GASOLINE ENGINES** UNTIL YOU INVESTIGATE "THE MASTER WORKMAN."  
all one-cylinder engines; revolutionizing gas power. Costs Less to Buy and Less to Run. Quickly, easily started. No vibration. Can be mounted on any wagon at small cost—portable, stationary or traction. Mention this paper. SEND FOR CATALOGUE. **THE TEMPLE PUMP CO., Mrs. Meagher & 15th Sts., Chicago.**  
A two-cylinder gasoline engine superior to THIS IS OUR FIFTY-SECOND YEAR.