

RECENTLY PATENTED INVENTIONS.

Of General Interest.

ANIMAL-TRAP.—J. KERNS, West New York, N. J. In the present patent the object of the inventor is to provide a new and improved animal-trap, more especially designed for trapping alive fish, crabs, and other animals, the trap being simple, easily set, and quick in action.

PLUG.—E. M. HALL, Raymondville, N. Y. Mr. Hall's present invention is an improvement in plugs for use in rolls of paper, and has for its object the provision of a novel construction whereby to prevent the plug from slipping out of the roll during storage and shipment of such paper-rolls.

DUMB-WAITER SHAFT.—G. GERARDT, New York, N. Y. In this patent the invention relates to masonry; and its object is to provide a new and improved dumb-waiter shaft or like structure formed mainly of building-blocks or tiles and arranged to insure the formation of light but exceedingly strong and durable walls.

CUFF-HOLDER.—A. P. GILLEN, Chicago, Ill. The invention relates more especially to that type of cuff-holders which are secured within the coat-sleeve and secure the cuff independently of the shirt-sleeve. The principal object is to provide a holder in which the cuff may be readily adjusted without changing the position of the holder within the sleeve. A further object is to provide a holder operated by pressure upon the outer surface of the sleeve and which is so constructed that it may be set and held in open position ready to receive the cuff, so it may be introduced and secured with great ease and rapidity.

DENTAL TOOL.—E. FORUIGNON, New York, N. Y. The inventor's object is the provision of a dental tool to be used for scaling off calcareous deposits from the teeth and also to enable the dentist to conveniently and quickly form and scrape a tooth-carrying rubber plate to accurately fit the same against the hard palate or roof of a person's mouth.

PAY-ROLL.—C. T. CHICHESTER, Placerville, Cal. The intention of the inventor is to provide a new and improved pay-roll for the use of merchants, contractors, lumbermen, or other employers of labor arranged to embrace a time-book, a ledger, and a receipt-book to show at a glance how an account between an employer and an employee stands at any time.

SINGLE-TRIGGER MECHANISM FOR DOUBLE-BARREL GUNS.—J. C. BROYLES, Birmingham, Ala. The invention relates to locks for double-barrel guns, and particularly to that class wherein a single trigger controls and operates both hammers. The trigger is so arranged that by sliding forward or back it is adapted to come in contact with the respective sears of the two hammers. Thus either barrel may be fired at will, according to the position in which the trigger is set, or the barrel may be fired successively without such shifting of the trigger.

PASTE FASTENING FOR RUGS OR CARPETS.—C. C. CONNER and T. GRIMLER, New York, N. Y. The invention of Messrs. Conner and Grimler relates to fastenings for rugs or carpets, their more particular object being to produce a fastening of suitable form to be held in place by paste and, if desired, to utilize a partial vacuum as an auxiliary means for securing the fastening in position.

SPRING-ROLLER.—W. A. HADEN, New York, N. Y. In this case the invention refers to improvements in spring-rollers particularly adapted for use with heavy shades, displaying fabrics, and the like. With a spring-roller as usually constructed it often happens that in rolling up, the end of the shade or other material will, through the spring force, pass over the roller several times, thus weakening the spring force and making it necessary to remove the roller to rewind the spring. The invention provides suitable means to obviate the above difficulties.

Hardware and Tools.

WRENCH.—H. PHELAN, Jimenez, Mexico. Mr. Phelan's invention relates to improvements in wrenches of the type having a fixed jaw and a sliding jaw, an object being to provide a wrench of this character that will be comparatively light yet strong and that may be quickly adjusted to a nut or pipe.

Prime Movers and Their Accessories.

EQUALIZING-GEAR FOR RECIPROCATING PRIME MOVERS.—M. NEUMAYER, New York, N. Y. The inventor's object is to provide a power-equalizing gear for prime movers having a pair of cylinders and pistons reciprocating therein, arranged to give the piston which has passed a central position a rapidly increasing mechanical assistance from the other piston to eliminate all danger of the prime mover stopping when a piston reaches the central critical position referred to.

NOTE.—Copies of any of these patents will be furnished by Munn & Co. for ten cents each. Please state the name of the patentee, title of the invention, and date of this paper.

Business and Personal Wants.

READ THIS COLUMN CAREFULLY. You will find inquiries for certain classes of articles numbered in consecutive order. If you manufacture these goods write us at once and we will send you the name and address of the party desiring the information. In every case it is necessary to give the number of the inquiry. MUNN & CO.

Marine Iron Works, Chicago. Catalogue free. Inquiry No. 6404.—For manufacturers of the electric candy machine known as "Fairy Floss" or "Cotton Candy."

For logging engines. J. S. Mundy, Newark, N. J. Inquiry No. 6405.—For makers of decorative glass spangles or ornamental cut glass. "C. S." Metal Polish. Indianapolis. Samples free.

Inquiry No. 6406.—For manufacturers of copper plated sheet iron and steel. Perforated Metals, Harrington & King Perforating Co., Chicago.

Inquiry No. 6407.—For paper decorative panels for tapestry work, also for theatrical scenery from which to paint. Handle & Spoke Mch. Ober Mfg. Co., 10 Bell St., Chagrin Falls, O.

Inquiry No. 6408.—For makers of a pneumatic drag saw. Adding, multiplying and dividing machine, all in one. Felt & Tarrant Mfg. Co., Chicago.

Inquiry No. 6409.—For information concerning "Patrick Metal." Sawmill machinery and outfits manufactured by the Lane Mfg. Co., Box 13, Montpelier, Vt.

Inquiry No. 6410.—For disks of prepared paper for igniting wicks of pocket cigar lighters; the disks are about 1 inch in diameter, having on the face small patches of chemical substance. Special Machinery to order, manufacturing, metal stampings, etc., Brickner Machine Co., Tiffin, Ohio.

Inquiry No. 6411.—For makers of fancy paper shades for electric light globes. Robert W. Hunt & Co. bureau of consultation, chemical and physical tests and inspection. The Rookery, Chicago.

Inquiry No. 6412.—For makers of wooden blocks containing spirit plumb. Patent for sale or on royalty.—Combination watch, fob chain, key and chatelein bag protector. D. Summa, 129 Thompson Street, New York City.

Inquiry No. 6413.—For makers of wooden thumb screws. The celebrated "Hornsby-Akroyd" Patent Safety Oil Engine is built by the De La Vergne Machine Company, Foot of East 138th Street, New York.

Inquiry No. 6414.—For dealers in patented novelties. I have every facility for manufacturing and marketing hardware and housefurnishing specialties. Wm. McDonald, 190 Main St., East Rochester, N. Y.

Inquiry No. 6415.—For makers of steam engines from 1/2 to 1 h. p. THE SCIENTIFIC AMERICAN SUPPLEMENT is publishing a practical series of illustrated articles on experimental electro-chemistry by N. Monroe Hopkins.

Inquiry No. 6416.—For machines for making briquettes from marsh mud, or who control the process. WANTED.—Revolutionary Documents. Autograph Letters, Journals, Prints, Washington Portraits, Early American Illustrated Magazines, Early Patents signed by Presidents of the United States. Valentine's Manuals of the early 40's. Correspondence solicited. Address C. A. M., Box 773, New York.

Inquiry No. 6417.—For machinery for cleaning clothing. Any metal, sheet, band, rod, bar, wire; cut, bent, crimped, punched, stamped, shaped, embossed, lettered. Dies made. Metal Stamping Co., Niagara Falls, N. Y.

Inquiry No. 6418.—For makers of ice machinery and outfit; also for makers of corrugated iron arches for building. We manufacture gasoline motor and high-grade machinery, castings best quality gray iron. Select patterns, and let us quote prices. Frontier Iron Works, Buffalo, N. Y.

Inquiry No. 6419.—For large quantities of draw knife with 6-inch blade. Manufacturers of patent articles, dies, metal stamping, screw machine work, hardware specialties, machinery and tools. Quadriga Manufacturing Company, 10 South Canal Street, Chicago.

Inquiry No. 6420.—For makers of bottles for soda water with Codd's ball stoppers. WANTED.—Having a thoroughly organized agency force, we are desirous of securing Exclusive Pacific Coast Agency of Articles of Merit, where personal solicitation is required. Address Suite No. 2, 47 Geary Street, San Francisco, Cal.

Inquiry No. 6421.—For makers of earthen baking utensils containing asbestos. CALCULATING MACHINES.—Wanted, first-class firm willing to take up the agency and sale in the United States and Canada of a well-known calculating machine. Terms very favorable. Apply Grimme, Natalis & Co., Braunschweig, Germany.

Inquiry No. 6422.—For makers of fiberloid. Rowe's Automatic Carpenter's Hammer Device.—United States, Canada and Great Britain patents granted. Will sell same outright, consider royalty or correspond with some one with capital. Send for descriptive circular. Geo. H. Rowe, Patentee, Box 442, Ennis, Texas.

Inquiry No. 6423.—For machinery for the desiccation of coconuts. Inquiry No. 6424.—For makers of call boxes similar to those employed by the Western Union Co.

Inquiry No. 6425.—For makers of woven wire bed springs, also spiral springs. Inquiry No. 6426.—For machinery for evaporating sweet corn for table use.

Inquiry No. 6427.—For makers of art metal furniture. Inquiry No. 6428.—For makers of electric storage batteries, such as are used for propelling automobiles and recharged by electricity.

Inquiry No. 6429.—For parties to build 1,000 or more autos per year, complete, on contract, drawings and samples furnished. Inquiry No. 6430.—For an estimate of cost of small plant of machinery for making tin boxes of all sizes.

Inquiry No. 6431.—For makers of hollow wire, small pressure tank and gasoline lamps. Inquiry No. 6432.—For machinery and appliances for oil refining.

Inquiry No. 6433.—For makers of door openers and closers. Inquiry No. 6434.—For machinery for crushing and grinding green foodstuffs, to prepare same for drying, also for machinery for such drying.



HINTS TO CORRESPONDENTS.

Names and Address must accompany all letters or no attention will be paid thereto. This is for our information and not for publication. References to former articles or answers should give date of paper and page or number of question. Inquiries not answered in reasonable time should be repeated; correspondents will bear in mind that some answers require not a little research, and though we endeavor to reply to all either by letter or in this department, each must take his turn. Buyers wishing to purchase any article not advertised in our columns will be furnished with addresses of houses manufacturing or carrying the same. Special Written Information on matters of personal rather than general interest cannot be expected without remuneration. Scientific American Supplements referred to may be had at the office. Price 10 cents each. Books referred to promptly supplied on receipt of price. Minerals sent for examination should be distinctly marked or labeled.

(9520) W. A. T. asks: Would you kindly give me directions for a spark coil for 3-horse-power gasoline engine? Size of core, feet and number of wire for primary; also feet and number of wire for secondary. I have 550 feet of No. 18 cotton-covered wire that I would like to work into the coil. Want coil to give about 1/2-inch spark. A SUPPLEMENT No. 1281, which we have sent you upon your order, gives full information concerning a coil for gas engine ignition, if one has general knowledge of the work of construction. Lacking this, it would be best to get Norrie's "Induction Coils," price \$1, which gives detailed instruction in this work, together with tables of data for all the parts of coils of all sizes up to a 12-inch spark. Do not use so coarse a wire as No. 18 in a secondary coil, and use a coarser wire in the primary. Two layers of No. 14 will be right for primary, layer 6 inches long. Three-fourths pound of No. 36 silk-covered will be right for secondary to give a half-inch spark. Core should be 1/2 to 1 inch in diameter and 7 inches long. 2. If a person sparked his engine with a magneto, would he need a coil also? A magneto can be made which will render a coil unnecessary, but a battery and coil are necessary till the machine has speed enough to enable the magneto to generate.

(9521) C. S. J. asks: I wish to learn the cause of trichina in pork. A. The trichina spiralis is a worm, a parasite of the hog. It is often found in great numbers in the flesh of these animals, in the encysted condition but still alive. If such meat is eaten without cooking thoroughly, the parasite is taken into the body and is rapidly propagated. The worm came originally from the rat. As hogs eat rats, they pass into the hog and thence into man. The only preventive is thorough cooking. This kills the trichina. No rare or underdone pork should ever be eaten. The risk is too great. The cost of immunity is so little, that anyone may be safe. Cook all pork thoroughly. 2. The cause of ptomaine poisoning by eating pork. What causes the presence of the poison, how the poison can be prevented, and whether or not there is any way of detecting the presence of poison before using the meat? A. Ptomaines are formed by decomposition. If only fresh food is used, one will be safe from these poisons.

(9522) H. S. N. asks: I have been a reader of your paper for several years, and always enjoy reading it. I should like to submit a problem for solution. The problem is this: Several years ago I took a picture of a fast train while running, a Michigan Central flier, at a point about two miles east of Decatur. On development the plate showed a blur of 1-32 inch, i. e., the pilot did. I used a Vibe extra rapid plate; the focus of the lens was 6 inches; the distance of the engine, the pilot, from the camera, 50 feet; the length of exposure, 1-100 of one second; camera was placed at an angle of 15 deg. with the track. What was the speed of the train? The camera was a Vibe, 4 1/4 x 4 1/4, meniscus lens. A. The solution of your problem of the speed of the train is not difficult, at least so far as a sufficiently close approximation is concerned. Start with the fact that the image of the pilot moved 1-32 inch during exposure. Since the lens is 6-inch focus and the pilot is 50 feet away, the pilot moved across the line drawn through the center of the lens, 100 times 1-32 inch, or 3.125 inches, since 50 feet is 100 times 6 inches. And since the camera made an angle of 15 deg. with the track, we must divide the 3.125 inches by the sine of 15 deg. to find the distance the pilot moved during the exposure. This gives 12.07 inches as the distance the train moved in the time of exposure, or 1-100 second. In one second it moved 1,207 inches, or 100 feet 7 inches. This is a speed of somewhat over 71 miles per hour. As we said above, this is an approximate solution, but still not far from the result which an exact solution would give.

(9523) J. S. M. asks: Will you kindly answer in your column of Notes and Queries the inclosed questions relative to Roman computation? I suppose the matter is simple enough, but I have never come across any work explaining it, nor any person whom I have asked who could throw any light on the

subject. A. Very little is known concerning the method by which the Romans used their very inconvenient notation for performing the ordinary calculations. They are supposed to have used the abacus for all except the most simple problems. This instrument is in common use now by all Chinamen, and it is not difficult for any one to see it used wherever these men may be found. A description of the abacus may be had from any encyclopedia. There was a rod for each denomination of numbers to millions, seven rods each carrying five balls. Another set of short rods corresponded to these, and had one ball sliding on each. They could thus count by fives and carry by tens. Other rods supplied their need for calculating ounces. Further than this their business did not require them to go; they never needed to divide the distance of the sun by the velocity of light. They died in total darkness in regard to both of these data of the universe. As we said at the outset, we do not know the detail of the method by which the Romans made their calculations. Their mode of writing numbers was not like ours by placing like denominations in the same column, but each letter had its significance, and each number could be added by itself on the abacus, since each rod meant a denomination.

INDEX OF INVENTIONS

For which Letters Patent of the United States were Issued for the Week Ending

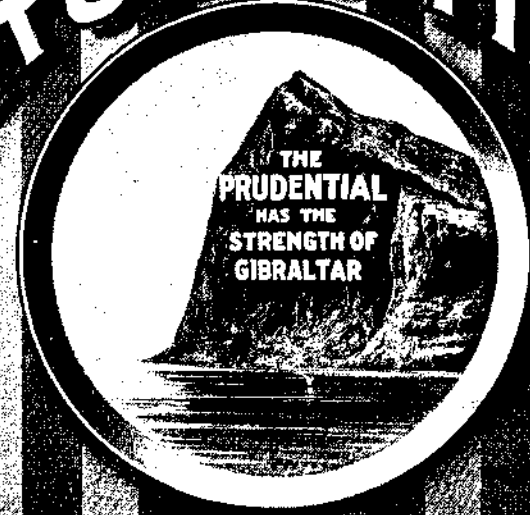
January 10, 1905

AND EACH BEARING THAT DATE

[See note at end of list about copies of these patents.]

Table listing various inventions and their patent numbers, including items like Abrading machine, Acid, Acous, Adhesives, Agricultural implement, Air cooling apparatus, Alkaline solution, Amalgamating apparatus, Amusement, whirpool for public, Animal dipping machine, Animals, freese, the soil, trees, or plants from harmful, S. Lukuciejewsky, Anvil, vise, and drill, combination, J. Weather's, Auger, earth, W. E. Robertson, Automobile, E. R. Hewitt, Bag, bale, etc., tie, G. J. Schuhmacher, Barrel, Melson & Marvel, Barrel, hat, E. Fucigna, Basket, C. Seitz, Battery, See Electric battery, Battery plates, protective covering for storage, A. Meygert, Battery zinc, F. J. Delavie, Bearing, center, J. C. Barber, Bed, divan folding, W. Thompson, Bedstead and bed bottom, extensible, L. Pieper, Belt conveyer apparatus, T. Robins, Jr., Belt fastener, J. C. Conn, Belt guide, W. C. H. & R. A. Caswell, Belt block, J. H. Hickler, Bin gate, R. C. Dugan, Binder, loose leaf, Sheridan & Wheeler, Binder reel, R. R. Seberg, Binder, temporary, W. C. Abbott, Blank feeding apparatus, C. B. & C. D. McDonald, Blank holder, G. W. Campbell, Blinds rising by the wind, device for preventing shop window, S. S. Willmott, Blotter, revolving, E. M. Wilson, Boat, sail, J. P. Pool, Bobbin, J. F. Williams, Boiler furnace, steam, T. Lennon, Book, bill, M. L. Schulze, Book, blank, J. B. Alchholz, Book, credit coupon, L. P. Rountt, Book stack, H. P. Macdonald, Jr., Books, etc., expandible locking clasp for, J. G. Gifford, Boring device, square hole, K. Auerbach, Boring machine, Harker & Alcock, Bottle, antirefilling, L. Kuntz, Bottle, antiseptic feeding, C. W. Tinning, Bottle closures, machine for applying, Cole & Greensfelder, Bottle nipple holder, nursing, F. C. Brooke, Bottle, non-refillable, O. J. Schneck, Bottle, non-refillable, E. H. Berner, Bottle, non-refillable, H. P. Hall, Bottles, apparatus for simultaneously corking a number of, Hyden & Simonsson, Bowling alley, P. A. Haberl, Bowling alley, automatic, T. & F. R. McNamara, Box or receptacle, W. R. Comings, Brake hanger, non-chattering, E. H. Scofield, Brake operating mechanism, C. Mawer, Branding apparatus, electric, D. C. Sprecher, Brush holder, C. L. Stayer, Bucket, clamp shell, G. H. Williams, Buggy foot attachment, C. D. Smith, Buggy top support, E. H. Mason, Bundle carrier, E. M. Comstock, Burglar alarm, O. B. Hanson, Button attachment, A. H. Hope, Button fastener, J. C. Morrison, Cable reel, C. W. Larson, Cake icing machine, W. S. Ivins, Calculating machine driving mechanism, F. C. Rinche, Camera drop-front, J. S. Wright, Camera, panoramic, C. Mills, Can-testing machine, P. Kruse, Canning machine or apparatus, S. J. Dunkley, Candlestick, W. Ferrier, Cane, A. Wagner, Car, P. P. Sturdevant, Car brake mechanism, railway, W. W. Annable, Car coupling, J. A. Hinson, Car coupling, railway, A. Fodor, Car door fastener, Saling & McKiel, Car draft gear, railway, H. M. Pfleger, Car life preserver, railway, W. W. Annable, Car roof, P. H. Murphy, Car spring, railway, S. M. Lillie, Car ventilator, J. E. Armstrong, Cars, etc., bracket stop for street, E. Dunning, Cars or other road vehicles, life guard for electric tram, W. A. & G. A. W. Turner, Carbureter, H. A. Burch, Carpet sweeper, W. D. Hodson, Carriage top box loop, F. A. Neider, Carrier. See Bundle carrier.

THE PRUDENTIAL




What is Your Wish?

To Leave Your Family Well Off?
To Secure an Income in Old Age?
To Increase Your Business Credit?
To Invest Your Savings Profitably?

Life Insurance in The Prudential may be made to Provide all These and More.
Write for Book Showing Rates.

THE PRUDENTIAL INSURANCE CO. OF AMERICA
JOHN F. DRYDEN, Pres't. Dept. 121 Home Office: NEWARK, N. J.



A Sign of Money

"Rub it on wood and make it come good."

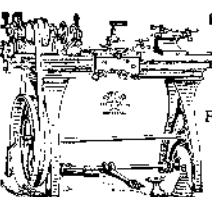
In by-gone times an itching palm was said to betoken the receipt of money. To-day, the sure sign of money is an advertisement in *Leslie's Weekly* and *Judge*. Large and certain returns result from the use of these money-making mediums.

Leslie's Weekly —the pioneer illustrated news weekly of America. Enters over 100,000 homes every week and is read by all the family. Its columns are clean, instructive and entertaining. A very profitable advertising medium.

Judge —the weekly that makes people laugh. Full of fun, good nature and optimism. Seen everywhere. A great favorite with the general public. Makes mirth for the reader and money for the advertiser.

LESLIE'S WEEKLY, Fourth Ave. and 19th St., New York City. W. L. MILLER, Advertising Mgr.
JUDGE, Fourth Ave. and 19th St., New York City. WILLET F. COOK, Advertising Mgr.
CHAS. B. NICHOLS, Western Representative, 1313 Hartford Bldg., Chicago.
J. F. STONE, Eastern Representative, 59 Journal Building, Boston.

| | |
|--|---------|
| Cart, hand, M. H. Daley..... | 779,913 |
| Cartridge, T. S. King..... | 780,003 |
| Cattle guard, O. B. Dillingham..... | 779,642 |
| Cattle guard, G. S. Cooper..... | 779,909 |
| Cheese cutter centering device, M. B. Irvine..... | 779,783 |
| Chuck for holding abrading wheels, H. K. Bacon..... | 779,684 |
| Churn, centrifugal, P. A. M. Arnberg..... | 779,986 |
| Chute, coal, F. S. Converse..... | 779,529 |
| Cigar boxes, combined flap and extension back for, I. Steiner..... | 779,676 |
| Cigarette machine, D. J. Campbell..... | 779,411 |
| Cigarette machine, P. A. Lawless..... | 779,430 |
| Cigarette or cigar mouthpiece, G. P. Butler..... | 779,687 |
| Cigarette tip, Strause & Keilmann..... | 779,817 |
| Cigarettes or cigars, machine for making and applying mouthpieces to, G. P. Butler..... | 779,688 |
| Clutch and brake, friction, F. Kirk..... | 779,656 |
| Clutch operating device, pneumatically actuated, A. P. Schmucker..... | 779,806 |
| Coal scuttle and sieve, combined, E. J. Turlington..... | 779,820 |
| Cock, rotary funnel, O. Link..... | 779,946 |
| Coffee urn, F. G. Schenck..... | 779,740 |
| Coke oven charging machine, J. Haug..... | 779,780 |
| Concentrating table shaker, J. Klein..... | 779,857 |
| Concrete piles and preparatory piles therefor, forming, C. Shuman..... | 779,880 |
| Condenser reversible current apparatus, J. Tala..... | 779,889 |
| Conveyor, W. Carr..... | 779,465 |
| Conveyor, A. Becchi..... | 779,758 |
| Conveyor or carrier, H. D. Conway..... | 779,530 |
| Corn chopping machine, C. Scheetz..... | 779,625 |
| Corset, E. Calkins..... | 779,765 |
| Cotton condenser attachment, Brown & St. Onge..... | 779,635 |
| Cotton picker, M. E. Lehmann..... | 779,945 |
| Coupling, E. Vogel..... | 779,750 |
| Crate, packing, E. G. Quackenbush..... | 779,734 |
| Crushing mill, roll, T. L. & T. J. Sturtevant..... | 779,566 |
| Cultivator attachment, B. P. Collier..... | 779,528 |
| Cultivator for trees, D. Robertson..... | 779,870 |
| Current meter, W. S. Blauvelt..... | 779,685 |
| Curtain pole, J. Kresder..... | 779,788 |
| Cuspidor, M. S. Hart..... | 779,932 |
| Cutter head, dust collector, reciprocating, F. A. Noble..... | 779,796 |
| Dauber, fountain, F. D. E. Robbins..... | 779,563 |
| Developer and portable dark room, mechanical, Stevenson & Brunner..... | 779,748 |
| Dish washing machine, E. Crosby..... | 779,641 |
| Dispensing can, T. W. Alexander..... | 779,983 |
| Door, air, J. T. Devise..... | 779,534 |
| Door check, C. Ellingen..... | 779,917 |
| Draper, J. C. White..... | 779,981 |
| Drawing frame, L. W. Penney..... | 779,790 |
| Dredge, Henderson & Peake..... | 779,782 |
| Drill, See Seed drill. | |
| Drill core lifter, diamond, D. Dupuis..... | 779,995 |
| Drill machine rake device, J. von Dzembovski..... | 779,416 |
| Dust in dust carts, device for distributing, H. Freise..... | 779,540 |
| Duster, face and neck, W. T. Hodgen..... | 779,936 |
| Dye and making same, anthraquinone, H. Weltz..... | 779,825 |
| Dye and making same, violet sulfur, A. Lutringhaus..... | 779,869 |
| Electric battery, F. P. Dewey..... | 779,589 |
| Electric cable coupling, J. J. Dessert..... | 779,469 |
| Electric controller, A. Sundh..... | 779,447 |
| Electric furnace, D. R. S. Galbraith..... | 779,844 |
| Electric machine connection board, dynamo, J. G. Crawford..... | 779,532 |
| Electric motor bearing, F. M. Vogel..... | 779,822 |
| Electrical wave transmission, D. M. Thorell..... | 779,508 |
| Electrode, E. P. Price..... | 779,733 |
| Electrolysis, G. Rambaldini..... | 779,735 |
| Elevator signal system, B. J. Foley..... | 779,592 |
| Embossing machine, hydraulic, J. W. Nelson..... | 779,664 |
| Embossing press, S. Curtis..... | 779,912 |
| Enamelware, manufacture of, J. F. Kenkel..... | 779,655 |
| Engine counterweight attachment, gas, F. J. Miller..... | 779,727 |
| Engines, mixing apparatus for explosion or gasoline, E. T. McKaig..... | 779,490 |
| Eraser and pencil sharpener, combined, C. Wetzel..... | 779,894 |
| Excavating apparatus, Richmond & Beebe..... | 779,442 |
| Exhibitor, lace curtain, Swan & Snyder..... | 779,507 |
| Explosive, C. E. Bichel..... | 779,769 |
| Explosive engine, F. W. Hagar..... | 779,778 |
| Eye shield, A. A. Fairbanks..... | 779,591 |
| Fabric feeding mechanism, boarded, C. Jackson..... | 779,712 |
| Feed water heater, H. J. Scheubner..... | 779,741 |
| Feeder, automatic stock or poultry, H. N. Lyon..... | 779,434 |
| Fence, barb wire, F. C. Mesier..... | 779,616 |
| File case, P. J. A. Van Deuse..... | 780,015 |
| File, paper, J. MacLachlan..... | 779,950 |
| Filtering machine, T. J. Brough..... | 779,836 |
| Filter dam, E. V. R. Gardner..... | 779,703 |
| Filter pulp packing machine, K. Kiefer..... | 779,548 |
| Filtering apparatus, M. B. Lukens..... | 779,859 |
| Filtering apparatus for separating solids from liquids, K. Kiefer..... | 779,607 |
| Fire escape, E. M. Bras..... | 779,463 |
| Fire escape, J. Meltz..... | 779,488 |
| Fire escape, J. H. Leffelman..... | 779,550 |
| Fire extinguisher, Murray & Nuhring..... | 779,435 |
| Fire extinguisher, H. M. Gillett..... | 779,923 |
| Fire lighter, time, J. D. Fulton..... | 779,921 |
| Fire shield, P. Wendling..... | 779,452 |
| Firearm shoulder protector, C. B. T. Benton..... | 779,461 |
| Fireproofing wood, G. Blonie..... | 779,761 |
| Fish bait or lure, W. Shakespeare, Jr..... | 779,744 |
| Fish hook, C. Fredricks..... | 779,843 |
| Fish line bob, L. J. Holt..... | 779,937 |
| Flanged pipe, J. Wood, Jr..... | 779,896 |
| Flower holder, P. Gommel..... | 779,924 |
| Flue rattler, R. M. Crosby..... | 779,468 |
| Fluid compressors, differential governor for, G. Macloskie..... | 779,952 |
| Folding chair, C. Mettler..... | 780,006 |
| Friction brake, automatic, Sedgwick & Sullivan..... | 780,010 |
| Pulling machine step motion, W. H. Leavitt..... | 779,564 |
| Furnace, E. H. Carroll..... | 779,657 |
| Furnace, J. R. Grayth..... | 779,412 |
| Furniture base, glass, M. I. Abrams..... | 779,467 |
| Garbage burner, F. E. McGurran..... | 779,462 |
| Garment, infant's, L. C. Sherick..... | 779,960 |
| Gas burner, incandescent, L. R. Hopten..... | 779,809 |
| Gas engine, N. W. Traviss..... | 779,543 |
| Gas generating apparatus, acetylene, E. R. Cook..... | 779,509 |
| Gas generating apparatus, illuminating, F. J. Foveaux..... | 779,531 |
| Gas generator, acetylene, E. E. Miller..... | 779,842 |
| Gas line safety cut-off, J. G. Armstrong..... | 779,726 |
| Gas manufacturing apparatus, P. Eyerann..... | 779,469 |
| Gas producer, J. A. Herrick..... | 779,776 |
| Gases, means for utilizing waste furnace, C. L. Cole..... | 779,935 |
| Gear, O. L. Haney..... | 779,769 |
| Glass plates in store fronts and show cases, fastener for, J. H. Curry..... | 779,846 |
| Glassware making apparatus, hollow, E. E. Hoffman..... | 779,770 |
| Governor, pumping engine, C. P. McMullen..... | 779,602 |
| Grain drier, Morrison & McGrath..... | 12,302 |
| Grader, road, W. N. Williams..... | 779,513 |
| Grain drier, Morrison & McGrath..... | 779,729 |
| Grinding machine, G. Gorton..... | 779,646 |
| Grinding wheel, R. Gardner..... | 779,419 |
| Grinding wheel, G. Hart..... | 779,848 |
| Grindstone sickle support, C. H. Ferguson..... | 779,698 |
| Grindstone, convertible tool support for, C. H. Ferguson..... | 779,697 |
| Hammer, reciprocating, A. E. Leech..... | 779,721 |
| Hanger, See Picture frame hanger. | |
| Harness hook, I. E. Johnson..... | 779,545 |
| Harrow, N. H. Bloom..... | 779,520 |
| Harrow teeth fastener, G. F. Blaine..... | 779,834 |
| Harrow, wheeled disk, J. H. Price..... | 779,560 |
| Harvester, cotton, R. H. Purnell..... | 779,965 |
| Hat frame machine, D. D. Beatty..... | 779,831 |
| Hay elevator connecting head, Rowland & Bacher..... | 779,972 |
| Hay knife, C. E. Lombard..... | 779,947 |
| Hay loader, C. F. Mitchell..... | 779,487 |
| Hay press feeder, automatic, E. J. Richmond..... | 779,736 |
| Heat derived from fuels into energy for utilization, apparatus for converting, B. M. Aslakson..... | 779,406 |
| Heel, cushion, F. W. Sharpe..... | 779,974 |



"Star" Lathes

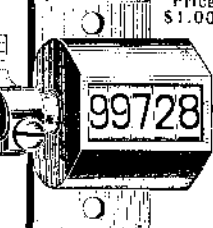
FOR FINE, ACCURATE WORK
SENeca Falls MFG. CO.
695 Water Street,
Seneca Falls, N. Y., U. S. A.

ENGINE & FOOT LATHES

MACHINE SHOP OUTFITS
TOOL SUPPLIES
SEBASTIAN LATHE CO. CINCINNATI, O.

Veeder Counters

to register reciprocating movements or revolutions. Cut full size.
Booklet Free
VEEDER MFG. CO.
Hartford, Conn.
Cyclometers, Odometers, Tachometers, Counters and Fine Castings.



A GOOD INVESTMENT

For \$1.75 we will send by express (not prepaid), complete N. D. outfit with full instructions for learning TELEGRAPH OPERATING. A fascinating study that will enable you to earn good wages. Send for our catalog. Established 1879.
J. H. BUNNELL & CO., Inc. 20 Park Place New York




The Right Kind of a Motor

on land or water. Salisbury Double Cylinder Motor 4 1/2 x 5. Water Jacket Cylinders and Head. Aluminum Crank Case. Self-Oiling. Nickel Steel Valves. Forged Steel Shaft. Salisbury Motors are reliable. Prices moderate. Send for Catalogue.
BUFFALO ENGINE CO., Mfrs.
272-274 Michigan St., Buffalo, N. Y.



THIS GRINDER

Has no pump, no valves. No piping required to supply it with water. Always ready for use. Simplest in construction, most efficient in operation. Price will interest you.
W. F. & JNO. BARNES CO.,
Established 1879.
1999 Ruby St., Rockford, Ill.




STEEL ROLLS

for flattening wire for all purposes
Send for Catalogue.
BLAKE & JOHNSON,
P. O. Box 7, WATERBURY, CONN.




You BUILD IT YOURSELF

Can We tell you how to do it, show views of machines built at home and many letters from satisfied customers in our new book "How to Make and Save Money with Incubators and Brooders." Full of good things. Invaluable to the beginner. You save half the cost of your incubator. None hatch better. Get the Book and know for yourself.
Channon, Snow & Co., Dept. 196, Quincy, Ill.



"You Cannot Stumble at Any Step of the Temple"

in measuring with this combination Triple-Beam Roller Gauge. A great convenience and a labor saver for single, double or triple measurements. \$1.25 each, postpaid
GOODELL-PRATT COMPANY
Greenfield, Mass.



Send For It To-Day

You'll find it always convenient to have as a useful and instructive book Montgomery & Co.'s Tool Catalogue. The new edition has 704 pages and is copiously illustrated. Pocket size 6 1/2 x 4 1/2 ins. Sent by mail for 25c.
MONTGOMERY & CO.,
105 Fulton St., New York City.



WOLVERINE

SELF STARTING AND REVERSING
Gasoline Marine Engines
3 to 18 horse power. Launches 18 to 75 ft. Write for catalogue.
WOLVERINE MOTOR WORKS
Grand Rapids, Mich., U. S. A.
Brooklyn office, 97 2nd St.



THE B. F. BARNES 14-INCH DRILL

is adapted for work from 1-16 inch to 3/4 inch. A strong, substantial, well built drill. Plain lever or power feed as desired. We build a full line of Drills. All sizes furnished in Gangs. Also have 5-inch, and 11-inch Screw Cutting Lathes, and a 2 1/2-inch Wet Tool Grinder. Catalog 8 on request.
B. F. BARNES COMPANY, Rockford, Ill.
European Branch, 149 Queen Victoria St., London, E. C.



THE HARRINGTON & KING PERFORATING CO.

PERFORATED METALS OF EVERY DESCRIPTION FOR ALL USES.
SCREENS OF ALL KINDS.
225 NORTH UNION ST. CHICAGO, ILL.



WILLIAMS' SHAVING STICK

The acme of luxury, convenience and economy.



Williams' Shaving Sticks, Shaving Tablets, Toilet Waters, Talcum Powder, Jersey Cream Toilet Soap.

Write for booklet "How to Shave"

The J. B. Williams Co., Glastonbury, Conn.

AGENTS

wanted in every locality to represent the Keystone Fire Extinguisher. We offer attractive inducements for permanent, profitable occupation. Previous experience not required. The

KEYSTONE

Fire Extinguisher



has been examined and approved under the standard of the National Board of Fire Underwriters. It sells for \$12.00 (freight allowed east of the Rocky Mountains)—the cheapest and best approved extinguisher on the market. This agency can be carried in addition to other business interests.

Write to-day for full particulars.

JAMES BOYD & BROTHER
18 N. 4th St., Philadelphia

Manufacturers of
FIRE PROTECTION EQUIPMENT
Fire Hose, Hose Couplings, Hose Pipes, etc.

SAVE FIRE LOSS

Seconds count. Be ready at the start with **Badger's Fire Extinguisher** and you can put out any kind of a fire. A request will bring you the information you wish, FREE.

BADGER FIRE EXTINGUISHER CO.
50 Portland St., Boston, Mass.



THOUSANDS are successful and gaining better positions and salaries studying

Electrical Engineering, Steam Engineering, Mechanical Engineering, Mechanical Drawing, Electric Motorman's Course, Dynamo Tender's Course, Telegraphy, Short Electrical Course, Arithmetic, Algebra, by mail. Thomas A. Edison en dorsed Institute. Text books free. Students helped to positions. Write for free book, "Can I Become An Electrical Engineer?"

ELECTRICAL ENGINEER INSTITUTE
Dept. A, 240 West 23d St., New York


Strength, Safety, Speed, Simplicity



are combined in the highest perfection in the **Mesco Motorcycle Outfit**. It can be attached to any bicycle or tandem and includes 1/2 H. P. Motor, choice of any transmission and all accessories with which to make a complete motorcycle. Bicycle dealers attach this outfit and sell your left-over wheels. Price \$75. Write for catalogue and agents' discount.

Motor Bicycle Equipment and Supply Co., Buffalo, N. Y.

Slotted Armature DISCS



for dynamos and motors, 1 1/2 in. diameter, 12 slots, 25c. per inch. By mail, 35c. Send stamp for sample.

Waltham Model Supply Co.
WALTHAM, MASS.

A Dean Boiler Tube Cleaner



to prove that it is the only device that will absolutely remove all the scale from your boilers without inflicting any damage upon the tubes. Write to-day for "Economy in the Boiler Room."

WM. B. PIERCE CO.
319 Washington Street, Buffalo, N. Y.

How To Increase Your Business

READ carefully, every week, the **Business and Personal Wants** column in the **Scientific American**. This week it will be found on page 47. Some week you will be likely to find an inquiry for something that you manufacture or deal in. A prompt reply may bring an order. **Watch it Carefully**

Heels and foreparts, shave for boot or shoe, R. J. E. Metzenthin 778,486

Hinge, spring, E. Bommer 778,762

Hog catching and moving trap, G. E. Ringer 778,967

Hog ring, W. F. Richards 778,502

Horseshoe calk, G. F. Hallman 778,586, 778,597

Horseshoe calk, R. Whitaker 778,753

Horseshoe clip, M. Steed 778,815

Horseshoe, composition, H. Bartley 778,757

Horseshoe, soft tread, F. E. McEwen 778,794

Hub attaching means, J. W. Kovalek 778,492

Hydraulic press, O. Philipp 778,800

Inductance coil, W. C. Fish 788,898

Induction apparatus, high frequency, Spaulding & Austin 778,673

Insect trap, C. F. Smith 778,672

Insulator, F. M. Locke 778,658

Insulator pin, M. M. Wood 778,828

Intranching tool, C. M. Ransom 778,562

Irrigating head gate, C. W. Seitz 778,973

Jar closure, J. C. Wandell 778,678

Joining machine, overlap, H. Romunder 778,970

Journal box, antifriction, B. Allen 778,403

Knitting machine, circular, H. A. Houseman 778,423

Knob, carriage, J. Hafer, Jr. 778,647

Labeling machine, H. L. Duncan 778,818

Labeling machine, double, J. G. Hendrickson 778,933

Labeling machine, top, J. G. Hendrickson 778,934

Lace making machine, F. A. Schmidt 778,876

Lacing holding clasp, shoe, A. M. Henderson 778,710

Ladder, step, W. M. Anderson 778,829

Lamp, C. C. Malton 778,724

Lamp, H. F. Smith 778,745

Lamp, electric arc, W. C. Fish 778,538

Lamp, electric arc, H. Lux 778,948

Lamp fixture, electric, E. E. Hayward 778,778

Lamp, gas, A. W. Nicholls 778,618

Lampblack from acetylene, making, J. M. Merched 778,728

Lantern, tubular, F. C. Cannon 778,585

Lantern, tubular, W. T. & F. A. Iddings 778,854

Latch, gate, N. Peterson 778,963

Lifting jack, J. C. Blevney 778,577

Lifting jack, E. Wustner 778,633

Linotype machine, J. R. Rogers 778,968

Liquid elevating apparatus, S. Hughes 778,941

Liquid raising process, Young & Shaw 778,456

Liquid separator, centrifugal, A. T. Salenius 778,445

Liquid separator, centrifugal, A. L. Christenson 778,890

Loading device, W. H. Fern 778,688

Loading or unloading machine, J. McMyler 778,493

Lock, J. Greenberg 778,584

Lock, H. Barry 778,888

Loom, J. R. Pitton 778,887

Loom bobbin receptacle, automatic, M. L. Stone 778,628

Loom filling fork, R. Riley 778,966

Loom picker check, S. H. Beville 778,902

Loom shuttle motion, J. & A. Mann 778,484

Loom warp thread holder, H. Lee 778,944

Lubricating device, J. V. Clark 778,690

Lubricator, Knipper & Mackaye 778,688

Lubricator drop feed, E. D. Marvin 778,782

Magnet, polyphase, D. L. Lindquist 778,432

Mail bag fastening, C. B. Stevens 778,747

Mail catcher and receiver, Long & Gorton 778,722

Mail collecting and distributing pouch, E. M. Letts 778,551

Mailing card, coin, J. Ketteman 778,715

Manure spreader, J. S. Kemp 778,714

Match box, J. F. W. Kuehn 778,610

Match composition, H. Steier 778,674

Match holder and striker, E. A. Parker 778,495

Match safe, self-igniting, S. A. Tescher 778,628

Mattress, B. F. Berryman 778,576

Measure, test, B. Simpson 778,882

Measuring instrument shunt, electrical, L. T. Robinson 778,737

Mechanical movement, A. Wahle 778,451

Mechanical movement, F. C. Northrup 778,556

Medicated sweetmeat, Bjornstad & Stacey 778,833

Metal working machine, electromagnetic, F. W. Jessop 778,427

Meter, See Current meter

Milk cooler, J. W. & C. W. Walkup 778,823

Mine shaft safety device, N. W. Dickerson 778,535

Molding machine, W. J. Sterling 778,976, 778,977

Mortising machine, A. W. Miller 778,955

Motion transmitting mechanism, rotary, J. S. Kemp 778,713

Motor, C. Fere, Sr. 778,538

Mower, lawn, J. I. Kunkle 778,428

Mowers, reapers, etc., cutting apparatus for, J. Downing 778,894

Mowing machine attachment, A. K. Rarey 780,014

Muffler, G. S. Troest 778,510

Music rack, Buck & Ogden 778,805

Musical instruments, pneumatic action for, E. de Kleist 778,710

Musical instruments, tracker for mechanical, R. W. Pain 778,867

Nail puller, H. L. Fish 778,919

Neck stall, A. J. Griffith 778,927

Neckwear holder, J. Weil 778,631

Note sheet, F. Taft 778,677

Nozzle and spreader, combined flushing, J. H. Bormann 778,904

Nursery stock puller, M. P. Allen 778,984

Nut lock, W. B. Wolf 778,632

Nut lock, C. D. Campbell 778,766

Nut shells, machine for cutting, J. H. Gruner 778,474

Oil as fuel, means for the utilization of, crude, J. O. Alwood 778,885

Oil can, G. Palm 778,788

Oil cup, McGinty & Huber 778,858

Oil from water, apparatus for separating, W. J. McKnight 778,482

Oil wick burner, M. P. Allen 778,515

Ornaments, manufacturing cloth covered, A. M. Holstein 778,651

Oven, baker's, E. Kaiser 778,428

Packing, adjustable turbine, A. R. Dodge 778,771

Packing and shipping case, H. A. Penrose 778,621

Packing, elastic fluid turbine, O. Junggren 778,785

Packing, metallic, T. A. Johnston 778,480

Packing, piston rod, C. P. Pugh 778,700

Paint and producing same, R. Warnock 778,752

Paint and producing same, W. A. Hall 780,001

Paper clip, C. J. Brennan 778,622

Paper feeding machines, sheet calipering device for, Dexter & Hallstream 778,914

Paper feeding mechanism, C. A. Juengst 778,754

Pasting mechanism, P. A. Lawless 780,084

Pen, fountain, J. H. Crowell 778,682

Pen reservoir attachment, H. Tartsch 778,567

Pew, extensible, J. P. Kline 778,718

Photographic plates, prints, or films, apparatus for washing or otherwise treating, J. B. S. MacIlwaine 778,483

Photographic shutter, E. V. Pierce 778,665

Photographs or pictures for producing animated effects, apparatus for displaying series of, J. O. Mason 778,854

Pick, J. Chevallier 778,836

Picker check, C. H. Buckley 778,636

Picture frame hanger, J. A. Long 778,433

Pictures by means of catalysis, reproducing, Ostwald & Gros 778,787

Pipe coupling, W. P. Powell 778,478

Pipe or casing puller, S. W. Munn 778,660

Planter, corn, E. E. Levig 778,552

Planter, corn, W. S. Graham 778,925

Planter dropping mechanism, corn, R. S. Kirkpatrick 778,608

Plastic block machine, A. Evenstad 778,775

Plastic materials, manufacturing decorative articles from, J. Walter 778,978

Plow gate, E. W. Grice 778,826

Pneumatic despatch apparatus carrier, C. H. Burton 778,638

Pocket device for garments, detachable, R. D. Yates 778,888

Poison for rodents, S. W. Allen 778,634

Polyphase winding, B. A. Behrend 778,575

Pontoon for lifting loaded ships, A. C. A. Holzapfel 778,852

Powder can, S. Rohrer 778,667

Power transmitter, Ough & Waltenbaugh 778,620

Printing apparatus, L. M. Todd 778,570

Propeller, C. T. Freid 778,473

Puff comb, R. H. Damon 778,413

Puller, See Nail puller

Pump, B. W. Rice 778,488

Pump, D. L. Shaffer 778,743

Pump, electric, E. F. Porter 778,623

Pump measuring device, fluid, W. J. Businger 778,989

"Raffles" Gentleman Burglar



Raffles, the prince of professional cracksmen, finds no safer place for his enormous chest, laden with the heavy silver from many a plunder, than the vaults at the bank.

Bunny, his confederate, deposits the chest. In less than twenty-four hours the vaults are entered and robbed.

Bunny withdraws the chest only to find that the bank robber has used it as a hiding-place for his ill-gotten gains.

This tale of a daring robbery, "The Chest of Silver," will be found in the January 21st issue of

At all News Stands **Collier's** ten cents the copy

THE EQUITABLE

HENRY B. HYDE FOUNDER

JANUARY 1905



STRONGEST IN THE WORLD

J. W. ALEXANDER PRESIDENT J. H. HYDE VICE PRESIDENT

DON'T let another year pass away without giving to your family the protection that life assurance alone can give.

By means of an Endowment Policy in the Equitable you can not only give them this protection but at the same time provide for your own maturer years.

Send coupon below, for particulars.

Splendid opportunities for men of character to act as representatives Write to GAGE E. TARBELL 2nd Vice President

The Equitable Life Assurance Society of the United States, 120 Broadway, New York, Dept. 29

Please send me information regarding an Endowment policy for \$..... if issued at..... Years of age.

Name.....

Address.....

Hydrozone

Cures Sore Throat

A Harmless Antiseptic.

Endorsed by the medical profession. Send ten cents to pay postage on free trial bottle. Sold by Leading Druggists. Not genuine unless label bears my signature:

Prof. Charles Marchand

Dept. U, 63 Prince St., N. Y.

Write for free booklet on Rational Treatment of Disease.



PAGE'S GLUE STRONGEST IN THE WORLD. Does not set quickly like the old style glue, and has four times the strength (Official test, 1 in. sq. hard pine butted, registered 1620 lbs. before parting). Used by the best mechanics and mfrs. the world over. Invaluable in household use, for Furniture, China, Ivory, Books, Leather, and wherever a strong adhesive is desired. 1 oz. bottle or collapsible self-sealing tube (retails 10c.) mailed for 12c. If your dealer hasn't our line, write for 12c. If **PAGE'S PHOTO PASTE**, 2 oz. size retails 5c.; by mail, 10c. **PAGE'S MUCILAGE**, 2 oz. size retails 5c.; by mail, 10c. RUSSIA CEMENT CO., 139 Essex Ave., Gloucester, Mass.

SHOEMAKER'S BOOK on POULTRY



and almanac for 1905, contains 224 pages, with many fine colored plates of fowls true to life. Tells all about chickens, their care, diseases and remedies. All about INCUBATORS and how to operate them. All about poultry houses and how to build them. It's really an encyclopedia of chicken-dom. You need it. Price only 15c.

C. C. SHOEMAKER, Box 900, FREEPORT, ILL.



BIG PROFITS IN POULTRY.

A city lot is large enough, and the

CYPHERS INCUBATOR

makes hatching certain. Used on and endorsed by 42 Government Experiment Stations. Complete catalog and poultry guide, 212 pages (8 1/2 inches), free if you mention this paper. Address nearest office.

Cyphers Incubator Co., Buffalo, N. Y. Boston, Chicago, New York, Kansas City, San Francisco

"The Kohinor in California's crown."

MOUNT SHASTA

There is no more beautiful sight of its kind than Mount Shasta, covered with snow and glistening in the sun. Thousands have traveled across the continent to see it, and felt well repaid for their time. The way to reach it is by the

NEW YORK CENTRAL LINES

and their connections. Mount Shasta is only about four and a half days from New York or Boston, and every lover of this country should see it.

For details of rates and trains, see a ticket agent of the New York Central.

A copy of "America's Winter Resorts" will be sent free on receipt of a postage stamp by George H. Daniels, General Passenger Agent, New York Central & Hudson River Railroad, Grand Central Station, New York.

Instructive Scientific Papers ON TIMELY TOPICS

Price 10 Cents each by mail

- ARTIFICIAL STONE.** By L. P. Ford. A paper of immense practical value to the architect and builder. SCIENTIFIC AMERICAN SUPPLEMENT 1500.
- THE SHRINKAGE AND WARPING OF TIMBER.** By Harold Busbridge. An excellent presentation of modern views; fully illustrated. SCIENTIFIC AMERICAN SUPPLEMENT 1500.
- CONSTRUCTION OF AN INDICATING OR RECORDING TIN PLATE ANEROID BAROMETER.** By N. Monroe Hopkins. Fully illustrated. SCIENTIFIC AMERICAN SUPPLEMENT 1500.
- DIRECT-VISION SPECTROSCOPES.** By T. H. Blakesley, M.A. An admirably written, instructive and copiously illustrated article. SCIENTIFIC AMERICAN SUPPLEMENT No. 1493.
- HOME MADE DYNAMOS.** SCIENTIFIC AMERICAN SUPPLEMENTS 161 and 600 contain excellent articles with full drawings.
- PLATING DYNAMOS.** SCIENTIFIC AMERICAN SUPPLEMENTS 720 and 793 describe their construction so clearly that any amateur can make them.
- DYNAMO AND MOTOR COMBINED.** Fully described and illustrated in SCIENTIFIC AMERICAN SUPPLEMENTS 844 and 865. The machines can be run either as dynamos or motors.
- ELECTRICAL MOTORS.** Their Construction at Home. SCIENTIFIC AMERICAN SUPPLEMENTS 759, 761, 767, 641.

Price 10 Cents each, by mail

Order through your newsdealer or from
MUNN & COMPANY
361 Broadway New York

| | |
|---|---------|
| Pump, motor air, E. Cheshire | 779,907 |
| Pump, oil, Clark & Blynt | 779,989 |
| Puzzle, W. H. Nichols | 779,438 |
| Puzzle, G. J. Maringer | 779,861 |
| Puzzle, C. H. Saunders | 779,874 |
| Pyrographic tool, H. Holton | 779,938 |
| Pyrotechnic device, F. T. Beck | 779,901 |
| Rack, J. H. Varty | 779,821 |
| Rail joint, J. A. McKelvey | 779,491 |
| Rail joint chair, J. L. McGhee | 779,958 |
| Rail protective device, third, Ryan & Gunter | 779,739 |
| Railway cattle guard gate, W. D. Hudgings | 779,693 |
| Railway construction, slot switch tongue and slot switch-box mechanism for contact, H. C. Stiff | 779,506 |
| Railway crossing, continuous rail, A. Campbell | 779,410 |
| Railway rail and chair, combined, C. A. Gilchrist | 779,706 |
| Railway rail fastening, R. G. Musgrove | 779,617 |
| Railway rail joint, C. A. Gilchrist | 779,707 |
| Railway signaling circuit, A. J. Wilson | 779,895 |
| Railway switch, H. Elliot | 779,695 |
| Railway tie, metallic, H. W. Avery | 779,756 |
| Railway track, J. W. Porter | 779,964 |
| Railway track structure, G. M. Ervin | 779,471 |
| Railway track structures, plate fastening for, G. M. Ervin | 779,470 |
| Railway track switch, electric, G. H. Fretts | 779,920 |
| Railway transfer, street, F. Riordan | 779,869 |
| Railways, system of electrical distribution for electric, J. H. Hallberg | 779,475 |
| Razor guard, E. P. Brewer | 779,580 |
| Reflecting and directing light, device for, H. P. Roberts | 779,563 |
| Refrigerator fastening, N. Leighton | 779,789 |
| Refrigerators, etc., overflow alarm or indicator for, N. Bessmann | 779,462 |
| Rheostat, automatic motor starting, Schattner & Haskins | 779,875 |
| Riveting machine, J. W. Nelson | 779,662 |
| Roadway surface composition, Jones & Meehan | 779,604 |
| Roasting furnace, F. Klepetko | 779,717 |
| Roof bracket, T. H. Kingston | 779,481 |
| Rotary engine, L. G. Bartlett | 779,800 |
| Rotary explosive engine, Farnell & Coryell | 780,013 |
| Roundabout, J. M. Taylor | 779,568 |
| Rubber plants, process of and apparatus for the separation and recovery of gum from, F. Ephraim | 779,696 |
| Sack closing grapple, S. Lee | 779,614 |
| Safe, Brenner & Allen | 779,579 |
| Sand washing and saving machine, W. B. Martin | 779,615 |
| Sanding or polishing machine, F. Urban | 779,630 |
| Sash, reversible window, A. Iske | 779,426 |
| Sash, self-closing window, C. D. Pruden | 779,801 |
| Sawmill carriage, J. C. Willard | 779,454 |
| Scale attachment, J. C. Dixon | 779,643 |
| Scale, beer, P. F. Carnady | 779,858 |
| Scale, cream test, W. H. Sargent | 779,873 |
| Scale making machine, P. F. Cohen | 779,872 |
| Scale, weighing, W. H. Sargent | 779,872 |
| Scale weight indicator, weighing, D. F. Curtin | 779,893 |
| Scales, relieving gear for railway, J. P. Newell | 779,732 |
| Scissors, A. M. Minter | 779,957 |
| Scraper, I. B. Hammond | 779,648 |
| Sea light, intermittent, G. Rocco | 779,803 |
| Seed drill, disk, E. Armbruster | 779,571 |
| Sewing machine, A. Desautel | 779,569 |
| Sewing machine attachment for producing drapery cords, C. A. Burns | 779,764 |
| Shade and curtain bracket, adjustable, C. A. Lee | 780,005 |
| Shaft, flexible, R. Sheenhelm | 779,669 |
| Sharpening the knives of guillotine cutting machines, apparatus for, A. V. Brown | 779,837 |
| Sheet feeding machine, J. E. Smyth | 779,875 |
| Sheet metal plate, G. H. Stewart | 779,887 |
| Sheller feeders, means for adjusting, C. E. Armstrong | 779,459 |
| Shipping case, H. A. Penrose | 779,568 |
| Shovel, W. S. Judd | 779,546 |
| Shovels, making, W. S. Judd | 779,547 |
| Sieve adjuster, D. H. Heuser | 779,424 |
| Signaling system, selective, W. D. Watkins | 779,893 |
| Silver emulsions, producing, J. Gaedcke | 779,777 |
| Siphon, P. McGrath | 779,865 |
| Skate, P. W. Finkle | 779,417 |
| Smelting furnace, A. E. Manchester | 779,953 |
| Smoking pipe, G. B. N. Dow | 779,694 |
| Snap hook, J. E. Steele | 779,675 |
| Snap hook, H. H. Uley | 779,890 |
| Snatch block, G. Nettie | 779,437 |
| Soap holder, washboard, L. L. Barton | 779,987 |
| Soldering, G. H. Stewart | 779,889 |
| Soldering furnace burner, E. T. Burgess | 779,523 |
| Soldering machine, can cap, A. Cerruti | 779,526 |
| Sole, shoe, W. E. Arnold | 779,683 |
| Speculum, C. F. Spangler | 779,885 |
| Speed indicator, rotary, G. Saaler | 779,624 |
| Spindle and bearing, T. A. Boyd | 779,835 |
| Spring. See Car spring. | |
| Stamp mill mortar, M. P. Bess | 779,521 |
| Staple setting implement, F. Wiseman | 779,680 |
| Starch, making nitrated, F. B. Holmes | 779,421 |
| Steam gage, Bourdon, W. I. Staaf | 779,812 |
| Steel, cutting self-hardening, J. Armstrong | 779,516 |
| Steel-hardening machine, J. W. Faessler | 779,841 |
| Steering boats, means for, J. E. Nicholson | 779,961 |
| Sterilizing apparatus, A. T. Pfeiff | 779,498 |
| Sterilizing organic substances, C. C. L. G. Bude | 779,637 |
| Stirrup, J. B. Hayden | 779,476 |
| Stock yard chute pen, A. C. Leonard | 779,658 |
| Steel seat, plane, F. P. Heitzman | 779,851 |
| Structural block, C. F. Linscott | 779,613 |
| Sugar bearing materials, treatment of, C. Steffen | 779,816 |
| Support, adjustable, C. C. White | 779,454 |
| Sweeper, floor, Dunaway & Melander | 779,773 |
| Tableau igniting machine, S. M. Gorham | 779,593 |
| Tag, umbrella, H. Cain | 779,409 |
| Telegraph and telephone transmission line, E. F. Reeber | 779,443 |
| Telegraph system, H. Shoemaker | 779,670 |
| Telegraph system, printing, J. Barry | 779,624 |
| Telephone bracket, S. J. Seifried | 779,504 |
| Telephone support, F. C. Howe | 779,840 |
| Telephone selecting system, W. D. Watkins | 779,892 |
| Telephone system, party line, W. W. Dean | 779,533 |
| Telephone system, selective, P. J. Albrecht | 779,982 |
| Telephone system, selective party line, A. J. Springborn | 779,811 |
| Telephone trunk line apparatus, W. O. Penell | 779,497 |
| Tent, E. I. Rice | 779,500 |
| Tent cottage, C. Schram | 779,446 |
| Thread separator, E. C. Reiter | 779,868 |
| Threshing machine, G. Anderson | 779,458 |
| Threshing machine band cutter and feeder, J. Hammond | 779,708 |
| Threshing machine beater, J. Hovey | 779,939 |
| Threshing machine feeding mechanism, automatic, E. P. Killinger | 779,855 |
| Threshing machine separator attachment, J. Schultz | 779,808 |
| Ticket issuing and recording machine, Ohmer & Bredenbaugh | 779,557 |
| Ticket or check holder, W. T. Willits | 779,455 |
| Tile for floors, walls, etc., combination, Mickey & Derry | 779,536 |
| Tiling, imitation, J. Singer | 779,883 |
| Time recorder, A. N. Palmer | 780,012 |
| Tire coupling, M. M. Artman | 779,830 |
| Tire cover, F. E. Bowers | 779,578 |
| Tire, pneumatic, B. C. Rowell | 779,444 |
| Tire, pneumatic vehicle, S. W. Fuller | 779,702 |
| Tire, vehicle, C. Stein | 779,505 |
| Tire, vehicle, J. Neary | 779,730 |
| Tire, wheel, J. S. Cushing | 779,588 |
| Tobacco stemming machine, L. P. Whitaker | 779,889 |
| Tongue support, J. C. Orr | 779,439 |
| Tooth, pneumatic, H. G. Keiten | 779,787 |
| Tooth, artificial, R. E. Payne | 779,496 |
| Torpedo, W. E. Matthew | 779,485 |
| Track construction, concrete, H. B. Nichols | 779,795 |
| Trenching machine, L. A. Desy | 779,415 |
| Trolley bridge, R. T. McCarroll | 779,554 |
| Trolley device, Reese & Weitzel | 779,441 |
| Trolley for electric railways, G. C. Hohein | 779,850 |
| Trolley retriever, E. J. Jonas | 779,654 |
| Trolley wire suspension device, T. P. Chandler | 779,640 |

8 REASONS WHY THE Locomobile

is Easily the Best Built Car in America

1. Standard design; no freak features.
2. Result of long experience on proper lines.
3. Special material for each part.
4. All material analyzed.
5. Forgings instead of castings.
6. Every part interchangeable.
7. Careful attention to minute details.
8. Convenience of the customer considered at every point.

Locomobile Co.
Bridgport, Conn.

WE CAN SAVE YOU 25 TO 75%

ON TYPEWRITERS of all makes

Send for samples of writing, prices, and catalogue. Machines shipped for inspection.

NEW YORK: 1 1/2 Barclay St.
BOSTON: 38 Bromfield St.

CHICAGO: 134 La Salle St.
KANSAS CITY: 817 Wyandotte St.
ST. LOUIS: 209 North 9th St.
SAN FRANCISCO: 536 California St.

THE TYPEWRITER EXCHANGE

GOOD SERVICE

You want it, don't you, in the execution of your orders? Good service, on intelligent understanding of the stock or commodity in which you are dealing, and to be in possession of all news affecting the markets, are the three attributes essential to securing the best results. We furnish all three: our 400-page, cloth bound illustrated

"Guide to Investors" will place you in possession of all facts relative to any stock dealt in upon the exchanges; our

"DAILY MARKET LETTER" keeps one in constant touch with financial matters and the trend of the markets. We issue both free upon request. Speedy exclusive private wires, connect all our offices, where you will find every convenience for the prompt and efficient execution of your orders. Why not open an account with us and give it a trial?

Haight & Treece Co

FOUNDED 1850
STOCKS, BONDS, GRAIN, COTTON
55 BROADWAY, NEW YORK CITY
Determining the character and financial responsibility of your Broker is as important as selection of right stocks.

THE PANAMA CANAL IS DESCRIBED from the engineering standpoint in SCIENTIFIC AMERICAN SUPPLEMENT 1359. Price 10 cents, by mail, Munn & Company, 361 Broadway, New York City, and all newsdealers.

RADIUM

is a rich man's luxury, but Yankee Radium costs only 15 cents per tube. Takes an expert to detect difference. Latest scientific novelty. Fool your friends. Larger tube, 25 cents. Boys make money selling. S-A-C CO., Sudbury Building, Boston, Mass.

THE SORTIE of the RUSSIAN FLEET

from Port Arthur on August 10, 1904, is discussed by a naval expert in SCIENTIFIC AMERICAN SUPPLEMENT, 1513; price 10 cents by mail. Diagrams and photographs showing the damage sustained by the Russian ships are published. Order from your newsdealer or from
MUNN & CO., 361 BROADWAY, NEW YORK

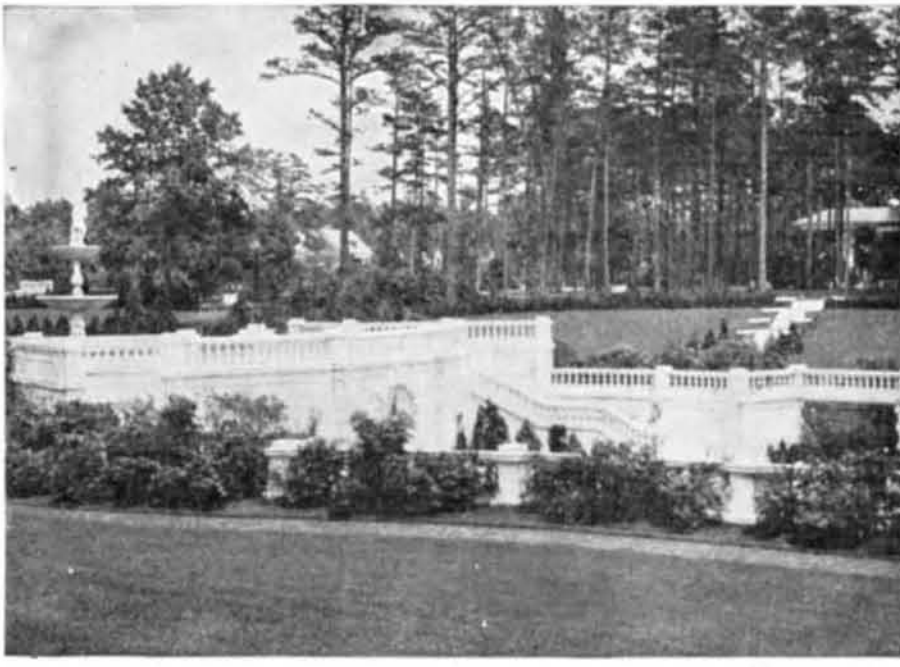
JUST PUBLISHED

American Estates and Gardens

4to. 11x13 1/2 inches. Illuminated Cover and 275 Illustrations. 340 Pages. Price, \$10.00

By BARR FERREE

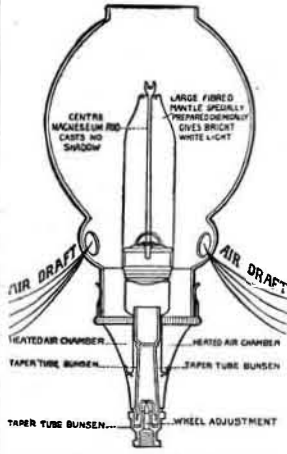
Editor of Scientific American Building Monthly, Corresponding Member of the American Institute of Architects and of the Royal Institute of British Architects



A SUMPTUOUS book dealing with some of the most stately houses and charming gardens in America. The illustrations are in nearly all cases made from original photographs, and are beautifully printed on double coated paper. Attractively bound. This book will prove one of the most interesting books of the season, and will fill the wants of those who desire to purchase a luxurious book on our American homes. An illustrated prospectus mailed free on request.

MUNN & COMPANY
Subscription Dept. O.O.
Publishers of "Scientific American"
337 Broadway, New York

The Science of the LINDSAY LIGHT



Here it is, so plainly illustrated that anyone can readily see why the Lindsay Light produces more light and better light from a less amount of gas than would be burned in the same time by an ordinary incandescent gas burner.

The Lindsay Light gives a forced pressure that sends the flame clear out to the end of the mantle, making it all incandescent—all light giving. It regulates the pressure of any gas system, allowing no waste from over pressure. The Lindsay Light mantle gives out a strong, white, brilliant light of 30 candle power.

FERRY'S SEEDS advertisement with logo and text: 'The most careful farmers and gardeners everywhere place confidence in Ferry's Seeds—the kind that never fail.'

ELECTRIC AUTOMOBILE. — DIRECTIONS, with many illustrations, for making a complete machine from two bicycles are given in SCIENTIFIC AMERICAN No. 1195.

WINTER CRUISES to the WEST INDIES advertisement for Hamburg American Line, featuring a ship illustration and text: 'Delightful Mid-Winter Cruises BY THE Palatial Twin-Screw Cruising Steamer "Prinzessin Victoria Luise" To the WEST INDIES'

PATENTS advertisement for Munn & Co., featuring a large 'PATENTS' logo and text: '50 Years' Experience. Trade Marks, Designs, Copyrights, Etc.'

Table of contents listing various items and their prices, including 'Trousers, R. Rochmill', 'Truck, car, J. C. Barber', 'Truck, hand, E. J. Bryan', etc.

DESIGNS table listing items like 'Fringe, J. C. Atkinson' and 'Trimming, C. Seidel' with their respective numbers.

TRADE MARKS table listing items like 'Cards, playing, R. Freeman', 'Cigars, stores, cheroots, and smoking tobacco, H. P. Straus', etc.

LABELS table listing items like '"Atlas," for mantles, Cluster Gas Light Co.', '"Crasper's Easy Workers," for a cathartic medicine, M. L. Crasper Co.', etc.

PRINTS table listing items like '"Blue Ribbon," for beer, A. von Cotzhausen', '"McKinley Tea," for a medicine, C. O. Larter', etc.

A printed copy of the specification and drawing of any patent in the foregoing list, or any patent in print issued since 1863, will be furnished from this office for 10 cents, provided the name and number of the patent desired and the date be given. Address Munn & Co., 361 Broadway, New York.

SPECIAL MANUFACTURING. DIES AND STAMPINGS TO ORDER. SPECIAL MACHINERY—MODELS—EXPERIMENTAL WORK.

ICE MACHINES. Corliss Engines, Brewers' and Bottlers' Machinery. THE VILTER MFG. CO., 899 Clinton St., Milwaukee, Wis.

CHEMICAL EXAMINATIONS OF ALL KINDS. DR. H. C. STIEFEL, Bissell Block, Pittsburgh, Pa.

MODELS & EXPERIMENTAL WORK. INVENTIONS DEVELOPED. SPECIAL MACHINERY. E. V. BILLAARD, Fox Bldg., Franklin Square, New York.

MODELS & EXPERIMENTAL WORK. Know the world over for efficiency and durability. Carburetors, Mufflers and Circulating Pumps. LOOMIS AUTOCAR CO., Westfield, Mass., U. S. A.

MODELS & EXPERIMENTAL WORK. Electrical and Mechanical Instruments. Small Machinery. EDWARD KLEINSCHMIDT, 82 W. Broadway, New York.

Dies, Tools and Special Machines, Models and Experimental Work. General Machine Work. P. J. BENDER & SONS, Inc., 87 Frankfort St., New York.

DRYING MACHINES. S. E. WORELL, Hannibal, Mo.

Dies, Tools, Models and Special Machinery. Model Machinery and Experimental Work. W. H. CRAWFORD, 134 Broadway, New York City.

Cement Books. How to use Portland Cement, 50c.; Portland Cement Saleways in Construction, 50c. Cement and Engineering News, 164 La Salle St., Chicago.

MODELS & CHICAGO MODEL WORKS. ESTABLISHED 1867. 179 E. MADISON ST. CHICAGO, ILL.

INVENTORS. We manufacture METAL SPECIALTIES of all kinds, to order; largest equipment; lowest prices. Send sample or model for low estimate and best expert advice FREE. THE EAGLE TOOL CO., Dept. A, Cin'ti, O.

THE VICTORIA UNIVERSITY OF MANCHESTER, ENGLAND. The Council desires to proceed to the APPOINTMENT of a PROFESSOR OF ENGINEERING. The Professor will be responsible for the organization of the Engineering Department, and will have the direction of the Engineering Laboratory.

EXPERT DIE MAKERS AND MACHINISTS. Moulds, Models, Experimental Work. INSTRUMENT MAKING and SMALL MACHINERY. THOS. H. HART & CO., Charlestown, Mass.

I Print My Own Circulars Cards &c. \$5 PRESS. Saves money. Big profit printing for others. Large press for book, newspaper, etc. Full instruction sent for use. Write for catalogue presses, type, etc. to factory. THE PRESS CO., Meriden, Conn.

BIG CLEARING SALE TYPEWRITERS. Fifty cents on the dollar. Over 1,000 machines. Our own new machines at standard prices on Easy Payments. Old machines taken in exchange. We rebuild and sell them. Less than half original cost. Supplies at half price. Agents wanted. Send for free catalogue. FAY-SHOLES CO., 205 Rees Street, Chicago, Ill.

Complete Electric Lighting Plant. Price, \$34.00. Dynamometer, for eight 16-c.p. lamps, \$28.00; lamps, wire, fixtures, etc., \$8.00; just suitable for residences, small factories, yards, etc. A strictly first-class guaranteed outfit. We wind for any special purpose to order, usually without extra cost. Send for Bulletin No. 3. The Elbridge Electrical Mfg. Co., Water Street, Elbridge, N. Y., U. S. A.

A MONEY MAKER. Hollow Concrete Building Blocks, Best, Fastest, Simplest, Cheapest Machine. PETTY JOHN BROS., 1815 N. 1st Street, Terre Haute, Ind.

PRINTING THAT BRINGS RESULTS PAYS YOU. WE attend to every detail of Writing, Illustrating, Printing and Binding Booklets. Inventors and manufacturers wishing to sell or exploit their patents can do it very effectively by good circulars and booklets. Estimates furnished. Send 8c. postage for samples and handsome souvenir engraving of St. Louis Exposition, 14x20, on 20x24 paper. C. L. WRIGHT & CO., 132-4-6 West 14th Street, New York.



A SPECIAL Automobile NUMBER OF THE Scientific American WILL ISSUE ON JANUARY 28, 1905. It will have a Colored Cover It will cost only Ten Cents

THE NEW YORK AUTOMOBILE SHOW and the PARIS AUTOMOBILE SHOW, both of them the most important automobile exhibitions ever held, will be reviewed. Striking pictures never before published will illustrate the principal models.

A NEW TYPE OF AMERICAN AUTOMOBILE will be one of the leading features. Improvement in tires, etc.

STRIKING MODELS of 1905 TOURING-CARS will be illustrated and described.

NOVEL TYPES of AUTOMOBILES will be pictured for the interest of the general reader.

In a division on Automobile Novelties, the automobilist will find instructive accounts of useful automobile accessories.

The pictures published, for the most part, have been prepared especially for this number and have been taken for the purpose of clearly showing the technical features of the carriages. Each article is based upon a careful study of the particular machine described.

MUNN & CO., Publishers Scientific American, 361 Broadway, New York

DON'T BUY GASOLINE ENGINES UNTIL YOU INVESTIGATE "THE MASTER WORKMAN," atwo-cylinder gasoline engine superior to all one cylinder engines; revolutionizing gas power. Costs Less to Buy and Less to Run. Quickly, easily started. No vibration. Can be mounted on any wagon at small cost—portable, stationary or tractor. Mention this paper. SEND FOR CATALOGUE. THE TEMPLE PUMP CO., Mfrs., Meagher & 15th Sts., Chicago. THIS IS OUR FIFTY-FIRST YEAR.