

sharpest blades are very quickly dulled in cutting cork? A. The elastic nature of cork makes it necessary to draw out in cutting cork, which is not usual in cutting wood. The draw cut tends to dull the edge of sharp cutting tools very quickly when cutting any kind of material.

NEW BOOKS ETC.,

GAS AND OIL ENGINE MANAGEMENT. By M. Powis Bale, M. I. Mech. E., A. M.I.C.E. New York: J. B. Lippincott Company. 1903. Pp. 110. Price \$1.50.

The author of this handbook has previously published two similar books for steam engine users, which have been very successful; and what counts for more, he has had fifteen years' experience with gas engines. The handbook gives a good many practical points regarding the care and operation of stationary gas and oil engines, and it also contains useful tables giving the calorific value of the various fuels ordinarily employed.

L'INDUSTRIA FRIGORIFERA. By Pasquale Ulivi. Milan: Ulrico Hoepli. 1904. 18mo. Pp. 168. Illustrated. Price 40 cents.

This small volume describes in detail the various methods used in producing cold and artificial ice for refrigerating purposes. The liquefaction of air and various gases is also treated quite thoroughly, and the different processes are described. The book also contains sixteen tables of value bearing on the subject treated.

EASY LESSONS IN ARCHITECTURE. By Thomas Mitchell. New York: The Industrial Publication Company. 1904. 12mo. Pp. 92. Numerous illustrations. Price 50 cents.

This little volume is intended to give rudimentary instruction in architecture to all interested in studying that most fascinating art. Each chapter consists of a number of questions and answers on some particular style or branch of architecture from the earliest times down to the present. The arrangement of the text in classified questions and answers puts it in very concise form, and makes the contents of the book easy to grasp and to remember. The present, or second, edition has been especially arranged for American readers. It will be found most useful to all who wish to know something of the main principles of architecture.

MARY OF MAGDALA. An Historical and Romantic Drama in Five Acts. The Original in German Prose by Paul Heyse. The Translation freely adapted and written in English Verse by William Winter. New York: The Macmillan Company. 1903.

We shall not quarrel with Mr. Winter for having done Heyse's religious drama into English blank verse. His rendering undoubtedly gains in dignity thereby. But we do seriously object to his having presented us with an expurgated version, when no expurgation was necessary. Winter's Mary is not Heyse's Mary. The German dramatist painted a strong picture of a woman exultantly sinful at first, bitterly penitent at the last. The American translator robs her of every trait of wickedness, and allows her to weep through four acts, with nothing to weep for. Confessedly ignorant of any knowledge of German, Mr. Winter presumptuously proclaims Heyse's text devoid of poetical or spiritual merit. Those who are blessed with a more intimate acquaintance with Heyse's splendid prose than is Mr. Winter, and who have not based their views on a "rough, literal translation," will find the original a more virile play, with stronger dramatic contrasts, than Mr. Winter would have us believe.

PUBLICATIONS OF THE MISSISSIPPI HISTORICAL SOCIETY. Edited by Franklin L. Riley, Secretary. Vol. VII. Oxford, Miss.: The Mississippi Historical Society. 1903. 8vo. Pp. 531.

The present volume is composed of a number of papers dealing with different phases of State history, and will certainly prove of interest to the historian and to residents of the State of Mississippi. There is an excellent chapter on the Mississippi floods by Dr. John W. Monette, and another chapter is on "The Progress of Navigation and Commerce on the Waters of the Mississippi River and the Great Lakes from 1700 to 1846."

LUFTVERUNREINIGUNG UND VENTILATION. Mit besonderer Rücksicht auf Industrie und Gewerbe. Von Dr. Josef Rambousek. With 48 illustrations and a table. Vienna and Leipzig: A. Hartleben. 1904. 8vo. Pp. 260.

The author starts out with an elementary discussion of ventilation principles, presenting a theory of ventilation and something of the technology of ventilation. In this particular part of the work the chief sources of impurity discussed are the exhalations of the human body. For this reason the earlier divisions of the book are confined to a discussion of the ventilation of dwellings, schools, churches, theatres, and the like. The second division, on the other hand, is devoted to a treatment of the ventilation of industrial buildings, such as factories impregnated with gases and dust. It is here that the author has given striking evidence of original investigation, for which reason these chapters constitute the most valuable portion of this treatise.

Wood-working Machinery. For ripping, cross-cutting, mitering, grooving, boring, scroll-sawing, edge moulding, mortising, for working wood in any manner. Send for catalogue A. The Seneca Falls Mfg Co., 655 Water St., Seneca Falls, N. Y.

ENGINE & FOOT LATHES. MACHINE SHOP OUTFITS, TOOLS & SUPPLIES. SEBASTIAN LATHE CO. CINCINNATI, O.

Foot and Power Turret Lathes, Planers, Shapers, and Mill Presses. SHEPARD LATHE CO., 133 W. 2d St., Cincinnati, O.

Heavy Overloads are Carried Safely when belts are made of the right stuff and in the right way. SCHIEREN BELTING is made of the best hides, tanned by the best oak-bark methods, and joined by our longitudinal lap construction. You can't put better belting on your pulleys. Our Dize Belt Book explains every step of the making. CHAS. A. SCHIEREN & CO. New York: 52 Ferry St. Chicago: 32 Franklin St. Boston: 192 Lincoln St. Pittsburg: 243 Third St. Philadelphia: 228 N. Third St. Denver: 1519 Sixteenth St. Hamburg: Pickhuben 4.

GIANT STEAM SHOVELS. Toledo Ohio, USA. The Vulcan Iron Works Co.

THE NICKEL PLATE ROAD AGAIN SELLING LOW RATE COLONIST TICKETS TO THE PACIFIC COAST. Tickets on sale every day, March 1 to April 30, at rate of \$42.50. These tickets are good in our trans-continental tourist sleepers and via any route desired beyond Chicago. For full particulars see local agents, or write R. E. Payne, General Agent, 291 Main Street Buffalo, N. Y., or A. W. Ecclestone, D. P. A., 385 Broadway, New York.

Warren's Natural Asphalt Sand Surfaced ROOFING. APPLY IT YOURSELF. MAKES A FINISHED GRAVEL ROOF. Comes ready to lay in rolls of 108 square feet. Write for sample, circular and prices. Warren Chemical & Mfg. Co., 18 Battery Pl., New York

HIGHEST GRADE GREY IRON CASTINGS For Gasoline Engines and Cylinders. All kinds of Automobile Castings. FRONTIER IRON WORKS, 2 Auburn Ave., Buffalo, N. Y.

Angle Benders. We make hand-power benders for forming angles in stock 1/2 in. thick and under. Light stock can be bent cold. WALLACE SUPPLY COMPANY 910 Royal Insurance Building, CHICAGO

PALMER MARINE and STATIONARY MOTORS. 2 and 4 CYCLE. are no experiment, as they are in successful operation in all parts of the world. Lathes in stock. Send for Catalogue. PALMER BROS. Cos. Conn. New York Office, 136 Liberty St.

Packard Four-Cylinder Model "L" 1904. Actual 22 horsepower, with only 85 lbs. loaded weight to each horsepower. Speed range of 4 to 40 miles per hour. Anti-friction ball bearing axles, direct drive, mechanical valves for intake and exhaust. Winner of highest prizes for BOTH speed and endurance wherever entered. \$3,000. Send for illustrated descriptive literature and name of nearest agent. PACKARD MOTOR CAR CO., Dept. 5, Detroit, Mich. Member Association of Licensed Automobile Manufacturers. New York Agents: PACKARD MOTOR CAR CO., of N. Y., 317-319 W. 5th St., New York City.

If You Want the Best Lathe and Drill WESTCOTT'S Strongest Grip, Greatest Capacity and Durability, Cheap and Accurate. Westcott Chuck Co., Oneida, N. Y., U. S. A. Ask for catalogue in English, French, Spanish or German. PRIZE AT COLUMBIAN EXPOSITION, 1893.

PERFECT - PUMP - POWER. is attained only in the TABER ROTARY PUMPS. They are mechanical simple and durable. Will pump hot or cold fluid, thin or thick. Requires no skilled mechanic. Most power at least cost. All parts interchangeable. Made of iron, steel or bronze. Can be driven by belt, motor or engine attachment. Large Illustrated Catalogue Free. TABER PUMP CO., 32 Wells St., Buffalo, N. Y., U. S. A.

DIE PRAXIS UND BETRIEBSKONTROLLE DER SCHWEFELSAEURE-FABRIKATION. Fueden Chemiker, Meister, Kammerfueherer, etc. Von Dr. S. Meirzinski. With 19 illustrations. Vienna and Leipzig: A. Hartleben. 1904. 16mo. Pp. 256. Price \$1.50.

This work may be considered a practical text-book on the manufacture of sulphuric acid. Under the heading "Chemical Control of Manufacture" only such processes are discussed which are actually in use in laboratories. These processes are so thoroughly and clearly described that even the unpracticed chemist may follow the steps described.

EVAPORATING, CONDENSING, AND COOLING APPARATUS. By E. Hausbrand. Translated by A. C. Wright, M.A., B.Sc. London: Scott, Greenwood & Co. New York: D. Van Nostrand Company. 1903. 8vo. Pp. 400. Price \$5 net.

It would be difficult to find a subject where the literature is as inadequate as that relating to evaporating and condensing apparatus, and the author has done a signal service to mechanical engineering in the production of the present book, which is an excellent one. That this book was needed is shown by the fact that the first German edition was exhausted in a very short time. The whole treatment of the subject is most scholarly. We regret that lack of space prevents our publishing at least an abstract of contents.

INDEX OF INVENTIONS For which Letters Patent of the United States were Issued for the Week Ending March 29, 1904.

AND EACH BEARING THAT DATE [See note at end of list about copies of these patents.]

Table listing inventions and their patent numbers. Includes items like Absorption apparatus, chemical, H. G. Schanche (755,705); Advertising card, W. T. & M. J. Sullivan (755,962); Aerial apparatus, J. Kaiser (756,169); Air brake mechanism, compound, E. G. Sherrt (756,065); Alpha-oxyanthraquinone, making, Schmitt & Tust (755,801); Annealing steel, L. D. Davis (755,629); Atomizer, J. P. Farmer (756,161); Automatic gate, J. Ashton (755,834); Automatic switch, S. C. Tussing (756,081); Awl, pocket sewing, J. L. Davidson (755,628); Axle box fastener, car, F. G. Koehler (755,891); Axle lubricator, C. J. Stone (755,886); Bag holder or rack and printing device, combination, W. A. O'Kane (755,957); Baling press, continuous, D. H. Linticum (755,896); Band cutter and feeder, C. H. Hill (755,661); Bandage, suspensory, E. R. Drake (756,005); Barrel soaking apparatus, B. Danner (755,626); Bath tub, H. P. Colle (755,747); Bath tub, electric, J. Zwiebel (755,830); Batteries, current selector for charging secondary, M. B. Hultisen (755,669); Battery plates, protective sheath or enveloper for, A. Meygret (756,173); Bearing, roller, R. F. Bower (755,992); Bearing spacer, wall, A. P. Smith, Jr. (756,069); Bearing, vertical shaft, E. M. Sanger (755,703); Bed attachment, E. E. Robertson (755,699); Bed bottom, spring, S. H. Anderson (755,987); Bed, folding or cabinet, H. Paschian (756,162); Beerwort distributor, R. Mally (755,901); Bell, W. W. Dean (755,630); Belt fastener, lady's, H. H. Taylor (755,811); Belt shifter, E. Kuthe (755,878); Belt shifter, H. J. Hoegh (756,020); Bench. See Washbench; Binder, J. O. Deckert (756,159); Binder, temporary, M. P. Exline (756,106); Bird trap, C. W. Gillis (755,762); Blinds, shutters, doors, etc. fastener for, G. Darling (755,627); Boat, submarine, S. Lake (756,030); Boiler furnace, steam, L. G. M. West (755,972); Boiler glass water gage, steam, G. S. Neely (756,134); Boiler headers, forming, J. P. Sneedon (755,718); Boiler water column, steam, G. H. Holland (755,875); Book and copy holder, stenographer's note, E. Sexton (756,147); Book marker and leaf holder, combined, C. L. Hrauda (756,115); Bottle closure, K. H. Cressman (755,623); Bottling machine, H. W. Colby (756,619); Brake, F. Stoltzenburg (756,188); Brake adjuster, F. E. Beary (756,082); Braking system, C. P. Stehmetz (756,807); Brazing cast iron, J. E. Tichen (756,079); Brazing compound, J. E. Tichen (756,080); Brick making machine, J. H. Venables (755,818); Bridge, J. Tomlinson (755,724); Brush, S. Zacek (755,985); Brush attachment, tooth, A. A. Petersen (756,138); Brush, fountain, H. A. Deten (756,103); Bucket, clam shell, W. K. Munroe (755,912); Bung mallet, J. M. Dieterle (755,633); Bunker, bin, etc., W. D. Napier (756,138); Bureau and wall trunk, combined, J. C. Lynch (755,682); Butter and making same, milk product resembling, J. H. Campbell (755,843); Button attaching machine, H. Kerngood (755,884); Button, cuff, J. Pejchar (756,047); Buttoner, E. B. Kleinsmith (756,027); Cabinet, N. A. McDonald (755,688); Calculating machine, A. C. Jackson (756,168); Camera support, W. G. Geier (755,649); Camera swing back, photographic, H. W. Lecke (755,680); Can. See Oil can; Can opener, R. P. Norton (755,789); Candle and shade holder, A. W. Hoffman (755,684); Candle molding machine, S. H. Leavenworth (755,892); Car brake, H. Jones (755,883); Car coupling, J. Meehan (756,174); Car coupling, auxiliary, J. W. Smith (755,805); Car coupling safety attachment, E. R. Trammell (755,816); Car coupling stirrup and centering device, railway, W. G. Cery (755,622); Car fender, A. E. McLean (755,788); Car fender, Heron & Crowley (755,872); Car fender, F. A. Schaff (756,060); Car operating mechanism, dumping, S. J. Johnson (755,671); Car ventilators, hood or injector for, H. B. Rowland (756,057); Car window, street, H. Witte (755,982); Cars on sidings, means for holding, H. Smelser (755,949); Cars, stanchion and strip for leading lumber, poles, etc., upon flat, H. D. Hunt (755,877); Carpet stretcher, E. J. Straeter (755,960); Carpet surface, machine for trimming pile, B. S. Smith (755,803); Carpet sweeper, E. O. Murdick (756,042)

THE PREMO as a Film Camera. By means of a Premo Film Pack Adapter, which is just the size of an ordinary plate-holder, any 3 1/4 x 4 1/4 or 4 x 5 Premo becomes a daylight loading film camera. It's then ready for 12 film negatives instead of 2 on glass and you may focus on the ground glass just the same. 3 1/4 x 4 1/4 Premo Film Pack Adapter \$1.00; Premo Film Pack, 12 exposures, 3 1/4 x 4 .70; 4x5 Premo Film Pack Adapter 1.50; Premo Film Pack, 12 exposures, 4x5 .50. Premos have every advantage of both plate and film cameras—the drawbacks of neither. ROCHESTER OPTICAL CO., Rochester, N. Y. Ask your dealer or write us for booklet "With Your Film in Focus."

THE SMITH PREMIER TYPEWRITER is strongly linked to the BUSINESS WORLD. Our interesting booklet explaining just why, sent on request. THE SMITH PREMIER TYPEWRITER CO. EXECUTIVE OFFICE 287 Broadway New York FACTORY Syracuse, N. Y.

Agents Wanted. Responsible men of ability to act as local agents for the No. 5 LINDSAY HIGH CANDLE-POWER LAMP. (For Natural, Artificial or Gasoline Gas.) 300 CANDLE-POWER. Rare chance for hustlers. Lindsay & Company Dept. 5, 170 Lake St., Chicago

Instructive Scientific Papers ON TIMELY TOPICS Price 10 Cents each by mail. HOME MADE DYNAMOS. SCIENTIFIC AMERICAN SUPPLEMENTS 161 and 600 contain excellent articles with full drawings. PLATING DYNAMOS. SCIENTIFIC AMERICAN SUPPLEMENTS 720 and 793 describe their construction so clearly that any amateur can make them. DYNAMO AND MOTOR COMBINED. Fully described and illustrated in SCIENTIFIC AMERICAN SUPPLEMENTS 844 and 865. The machines can be run either as dynamos or motors. ELECTRICAL MOTORS. Their construction at Home SCIENTIFIC AMERICAN SUPPLEMENTS 759, 761, 767, 641. THE MAKING OF A DRY BATTERY. SCIENTIFIC AMERICAN SUPPLEMENTS 1001, 1387, 1383. Invaluable for experimental students. ELECTRICAL FURNACES are fully described in SCIENTIFIC AMERICAN SUPPLEMENTS 1182, 1107, 1374, 1375, 1419, 1420, 1421, 1077. MISCELLANEOUS PAPERS ON ACETYLENE GAS will be found in SCIENTIFIC AMERICAN SUPPLEMENTS 1082, 1083, 1084, 1085, 1086, 1015, 1016, 1057. Price 10 Cents each, by mail. Order through your newsdealer or from MUNN & COMPANY 361 Broadway New York





**FREE TRIAL**  
**WITTE Gas and Gasoline ENGINES**  
 are sold on 30 Days' Trial. Get one. E. WITTE IRON WORKS, 517 W. 5th St. Kansas City, Mo. or Witte Gas & Gasoline Engine Co. 47 S. Canal St. Chicago, Ill.



**THE EXCELLENT GROUT**



**STEAM CARS**

Grout Brothers Automobile Co. CHANDLER, MASS.

**\$650**

**A Southern Home**  
 In a country free from excessive heat and cold, healthful and prosperous.

**LANDS at LOW PRICES**  
 For printed matter, circulars, etc., giving full particulars, write


**M. V. RICHARDS, Land and Industrial Agent,**  
 Southern Railway and Mobile & Ohio Railroad,  
 Washington, D. C.

**"Patent Steel" Wire Rope**

HAS NO SUPERIOR FOR HOISTING OR HAULAGE.

**BRODERICK & BASCOM ROPE CO.**  
 ST. LOUIS, MO.

**CRESTMOBILE \$800**  
 The BEST CAR Built in America



Proved by its Splendid Records. Tonneau for Four, \$850. Other LOW Priced Models. Export Prices \$850 Extra.

**CREST MFG. CO., Cambridge, Mass., U.S.A.**

**ELECTRIC SEWING MACHINE MOTOR.**  
 The instructions and numerous illustrations of details contained in this article will enable any mechanic of average ability to build an efficient motor that will operate a sewing machine. The cost of materials for this machine should not exceed five dollars. See SCIENTIFIC AMERICAN SUPPLEMENT, No. 1210. Price 10 cents by mail, from this office and from all newsdealers.

**Patents, Trade Marks, COPYRIGHTS, etc.,**  
**MUNN & CO., Solicitors of Patents.**  
 Office of the SCIENTIFIC AMERICAN,  
 361 Broadway, New York.  
 Branch Office: 625 F St., Washington, D. C.  
 Hand-book Sent Free on Application.

**Good Operators Say**  
 that they can do more and better work with less effort on the

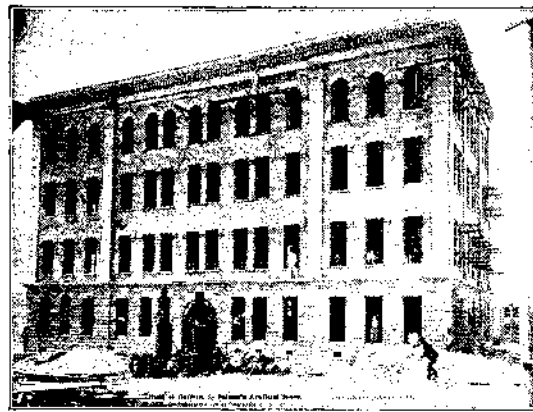
**Remington**  
 than on any other writing machine.

**Remington Typewriter Company**  
 327 Broadway, New York

Hame and trace connector, O. P. Letchworth	755,894
Harrow, adjustable A. E. H. Cheever	755,195
Harrow, rotary, J. N. Graves	755,654
Harvester elevator, grain, G. W. Beam	755,838
Hat rack, Johnson & Olaisen	755,923
Hay tedder, fork head, W. W. Shaw	755,922
Heat regulator, Peterson	755,928
High or low pressure signal alarm, F. H. Schmitz	755,708
Hog trough, J. C. Davis	755,753
Hoisting and conveying apparatus, T. Long	755,681
Hook and eye, C. Andersen	755,602
Hook for supporting tenting cloth, S. Hartman	755,658
Horse power baling press, J. M. and E. Valentine	755,084
Horseshoe, elastic tread, H. E. Irwin	755,779
Hose lining, Reid & Lab	755,140
Hose nozzle, G. A. Anderson	755,901
Hose nozzle holder, C. F. Brown	755,995
Hose supporter, A. M. Wilson	755,979
Hub casing, vehicle, G. A. McKeel	756,044
Hydrocarbon burner, A. J. Smithson	755,717
Hydrocarbon, sulfo lead compound of, F. T. P. Stephenson	755,808
Ice cream cabinet, brick, W. E. Brown	756,084
Incandescent light, retort, O. A. Mygatt	755,687
Incubator, Dolph & Knapp	755,639
Independently rotating wheel, J. J. Weiler	756,086
Index and derivatives, making, R. Knietzel et al.	756,171
Induction meter, P. G. Watmough, Jr.	755,819
Insulator, Kinsley & Bell	756,026
Insulator, L. McCarthy	756,181
Iron, tempering or hardening cast, Gilmour & Lindsay	755,763
Ironing machine, R. D'Angelo	755,752
Jackets of double walled vessels, fastening for, M. Missner	755,684
Jewel setting, L. Guild	755,654
Jig tank, G. T. Cooley	755,749
Joint, See Rail joint.	
Key holder, C. T. Sherman	756,064
Key, T. Hampton	755,655
Knitting machine thread presenting mechanism, C. H. Whitchee	755,975
Knuckle duster and revolver, E. Novak	756,182
Ladders, etc., suction and friction feet for, P. Shanahan	755,713
Lamp, L. Mentel	755,685
Lamp adjusting means, W. G. Morse	755,914
Lamp and socket, A. N. Soden	755,954
Lamp and target, combined switch, G. L. Mansfield	755,785
Lamp coupling, incandescent electric hanging or suspension, C. M. Pitel	756,050
Lamp, electric arc, E. Thomson	755,815
Lamp globe holder, arc, S. E. Deane	755,855
Lamp hanger, arc, H. R. Sargent	755,797
Lamp, miner's, J. Anton	756,151
Lamp socket, electric incandescent, Procter & Daley	755,697
Lamp support for convertible signal lanterns, electric, L. H. W. Kerber	756,117
Lamp switch, incandescent electric, C. M. Pitel	756,049
Last, T. O'Shaughnessy	755,820
Latch, T. O'Shaughnessy	755,923
Leather splitting machine adjusting device, Gay & Quigley	755,761
Ledger attachment, bank, A. Stonehouse	755,721
Legging, J. Peel	755,694
Liquid dispensing apparatus, V. S. Taylor	755,723
Lock, J. B. Miller	755,907
Locomotive ash pan, J. S. Whisenant	755,974
Locomotive crane, Fairbanks & Sauer	755,644
Loom, H. W. Smith	755,715
Loom picker stick lug strap, L. Pilling	756,048
Loom shuttle, E. P. Gresslaub	756,164
Loom shuttle, F. A. Mills	755,910
Loom weft replenishing mechanism, weaving, R. Starkie	755,720
Lubricant vaporizing device, Maignault & Graham	756,126
Lubricating device, B. F. Campbell	755,741
Lubricator, G. Schneider	755,802
Lubricator, H. Luenderoff	755,898
Lumber feeding machine, C. E. Cleveland	755,745
Mail bag for railway service, P. L. Neil	756,135
Manufacturing device, J. H. Petroskey	756,139
Martingale ring, J. Fisher	755,862
Match composition, F. E. Grimm	755,653
Match making machine, J. P. Wright	756,193
Mattress, woven wire, W. J. Rimmington	756,143
Maximum demand indicator, H. W. Brown	755,739
Measuring and examining machine, cloth, P. P. Schramek	756,146
Measuring device, W. B. Martin	755,902
Measuring instruments, inertia damper for electric, W. H. Pratt	755,919
Mechanical movement, G. H. Niles	755,919
Mechanical movement, G. A. Mearns	755,914
Mercerizing apparatus, Smith & Drum	755,716
Mercerizing machine, Barn P. Hahn	755,765
Metallurgical apparatus, G. W. Gesner	755,867
Miners' pick blades, etc., file or carrier for, Beeton & Wardall	756,093
Mirror support, J. H. Huxthal	755,668
Mixer, See Oil mixer.	
Mixing and kneading machine, L. A. Roberts	756,144
Molding machine, R. E. Davis	756,102
Mop holder, G. H. Crumb	756,100
Map wringer, J. A. Hoyt	755,778
Meier, T. Barrow	755,733
Meter starting device, induction, Reist & Henshaw	755,793
Meters, controlling induction, A. P. Zani	755,829
Meters, friction device for impulse, W. J. B. Smith	755,952
Mowing machine, J. A. Carter	755,844
Mowing machine attachment, C. Herman	756,114
Mowing machine clutch mechanism, W. F. Reed	755,935
Multiple rate meter, A. J. E. Fiege	755,757
Music box gramophone attachment, J. L. Schureman, Jr.	755,946
Musical apparatus, pneumatic, F. Schippers	755,944
Musical instrument players, note sheet feed mechanism for, J. D. Smith	756,070
Napping machine, M. La Fountain, Jr.	756,021
Nippers, cutting, E. Rorback	756,056
Note sheet guide mechanism, automatic, J. D. Smith	755,950
Numbering machine, E. P. Sheldon	756,063
Nut lock, C. F. Sperry	756,010
Nut lock, A. C. Fletcher	756,010
Nut lock, T. L. Russell	756,145
Oil burner, A. Johnson	755,880
Oil burning apparatus, Fraser & Hoyt	755,865
Oil can, F. B. Parker	755,927
Oil mixer and burner, W. S. Kengla	756,116
Ore crushing mill, E. A. Wall	755,725
Ore treating apparatus, T. A. Helm	755,871
Ores, treating, J. Smith	755,951
Overalls, H. S. Lanier	755,781
Paper bag forming or making machinery, C. H. & A. Day	755,754
Paper holder, toilet, S. S. Harrington	755,657
Paper pad holder, K. Franklin	756,013
Paring implement, R. M. Bobbin	755,604
Pasteurizer, W. T. Fegal	756,012
Pavements, machine for cutting trenches through asphaltic, G. Fernald	755,645
Peat immediately prior to compression, treating, W. A. Milne	756,129
Peat into blocks for fuel, machine for manufacturing, Kelland & Morrison	755,674
Pen filling device, fountain, H. Taylor	756,076
Pen supporting device, fountain, D. H. Haywood	755,870
Pencil sharpener, E. L. McDivitt	755,917
Photograph time controlling mechanism, J. E. Hett	756,017
Photograph and making same, color, R. W. Wood	755,983
Photograph machine, P. V. W. Welsh	756,087
Piano touch regulating attachment, Harris & Kendall	756,016
Pipe coupling, H. Broome	755,994
Pipe coupling, valve, M. T. Quigley	756,053
Pipe supporting bracket, adjustable, A. Clarken	755,847
Pipe wrench, K. Obierking	755,846
Plant protector, M. B. Lewis	756,123
Planter and marker, G. S. Boyd	756,153
Plow, S. W. J. Stone	755,959
Plow attachment, J. D. Crowe	755,624
Plow, gang, W. L. Cassaday	755,614
Pneumatic tube carrier, D. H. Jackman	755,878
Pole tip, vehicle, A. V. Swanson	755,964

# INTERESTED IN BUILDING?

Palmer's Hollow Concrete Building Block



Law Exchange, Jacksonville, Fla., built of Palmer's Hollow Blocks.

Machines use Sand and Cement  
 We Sell Machines, Not Blocks  
 Blocks

From These Machines give vertical flues within that produce the best ventilation, retard rain and moisture, and are positive non-conductors of heat and cold. These bricks are light, strong and hygienic. No danger of building too high with them. Made in nine sizes, from 8 inches upwards, all to fit without any cutting needed. Look like natural stone, last longer, and can be colored or ornamented as desired.

These machines for making the above turn out 400 to 600 cubic feet per day in hollow blocks. The blocks are absolutely fire, water, frost and vermin proof, and need neither paint nor repairs, require no backing of bricks, and safely carry floors, joists, beams and roofs.

Hollow space affords facilities for gas and water pipes, electric wires, speaking tubes, etc.

Exclusive territory for manufacturing with these machines can be secured by prompt action.

Write at once for full information.

**WARNING!**  
 Buildings erected with these patented blocks are subject to royalty and Mechanics' Lien, if same is not settled, unless parties erecting buildings have secured their licenses from The Harmon S. Palmer Hollow Concrete Building Block Company or their duly authorized agents.

**HARMON S. PALMER, HOLLOW CONCRETE BUILDING BLOCK CO. WASHINGTON, D. C.**

**Perfection AIR MATTRESS**  
 FOR HOME, CAMP AND YACHT



Cover drawn back, showing air sack and method of inflating.

**THE IDEAL BED**  
 For Home, Camp, Yacht, Hospital  
 Non-Absorbent—Hygienic—Odorless

When deflated can be rolled into small package for storage or transportation

**NO CAMPING OUTFIT COMPLETE WITHOUT THEM**  
 "Perfection" Air Cushions

For Office, Easy, and Invalid chairs, Yachts and Small Boats. Send for descriptive booklet "A" and price list.

**MECHANICAL FABRIC CO.**  
 Providence, R. I.

**RIDER AGENTS WANTED**

One in each town to ride and exhibit a sample bicycle. Write for special offer. Highest grade \$8.75 to \$17

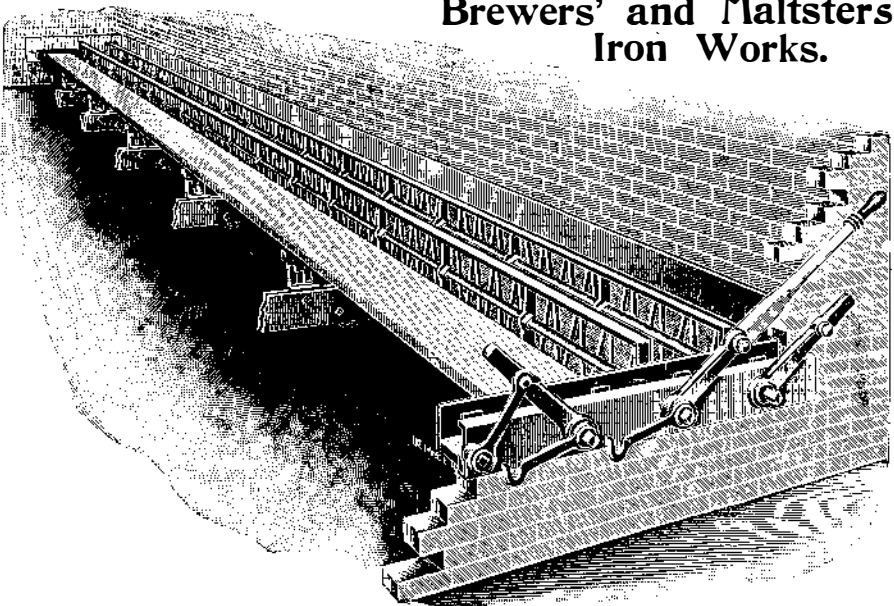
1904 Models \$8.75 to \$17  
 Coaster Brakes, Hedgehorn Puncture Proof Tires and best equipment.  
 1902 & '03 Models \$7 to \$12  
 Best Brakes  
 500 Second-Hand Wheels  
 All makes and models  
 good as new \$3 to \$8

Great factory clearing sale at half factory cost. We Ship on Approval without a cash deposit and allow 10 DAYS FREE TRIAL on every bicycle. Any wheel not satisfactory returned at our expense.

**EARN A BICYCLE** taking orders from a sample when furnished by us. Our agents make large profits. Write at once for catalogue and our special offer. **AUTOMOBILES, sewing machines, fires, sundries, etc., half usual prices.**

**MEAD CYCLE CO., Dept. 59c Chicago**

# W. TOEPFER & SONS, MILWAUKEE, WIS. Brewers' and Maltsters' Iron Works.



## Toepfer's Patent Automatic Dumping Kiln Floor.

Over Half Million Square Feet of Our Dumping Kiln Floors Now in Use.

After years of careful study, by men interested in the Malting and Brewing business, the art of malting has been brought to a point where the grain is steeped, grown and dried by machinery requiring but a small amount of skilled labor.

The first mechanical malt turner with the to-and-fro motion, shaft supplied with shovels, was invented and patented in 1871, by Wenzel Toepfer, late senior member of the firm of **W. Toepfer & Sons, Milwaukee, Wis.**, but being too complicated and expensive for the times it was never brought into actual use in the United States.

Great efforts were made to perform the turning of the malt on the kiln floors by means of machinery, however, many experiments in this direction have been made in malt kilns by Mr. Toepfer, to whom the honor is due of having, after many years of expensive experiments, perfected his mechanical malt kiln. That such an apparatus as this has proven to be a blessing, especially to the health of the workingman, is hardly necessary to explain, for everyone with a practical knowledge of malting knows what it means to work at times in a temperature of 40 to 80 degrees Reaumur, in vapor and clouds of dust, besides breathing the sulphur and other poisonous gases of the kiln fire. Moreover, under such conditions, it could not be expected to produce a malt of uniform mellow quality, without flinty and glassy kernels.

The malt house in which the first successful dumping kiln floors were installed was the Pabst Brewing Co. They are still in use after twenty-two years of continual work. Over a half million square feet of these floors are now in use in the United States and foreign countries.

Recently, the **Dumping Kiln Floor** has been improved in several ways by Peter G. Toepfer, sole proprietor of **W. TOEPFER & SONS, MILWAUKEE, WIS., U. S. A.**

**Stopping Stopping**  
Is where you save time, bother, danger, work.

**THE GILLETTE Safety Razor**

Always sharp, always ready to use. Guaranteed to shave all faces, under all conditions. Nothing to adjust, nothing to learn—just shave. Twenty double-edged blades furnished with each razor; each one will give an average of twenty smooth, satisfactory shaves. When one gets dull put in another; when all are dull we sharpen and return them all ready to use for fifty cents.

**Saves Time and Money. No Stropping, No Honing.**  
Forty edges ready to shave with and no work to get the four hundred shaves. No guards to fasten, no pulling, noscraping. You can shave yourself in the time used to reach the barber shop, and you take no health risks. Write for free descriptive booklet. Sold direct if not carried by your dealer. Money refunded if you are not satisfied after 30 days trial. References: Continental National Bank, Chicago; Dun and Bradstreet Agencies.

**GILLETTE SALES COMPANY, 1207 Manhattan Bldg., Chicago.**




**Undeniable Excellence**  
Marks every point in the design, construction and appointments of

**PEERLESS Direct Drive TOURING CARS**  
\$3,700 to \$6,000

They are built to give solid comfort and to stand wear without constant attention. Four-cylinder vertical motors, sliding gear transmission, bevel gear drive direct on high speed—forced feed lubrication, long wheel base, cold-rolled pressed steel frame.

These are only a few points of Peerless perfection. The catalogue tells the rest. Photograph of the Peerless Girl No. 1, 15x25 in., free from advertising, mailed for 10 cents.

**PEERLESS MOTOR CAR CO**  
Cleveland, Ohio  
Member Association Licensed Automobile Manufacturers.

**INVESTORS**

desiring to realize the Large Interest and Profits possible in legitimate Mining, Oil, Timber & Smelter Investments and Dividend-paying Industrial Stocks, listed and unlisted, should send for our Booklets, giving full information, mailed free.


**DOUGLAS, LACEY & CO.,**  
Bankers & Brokers, 66 Broadway, New York

**"Globe" GASOLINE Marine Engines**

Improved. Simple. Reliable. Economical. Substantial. Prices Right. Guaranteed. Write for Catalogue. Built by....

**PENNSYLVANIA IRON WORKS CO., Philadelphia, Pa. and 136 Liberty St., New York, U. S. A.**

**The NEW BRISTOL Counter**



Registers an accurate account of work done on printing presses, grain talls, weighing, measuring and other automatic machines. Counts up to 1,000,000 and repeats automatically. Simple, accurate, durable. Special counters to order. Send for circular. C. J. ROBT, Bristol, Conn.

A splendid fit across shoulders, chest—everywhere.


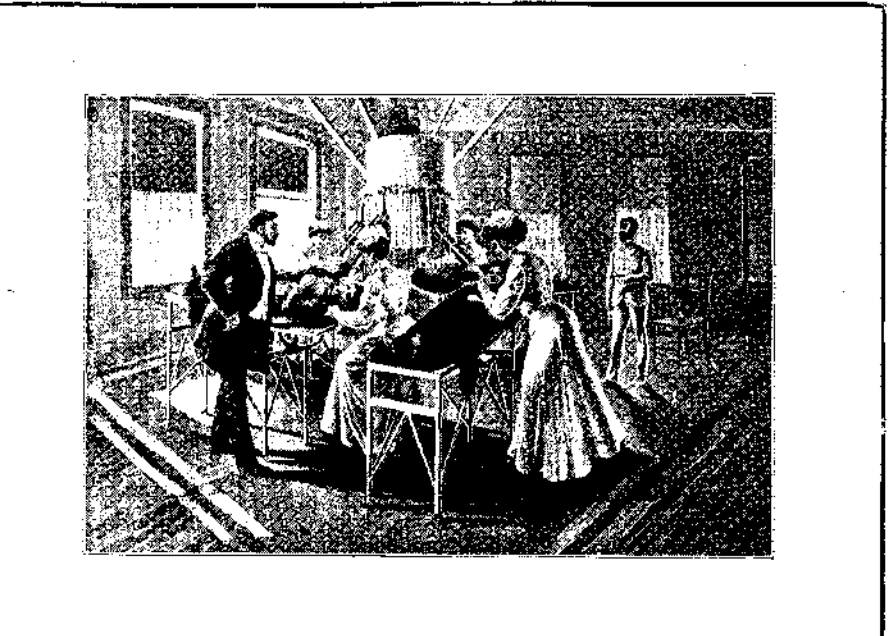
**MODEL SHIRTS**

combine the style, comfort and choice of fabric secured in "made-to-order shirts," with the price of ready made shirts.

LOOK FOR THIS MARK. ASK YOUR DEALER.

Try our coat shirts. Write to-day for our booklet—All about good shirts and the style to wear on certain occasions.

**Model Shirt Co., 30 Century Bldg., Indianapolis, Ind.**

**Finsen Light Cure in America**

At the American branch of the Finsen Light Cure we have the only complete high power Finsen apparatus in this country.

The picture shows one of our four large Finsen lamps in the actual work of curing disease; operated by physicians and assistants trained under Dr. Finsen in Copenhagen. With the same apparatus and methods we are obtaining the same wonderful results secured in the parent institute.

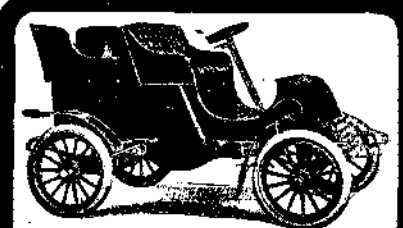
We all know that there is life, health, strength, in the sunshine. Dr. Finsen has reduced this principle to a scientific, practical working basis. His method of cure is Nature's own way; painless, drugless; just the application in concentrated form of the healing rays of light—the actinic or Finsen rays—to the affected tissues. Disease germs wither and die; results are positive and permanent.

The light treatment is not a cure-all; not a quick-acting treatment; but it is sure in many diseases regarded as incurable. Lupus (Consumption of the Skin), Eczema, Epithelioma (Skin Cancer), Goitre, Acne, Psoriasis, Consumption (Pulmonary Tuberculosis in its early stages); with these the light cure seldom fails.


We will send free, an eighty page book describing the Finsen Light Treatment and showing photographs of many cured ones to whom we refer by permission: also a copy of the official report endorsing the light cure filed at Washington by Honorable R. R. Frazier, United States Consul at Copenhagen.—Do you want these?

**Finsen Light Institute of America**  
Suite D 78 State Street Chicago

Potato bug machine, M. Harman.....	755,768
Power transmitting apparatus, M. L. Schleuter.....	755,799
Press rack, Morrison & Merlock.....	756,037
Printing on inflatable articles, E. C. White.....	755,976
Printing press delivery track, G. P. Fenner.....	756,008
Printing press grip finger, H. D. Fleshtz.....	755,863
Printing press, multicolor and text, B. R. M. Sieberth.....	755,948
Propeller, self-clearing, C. H. Lee.....	756,031
Pulley mechanism, reversible, W. H. Kessler.....	755,885
Pulp grinder, wood, J. H. Baker et al.....	755,988
Pump, centrifugal, McKay & Hildreth.....	755,690
Pump, double acting force, E. J. Hannah.....	756,113
Pump head, H. M. Etter.....	756,105
Pump, rotary, H. E. Deckebach.....	755,681
Pump, steam engine air, R. Richardson.....	755,938
Rack. See Hat rack.	
Racking apparatus, beer, H. W. Celby.....	755,618
Rail bond, electric, J. Landis.....	755,889
Rail joint, J. B. Clime.....	755,848
Rail joint coupling, J. W. Hafer.....	755,764
Railway brake apparatus, G. T. and L. Woods.....	755,825
Railway crossing, G. W. Willebrandt.....	755,730
Railway electric traction system, A. Meuschel.....	755,905
Railway road bed construction, W. H. Swiggart.....	755,810
Railway safety block switch, C. E. Davis.....	756,101
Railway semaphore signal, M. D. Hanlen.....	755,656
Railway signal apparatus, trolley, A. L. Cheatham.....	756,156
Railway switch, Wharton & Angerer.....	756,088
Railway system, electric, T. Mahoney.....	755,892
Railway tie, Nichols & Neff.....	756,058
Rain gage, J. P. Friez.....	756,108
Ratchet drill, T. L. Pyburn.....	755,933
Reflector, E. L. Zalinski.....	756,194
Refrigerator, J. F. Horn.....	755,876
Refrigerator, J. M. Doppel.....	756,004
Rein holder, P. K. Barclay.....	755,990
Rheostat, Yates & Zimmer.....	755,827
Rheostat, W. C. Yates.....	755,828
Roofing, J. H. Munro.....	756,180
Rope clamp, F. L. Doty.....	756,104
Rotary engine, E. A. Franzen.....	755,758
Routing machine clamp, V. Boyle.....	756,058
Rule, protractor, L. Rhodes.....	756,055
Saddle, F. Mesinger.....	755,904
Sash bar, ventilating, F. Lyster.....	755,784
Saw set, O. E. Sticker.....	756,187
Sawing machine, T. C. McCormick.....	755,916
Scaffold, portable, A. G. Maxey.....	756,034
Scale, pocket, A. F. & W. Meisselbach, Jr.....	756,175
Scarf pin, G. W. Dover.....	755,856
Scope and weighing apparatus, combined, J. L. Taylor.....	755,966
Scraper, metal, wood, etc., and means for operating same, G. C. Smith.....	755,804
Seeder and planter, W. L. Cassaday.....	755,613
Sewer trap, F. Osterle.....	756,046
Sewing machine magnifying attachment, S. Jones.....	756,024
Sewing machine speed holder, A. Gorton.....	756,103
Shade adjuster, window, R. Aten.....	755,835
Shaper, vertical, L. H. Colburn.....	755,849
Sheet metal band for pipe coverings, etc., B. H. Larkin.....	755,679
Shell grazer and separator, G. W. Schreurs.....	755,710
Shell head feeding apparatus, F. W. Olin.....	755,821
Shifter, J. H. Wilson.....	755,880
Signal device, electric, Laney & Longnecker.....	755,890
Siphon, H. P. Roberts.....	755,941
Sister hook, T. H. Brady.....	755,841
Skirt gage, M. M. McGowan.....	756,043
Skirt holder, F. G. and R. O. Spear.....	756,149
Skirt or garment supporter, W. G. Johnson.....	755,881
Skirt supporter, T. N. Schebler.....	755,798
Sleigh attachment, bob, A. Reckstad.....	755,942
Sleigh, steam, J. R. Tibbits.....	756,078
Soap and making same, G. A. Schmidt.....	755,945
Soap, etc., apparatus for making chip, W. M. Morse.....	755,915
Soap receptacle, W. E. Reussen.....	755,700
Speed differentiating device, F. H. Cheyne.....	755,616
Spinning apparatus, yarn, J. Hayden.....	756,166
Spraying device, R. B. Williamson.....	755,823
Spring. See Vehicle seat spring.	
Spring, O. D. White.....	755,729
Spring motor, F. A. Richter.....	755,839
Stack climber, C. Stoelre.....	755,808
Stacker, pneumatic, A. P. & W. M. Roberts.....	755,840
Stage and circus ring, combined, J. J. Jacobs.....	755,879
Stamp mill mortar box, D. B. Morrison.....	755,913
Stamping apparatus for crushing ores, etc., B. Morrison.....	755,686
Staple making machine, H. L. and W. Edge.....	755,755
Station indicator, O. H. Bissell.....	755,735
Steam generator, M. H. Plunkett.....	756,051
Steam generator, S. Straker.....	755,073
Steam, system of economical production of superheated, A. Leclere.....	755,893
Steel plates, locally softening or annealing hardened, C. P. E. Schneider.....	755,709
Stecking supporter, T. P. Taylor.....	755,812
Stoker, mechanical, E. & H. R. Bretney.....	755,611
Stone sawing machine, G. D. Hunter.....	755,867
Stool, F. Schellenbach.....	755,706
Storing, displaying, and measuring goods, means for, B. C. Miller.....	756,128
Stove for heating irons, etc., A. V. Maniacchi.....	756,033
Stove, oil, E. E. Flara.....	755,864
Stovepipe holder, C. W. Elderkin.....	756,041
Straining attachment, milk can, J. H. Blaney.....	756,609
Street indicating mechanism for vehicles, E. L. Nichols.....	756,136
Striking bag support, G. McFadden.....	755,688
String cutter, Hannan & Redehaver.....	756,869
Surgical instrument for hemorrhoids, J. W. O'Neill.....	755,921
Swaging apparatus, J. S. Reed.....	755,685
Switch, E. M. Hewlett.....	755,772
Tablet, writing, D. F. Curtin.....	755,825
Tableware, inlaying blanks for flat metal, W. A. Warner.....	755,727
Tacker, hand, S. Beauregard.....	755,839
Talking machine meters, multispeed device for, W. N. Dennison.....	755,852
Talking machines, combined regulator and brake for, W. N. Dennison.....	755,851
Tank, J. W. Wallace.....	755,971
Teletype, multiplex, S. B. Field.....	755,947
Telephone cabinet, W. B. Atick.....	756,094
Telephone call attachment, J. J. Ny.....	756,183
Telephone selective system, McKinsey & Nelson.....	755,691
Telephone system, R. Hamilton.....	755,868
Temperature and moisture regulating apparatus, W. A. Milne.....	756,130
Tempering and coloring apparatus, E. Chambers.....	755,998
Tennis table, J. H. Ricau.....	755,936
Thill support, E. L. Buckingham.....	755,997
Threshing and separating machine, J. E. Sanders.....	755,943
Ticket system, transportation, P. C. Deckstaedter.....	755,638
Tilting bin, B. F. Barnes.....	755,605
Time recorder, workman's, J. J. Stockall, Jr.....	755,958
Tire armor, vehicle, M. Miller.....	756,127
Tire, vehicle, W. H. Sewell.....	755,711
Tire, vehicle wheel, W. H. Sewell.....	755,712
Tires, machine for equipping vehicle wheels with rubber, G. E. Linn.....	755,885
Tool attachment, Jarvis & Lane.....	756,187
Tool, I. D. Worcester.....	755,854
Train control system, G. P. Whittlesey.....	755,822
Transformer, W. A. Hall.....	755,766
Transformer, L. M. Schmidt.....	755,800
Transmission mechanism, G. & H. P. Dilig.....	755,635
Trolley head, electric, Cherry & Clive.....	755,999
Truck, car, F. G. Koehler.....	755,887
Truck, hand, E. J. Bryan.....	756,096
Truss pad fastening device, J. E. Lee.....	756,122
Tube coating machine, J. W. Howell.....	755,777
Tunnels, shafts, and other excavations, constructing, C. S. Smith.....	755,856
Turbine bucket wheel, steam, Hamilton & Ver Planck.....	755,767
Turbine, elastic fluid, W. L. R. Emmet.....	755,756
Turnbuckles, making, W. E. Renner.....	756,141
Typewriter line spacing mechanism, J. Alexander.....	755,831
Typewriter's chair, piano stool, etc., H. W. Bolens.....	755,991
Typewriters or analogous machines, tabulating attachment for, G. L. Palmer.....	755,926



Model A  
With Detachable Tonneau,  
\$250.00.



Model B, Touring Car  
\$400.00.  
Without Tonneau, \$300.00.

**CADILLAC**

**Our Cars and Our Record— Do You Know Them?**

The first Cadillac was put on the market early in 1903.

"Can't be sold profitably for the money," competitors said, and prophesied an early rise in price or decline in quality.

The end of the year saw the country full of satisfaction-giving Cadillacs, and our sales exceeded by those of only one manufacturer.

In the recent contest a stock Cadillac went up Eagle Rock Hill on the high gear in 3:19, winning first prize for vehicles of its class and defeating all machines under double its rated horse-power.

At all the big auto shows this season, where the most discriminating purchasers are found, the Cadillac exhibits have been centers of attraction to an extent that speaks volumes both for the reputation of the Cadillac and for the mechanical excellence of the machines exhibited. More Cadillacs were sold during the New York Show than any other make.

Model B, embodies more novel and exclusive features of merit than can be found in any other automobile, no matter what the price.

Frame is of pressed steel; running gear and suspension system an absolutely unique and unrivaled combination of strength and flexibility that makes the car ride over the roughest roads as safely and smoothly as a Pullman coach. In points of speed, design, construction, luxury of appointments, ease of control and quietness of running, it is all that the name Cadillac stands for—greatest results; fewest complications. All 1904 Cadillacs are equipped with clincher tires.

Model A carries several improvements, otherwise it is the same safe, speedy, reliable machine as last year, and is sold at the same price—\$275.00 as a runabout; \$350.00 complete with detachable tonneau.

Our handsome new booklet N explains and illustrates both models in detail, and gives address of agency nearest you where they may be seen and tried. Free on request.


**CADILLAC AUTOMOBILE COMPANY**  
Detroit, Mich.  
Member Association of Licensed Automobile Manufacturers

**PRINTING TAUGHT FREE**

With every Model Printing Press and outfit (cost \$5, and up) we give free a complete course in the art of printing. While you're learning you can make money at home by printing for others. Write for particulars, and catalogue No. 10. Three World's Fair Highest Awards. **THE MODEL PRESS** 708 Chestnut Street, Philadelphia.



**WRITE TO-DAY**  
for list of users of the Dean Boiler Tube Cleaner who live near you.



Ask any of them regarding its merits. They will tell you it saves hundreds of dollars every year. More of them are in actual use than of all other cleaners combined. Will send one for free trial.

**WM. B. PIERCE CO.**  
319 Washington St. Buffalo, N. Y.

Price \$210

**Warwick Motor Cycles**

New Grip Control. Many other new features. The Best yet. Weight, 99 lbs. Send for catalog.

Warwick Cycle and Automobile Co., Springfield, Mass.



**SPECIAL MACHINERY** Dies, Tools, Models, Stampings, Patented articles manufactured by contract. **Nye Tool and Machine Works, 200 So. Clinton Street, CHICAGO.**

**X-RAY.** All coils guaranteed not to break down.

INDUCTION COILS, 8 volts, will give 8-inch sparks, \$35.00.


Send for Circular "S"

**N. O. NELSON & COMPANY**  
171 Randolph St., Chicago

**GLOCAU'S ALCOHOL GAS STOVE**

For travelers, sick rooms, boarders, light house-keeping, wherever gas is not available or desirable. Makes its own gas by first vaporizing the alcohol. Consumes but 2 cu. in. worth of alcohol gas or wood alcohol in an hour. Non-explosive. Burns smokeless, odorless, and clean. Reservoir holds 7 ounces of alcohol. Holds a quart of water in 3 minutes. Nickel plated. Sent postpaid anywhere for \$7.

**S. A. GLOCAU CO., 17 Quincy St., Chicago, Agents wanted**

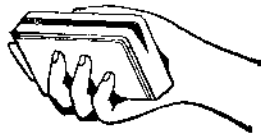






IF YOU SHOOT A RIFLE... THE LATEST ENCYCLOPEDIA OF ARMS, POWDERS, SHOT AND BULLETS...

The Only Scientific Soap in the World



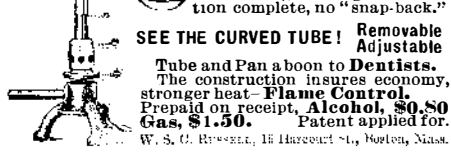
'VELVA' is the only scientific Toilet and Pumice Soap combination manufacturer...

WILLARD CHEMICAL CO., 9d Cornhill, Boston, Mass.

A. W. FABER

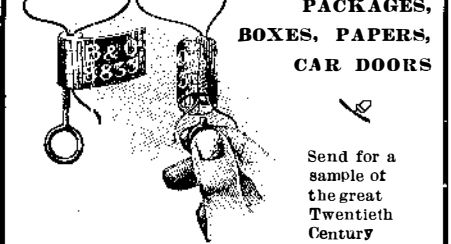
LEAD PENCILS, COLORED PENCILS, SLATE PENCILS, WRITING SLATES, INKS, STATIONERS RUBBER GOODS, RULERS, ARTISTS' COLORS.

Perfection in Burners



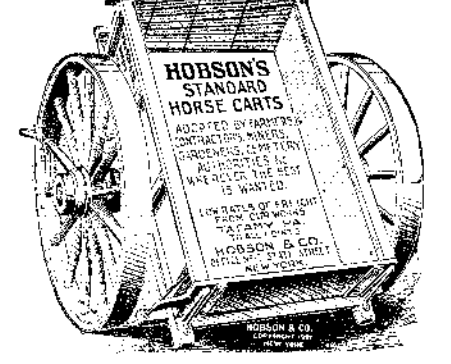
For coal or gasoline gas. Oxidation complete, no "snap-back." SEE THE CURVED TUBE! Removable Adjustable...

Auto-Sparker



Does away entirely with all starting and running batteries, their amperage and expense. No bell-no switch-no batteries...

SEALS BOTTLES, PACKAGES, BOXES, PAPERS, CAR DOORS



SIGNATURE SEAL. THIS Seal has two parts--the Lock and Breakable Key...

HOBSON'S STANDARD HORSE CARTS



50 Years' Experience PATENTS Trade Marks, Designs, Copyrights, Etc.

Table listing various mechanical parts and their prices, including typewriting machines, valves, and pumps.

DESIGNS.

Table listing various designs and their prices, including dish mounting, lamp bases, and Statuettes.

TRADE MARKS.

Table listing various trade marks and their prices, including ale, hops, beef, and medicinal tonics.

LABELS.

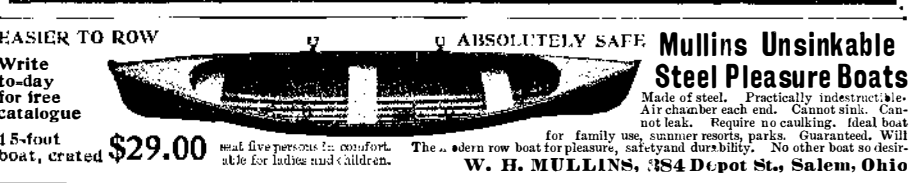
Table listing various labels and their prices, including 'Anti-Uric', 'Beech Nut Sliced Bacon', and 'Gilt Edge Cereal'.

PRINTS.

Table listing various prints and their prices, including 'Baeritine', 'Blue Ribbon Shoes', and 'The Queen'.

A printed copy of the specification and drawing of any patent in the foregoing list, or any patent in print issued since 1863, will be furnished from this office for 10 cents...

PERFORATED METAL OF EVERY DESCRIPTION AND FOR ALL USES.



EASIER TO ROW ABSOLUTELY SAFE Mullins Unsinkable Steel Pleasure Boats. Write to-day for free catalogue.

SPECIAL MANUFACTURING. DIES AND STAMPINGS TO ORDER.

EXPORT TRADE. How to Secure and How to Hold It. Valuable hints on how to secure Export Trade sent gratis on request.

ICE MACHINES.

MODELS & EXPERIMENTAL WORK. Inventions developed. Special Machinery.

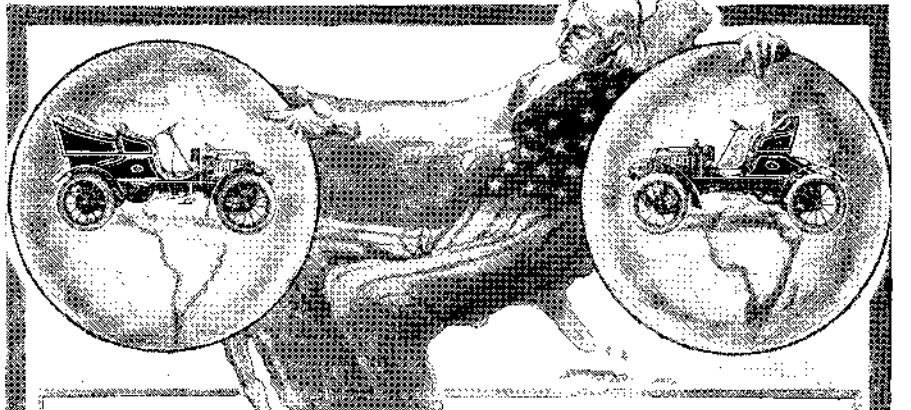
SPECIAL MACHINERY.

CHEMICAL EXAMINATIONS OF ALL KINDS.

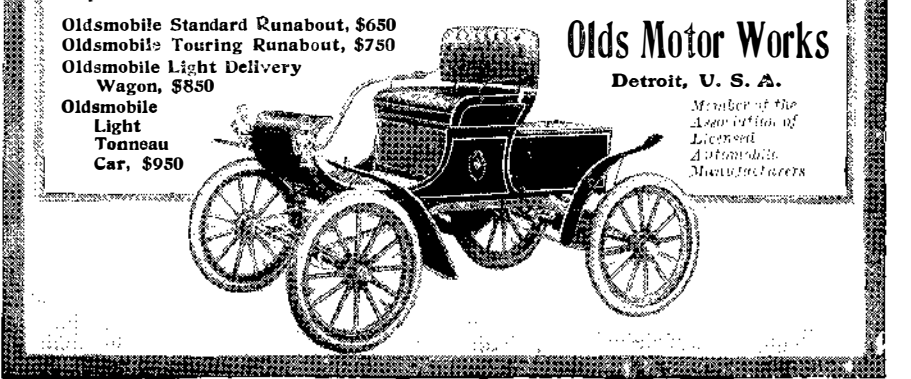
The National Sheet Metal Works.

MASON'S NEW PAT. WHIP HOIST.

OLDSMOBILE



You see them wherever you go, They go wherever you see them. All nations pay willing tribute to the Oldsmobile. Its unequalled motor equipment...



WANTED Agency for Practical Counting Machine

Are you interested in Patents, Model or Experimental work? Our booklet entitled 'WHAT WE DO--HOW WE DO IT' will be sent to you on request.

NOVELTIES & PATENTED ARTICLES

MAGICAL APPARATUS. Grand Book Catalogue Over 700 engravures. 25c. Faylor Tricks Catalogue, free.

Experimental & Model Work

ELECTRICITY HOW TO MAKE. A Dynamo, Storage Battery, Telegraph Instrument, Electric Bell, Motor, 5 Books, 10c. each.

MODELS & GEARS

MATCH MACHINERY.

NOTICE TO CONTRACTORS.

The Board of Visitors of the South Carolina Military Academy asks for Plans, Specifications, and Bids for placing a Heating and Lighting Plant in the Military Academy, known as the Citadel, in the City of Charleston, S. C.