

ELECTRICAL ENGINEERING TAUGHT BY MAIL.

Write for our Free Illustrated Book. "CAN I BECOME AN ELECTRICAL ENGINEER?"



\$250.00 A MONTH AND EXPENSES MADE.

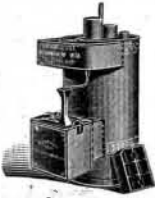
Magic Lamp. MAKES ITS OWN GAS.



THE MAGIC LIGHT CO., CHICAGO, ILLS., U. S. A.

Acetylene Gas Lighting

Reduced to the most efficient, safest, simple and economical use.



NIAGARA FALLS ACETYLENE GAS MACHINE CO., Niagara Falls, N. Y. and Canada.

D. L. HOLDEN REGEALD ICE MACHINES

A STRONG CONTINGENT, Having Ample Capital, Is Ready to Consider Propositions for the Development of Enterprises Throughout the United States or its Tributaries.

The building of Railroads, Water Works, Gas Works, Electric Trolley Systems, Lighting Plants, Patents and all other legitimate enterprises will be considered upon their merits.

Porter's Humane Bridle.

No Bit in the Horse's Mouth. Horsemen endorse this Bridle because it is the best for all horses.



Porter Humane Bridle Co., Dept. A, Sudbury Building, Boston, Mass.

ARTESIAN

Wells, Oil and Gas Wells drilled by contract to any depth from 50 to 300 feet.

PIERCE WELL ENGINEERING AND SUPPLY CO., 136 LIBERTY STREET, NEW YORK, U. S. A.

The Pipe of the Century.

"MALLINCKRODT" PATENT NICOTINE ABSORBENT AND VENTILATED SMOKING PIPE IS THE ONLY PIPE FIT FOR A GENTLEMAN'S USE.

Table of contents listing various mechanical designs and their page numbers, including items like 'Sausage stuffing machine', 'Saw blades', 'Saw gage', etc.

Table of contents listing various designs and their page numbers, including items like 'Badge, J. T. Bailey', 'Barrel, G. D. Canfield', 'Bedclothes bolder', etc.

PERFORATORS OF ALL METALS. For Cotton, Oil and Rice Mills, Fertilizer, Mining, Concentrating, Gas and Water Works, Threshers, Separators, Corn Sheller, and all kinds of Grain Cleaning Machinery.

FOR SALE. Machine Shop, brass and iron foundry not large, but well equipped. Present owners not active nor conversant with the business.

A Splendid Opportunity for a manufacturer or small Telephone Co. A Telephone Transmitter for sale.

\$3 a Day Sure. Send us your address and we will show you how to make \$3 a day absolutely sure.

50 YEARS' EXPERIENCE PATENTS. TRADE MARKS, DESIGNS, COPYRIGHTS & C.

Scientific American. A handsomely illustrated weekly. Largest circulation of any scientific journal.

MUNN & Co., 361 Broadway, New York. Branch Office, 625 F St., Washington, D. C.

IT GOES BANG! A perfect burglar alarm and window fastener. Never out of order.

PALMER Stationary and Marine Gasoline Engines and Launches, Motor Wagon Engines, Pumping Engines.

PROPOSALS.

OFFICE OF THE ENGINEER, THIRD LIGHT-HOUSE DISTRICT, Tompkinsville, N. Y. Sealed proposals will be received at this office until 12 o'clock noon.

ICE MACHINES, Corliss Engines, Brewers' and Bottlers' Machinery. THE VILTER MFG. CO., 899 Clinton Street, Milwaukee, Wis.

STEEL TYPEWORK. TYPE WHEELS, MODELS & EXPERIMENTAL WORK, SMALL MACHINES, NOVELTIES & ETC.

MODELS & EXPERIMENTAL WORK. Inventions developed. Special Machinery.

D'AMOUR & LITLEDALÉ MACHINERY CO., 130 WORTH ST., NEW YORK. PATTERN AND MODEL MAKERS.

AUTOMOBILE TRANSMISSION. Best variable speed device. Write for catalogue.

WHO MANUFACTURES CHAIN-MACHINES which bend, cut off and connect the links automatically?

WER FABRIERT KETTENMASCHINEN, welche die Kettenglieder automatisch wickeln, durchschneiden und einhängen?

I-2 H. P. GAS ENGINE CASTINGS. Materials and Blue Prints. Write for Catalogue.

LANGUAGES by Phonograph. SPANISH and FRENCH taught by phonograph.

FOR SALE. Adjustable bicycle saddlepost. Something new. Great advantage.

A SPLENDID side line for all who travel for printing and stationery houses.

COLD! COLD! COLD! Partner wanted to construct and build machinery to extract gold from large river beds.

H. C. HINCHCLIFF, Models, Dies & Automatic Machinery. Manufacturer of SPECIAL HARDWARE & WIRE GOODS.

JUST PUBLISHED THE Progress of Invention IN THE Nineteenth Century. By EDWARD W. BYRN, A. M. LARGE OCTAVO. 480 PAGES. 300 ILLUSTRATIONS. PRICE \$3.00 BY MAIL POSTPAID TO ANY COUNTRY IN THE WORLD.

