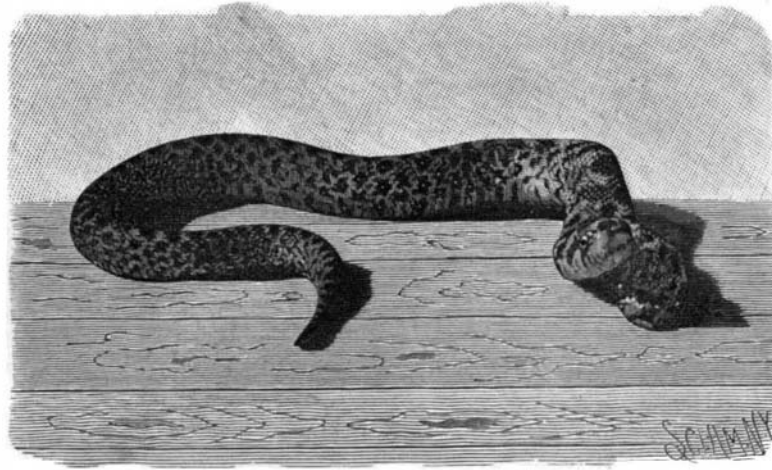


A TWO-HEADED SNAKE.

To most people the Ophidia are surrounded with mystery and horror, and this is little to be wondered at, for there is hardly anything which is more repellent than a snake. The species of this order number nearly one thousand, and all possess remarkable similarities; but the example which we show is a remarkable curiosity and is a true freak of nature. It is said to be a hog-nosed snake (*Heterodon simus*) and has two heads each perfect in itself, and apparently each head is endowed with separate will power. It came from Central America and is in the possession of Mr. E. C. Fischer, of New York City. It is a young snake, being only four months old, it is not quite a foot long, but it is said that this variety of snake frequently attains a length of several feet when mature. It is of a brownish green color, which seems to change somewhat at times. The eyes are particularly bright and the snake seems to be endowed with considerable intelligence, as it appears to know Mr. Fischer, and will come over to the side of the box nearest him and the little tongues are protruded as a token of joy. The curious little creature is very lively for a snake kept in captivity, and is preserved in a glass box. The photographer of the SCIENTIFIC AMERICAN spent three hours in trying to photograph it. The snake likes to lie in the sun, but turns its head away from the light.

with full plans and particulars in the May issue of 1896. The house shown in the upper views was designed by the owner, James F. Leib, Esq. The views show a front piazza, with four stone piers to height of rail, forming base for square columns supporting the overhanging gable roof, which is relieved by the wide, hipped-roof dormers in front and rear. Underpinning and piers, of local stone; structure above sheathed, papered, clapboarded, and painted yellow at first



A TWO-HEADED SNAKE.

It was laid on flannel on a table in a good light and the camera was pointed at it. The little animal wriggled away. The table was turned around with the same result, and at last an instantaneous photograph was taken of it.

Both of the heads eat at once, the diet being milk, raw meat, and blood. It is found wise to feed both heads at the same time, for, strange to say, the two heads appear jealous of each other and sometimes fight. At other times the heads play together. The snake has great strength for its size and twists a stick around and can be readily raised by it.

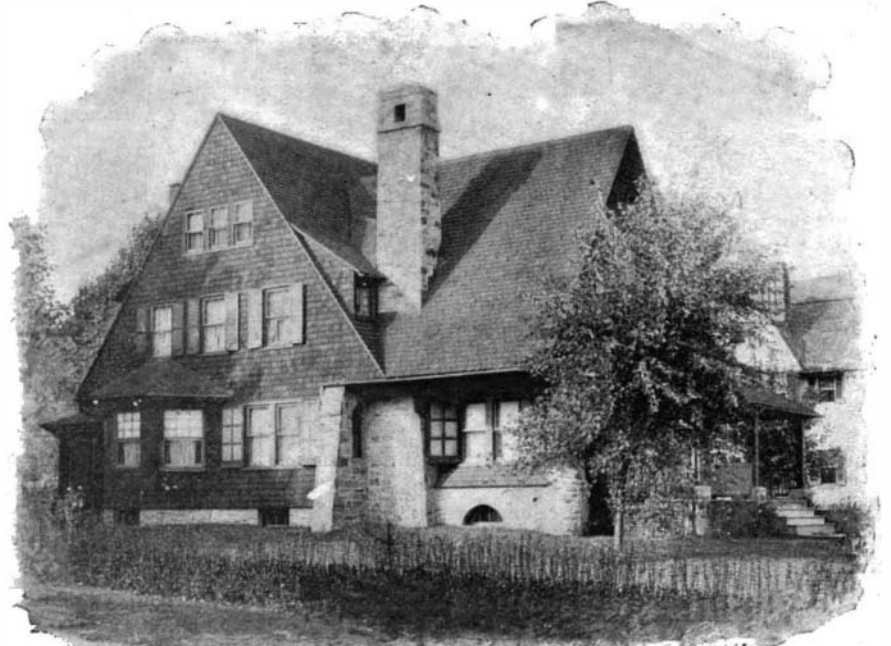
SOME INEXPENSIVE COUNTRY HOUSES.

We publish in the accompanying engravings views of two inexpensive country houses which have been recently erected at Roland Park, near Baltimore, Md. These engravings are prepared from photographs specially taken for the BUILDING EDITION of the SCIENTIFIC AMERICAN, and published in that magazine

story; gable shingled and stained brown; roof also shingled, and left to weather; chimneys of brick, capped with stone. Dimensions: Front, 29 ft., exclusive of entrance porch; side, 40 ft., including piazza. Height: Cellar, 6 ft. 6 in.; first story, 9 ft.; second, 8 ft. 6 in.; attic, 7 ft. The entrance porch at side, with door opening on hall, in white pine, grained oak; staircase has wide newels, with paneled faces and flat cap; turned balusters on straight string; sliding door opening to music room, in pine, painted white, with angle fireplace, faced with light gray mottled tiles; mantel, also painted, has ornamental top and beveled mirror. Library connects by sliding doors; similar fireplace, with tiles of light mottled brown, mantel above, mirror backed. This room also has glazed door to front piazza, and really serves the purpose of reception hall or living room. Dining room has fireplace, also tiled; upper mantel shelf is supported by two long fluted columns; two shorter ones support the side shelves; beveled mirror head. Passage, with pantry at side, leads to

kitchen. A wide, circular arch, with large, central electric light globe, forms interesting feature in second floor hall. This floor is divided off into four chambers of good size, two with alcoves (circular plaster arches), and all with large closets; also bathroom, wainscoted in yellow pine, natural; all plumbing being exposed and nickel plated, tub of enameled iron, basin of marble; all best make; two rooms in attic; house is trimmed throughout in white pine, grained or painted, lighted by electricity and gas, heated by hot air, and cost complete \$3,500; cellar, cemented, contains heater, fuel storage, etc.

The lower engravings represent the residence of Mrs. H. B. Rosston, built by the Roland Park Company. W. L. Price architect, Philadelphia, Pa. The views show a design appropriate to its surroundings, the broad treatment of roof and gable ends being the principal features of the design. There is a wide, well shaded porch, with square columns on stone piers, supporting the high hipped and overhanging gable roofs. Underpinning, portion of first story, and main chimney of rock faced local stone, laid with joints well broken and with good color effect; other chimneys of brick, stone capped. All exterior framework sheathed, covered with building paper, shingled, and stained deep red; roof similarly treated. Dimensions: Front, 31 ft. 3 in., exclusive of bay; side, 62 ft. 7 in., not including porch projections. Heights: Cellar, 7 ft. 6 in.; first story, 9 ft.; second story, 8 ft. 6 in.; attic, 7 ft. 6 in. The reception hall, running full width of house and finished in red oak, has wide arched opening, forming separating feature from staircase portion, fireplace centered, faced with tiles, mantel over. Wide staircase of easy rise, turned balusters and plain square newel, leaded landing window; walls papered. Parlor also has tiled (angle) fireplace, mantel of neat design above, connects by sliding doors. Dining room, finished natural, has double sliding door opening, bay full width, and connects with kitchen, containing usual fixtures, through pantry, provided with dressers, sink, etc. Laundry in rear has three wash trays. Second floor divided into four chambers, the connecting one intended for dressing room, and bathroom, with plumbing exposed and approved fixtures. Large linen closet provided with shelves, etc. Attic, servants' rooms and storage space. Cellar cemented, provided with heating apparatus, fuel storage space, etc.



SOME INEXPENSIVE COUNTRY HOUSES.