

THE CALIFORNIA MIDWINTER FAIR.

California is the wonderland of America, with its glorious climate, its remarkable fertility, its Yosemite Valley, and notable mountains. When the Eastern States are wrapped in snow the inhabitants of favored California are in the midst of a semi-tropical garden enjoying all the delights of spring and early summer. This attracts large numbers of people from all parts of the world, who visit California for health and pleasure. When Mr. M. H. De Young, vice-president of the Columbian Commission, proposed that a midwinter fair be held on the Pacific coast, the idea was everywhere received with enthusiasm. The subject was first broached at a meeting held in the California Club, of Chicago, on May 31, 1893. Notwithstanding the financial depression of the country, ground was broken on the 24th of August last, and five months afterward, on January 27, 1894, the fair was ready and opened to the public.

Golden Gate Park, San Francisco, is in reality a sea-girt garden, filled with the choicest blooms of all lands. This park possesses an individuality of its own which renders it unique among the pleasure grounds of the world. The park is laid out in a highly artistic manner, and the profusion of palms suggests Bordighera, Nice, or San Remo. The Midwinter Fair occupies about 160 acres of the park.

We present several views of the grounds and the buildings. In a subsequent issue we shall give a view of the Manufactures and Liberal Arts building.

Our bird's eye view shows the dome of the Horticultural and Agricultural building in front at the left; behind rises the Manufactures and Liberal Arts building, flanked by the electric tower, 250 feet in height. To the right rises the prominent collection of domes and minarets which covers the Administration building; at the rear of this is the Firth wheel and the Mechanic Arts building. The other buildings are the Fine and Decorative Arts building, Festival Hall, buildings for concessions, etc.

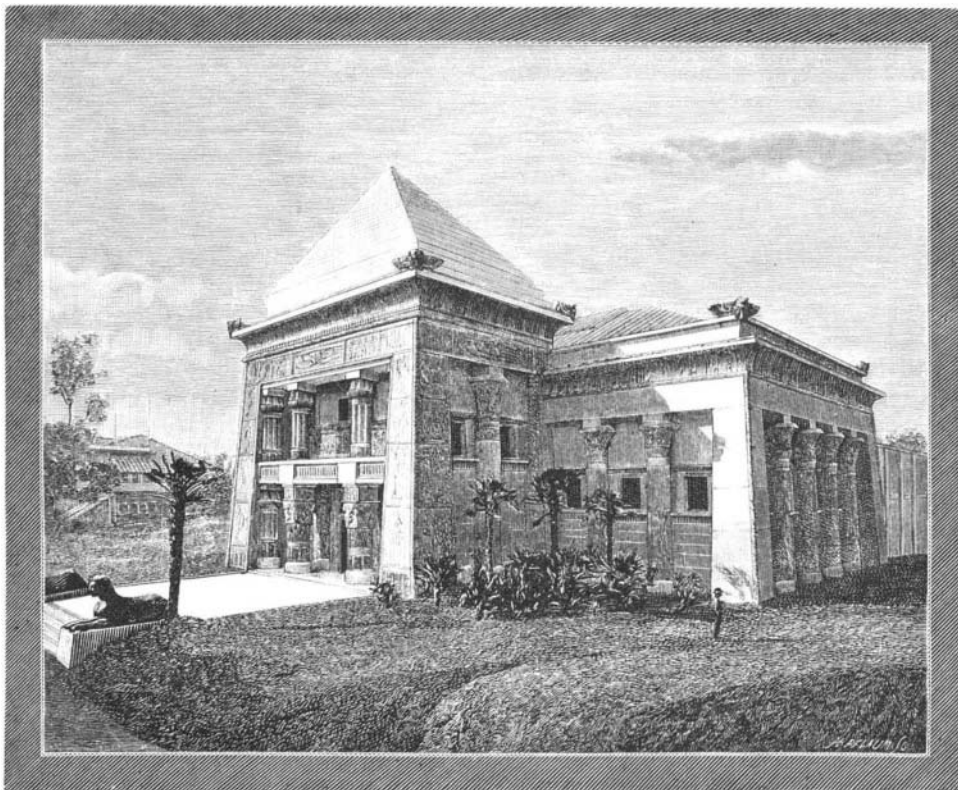
The Administration building is situated on the southern side of the Grand Court, and its oriental architecture and coloring comports admirably with the luxuriance of the surrounding vegetation. This building was designed by A. Page Brown, and the architectural style may be said to be a combination of central Indian and Siamese. The main structure rises from a terrace, and the leading feature of the building is the richly ornamented dome, which is 135 feet in height and 50 feet in diameter. The total floor area of the building is 16,800 feet. This dome is brilliantly illuminated at night.

The Art building was designed by Mr. C. C. McDougal. It is a modern adaptation of Egyptian architecture, and the coloring is subdued. Like all the other buildings, staff is freely used. The vestibule is very effective. It is 22 feet square and 63 feet high. The interior measurements show that the galleries are 58 feet long and 38 feet wide. Annexes give wall space, so that the available wall space is 2,000 running feet. The structure is fireproof. The approach is of artificial stone, 40 feet wide, flanked by immense sphinxes. The third

edifice which we illustrate is the Mechanic Arts building, with allegorical fountain in the foreground. The building was designed by Mr. Edward R. Swain. It is built in the East Indian style. The length of the building is 330 feet and the width is 160

feet, and the pinnacles rise to the height of 120 feet.

The oriental style of architecture and brilliant coloring gives a suggestion of age which is very pleasing. The total expense of the buildings has been about \$1,500,000.



THE CALIFORNIA MIDWINTER FAIR—THE FINE ARTS BUILDING.

feet. The total floor space available for exhibitors is 37,041 square feet. It has also an annex measuring 249 by 45 feet, containing boilers and engines. In the central part of the main floor are two great tanks 30 feet long and 25 feet wide. Around them are gathered the exhibit of steam and other pumps. The exterior of the building is elaborately ornamented. The cresting of the main body of the building is 42 feet above the

thus afforded for the efficient maintenance of the wires. There is only one station, which is at Mendoza, but Buenos Ayres and Valparaiso work direct with each other. The opening of this system is of great importance to the West Coast of America Telegraph Company, as it places their cables in direct connection with those of the Western and Brazilian, the Brazilian Submarine, and the Eastern Telegraph Companies,

affording a continuous chain of telegraphs in British hands from England and the Continent to the Pacific coast of South America. The construction of this line was rendered necessary to enable the English Submarine Telegraph Companies to transmit with great rapidity the important traffic to and from the west coast of South America, where it is dealt with by the cable of the West Coast of America Company.

Dirt in Milk.

The author puts 1 liter of milk from each dealer into a flask closed with a plug of wadding. On its arrival in the laboratory it is transferred to a measuring glass, covered with a piece of filter paper and a glass plate, and allowed to stand for two hours. The milk is then carefully decanted off from the sediment down to about 30 c. c., the residue is made up to 1 liter with pure water, and again allowed to subside for one hour. It is then again drawn off, repeating this proceeding until all the dirt is left in pure water, which is then decanted off to about 100 or 150 c. c. The dirt is then collected in a tared filter, dried, and weighed. The dirt in the milk may be calculated as five times the dry residue. One liter of market milk was found to contain 3 m. grammes dirt at Wurzburg, 38 at Leipzig, 9 at Munich, 10.3 at Berlin, and 14.92 at Halle. The richness of the milk in microphytes was surprising. — *Leo. Schulz, Archiv fur Hygiene.*



THE CALIFORNIA MIDWINTER FAIR—THE ADMINISTRATION BUILDING.

SCIENTIFIC AMERICAN

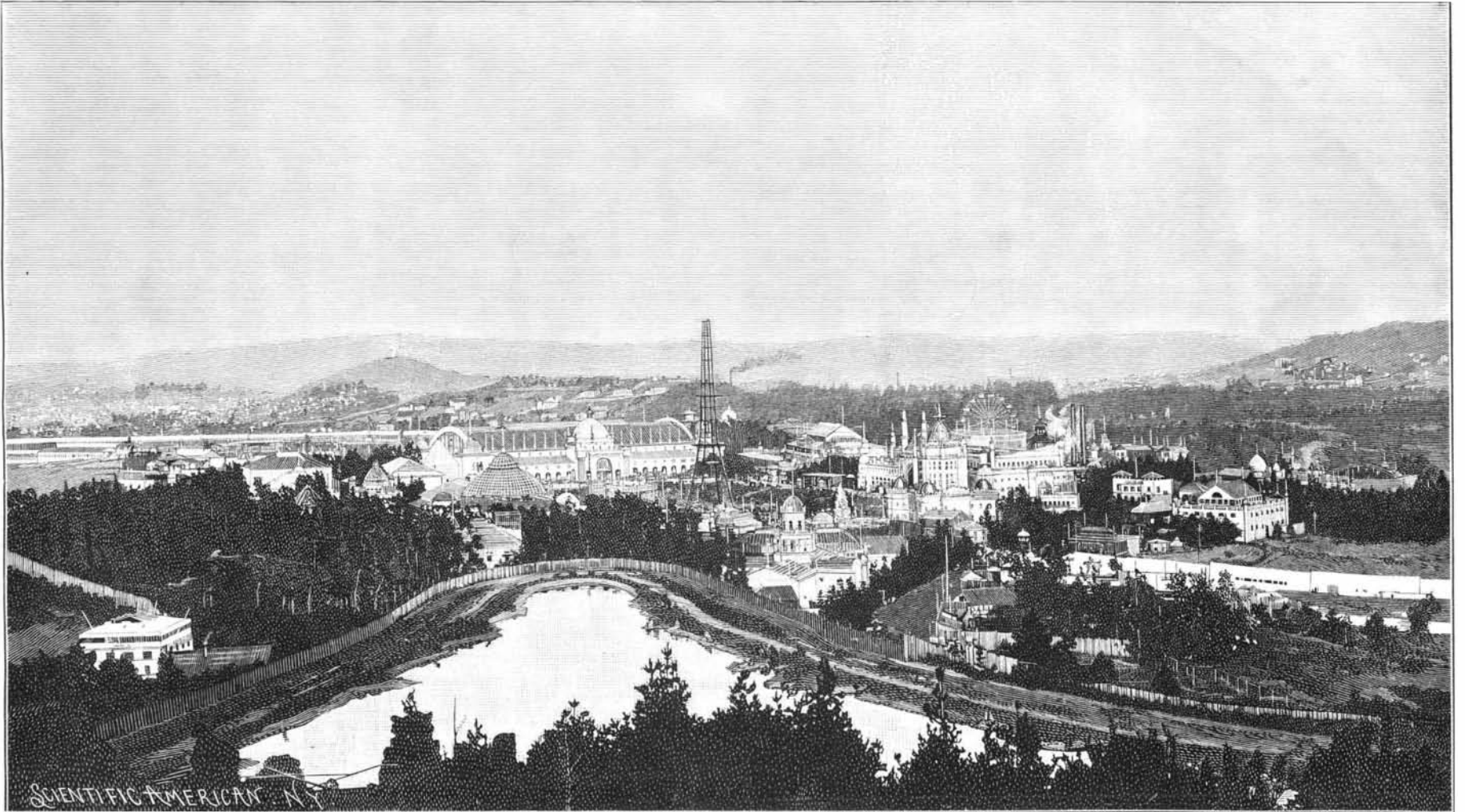
[Entered at the Post Office of New York, N. Y., as Second Class matter. Copyrighted, 1894, by Munn & Co.]

A WEEKLY JOURNAL OF PRACTICAL INFORMATION, ART, SCIENCE, MECHANICS, CHEMISTRY, AND MANUFACTURES.

Vol. LXX.—No. 15.
ESTABLISHED 1845.

NEW YORK, APRIL 14, 1894.

\$3.00 A YEAR.
WEEKLY.



THE CALIFORNIA MIDWINTER FAIR—A BIRD'S EYE VIEW.



THE CALIFORNIA MIDWINTER FAIR—THE MECHANIC ARTS BUILDING.—[See page 232.]