

Advertisements.

ORDINARY RATES.

Inside Page, each insertion, - 75 cents a line
Back Page, each insertion, - \$1.00 a line

The above are charges per agate line—about eight words per line. This notice shows the width of the line, and is set in agate type.



OVERMAN WHEEL CO. BOSTON, WASHINGTON, DENVER, SAN FRANCISCO. A. G. SPALDING & BROS., Special Agents, CHICAGO, NEW YORK, PHILADELPHIA.

GOLD FORGED PRODUCT.

Fluted Tire Bolt

Patented Nov. 11, 1890; Oct. 20, 1891.



is stiffer and stronger than a common bolt. The fluted shank prevents the bolt from turning in the rim and tire.

MACHINE SCREWS, STOVE BOLTS, LOCK CAP SCREWS, SIDE KNOB SCREWS, THREADED WIRES.

AMERICAN SCREW COMPANY, PROVIDENCE, R. I.

Motor of 19th Century. Can be used any place, to do any work, and by anyone. No Boiler! No Fire! No Steam! No Ashes! No Gauges! No Engineer! A perfectly safe Motor for all places and purposes.

ASTRONOMY. Poole Bros. Celestial Planisphere and Celestial Handbook just published. For descriptive circular address: POOLE BROS., CHICAGO, ILL.

For Power Produced, our GAS ENGINE will be found to be the Most Economical of any Engine made, for running Fans, Elevators, Printing Presses, Ice Cream Freezers, Meat Choppers and Grinders, or any Machinery. Chicago Water Motor & Fan Co. 99 Lake St., Chicago, Ill.

Your Wife's Watch

ought to be equal to yours; at least.

Her minutes cost her more than yours and bring her less. You see that at dinner time, at supper time, at breakfast time, and—well, all the time. Haven't you learned her needs? She needs a watch that she can risk anywhere; accurate, stylish and genuine—and not expensive: the new, quick-winding Waterbury. Handsome as a hundred dollar watch, though it costs only \$15 down to \$4.

It is cased in gold, filled, coin-silver, etc. It is stem-winding and setting, a jeweled movement. It may save a costlier one. Every jeweler keeps this watch in all styles.

PATENTS!

MESSRS. MUNN & CO., in connection with the publication of the SCIENTIFIC AMERICAN, continue to examine improvements, and to act as Solicitors of Patents for Inventors. In this line of business they have had forty-five years' experience, and now have unequalled facilities for the preparation of Patent Drawings, Specifications, and the prosecution of Applications for Patents in the United States, Canada, and Foreign Countries.



Prevents

Solves with great rapidity and absolute accuracy all arithmetical problems.

Saves

60% of time in doing the work.

And all the time looking for errors.

WRITE FOR PAMPHLET.

FELT & TARRANT MFG. CO., 52-56 Illinois St., Chicago.

KODAK FILMS.

Our New Films are giving perfect satisfaction. They are highly sensitive, and repeated tests show that they retain this sensitiveness as well as glass plates. No other films are so free from imperfections; none so uniform; none so reliable. Our film doesn't frill.

Eastman Kodak Co., Rochester, N. Y.

H.W. JOHNS' ASBESTOS STEAM PACKING

Boiler Coverings, Millboard, Roofing, Building Felt, Liquid Paints, Etc. DESCRIPTIVE PRICE LIST AND SAMPLES SENT FREE. H. W. JOHNS MFG. CO., 87 Maiden Lane, N. Y.



The Smith Premier Typewriter

Embodies the most Progressive Mechanical Principles. All the Essential Features Greatly Perfected. Perfect and Permanent Alignment. Easiest Running, and Nearly Silent. All type cleaned in Ten Seconds without Soiling the Hands. The Smith Premier Typewriter Co., Syracuse, N. Y., U. S. A. We have 30 branch offices in the principal cities throughout the United States.

IN ONE MINUTE IT WILL CONVINCED YOU OF OUR ABILITY TO SUPPLY TOILET PAPER FOR LESS MONEY THAN IT CAN BE OBTAINED ELSEWHERE. A.P.W. PAPER CO. ALBANY, N.Y.

"LUNKENHEIMER" Goods have been imitated, but never equalled. They are beyond comparison. Why? Because they are thoroughly reliable, practical, durable, and are never misrepresented.

AGENTS WANTED FOR FINE TOOLS IN EVERY SHOP. G.H. BESLY & CO. CHICAGO, ILL. U.S.A.

PATENT JACKET KETTLES. Plain or Porcelain Lined. Tested to 100 lb. pressure. Send for Lists. HARRON & AVERY CO., S. Front & Reed Streets, Philadelphia, Pa.

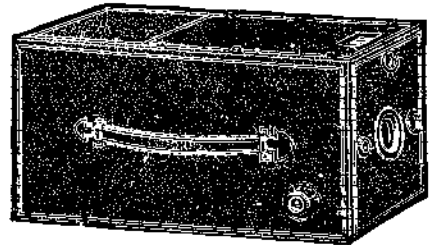
FINEST FINE GRINDER KNOWN. NOTHING TOO HARD GRINDS EVERYTHING. VERTICAL ROCK EMERY MILL. 3 Tons per Hour. STURTEVANT MILL CO. Boston, Mass.

THE Monarch KING OF THEM ALL. MONARCH CYCLE CO. Lake and Halstead Sts., CHICAGO, I. S. A.

AIR SHIPS, Hydrogen Generators, Aerial Apparatus, and Patent Gas Proof Fabrics. Prof. Carl E. Myers, Balloon Farm, Frankfort, N. Y.

SEND FOR OUR CATALOGUE! FIBRE SHEETS, RODS, TUBING, WASHERS. MADE HARD OR SOFT. A HORN LIKE MATERIAL. LIGHT AND STRONG FOR GENERAL USE IN THE MACHINE SHOP. CAN BE WORKED LIKE A METAL. DELAWARE HARD FIBRE CO., WILMINGTON DEL.

THE PREMIER CAMERA



IS THE BEST IN MARKET. Simple of Manipulation. Plates or Films are used. The Shutter is always set. PRICE \$18.00.

Send for Catalogue and copy of Modern Photography. WE MAKE ALL KINDS OF CAMERAS.

ROCHESTER OPTICAL COMPANY, 14 S. Water St., ROCHESTER, N. Y.

STEEL vs. STEED. There's more economy in steel than horse flesh—no oats, no stable, no stableman—the world's a-wheeling—saving money, gaining healthfulness, enjoying the best of recreation. The COLUMBIA BICYCLE is made for those who appreciate standard quality backed by excellence.

THE FOX SAFETY RAZOR.

(U. S. Patent 494,155, October 11, 1892.) Is the finest and most practical in the world. Every man his own barber. Makes shaving a luxury. No danger of cutting; adjustable blade; silver plated frames. Price \$2 by mail, free. E. LOTHAR SCHMITZ, 92 & 94 Reade St., New York.

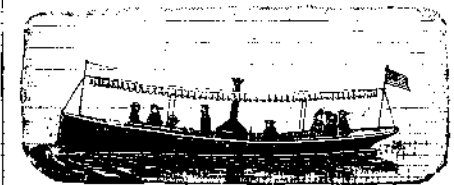
The American Bell Telephone Company 125 MILK ST., BOSTON, MASS.

This Company owns the Letters Patent No. 186,787, granted to Alexander Graham Bell, January 30, 1877, the scope of which has been defined by the Supreme Court of the United States in the following terms:

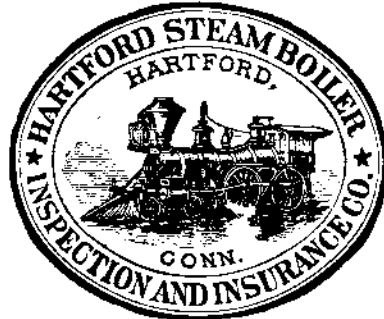
"The patent itself is for the mechanical structure of an electric telephone to be used to produce the electrical action on which the first patent rests. The third claim is for the use in such instruments of a diaphragm, made of a plate of iron or steel, or other material capable of inductive action; the fifth, of a permanent magnet constructed as described, with a coil upon the end or ends nearest the plate; the sixth, of a sounding box as described; the seventh, of a speaking or hearing tube as described for conveying the sounds; and the eighth, of a permanent magnet and plate combined. The claim is not for these several things in and of themselves, but for an electric telephone in the construction of which these things or any of them are used."

This Company also owns Letters Patent No. 463,569, granted to Emile Berliner, November 17, 1891, for a Combined Telegraph and Telephone; and controls Letters Patent No. 474,231, granted to Thomas A. Edison, May 3, 1892, for a Speaking Telegraph, which cover fundamental inventions and embrace all forms of microphone transmitters and of carbon telephones.

A GENTLEMAN'S LAUNCH



YOUR OWN ENGINEER. Launches 19 to 60 feet in length, with automatic machinery. No Smoke. No Engineer. No Danger. No Dirt. PADDLE YOUR OWN CANOE. Canoes, Family Row and Sail Boats. Fishing and Hunting Boats. Manufactured by THOMAS KANE & CO., Chicago, Ill. Send for catalogue specifying line desired.



ELECTRICAL * MINING * MACHINERY

Electric Mine Locomotives, Electric Drills, Electric Coal Cutters, Electric Pumps, Electric Hoists.

WE ARE THE ONLY HOUSE IN THIS COUNTRY FURNISHING ELECTRICAL MINING MACHINERY

GENERAL ELECTRIC COMPANY,

DISTRICT OFFICES:

- 44 Broad Street, New York. 173 and 175 Adams Street, Chicago, Ill. Fifth and Race Streets, Cincinnati, O. Equitable Building, Atlanta, Ga. 15 First Street, San Francisco, Cal. 620 Atlantic Avenue, Boston, Mass. 509 Arch Street, Philadelphia, Pa. 401-407 Sibley Street, St. Paul, Minn. 1333 F Street, N.W., Washington, D. C. Masonic Temple, Denver, Colo. All business outside the U. S. transacted by Thomson-Houston International Electric Co., 44 Broad St., New York

RIEDLER ENGINES AND PUMPING ARE POSITIVELY BETTER THAN ANY OTHERS UPON THE MARKET. AIR COMPRESSORS FOR EVIDENCE OF THIS FACT WRITE FOR PARTICULARS TO FRASER & CHALMERS 133 FULTON ST. W. CHICAGO, ILL.

PRINTING INKS.

The SCIENTIFIC AMERICAN is printed with CHAS. ENEU JOHNSON & CO.'S INK, Tenth and Lombard Sts., Philadelphia, and 47 Rose St., opp. Duane, New York