

**THE GREAT EXPOSITION ENTRANCES TO THE FISHERIES AND THE MINING BUILDINGS.**

The several entrances to the Fisheries Building at the World's Columbian Exposition are of the design as shown in our upper illustration; but the ornamental work is carried out in such detail and is so elaborate as to be quite impossible of reproduction on a small scale. Each piece of ornamentation is complete and distinct in itself, and is a study in the lower forms of life. Fishes, frogs, eels, lizards, and other creatures constitute the conception of each piece of ornamentation,

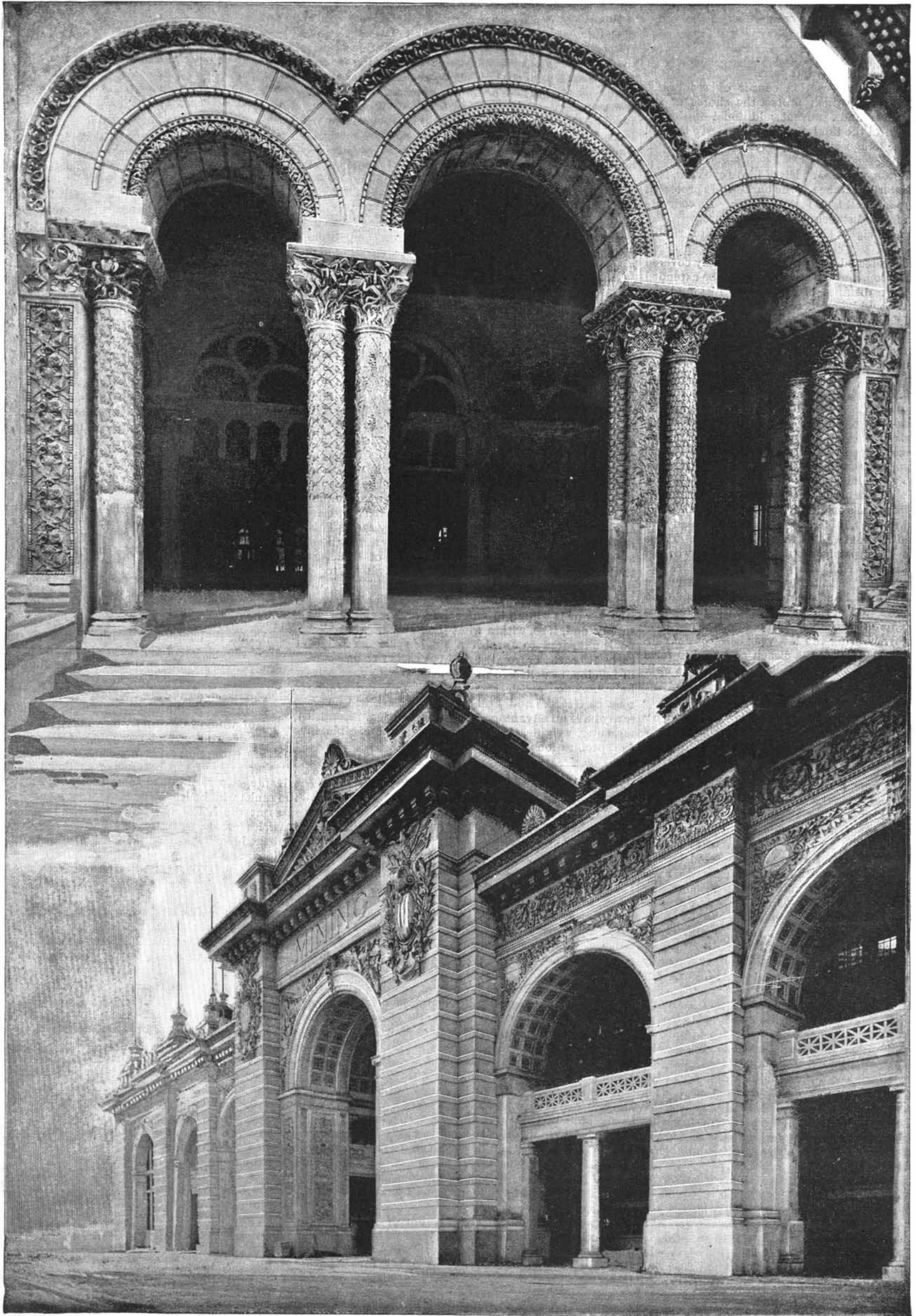
with cat-tails, flags, and other foliated designs interwoven for effective completeness.

The lower plate shows the south entrance to the Mining Building. This entrance is nearly opposite the Administration Building. This building is painted with a light, mild yellowish effect. Besides the frieze there is but little ornamentation on the south face or other parts of the building. Directly over the main entrance-way arch is the word "Mining" in plain Gothic letters. At either side is the shield of the United States in strong relief, with the words "In God we trust" en-

graved beneath. Figures symbolic of mining constitute the relief in the spandrel on each side of the arch. The north entrance is the same as this, except that a flight of half a dozen steps leads up to it.

**Official Tests for New Magazine Rifles.**

It will be seen by the advertisement in another column that a board of officers has been ordered to be assembled at the Springfield (Mass.) armory. Arms to be tested must be presented to the board before March 31.



**THE WORLD'S COLUMBIAN EXPOSITION—ENTRANCES TO THE FISHERIES AND THE MINING BUILDINGS.**