

THE NEW BOATS OF THE HOBOKEN FERRY COMPANY, NEW YORK.

Two new boats have lately been constructed for the Hoboken Ferry Company which are noticeable for the improvements and new arrangements of parts which greatly add to the speed and to the accommodations for passengers. Their names are the Bremen and the Hamburg. They ply on the Hudson River, between New York and Hoboken, on the opposite shore. At Hoboken the docks of the famous German steamships are located, hence the names of these new ferry boats. They are sister vessels, and a description of one will answer for the other. We are indebted for the following particulars to a letter given in *Engineering* by a correspondent of that journal.

The Bremen is a steel hull, double deck, screw ferry boat, and is fitted up in a tasteful and effective manner. Another of the same type is called the Hamburg. The hulls of the two boats were built

by T. S. Marvel & Co., Newburg, N. Y. They are of steel. The length of each over all is 222 feet; length on water line, 218 feet 6 inches; breadth over all, 62 feet; breadth on water line, 35 feet; draught, light, 10 feet 6 inches; draught, loaded, about 11 feet; depth of hold, 17 feet. These boats are double decked. The upper saloon is 97 feet long by 36 feet wide, and 10 feet high. It has a promenade hood extending all around it, butting against the pilot houses, giving the whole a pleasing appearance.

The lower saloons are 157 feet long, with an average width of 15 feet; height, 13 feet. A double stairway

leads from each lower saloon to the upper one. The total seating capacity in each boat will accommodate about 450 persons. Her engines are the work of W. & A. Fletcher & Co. The engines are two in number and compound.

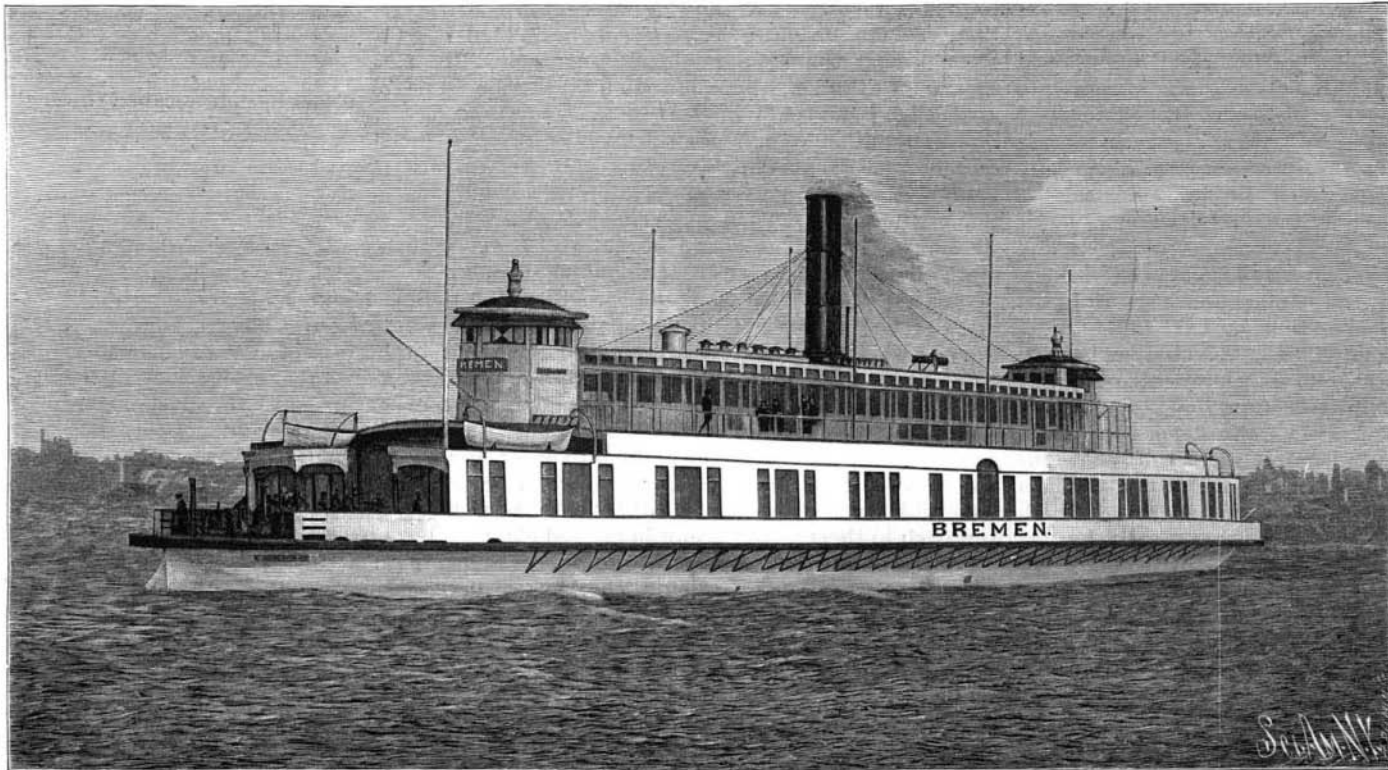
The high pressure cylinders are 20 inches in diameter; low pressure cylinders, 36 inches in diameter; stroke, 28 inches. The initial steam pressure in the main

with compound steam cylinders. They are of the following dimensions: High pressure cylinder, 7 inches in diameter; low pressure cylinder, 14 inches in diameter; stroke, 16 inches. These work two single-acting vertical air pumps 17½ inches in diameter and 14 inches in stroke, and one double-acting horizontal circulating water cylinder, 17 inches in diameter, 16 inch stroke. The seats for the salt water valves in the circulating

pump are formed in solid composition plates.

The vessel is steered by Williams' steam steering gear. The Bremen and her sister boat, the Hamburg, are practically deck truss bridges from fantail beam to fantail beam, the hull of the boat being built around this truss, the circular ends being merely overhangs to connect the boat with the ferry bridges.

The Bremen has exerted 1,450 horse power in the short trip across the river, making a speed of 14 miles per hour against a strong wind and tide. Probably there are no finer river ferry boats in the



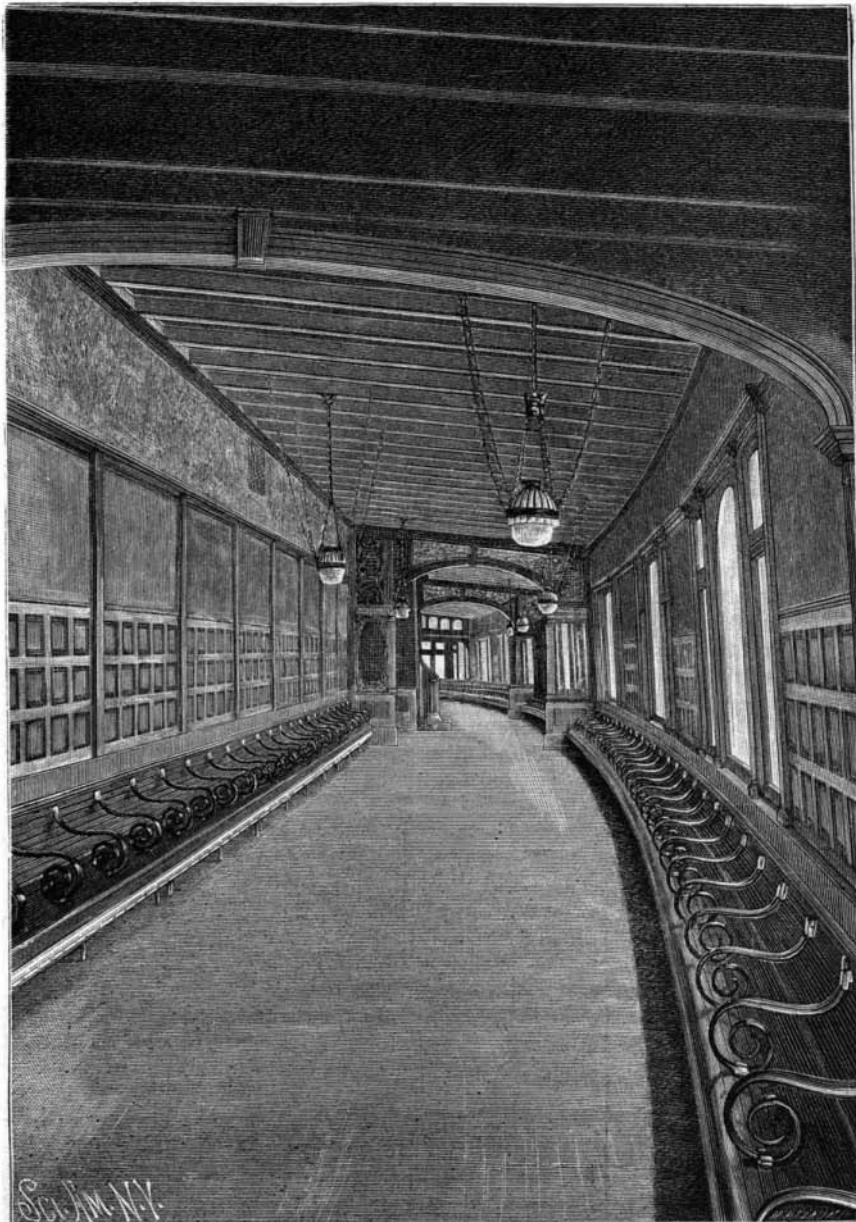
GENERAL VIEW OF THE FERRY BOAT BREMEN.

engines will be 125 pounds, furnished from two horizontal boilers, 9 feet 1 inch in diameter, and 21 feet long. Each has two corrugated furnaces, 44 inches in diameter. Total grate surface 100 square feet. The boilers were tested to 250 pounds hydrostatic pressure. The diameter of the crankshaft is 9½ inches. The cranks in each engine are set opposite to each other, and when the engines are coupled, the center line of cranks in one engine will be perpendicular to that of the other, so that the cranks practically stand at 90° apart. Each boat is provided with an independent air and circulating pumping engine of the Blake system,

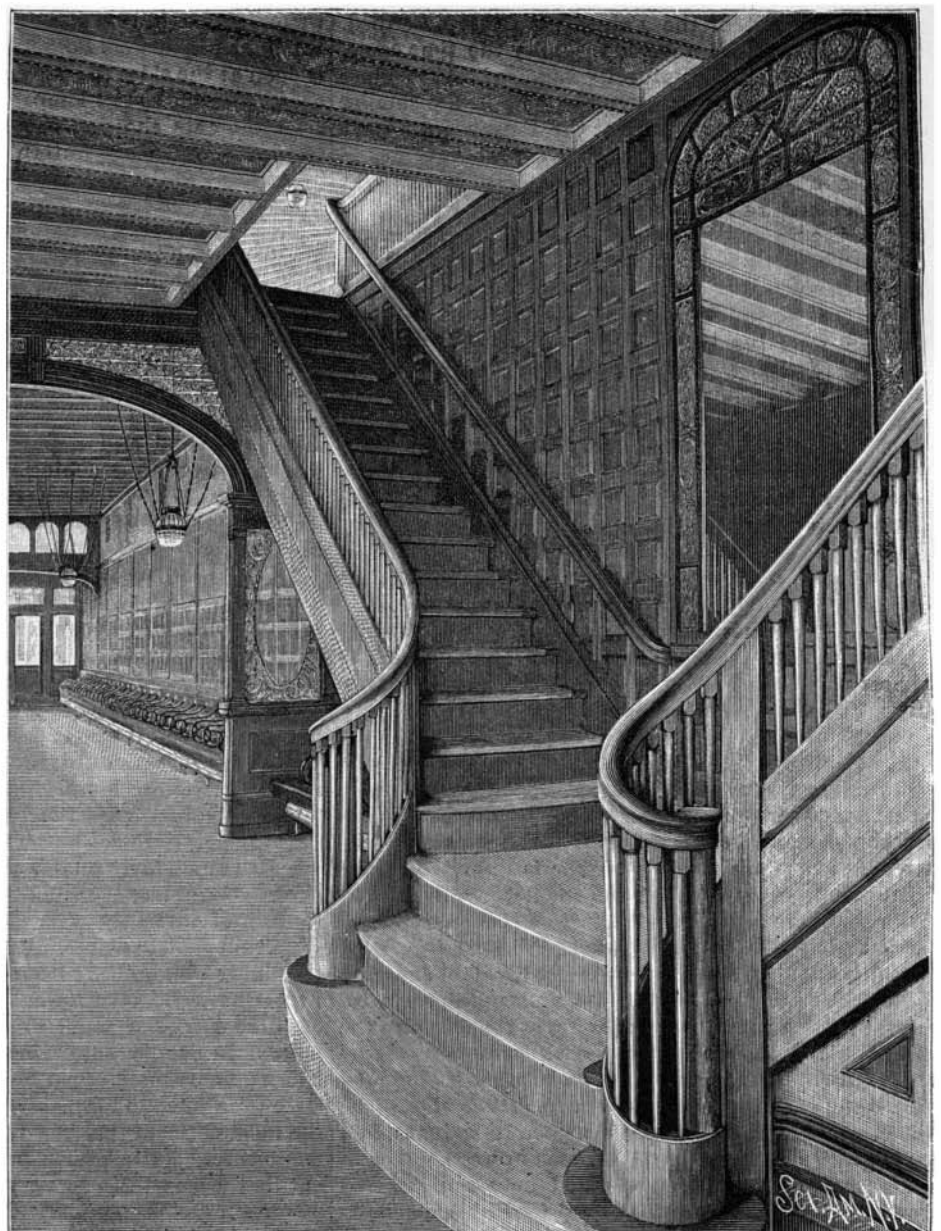
world than the two vessels here illustrated.

Marmont B. Edson.

Marmont B. Edson died in Brooklyn, N. Y., on the 2d of May. He was born in Otsego County, N. Y., seventy-nine years ago, and was buried from old Trinity church, New York City. His golden wedding was celebrated on October 7, 1891. Mr. Edson was of an inventive turn, and was chiefly known in connection with the pressure recording gauge which bears his name. He was a man of sterling integrity, of broad mind and warm heart.



THE FERRY BOAT BREMEN—LOWER SALOON.



THE FERRY BOAT BREMEN—STAIRWAY BETWEEN UPPER AND LOWER SALOONS.