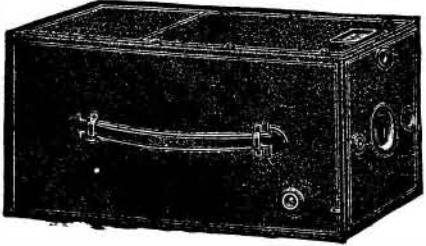


Advertisements.

Inside Page, each insertion - - 75 cents a line
Back Page, each insertion - - - \$1.00 a line

The above are charges per agate line—about eight words per line. This notice shows the width of the line, and is set in agate type. Engravings may head advertisements at the same rate per agate line, by measurement, as the letter press. Advertisements must be received at Publication Office as early as Thursday morning to appear in the following week's issue.

THE PREMIER CAMERA



IS THE BEST IN MARKET. Simple of Manipulation. Plates or Films are used. The Shutter is always set. PRICE \$18.00. Send for Catalogue and copy of Modern Photography. WE MAKE ALL KINDS OF CAMERAS. ROCHESTER OPTICAL COMPANY, 14 S. Water St., ROCHESTER, N. Y.

THE HANDY Gate Valve for low pressure, steam, water, oils, etc.—being simple, more compact, better suited for the purpose and much lower in price than wheel-handled straightway valves, is rapidly superseding these and stop cocks, where pressure is below 75 pounds. Absolutely tight. Lever remains fixed at any opening, is detachable and indicates degree of opening. Sizes 1/2 in. to 6 in. Investigate. Lukenheimer Brass Mfg. Co., Cin., O.

WORKING MODELS and Experimental Machinery, metal or wood, made to order by MASON & RAUCH, successors to J. F. Werner, 47 & 49 Centre Street, New York.

VICTORS MAKE THE RACE. OVERMAN WHEEL CO. CHICOPEE FALLS MASS. BOSTON WASHINGTON DENVER SAN FRANCISCO

The Remington Standard Typewriter



presents the practical results achieved by the best inventive and mechanical skill, aided by capital and the experience gained during the FIFTEEN YEARS in which it has been the STANDARD WRITING-MACHINE OF THE WORLD SEND FOR ILLUSTRATED CATALOGUE. Wyckoff, Seamans & Benedict, 327 BROADWAY, NEW YORK.

PATENTS! MESSRS. MUNN & CO., in connection with the publication of the SCIENTIFIC AMERICAN, continue to examine improvements, and to act as Solicitors of Patents for Inventors. In this line of business they have had forty-five years' experience, and now have unequalled facilities for the preparation of Patent Drawings, Specifications, and the prosecution of Applications for Patents in the United States, Canada, and Foreign Countries. MUNN & CO. also attend to the preparation of Caveats, Copyrights for Books, Labels, Reissues, Assignments, and Reports on Infringements of Patents. All business entrusted to them is done with special care and promptness, on very reasonable terms. A pamphlet sent free of charge, on application, containing full information about Patents and how to procure them; directions concerning Labels, Copyrights, Designs, Patents, Appeals, Reissues, Infringements, Assignments, Rejected Cases. Hints on the sale of Patents, etc. We also send, free of charge, a Synopsis of Foreign Patent Laws, showing the cost and method of securing Patents in all the principal countries of the world. MUNN & CO., Solicitors of Patents. 361 Broadway, New York. BRANCH OFFICES.—No. 622 and 624 F Street, Pacific Building, near 7th Street, Washington, D. C.

SIEMENS' CABLES.

SUBMARINE, * * * * * TELEGRAPH, UNDERGROUND, * * * * * TELEPHONE, INTERIOR, * * * * * ELECTRIC LIGHT.

Manufactured under authority of SIEMENS & HALSKE by THE EDISON GENERAL ELECTRIC CO. at their SCHENECTADY WORKS.

Address, Cable and Wire Department, Edison General Electric Company, EDISON BUILDING, Broad St., NEW YORK.

HARTFORD STEAM BOILER INSPECTION AND INSURANCE CO. HARTFORD CONN.

THE Motor of 19th Century Can be used Any Place, to do Any Work, and by Any One. No Boiler! No Fire! No Steam! No Ashes! No Gauges! No Engineer! A perfectly safe Motor for all places and purposes. Cost of operation about one cent an hour to each indicated horse power. For circulars, etc., address CHARTER GAS ENGINE CO., P. O. Box 148, Sterling, Ill.

TRANSMISSION OF POWER BY COMPRESSED AIR.—A valuable and interesting review of the present status of the problem of establishing compressed air plants for furnishing motive power to consumers. Contained in SCIENTIFIC AMERICAN SUPPLEMENT, No. 765. Price 10 cents. To be had at this office and from all newsdealers.

ELECTRIC POWER APPARATUS, FOR EVERY VARIETY OF MECHANICAL WORK. SAFE, SURE, RELIABLE. ESTIMATES FURNISHED. SEND FOR CATALOGUES. THOMSON-HOUSTON MOTOR CO., 620 ATLANTIC AVENUE, BOSTON, MASS.

\$85 Lovell Diamond Safety \$85 Diamond Frame, Steel Drop Forgings, Steel Tubing, Adjustable Ball Bearings to all Running Parts, including Pedals, Suspension Saddle, Finest material money can buy. Finished in enamel and nickel. Strictly high grade in every particular. No better machine made at any price. Bicycle Catalogue Free. Send six cents in stamps for our 100-page illustrated catalogue of Guns, Rifles, Revolvers, Sporting Goods of all kinds, etc. JOHN P. LOVELL ARMS CO., 147 Washington Street, BOSTON, MASS.

THE STANDARD H.W. JOHNS ASBESTOS BOILER COVERINGS H.W. JOHNS MFG. CO. 87 MAIDEN LANE, NEW YORK. PATENTED CHICAGO, PHILADELPHIA, LONDON.

JAMES WATT, AND THE APPLICATION of Science to the Mechanical Arts.—By Archibald Barr, B.Sc. A very interesting review of the life work of the celebrated engineer, with the lessons to be drawn from it by those who are entering upon the study of science with a view to its application in engineering work. Contained in SCIENTIFIC AMERICAN SUPPLEMENT, No. 744. Price 10 cents. To be had at this office and from all newsdealers.

STEEL WIRE RUBBER COVERED BELTS 3 TIMES STRONGER, MORE FLEXIBLE, MORE DURABLE AND CHEAPER THAN LEATHER AND NOT AFFECTED BY WEAR. 20 PATENTS IN U.S. & PATENTED IN EUROPEAN & ASIATIC COUNTRIES. ADDRESS THE MIDDLE WIRE BELT CO. BEAVER FALLS, PA. FOR ILLUSTRATED PRICE LIST GOOD SELLING AGENTS WANTED. NAME THIS PAPER.

DEFIANCE MACHINE WORKS. BUILDERS OF HUB, SPOKE, WHEEL, WAGON AND Carriage Machinery. DEFIANCE, Ohio, U. S. A. No. 0, HUB TURNING LATHE.

WESTINGHOUSE ENGINES OVER 6000 RUNNING DAILY IN EVERY PART OF THE WORLD. STANDARD AUTOMATIC COMPOUND JUNIOR AUTOMATIC AUTOMATIC. HUNDREDS IN CONTINUOUS USE OVER 9 YEARS. 5 TO 250 H.P. UNEQUALLED FOR FUEL DUTY AND SIMPLICITY. 35 TO 300 H.P. CHEAPER THAN A COMMON SLIDE VALVE. 5 TO 75 H.P. THE WESTINGHOUSE MACHINE COMPANY, PITTSBURGH, PA. U.S. OF A.

NEW KODAKS

"You press the button, we do the rest." Seven New Styles and Sizes ALL LOADED WITH Transparent Films. For sale by all Photo. Stock Dealers. THE EASTMAN COMPANY, ROCHESTER, N. Y. Send for Catalogue.

ARTIFICIAL INCUBATION.—A Description of the French process of raising chickens. With 7 figures. Contained in SCIENTIFIC AMERICAN SUPPLEMENT, No. 778. Price 10 cents. To be had at this office and from all newsdealers.

PATENT JACKET KETTLES Plain or Porcelain Lined. Tested to 100 lb. pressure. Send for Lists. BARROWS-SAVERY CO., S. Front & Reed Streets, Philadelphia, Pa.

COPPER TUBES SHEET BRASS BRASS WIRE

MACHINE TOOLS Engine Lathes, Planers, Shapers, Turret Lathes, etc. The Hendey Machine Co., Torrington, Conn. NICKEL-IN-THE-SLOT MACHINES. By W. L. Aughtimbaugh. An interesting description of the various coin-controlled apparatus now so common in public places; with an explanation of their mechanism. Illustrated with 14 figures. Contained in SCIENTIFIC AMERICAN SUPPLEMENT, No. 797. Price 10 cents. To be had at this office and from all newsdealers.

HUDSON'S GARDEN Hose Mender. So simple a child can use it. Write for descriptive circular. One box containing 6 Tubes, 2 Bands, 1 pair Pliers, post paid, \$1.00. Extra parts sold separately. All dealers keep them. Agents wanted. CHAS. E. HUDSON, Leominster, Mass.

HANGERS AND COUPLINGS COMPLETE STOCK OF Double Brace, Self-Oiling, Adjustable Ball and Socket Hangers, Pillow Blocks, Post Hangers, Etc. Edison Patent Compression Coupling. EDISON GENERAL ELECTRIC CO., SCHENECTADY, N. Y.

GRAVES ELEVATORS.

THE AMERICAN BELL TELEPHONE CO. 95 MILK ST., BOSTON, MASS.

This Company owns the Letters Patent granted to Alexander Graham Bell, March 7th, 1876, No. 174,465, and January 30th, 1877, No. 186,787.

The transmission of Speech by all known forms of Electric Speaking Telephones infringes the right secured to this Company by the above patents, and renders each individual user of telephones not furnished by it or its licensees responsible for such unlawful use, and all the consequences thereof, and liable to suit therefor.

BALL AUTOMATIC MADE ONLY CUT OFF ENGINE BY THE BALL ENGINE CO. ERIE PA.

GEAR CUTTING Leland, Faulconer & Norton Co., Detroit, Mich

THE SCIENTIFIC AMERICAN

ESTABLISHED 1846. The Most Popular Scientific Paper in the World Only \$3.00 a Year, Including Postage. Weekly—52 Numbers a Year.

This widely circulated and splendidly illustrated paper is published weekly. Every number contains sixteen pages of useful information and a large number of original engravings of new inventions and discoveries, representing Engineering Works, Steam Machinery, New Inventions, Novelties in Mechanics, Manufactures, Chemistry, Electricity, Telegraphy, Photography, Architecture, Agriculture, Horticulture, Natural History, etc. Complete list of patents each week.

Terms of Subscription.—One copy of the SCIENTIFIC AMERICAN will be sent for one year—52 numbers—postage prepaid, to any subscriber in the United States, Canada, or Mexico, on receipt of three dollars by the publishers; six months, \$1.50; three months, \$1.00.

Clubs.—Special rates for several names, and to Post Masters. Write for particulars. The safest way to remit is by Postal Order, Draft, or Express Money Order. Money carefully placed inside of envelopes, securely sealed, and correctly addressed, seldom goes astray, but is at the sender's risk. Address all letters and make all orders, drafts, etc., payable to MUNN & CO., 361 Broadway, New York.

THE Scientific American Supplement

This is a separate and distinct publication from THE SCIENTIFIC AMERICAN, but is uniform therewith in size, every number containing sixteen large pages full of engravings, many of which are taken from foreign papers, and accompanied with translated descriptions. THE SCIENTIFIC AMERICAN SUPPLEMENT is published weekly, and includes a very wide range of contents. It presents the most recent papers by eminent writers in all the principal departments of Science and the Useful Arts, embracing Biology, Geology, Mineralogy, Natural History, Geography, Archaeology, Astronomy, Chemistry, Electricity, Light, Heat, Mechanical Engineering, Steam and Railway Engineering, Mining, Ship Building, Marine Engineering, Photography, Technology, Manufacturing Industries, Sanitary Engineering, Agriculture, Horticulture, Domestic Economy, Biography, Medicine, etc. A vast amount of fresh and valuable information obtainable in no other publication.

The most important Engineering Works, Mechanisms, and Manufactures at home and abroad are illustrated and described in the SUPPLEMENT. Price for the SUPPLEMENT for the United States and Canada, \$5.00 a year; or one copy of the SCIENTIFIC AMERICAN and one copy of the SUPPLEMENT, both mailed for one year for \$7.00. Single copies, 10 cents. Address and remit by postal order, express money order, or check, MUNN & CO., 361 Broadway, New York, Publishers SCIENTIFIC AMERICAN.

Building Edition.

THE SCIENTIFIC AMERICAN ARCHITECTS' AND BUILDERS' EDITION is issued monthly, \$2.50 a year. Single copies, 25 cents. Forty large quarto pages, equal to about two hundred ordinary book pages; forming a large and splendid Magazine of Architecture, richly adorned with elegant plates in colors, and with other fine engravings; illustrating the most interesting examples of modern architectural construction and allied subjects.

A special feature is the presentation in each number of a variety of the latest and best plans for private residences, city and country, including those of very moderate cost as well as the more expensive. Drawings in perspective and in color are given, together with full Plans, Specifications, Sheets of Details, Estimates, etc. The elegance and cheapness of this magnificent work have won for it the Largest Circulation of any Architectural publication in the world. Sold by all newsdealers. \$2.50 a year. Remit to MUNN & CO., Publishers, 361 Broadway, New York.

PRINTING INKS

The SCIENTIFIC AMERICAN is printed with CHAS. ENEU JOHNSON & CO.'S INK, Tenth and Lombard Sts., Philadelphia, and 47 Rose St., opp. Duane, New York