

Advertisements.

Inside Page, each insertion - - 75 cents a line
Back Page, each insertion - - - \$1.00 a line

The above are charges per agate line—about eight words per line. This notice shows the width of the line, and is set in agate type. Engravings may bear advertisements at the same rate per agate line, by measurement, as the letter press. Advertisements must be received at Publication Office as early as Thursday morning to appear in the following week's issue.



POPE MFG. CO., 77 Franklin Street, BOSTON.
Branch Houses: 12 Warren St., NEW YORK, 291 Wabash Ave., CHICAGO. Factory, HARTFORD, CONN.

HANGERS AND COUPLINGS

COMPLETE STOCK OF
Double Brace, Self-Oiling, Adjustable Ball and Socket Hangers, Pillow Blocks, Post Hangers, Etc.

Edison Patent Compression Coupling.

EDISON GENERAL ELECTRIC CO., SCHENECTADY, N. Y.



THE HANDY
Gate Valve for low pressure, steam, water, oils, etc., being simple, more compact, better suited for the purpose and much lower in price than wheel-handled straightway valves, is rapidly superseding these and stop cocks, where pressure is below 75 pounds. Absolutely tight. Lever remains fixed at any opening, is detachable and indicates degree of opening. Sizes 1/2 in. to 6 in. Investigate. Lunkenheimer Brass Mfg. Co., Cin., O.



BRISTOL'S RECORDING PRESSURE GAUGE
Makes a continuous record, day and night, of Steam, Water, Gas, Air, and Liquid Pressure.
Will pay for itself by insuring Safety and Economy in the operation of your plant.
Simple in construction, accurate in operation, and low in price. Send for circular and facsimile chart.
The Bristol's Mfg. Co., Waterbury, Conn.



THE Motor of 19th Century
Can be used Any Place, to do Any Work, and by Any One. No Boiler! No Fire! No Steam! No Ashes! No Gauges! No Enrichment! A perfect safe Motor for all places and purposes. Cost of operation about one cent an hour to each indicated horse power. For circulars, etc., address
CHARTER GAS ENGINE CO., P. O. Box 148, Sterling, Ill.

BOSTON GEAR WORKS, HEADQUARTERS FOR GEARS.



ADDITION, SUBTRACTION, MULTIPLICATION, DIVISION, INTEREST, EXCHANGE, PERCENTAGE, &c.
The **COMPTOMETER** solves rapidly and accurately all arithmetical problems. Operated by keys. Saves 60 per cent of time. Entire relief from mental strain. Adapted to all commercial calculations. SEND FOR CIRCULAR.
FELT & TARRANT MFG. CO., 52-56 Illinois St., Chicago.

LEARN WATCHMAKING, Engraving, and kindred branches. Send for Prospectus. CHICAGO WATCHMAKERS' INSTITUTE, 22 Van Buren Street, CHICAGO.

SAWS and Lumbermen to SAWS
Send us their full address for a copy of Emerson's 177 Book of SAWS, new 1890 edition. We are first to introduce NATURAL GAS for heating and tempering SAWS with wonderful effect upon improving their quality and toughness, enabling us to reduce prices. Address **EMERSON, SMITH & CO. (Limited),** Beaver Falls, Pa.

PATENTS!

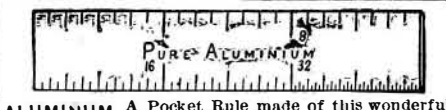
MESSRS. MUNN & CO., in connection with the publication of the SCIENTIFIC AMERICAN, continue to examine improvements, and to act as Solicitors of Patents for Inventors.
In this line of business they have had forty-five years' experience, and now have unequalled facilities for the preparation of Patent Drawings, Specifications, and the prosecution of Applications for Patents in the United States, Canada, and Foreign Countries. Messrs. Munn & Co. also attend to the preparation of Caveats, Copyrights for Books, Labels, Reissues, Assignments, Reports on Infringements of Patents. All business entrusted to them is done with special care and promptness, on very reasonable terms.
A pamphlet sent free of charge, on application, containing full information about Patents and how to procure them; directions concerning Labels, Copyrights, Designs, Patents, Appeals, Reissues, Infringements, Assignments, Rejected Cases. Hints on the sale of Patents, etc.
We also send, free of charge, a Synopsis of Foreign Patent Laws, showing the cost and method of securing Patents in all the principal countries of the world.
MUNN & CO., Solicitors of Patents,
361 Broadway, New York.
BRANCH OFFICES.—No. 622 and 624 F Street, Patent Building, near 7th Street, Washington, D. C.

ELECTRIC LOCOMOTIVES.
FOR UNDERGROUND HAULAGE.
ELECTRICAL MINING APPARATUS OF EVERY DESCRIPTION.
SEND FOR ILLUSTRATED CATALOGUE NO. 2.
THOMSON-VAN DEPOELE ELECTRIC MINING COMPANY,
620 ATLANTIC AVENUE, BOSTON, MASS.



MALLEABLE AND FINE GRAY IRON ALSO STEEL CASTINGS FROM SPECIAL PATTERNS
THOMAS DEVLIN & CO., FINE FINISHING, FINISHING AND PATTERNS
LEHIGH AVE. & AMERICAN ST. PHILA.

"THE SINTZ"
GAS AND GASOLINE ENGINES
Stationary and Marine.
Makes its own supply of gas from gasoline, and at less expense than any other engine. No boiler, coil, or Arman required. Runs with either manufactured or natural gas. Specially adapted for small boats and launches and electric light work. Circulars free. Mention this paper.
CLARK SINTZ, MFR., Springfield, Ohio.



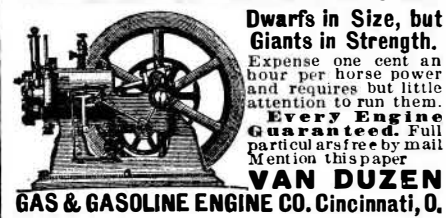
ALUMINUM A Pocket Rule made of this wonderful metal, 3 inches long, finely graduated, free by mail for 25c. T. F. Welch, 65 Sudbury St., Boston

SIEMENS' * CABLES.

SUBMARINE, * * * * * TELEGRAPH,
UNDERGROUND, * * * * * TELEPHONE,
INTERIOR, * * * * * ELECTRIC LIGHT.

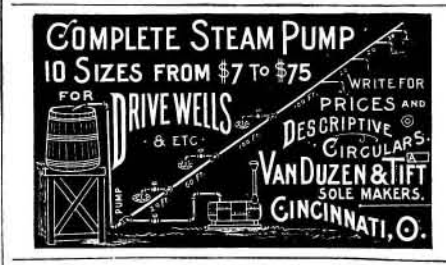
Manufactured under authority of
SIEMENS & HALSKE by THE EDISON GENERAL ELECTRIC CO.
at their SCHENECTADY WORKS.
Estimates furnished on application.
Cable and Wire Department, Edison General Electric Company,
EDISON BUILDING, Broad St., NEW YORK.

GAS and GASOLINE ENGINES



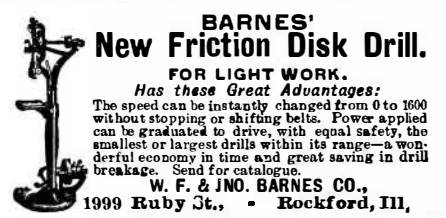
STATIONARY and PORTABLE. All Sizes.
Dwarfs in Size, but Giants in Strength.
Expense one cent an hour per horse power and requires but little attention to run them.
Every Engine Guaranteed. Full particulars free by mail. Mention this paper.
VAN DUZEN GAS & GASOLINE ENGINE CO., Cincinnati, O.

LEADING ENGINEERING WORKS of the Past Year. By O. Chanute. A brief description of a few of the leading engineering works of 1890, and an account of some engineering proposals which seem to possess features of novelty. Contained in SCIENTIFIC AMERICAN SUPPLEMENT, Nos. 814 and 815. Price 10 cents each. To be had at this office and from all newsdealers.



COMPLETE STEAM PUMP
10 SIZES FROM \$7 TO \$75
FOR DRIVE WELLS & ETC.
WRITE FOR PRICES AND DESCRIPTIVE CIRCULARS.
VAN DUZEN & TIFT
SOLE MAKERS.
CINCINNATI, O.

POROUS EARTHENWARE.—BY Chas. C. Gilman. An elaborate discussion of terra cotta and its future uses. Contained in SCIENTIFIC AMERICAN SUPPLEMENT, No. 804. Price 10 cents. To be had at this office and from all newsdealers.



BARNES' New Friction Disk Drill.
FOR LIGHT WORK.
Has these Great Advantages:
The speed can be instantly changed from 0 to 1600 without stopping or shifting belts. Power applied can be graduated to drive, with equal safety, the smallest or largest drills within its range—a wonderful economy in time and great saving in drill breakage. Send for catalogue.
W. F. & JNO. BARNES CO., 1999 Ruby St., - Rockford, Ill.



PELTON WATER WHEEL
Gives the highest efficiency of any wheel in the world. Simple and reliable, adapted to every variety of service, with heads of 20 feet and upward. Write for circulars.
The Pelton Water Wheel Co., 1214 Main St., San Francisco, Cal., or 235 Central Building, Liberty and West Streets, New York.

WOODEN TANKS FOR RAILROADS (WATER WORKS) MILLS, FARMS &c. COMPLETE STOCK OF CYPRESS LUMBER SPECIFICATIONS FURNISHED FOR FOUNDATIONS & TOWERS.
W. E. CALDWELL & CO. No. 217 E. MAIN ST. LOUISVILLE KY.



NIPPLE HOLDER
These holders are double ended, and hold two sizes of nipples each. They are made in various sizes, ranging from 3/8 to 4 inches.
See illustrated notice in SCI. AM., Oct. 24, 1891.

ADJUSTABLE STOCKS AND DIES, universally acknowledged to be **THE BEST.**
Send for 1891 Illustrated Catalogue and Price List.
ARMSTRONG MFG. CO., Bridgeport, Conn.

THE GRAVES ELEVATORS.
PASSENGER & FREIGHT
L. F. GRAVES & SON ROCHESTER N.Y. NEW YORK, BOSTON, ST. LOUIS, DETROIT.
THE AMERICAN BELL TELEPHONE CO.
95 MILK ST., BOSTON, MASS.

This Company owns the Letters Patent granted to Alexander Graham Bell, March 7th, 1876, No. 174,465, and January 30th, 1877, No. 186,787.
The transmission of Speech by all known forms of Electric Speaking Telephones infringes the right secured to this Company by the above patents, and renders each individual user of telephones not furnished by it or its licensees responsible for such unlawful use, and all the consequences thereof, and liable to suit therefor.

TANITE Emery, Emery Wheels, Emery Whetstones, Grinding Machines, Knife Sharpeners, Knife Grinders.
The Tanite Co., STROUDSBURG, PA. 161 WASHINGTON ST., NEW YORK.

THE SCIENTIFIC AMERICAN

ESTABLISHED 1846.
The Most Popular Scientific Paper in the World

Only \$3.00 a Year, Including Postage.
Weekly—52 Numbers a Year.

This widely circulated and splendidly illustrated paper is published weekly. Every number contains sixteen pages of useful information and a large number of original engravings of new inventions and discoveries, representing Engineering Works, Steam Machinery, New Inventions, Novelties in Mechanics, Manufactures, Chemistry, Electricity, Telegraphy, Photography, Architecture, Agriculture, Horticulture, Natural History, etc. Complete list of patents each week.
Terms of Subscription.—One copy of the SCIENTIFIC AMERICAN will be sent for one year—52 numbers—postage prepaid, to any subscriber in the United States, Canada, or Mexico, on receipt of three dollars by the publishers; six months, \$1.50; three months, \$1.00.
Clubs.—Special rates for several names, and to Post Masters. Write for particulars.
The safest way to remit is by Postal Order, Draft, or Express Money Order. Money carefully placed inside of envelopes, securely sealed, and correctly addressed, seldom goes astray, but is at the sender's risk. Address all letters and make all orders, drafts, etc., payable to
MUNN & CO., 361 Broadway, New York.

THE Scientific American Supplement

This is a separate and distinct publication from THE SCIENTIFIC AMERICAN, but is uniform therewith in size, every number containing sixteen large pages full of engravings, many of which are taken from foreign papers, and accompanied with translated descriptions. THE SCIENTIFIC AMERICAN SUPPLEMENT is published weekly, and includes a very wide range of contents. It presents the most recent papers by eminent writers in all the principal departments of Science and the Useful Arts, embracing Biology, Geology, Mineralogy, Natural History, Geography, Archaeology, Astronomy, Chemistry, Electricity, Light, Heat, Mechanical Engineering, Steam and Railway Engineering, Mining, Ship Building, Marine Engineering, Photography, Technology, Manufacturing Industries, Sanitary Engineering, Agriculture, Horticulture, Domestic Economy, Biography, Medicine, etc. A vast amount of fresh and valuable information obtainable in no other publication.
The most important Engineering Works, Mechanisms, and Manufactures at home and abroad are illustrated and described in the SUPPLEMENT.
Price for the SUPPLEMENT for the United States and Canada, \$5.00 a year; or one copy of the SCIENTIFIC AMERICAN and one copy of the SUPPLEMENT, both mailed for one year for \$7.00. Single copies, 10 cents. Address and remit by postal order, express money order, or check,
MUNN & CO., 361 Broadway, New York, Publishers SCIENTIFIC AMERICAN.

Building Edition.

THE SCIENTIFIC AMERICAN ARCHITECTS' AND BUILDERS' EDITION is issued monthly. \$2.50 a year. Single copies, 25 cents. Forty large quarto pages, equal to about two hundred ordinary book pages; forming a large and splendid Magazine of Architecture, richly adorned with elegant plates in colors, and with other fine engravings illustrating the most interesting examples of modern architectural construction and allied subjects. A special feature is the presentation in each number of a variety of the latest and best plans for private residences, city and country, including those of very moderate cost as well as the more expensive. Drawings in perspective and in color are given, together with full Plans, Specifications, Sheets of Details, Estimates, etc.
The elegance and cheapness of this magnificent work have won for it the Largest Circulation of any Architectural publication in the world. Sold by all newsdealers. \$2.50 a year. Remit to
MUNN & CO., Publishers, 361 Broadway, New York.

PRINTING INKS

The SCIENTIFIC AMERICAN is printed with CHAS. ENEU JOHNSON & CO'S INK, Tenth and Lombard Sts., Philadelphia, and 47 Rose St., opp. Duane, New York

PERFORATED METALS—MINING SCREENS
COAL AND ORE SEPARATORS, REVOLVING AND SHAKING SCREENS
JIGS & STAMP BATTERIES FOR ALL KINDS OF MILLING & MINING MACHINERY.
HARRINGTON & KING PERFORATING CO. CHICAGO.
NEW YORK OFFICE, 281 PEARL STREET.