

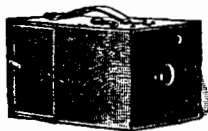
Advertisements.

Inside Page, each insertion - - - 75 cents a line. Back Page, each insertion - - - \$1.00 a line.

The above are charges per agate line—about eight words per line. This notice shows the width of the line, and is set in agate type. Engravings may head advertisements at the same rate per agate line, by measurement, as the letter press. Advertisements must be received at publication office as early as Thursday morning to appear in next issue.

★ ONE STAR HACK SAW WILL DO AS MUCH WORK AS FIVE OF ANY OTHER KIND.—M. B. ★

The Montauk CAMERA



Is compact and neat, covered with seal leather, supplied with double rapid rectilinear lens. Takes snap shots, interiors, exteriors, houses, groups, etc. Size of picture, 4 x 5 inches.

G. GENNERT, 56 East 10th Street, New York.

Victor Bicycles!



For pleasure, business, recreation, and for anything you could use a bicycle for. VICTORS ARE BEST! Send for catalogue. Overman Wheel Co., Makers, Chicopee Falls, Mass.

ELECTRICITY, LIGHT AND HEAT.

A lecture by Prof. C. F. Brackett, delivered before the New York Electric Club—facts about electrical conductors. Production of electric light in the cheapest possible way. The relations between the three vibratory forces and the significance of Herz's recent experiments. Contained in SCIENTIFIC AMERICAN SUPPLEMENT, Nos. 6183 and 6184. Price 10 cents each. To be had at this office and from all newsdealers.

The CHANDLER WATER MOTOR



Works well on Low and High Pressures. Single, Duplex, Triple, and Quadruple Automatic PISTON MOTORS, adapted to all classes of work. Send for Circulars. WM. H. LOCK, Buffalo, N. Y.

ICE-HOUSE AND COLD ROOM.—BY R. G. Hatfield. With directions for construction. Four engravings. Contained in SCIENTIFIC AMERICAN SUPPLEMENT, No. 6183. Price 10 cents. To be had at this office and from all newsdealers.

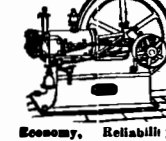
NEW KODAKS



"You press the button, we do the rest." Seven New Styles and Sizes ALL LOADED WITH Transparent Films.

For sale by all Photo. Stock Dealers. THE EASTMAN COMPANY, ROCHESTER, N. Y. Send for Catalogue.

2 to 40 H. P. The MOTOR of 19th CENTURY.



Can be used Any Place, to do Any Work, and by Any One. No Boiler! No Fire! No Steam! No Ashes! No Gases! No Engineer! A perfectly safe Motor for all places and purposes. Cost of operation about one cent an hour to each indicated horse power. For circulars, etc., address Charter Gas Engine Co., Economy, Reliability, Simplicity, Safety. P. O. Box 148, Sterling, Ill.

THE COPYING PAD.—HOW TO MAKE and how to use; with an engraving. Practical directions how to prepare the gelatine pad, and also the aniline ink by which the copies are made; how to apply the written letter to the pad; how to take off copies of the letter. Contained in SCIENTIFIC AMERICAN SUPPLEMENT, No. 6183. Price 10 cents. For sale at this office and by all newsdealers in all parts of the country.

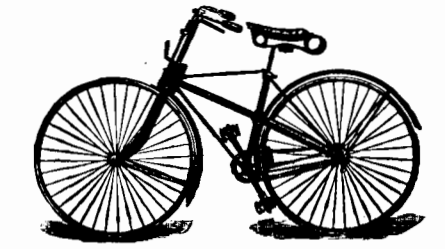
NICKEL AND ELECTRO-PLATING APPARATUS AND MATERIAL. THE LITTLE WONDER. OVER 1000 IN USE. HANSON VAN WINKLE & CO. NEWARK, N. J. 92 LIBERTY ST. N. Y.

PATENTS!

MESSRS. MUNN & CO., in connection with the publication of the SCIENTIFIC AMERICAN, continue to examine improvements, and to act as Solicitors of Patents for Inventors. In this line of business they have had forty-one years' experience, and now have unequalled facilities for the preparation of Patent Drawings, Specifications, and the prosecution of Applications for Patents in the United States, Canada, and Foreign Countries. Messrs. Munn & Co. also attend to the preparation of Caveats, Copyrights for Books, Labels, Reissues, Assignments, and Reports on Infringements of Patents. All business entrusted to them is done with special care and promptness, on very reasonable terms. A pamphlet sent free of charge, on application, containing full information about Patents and how to procure them; directions concerning Labels, Copyrights, Designs, Patents, Appeals, Reissues, Infringements, Assignments, Rejected Cases. Hints on the Sale of Patents, etc. We also send, free of charge, a Synopsis of Foreign Patent Laws, showing the cost and method of securing patents in all the principal countries of the world. MUNN & CO., Solicitors of Patents, 361 Broadway, New York. BRANCH OFFICES.—No. 622 and 624 F Street, Patent Building, near 7th Street, Washington, D. C.

TYPEWRITERS ALL MAKES. NEW & SECOND HAND. DUGHT, SOLD AND REFINISHED. EXCHANGED. NATIONAL TYPEWRITER EXCHANGE. NEW YORK. 200 LA SALLE ST. CHICAGO. NEW BRANCH OFFICE, 170 N. WABASH ST. CHICAGO.

ELECTRO MOTOR. SIMPLE. HOW TO MAKE. By G. M. Hopkins.—Description of a small electro motor device and constructed with a view to assisting amateurs to make a motor which might be driven with advantage by a current derived from a battery, and which would have sufficient power to operate a foot lathe or any machine requiring not over one man power. With 11 figures. Contained in SCIENTIFIC AMERICAN SUPPLEMENT, No. 6141. Price 10 cents. To be had at this office and from all newsdealers.



The HARTFORD SAFETY THE BEST \$100 BICYCLE MADE. Can be adjusted to fit any person, from a boy of 12 to a full-grown man. Catalogue Free. HARTFORD CYCLE CO., Hartford, Conn.

THE ONLY PRACTICAL LOW-PRICED TYPEWRITER. Catalogue free. Address Typewriter Department, POPE MFG. CO., Boston, New York, Chicago.

LEFFEL TURBINE WATER WHEELS Machine-Molded Gearing. DRIVING PLANT FOR CABLE RAILWAYS Shafting, Pulleys, and Hangers. Mixers and General Outfit for Fertilizer Works. N. B.—Special attention given to Heavy Gearing. Facilities for the heaviest class of work. Rolt. Poole & Son Co., Baltimore, Md.

NATIONAL STEEL TUBE CLEANER. BANKS THE HIGHEST Endorsed by the best Engineers. CHALMERS-SPENCE CO. Office, 59 Liberty Street, Works, 419-425 E. Eighth St., New York.

PULLEYS HANGERS, FRICTION CLUTCHES. 44 Park Place, N. Y. SHAPING SHEET METAL.—DESCRIPTION of a method of shaping zinc, copper, and other ductile metals by fluid pressure. With 11 figures. Contained in SCIENTIFIC AMERICAN SUPPLEMENT, No. 6183. Price 10 cents. To be had at this office and from all newsdealers.

VAN DUZEN GAS & GASOLINE ENGINE OPERATED WITH COAL AND OTHER MANUFACTURED GASES AND GASOLINE. RELIABLE AND ECONOMICAL. Fully Warranted. VAN DUZEN Gas & Gasoline Engine Co. 53 E. 2d St., Cincinnati, O.

THE AMERICAN BELL TELEPHONE CO. 95 MILK ST., BOSTON, MASS. This Company owns the Letters Patent granted to Alexander Graham Bell, March 7th, 1876, No. 174,465, and January 30th, 1877, No. 186,787. The transmission of speech by all known forms of Electric Speaking Telephones infringes the right secured to this Company by the above patents, and renders each individual user of telephones not furnished by it or its licensees responsible for such unlawful use, and all the consequences thereof, and liable to suit therefor.

Barrel, Keg, Hogshead AND STAVE MACHINERY. Over 50 varieties manufactured by E. & B. Holmes, BUFFALO, N. Y. Truss Hoop Driving. ALSO A FULL LINE OF WOOD WORKING MACHINERY.

METALLIC RAILWAY TIES.—A Review of the various metallic ties that have been devised as a substitute for wooden ones upon European Railways. With 6 figures. Contained in SCIENTIFIC AMERICAN SUPPLEMENT, No. 748. Price 10 cents. To be had at this office and from all newsdealers.

CUTLER DESK. BEST IN THE WORLD. A CUTLER & SON. BUFFALO, N. Y., U.S.A.

THE GREAT IMPROVEMENT IN ROOFING

We are now ready to supply the product of entirely new machinery and processes just completed, by aid of which we not only have greatly improved the strength and durability of our well-known ASBESTOS ROOFING, but have also secured a degree of uniformity never before attained in any similar fabric. We offer this as the PERFECTED form of the portable Roofing which we have manufactured with continued improvements during the past thirty years, and as the most desirable Roofing for general purposes. The important features of our recent improvements, for which patents have been allowed and others applied for in this Country and in Europe, are described in our new circular, which, with samples, will be sent free by mail. Our Asbestos Roofing is now in use upon Factories, Foundries, Cotton Gins, Chemical Works, Railroad Bridges, Cars, Steamboat Decks, etc., in all parts of the world. It is supplied ready for use, in rolls containing 200 square feet, and weighs, with Asbestos Roof Coating, ready for shipment, about 85 pounds to 100 square feet. It is adapted for steep or flat roofs in all climates, and can be readily applied by unskilled workmen. There are inferior imitations of our Asbestos Roofing. Purchasers are cautioned. Exclusive sale of our IMPROVED ASBESTOS ROOFING will be given to reliable dealers in important towns where we have not already made arrangements.

H. W. JOHNS MANUFACTURING CO. SOLE MANUFACTURERS OF H. W. Johns' Fire and Water Proof Asbestos Sheathing, Building Felt, etc. Asbestos Boiler Coverings, Steam Packings, Fire-Proof Paints, etc. Samples and Descriptive Price List Free by Mail. 87 Malden Lane, New York. CHICAGO. PHILADELPHIA. BOSTON.

VAN DUZEN'S PATENT LOOSE PULLEY OILER IS IN SUCH DEMAND THAT OTHERS ARE MAKING OILERS WHICH IS A DIRECT INFRINGEMENT ON OUR PATENTS VAN DUZEN & CO. Wrote for (Circular) C. N. T. I.

SAWS WANTED 50,000 Sawyers and Lumbermen to send us their full address for a copy of Emerson's Book of SAWS, new 1890 edition. We are first to introduce NATURAL GAS for heating and tempering Saws with wonderful effect upon improving their quality and toughness, enabling us to reduce prices. Address EMERSON, SMITH & CO. (Ltd.), Beaver Falls, Pa. INVENTORS and others desiring new articles manufactured and introduced, address P. O. Box 86, Cleveland, O.

PROGRESS MACHINE WORKS, A. & F. BROWN, 44 Park Place, N. Y.

INVISIBLE HINGES suitable for all kinds of fine work. Send for samples and price list. INVISIBLE HINGE CO., 818 Chapel Street, New Haven, Conn.

THE REFINEMENTS OF MODERN Measurements and Manipulations.—By J. A. Brashear. A very interesting account of the remarkable progress that has been made in modern times in the way of minute and accurate measurements in the various branches of science. Contained in SCIENTIFIC AMERICAN SUPPLEMENT, No. 744. Price 10 cents. To be had at this office and from all newsdealers.

PRESS THE BUTTON, IT LIGHTS! Burns a bright flame from a minute to 2 hours. The first practical self-lighting Pocket Lamp and Cigar Lighter ever introduced. A match safe in appearance, but smaller in size. A marvel of ingenuity. Useful and convenient. Sample, complete with all accessories, expressed, prepaid to any address, on receipt of \$1.00. Magic Lighter Co., 227 Broadway, N. Y. Energetic agents make immense success.

OBESITY.—BY WALTER MENDELSON, M.D. A very interesting paper, exhaustively treating of the causes of obesity and the proper method of combating it. Contained in SCIENTIFIC AMERICAN SUPPLEMENT, No. 744. Price 10 cents. To be had at this office and from all newsdealers.



Scientific Book Catalogue RECENTLY PUBLISHED. Our new catalogue containing over 100 pages, including works on more than fifty different subjects. Will be mailed free to any address on application. MUNN & CO., Publishers Scientific American, 361 Broadway, New York.

SYRACUSE MALLEABLE IRON WORKS

THE PHONOGRAPH.—A DETAILED description of the new and improved form of the phonograph just brought out by Edison. With 8 engravings. Contained in SCIENTIFIC AMERICAN SUPPLEMENT, No. 632. Price 10 cents. To be had at this office and from all newsdealers.

GRAVESELEVATORS. PASSENGER & FREIGHT. L. S. GRAVES & SON, ROCHESTER, N. Y.

THOMAS ALVA EDISON.—A BIOGRAPHICAL sketch of the great inventor, with full-page portraits from a recent photograph. Contained in SCIENTIFIC AMERICAN SUPPLEMENT, No. 748. Price 10 cents. To be had at this office and from all newsdealers.

COMPTOMETER (TRADE MARK.) ALL ARITHMETICAL PROBLEMS Solved rapidly and accurately by using the COMPTOMETER. Saves 40 per cent. of time. Entire relief from mental strain. Adapted to all commercial and scientific computations. Send for circular. FELT & TARRANT MFG. CO., 52-56 Illinois St., Chicago.

JENKINS BROS. VALVES! JENKINS BROS., 71 John St., N. Y.; 105 Milk St., Boston; 21 North 5th St., Phila.; 54 Dearborn St., Chicago.

MALLEABLE AND FINE GRAY IRON AND STEEL. FACTORIES FROM SPECIAL PATENTS. THOMAS DEVLIN & CO. 111 CHICAGO & AMERICAN ST. PHILA.

THE Scientific American

ESTABLISHED 1846. The Most Popular Scientific Paper in the World. Only \$3.00 a Year, including Postage. Weekly. 52 Numbers a Year.

This widely circulated and splendidly illustrated paper is published weekly. Every number contains sixteen pages of useful information and a large number of original engravings of new inventions and discoveries, representing Engineering Works, Steam Machinery, New Inventions, Novelties in Mechanics, Manufactures, Chemistry, Electricity, Telegraphy, Photography, Architecture, Agriculture, Horticulture, Natural History, etc. Complete List of Patents each week.

Terms of Subscription.—One copy of the SCIENTIFIC AMERICAN will be sent for one year—52 numbers—postage prepaid, to any subscriber in the United States, Canada or Mexico, on receipt of three dollars by the publishers; six months, \$1.50; three months, \$1.00. Clubs.—Special rates for several names, and to Post Masters. Write for particulars. The safest way to remit is by Postal Order, Draft, or Express Money Order. Money carefully placed inside of envelopes, securely sealed, and correctly addressed, seldom goes astray, but is at the sender's risk. Address all letters and make all orders, drafts, etc., payable to MUNN & CO., 361 Broadway, New York.

THE Scientific American Supplement.

This is a separate and distinct publication from THE SCIENTIFIC AMERICAN, but is uniform therewith in size, every number containing sixteen large pages full of engravings, many of which are taken from foreign papers, and accompanied with translated descriptions. THE SCIENTIFIC AMERICAN SUPPLEMENT is published weekly, and includes a very wide range of contents. It presents the most recent papers by eminent writers in all the principal departments of Science and the Useful Arts, embracing Biology, Geology, Mineralogy, Natural History, Geography, Archeology, Astronomy, Chemistry, Electricity, Light, Heat, Mechanical Engineering, Steam and Railway Engineering, Mining, Ship Building, Marine Engineering, Photography, Technology, Manufacturing Industries, Sanitary Engineering, Agriculture, Horticulture, Domestic Economy, Biography, Medicine, etc. A vast amount of fresh and valuable information obtainable in no other publication.

The most important Engineering Works, Mechanisms, and Manufactures at home and abroad are illustrated and described in the SUPPLEMENT. Price for the SUPPLEMENT for the United States and Canada, \$5.00 a year, or one copy of the SCIENTIFIC AMERICAN and one copy of the SUPPLEMENT, both mailed for one year for \$7.00. Single copies 10 cents. Address and remit by postal order, express money order, or check, MUNN & CO., 361 Broadway, N. Y., Publishers SCIENTIFIC AMERICAN.

Building Edition.

THE SCIENTIFIC AMERICAN ARCHITECTS' AND BUILDERS' EDITION is issued monthly. \$2.50 a year. Single copies, 25 cents. Forty large quarto pages, equal to about two hundred ordinary book pages; forming a large and splendid Magazine of Architecture, richly adorned with elegant plates in colors, and with other fine engravings; illustrating the most interesting examples of modern Architectural Construction and allied subjects. A special feature is the presentation in each number of a variety of the latest and best plans for private residences, city and country, including those of very moderate cost as well as the more expensive. Drawings in perspective and in color are given, together with full Plans, Specifications, Sheets of Details, Estimates, etc. The elegance and cheapness of this magnificent work have won for it the Largest Circulation of any Architectural publication in the world. Sold by all newsdealers. \$2.50 a year. Remit to MUNN & CO., Publishers, 361 Broadway, New York.

PRINTING INKS. THE "Scientific American" is printed with CHAS. HENRY JOHNSON & CO.'S INK, Tenth and Lombard Sts., Phila. and 47 Rose St., opp. Duane St., N. Y.