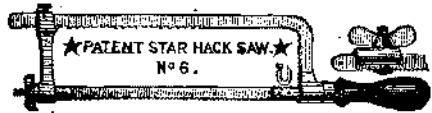


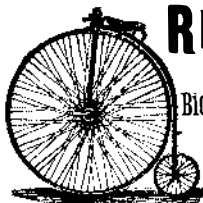
Advertisements.

Inside Page, each insertion - - - 25 cents a line. Back Page, each insertion - - - \$1.00 a line.



Both the Frames and Blades of our Star Hack Saws are now as perfect as human skill can make them.

MILLERS FALLS CO., 93 Reade Street, New York.



RISE CYCLES!

VICTORS ARE BEST! Bicycles, Tricycles, and Safeties. Send for free illustrated Catalogue.

THE COPYING PAD.—HOW TO MAKE and how to use; with an engraving. Practical directions how to prepare the gelatine pad, and also the aniline ink by which the copies are made.

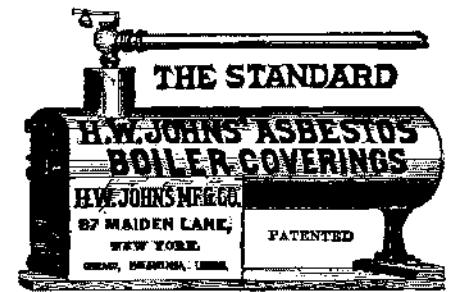
THE KODAK CAMERA

Makes 100 instantaneous Pictures by simply pressing a button. Anybody can use it who can wind a watch. No focusing. No tripod. Rapid. Rectilinear Lens. Photographs moving objects. Can be used indoors.

The Eastman Dry Plate & Film Co. Rochester, N. Y. 115 Oxford St., London.

ERIE ENGINE WORKS CLEVELAND & HARDWICK, OHIO. STATIONARY, PORTABLE, SEMI-PORTABLE COMBINED AGRICULTURAL ENGINES, STATIONARY, PORTABLE VERTICAL BOILERS.

ON VARIABLE LOAD, INTERNAL Friction, and Engine Speed and Work.—By Dr. R. H. Thurston. The result of recent experiments to determine the character of the internal friction of engines, without condensers, and the method of its variation, with the variation of the usual conditions of operation.



THE PHONOGRAPH.—A DETAILED description of the new and improved form of the phonograph just brought out by Edison. With 8 engravings. Contained in SCIENTIFIC AMERICAN SUPPLEMENT, No. 632. Price 10 cents.

MALLEABLE AND FINE GRAY IRON ALSO STEEL CASTINGS FROM SPECIAL PATTERNS. THOMAS DEVLIN & CO., PHILA.

PATENTS.

MESSRS. MUNN & CO., in connection with the publication of the SCIENTIFIC AMERICAN, continue to examine improvements, and to act as Solicitors of Patents for Inventors.

THE GUTTA PERCHA & RUBBER MFG. CO.

The Largest Manufacturers of Mechanical Rubber Goods in the World. ESTABLISHED 1866. Packing, Belting, Hose, Mats, Matting, etc. 35 WARREN STREET, NEW YORK.

CUTLER DESK BEST IN THE WORLD.

Scientific Book Catalogue

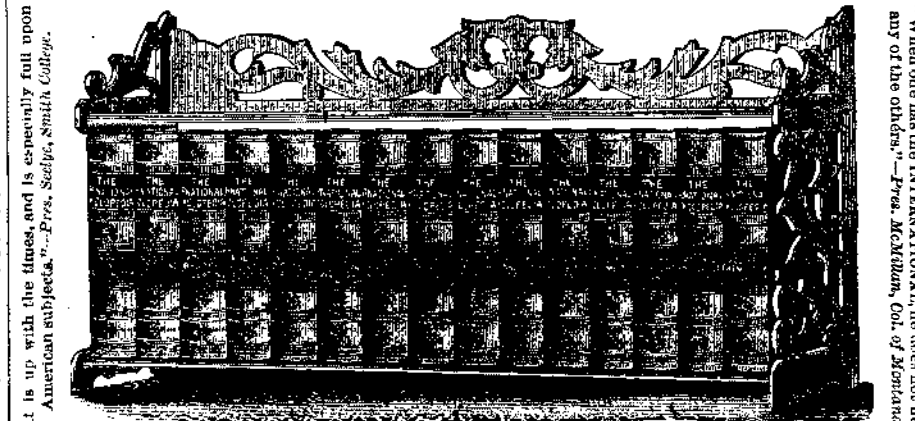
RECENTLY PUBLISHED. Our new catalogue containing over 100 pages, including works on more than fifty different subjects. Will be mailed free to any address on application.

MUNN & CO., Publishers Scientific American, 361 Broadway, New York.



PATENT JACKET KETTLES, Plain or Porcelain Lined. Tested to 100 lb. pressure. Send for Catalogue. H. AND B. BURR & CO., 614 and 616 Market St., Philadelphia, Pa.

THE INTERNATIONAL CYCLOPEDIA



Edition of 1889. FIFTEEN LARGE ROYAL OCTAVO VOLUMES. MORE THAN 13,000 PAGES. MORE THAN 49,000 TOPICS. 150 DOUBLE PAGE ILLUSTRATIONS. 100 DOUBLE PAGE MAPS.

THE CUSHMAN KEY DRILL CHUCK. This is an improvement over all other chucks of its class and is fully guaranteed.

THE AMERICAN BELL TELEPHONE CO. 95 MILK ST., BOSTON, MASS.

This Company owns the Letters Patent granted to Alexander Graham Bell, March 7th, 1876, No. 174,465, and January 30th, 1877, No. 186,787.

ASBESTOS PIPE COVERINGS

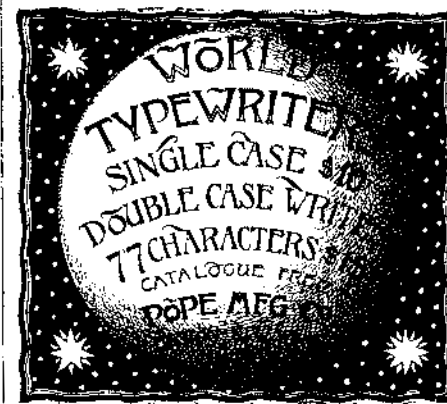
Made entirely of ASBESTOS. Absolutely Fire Proof. BRAIDED PACKING, MILL BOARD, SHEATHING, CEMENT, FIBRE AND SPECIALTIES.

NATIONAL FILTER SPECIAL SIZE TO FILTER ENTIRE SUPPLY OF WATER FOR HOUSE. GUARANTEED TO PRODUCE BRIGHT SPARKLING WATER.

SYRACUSE MALLEABLE IRON WORKS

ELECTRO MOTOR. SIMPLE. HOW TO make. By G. M. Hopkins.—Description of a small electro motor devised and constructed with a view to assisting amateurs to make a motor which might be driven with advantage by a current derived from a battery, and which would have sufficient power to operate a foot lathe or any machine requiring not over one man power.

PATENTS FOR SALE.—Steam Trap, Back Pressure Valve, and Mechanical Boiler Cleaner. Investigate. Address TAYLOR BROS., New Orleans, La.



KEY SEATING Machines and 20" Drills. W. P. DAVIS, Rochester, N. Y.

THE Scientific American

ESTABLISHED 1846. The Most Popular Scientific Paper in the World. Only \$3.00 a Year, including Postage. Weekly. 52 Numbers a Year.

This widely circulated and splendidly illustrated paper is published weekly. Every number contains sixteen pages of useful information and a large number of original engravings of new inventions and discoveries.

Terms of Subscription.—One copy of the SCIENTIFIC AMERICAN will be sent for one year—52 numbers—postage prepaid, to any subscriber in the United States or Canada, on receipt of three dollars by the publishers; six months, \$1.50; three months, \$1.00.

MUNN & CO., 361 Broadway, New York. THE Scientific American Supplement.

This is a separate and distinct publication from THE SCIENTIFIC AMERICAN, but is uniform therewith in size, every number containing sixteen large pages full of engravings, many of which are taken from foreign papers, and accompanied with translated descriptions.

Building Edition. THE SCIENTIFIC AMERICAN ARCHITECTS' AND BUILDERS' EDITION is issued monthly. \$2.50 a year. Single copies, 25 cents.

PRINTING INKS. THE "Scientific American" is printed with CHAS. T. JENNE JOHNSON & CO.'S INK.