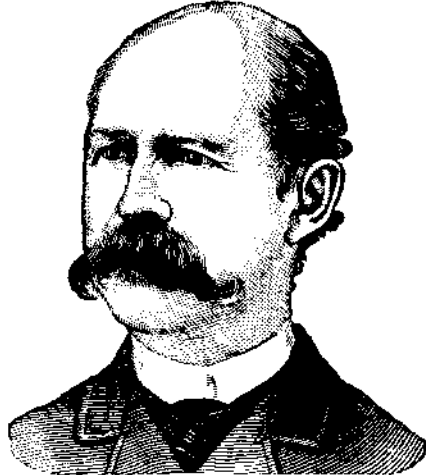


Advertisements.

Inside Page, each insertion - - - 25 cents a line. Back Page, each insertion - \$1.00 a line.

CAUTION

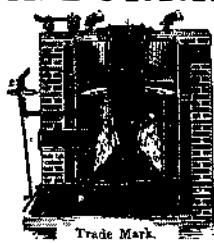
Beware of Fraud, as my name and the price are stamped on the bottom of all my advertised shoes before leaving the factory, which protect the wearers against high prices and inferior goods.



W. L. DOUGLAS \$3 SHOE. FOR GENTLEMEN.

The only calf \$3 SEAMLESS Shoe smooth inside. NO TACKS or WAX THREAD to hurt the feet, easy as hand-sewed and WILL NOT RIP.

The DUNNING BOILER



Oldest and Best FOR Steam and Hot Water HEATING. Over 13,500 in use.

TO BUSINESS MEN.

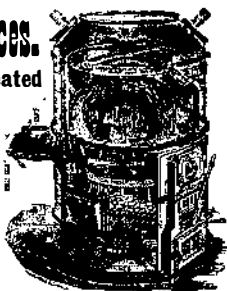
The value of the SCIENTIFIC AMERICAN as an advertising medium cannot be overestimated. Its circulation is many times greater than that of any similar journal now published.

MUNN & CO., Publishers, 361 Broadway, New York.

Novelty Hot Air Furnaces.

Expose an Immense Heated Surface.

Extract all the Heat from the Gases. Furnish Pure Warm Air in Abundance. Fourteen Years of Test. Universally satisfactory.



PATENTS.

MESSRS. MUNN & CO., in connection with the publication of the SCIENTIFIC AMERICAN, continue to examine inventions, and to act as Solicitors of Patents for Inventors.

MUNN & CO., Solicitors of Patents, 361 Broadway, New York.



The Original Unvulcanized Packing. CALLED THE STANDARD - As it is the Packing by which all others are compared.

The "ALLARD" SPIRAL SCREW DRIVER. For Light and Rapid Work. For Machinists, Gun and Locksmiths, Cabinet Makers and others.

STEEL BALLS.

For Anti-Friction Bearings, of Best Cast Steel. Hardened, Ground, and Burnished, from 3-16 in. to 2 in. diameter.

THE COPYING PAD - HOW TO MAKE and how to use; with an engraving. Practical directions how to prepare the gelatine pad, and also the antineck by which the copies are made.

MALLEABLE AND FINE GRAY IRON ALSO STEEL. THOMAS DEVLIN & CO. FINE TUNING JAPAN PATTERNS

TELESCOPES - THEIR HISTORY and the discoveries made with them - By Prof. E. S. Holden. An interesting historical paper, discussing the development of the telescope from the time of Galileo up to the present day.

SAWS Wanted 50,000 Sawyers and Lumbermen to send us their full address for a copy of Emerson's Book of SAWS.

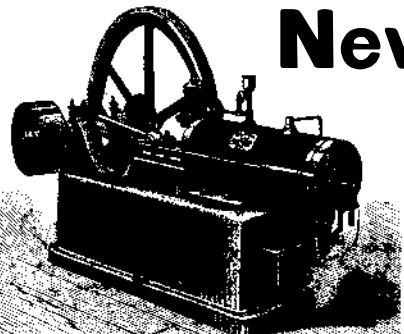
JAMES B. EADS - AN ACCOUNT OF the life and labors of this eminent engineer. With a portrait. Contained in SCIENTIFIC AMERICAN SUPPLEMENT, No. 592.



FOR SALE - VALUABLE PATENT. Illustrated in SCI. AM. of Sept. 8, 1888. Address W. F. ALTFATHER, Weatherford, Texas.

SEVERN AND MERSEY TUNNELS. Full description of these two important engineering works, with two engravings. Contained in SCIENTIFIC AMERICAN SUPPLEMENT, No. 604.

COPPER TUBES SHEET BRASS WIRE. Mention this paper.



New Gas Engine "The Baldwin"

Exhibited at the late American Institute Fair, New York. A four horse-power engine in connection with storage battery, running 34 incandescent electric lights.

Otis Brothers & Co. Elevators and Hoisting Machinery, 38 PARK ROW, NEW YORK.

THE BRIDGEPORT WOOD FINISHING CO. G. M. BREINIG AGENT. WHEELERS PATENT WOOD FILLER. BREINIG'S LITHOGEN SILICATE PAINT.

THE AMERICAN BELL TELEPHONE CO. 95 MILK ST., BOSTON, MASS.

This Company owns the Letters Patent granted to Alexander Graham Bell, March 7th, 1876, No. 174,465, and January 30th, 1877, No. 186,787.

The transmission of Speech by all known forms of Electric Speaking Telephones infringes the right secured to this Company by the above patents.

KEUFFEL & ESSER, New York. INDELIBLE DRAWING INKS. Black, Brown, Blue, Green, Scarlet, Carmine, Yellow.

THE BACKUS WATER MOTOR

THE BACKUS MOTOR. Is the cheapest power known for driving all kinds of light machinery.

THE BACKUS EXHAUSTER. A wonderful Air Mover. Invaluable for ventilating factories and public buildings.

THE BACKUS EXHAUSTER

ICE and REFRIGERATING MACHINES. The Pictet Artificial Ice Company (Limited), Room 6, Coal & Iron Exchange, New York.

CHALLENGE EVERY GRINDING. BRASS WORK. Small Brass Work & Models. Also Nickel Plating.

SYRACUSE MALLEABLE IRON WORKS. W. B. BURNS PROP.

HYATT FILTERS.

The Franklin Institute of Philadelphia has awarded The Scott Legacy Premium Medal to this Company for the adaptability of their system to the Purification of Water Supplies of Cities.

WIRE ROPE

Address JOHN A. ROEBLING'S SONS, Manufacturers, Trenton, N. J., or 117 Liberty Street, New York.

THE Scientific American

ESTABLISHED 1846. The Most Popular Scientific Paper in the World. Only \$3.00 a Year, including Postage. Weekly. 52 Numbers a Year.

This widely circulated and splendidly illustrated paper is published weekly. Every number contains sixteen pages of useful information and a large number of original engravings of new inventions and discoveries.

Terms of Subscription. - One copy of the SCIENTIFIC AMERICAN will be sent for one year - 52 numbers - postage prepaid, to any subscriber in the United States or Canada, on receipt of three dollars by the publishers.

MUNN & CO., 361 Broadway, New York. THE Scientific American Supplement.

This is a separate and distinct publication from THE SCIENTIFIC AMERICAN, but is uniform therewith in size, every number containing sixteen large pages full of engravings, many of which are taken from foreign papers, and accompanied with translated descriptions.

The most important Engineering Works, Mechanisms, and Manufactures at home and abroad are illustrated and described in the SUPPLEMENT. Price for the SUPPLEMENT for the United States and Canada, \$5.00 a year, or one copy of the SCIENTIFIC AMERICAN and one copy of the SUPPLEMENT, both mailed for one year for \$7.00.

MUNN & Co., 361 Broadway, N. Y., Publishers SCIENTIFIC AMERICAN.

Builders Edition. THE SCIENTIFIC AMERICAN ARCHITECTS' AND BUILDERS' EDITION is issued monthly. \$2.50 a year. Single copies, 25 cents.

MUNN & CO., Publishers, 361 Broadway, New York.

PRINTING INKS. THE "Scientific American" is printed with CHAS. T. ENES JOHNSON & CO.'S INK.