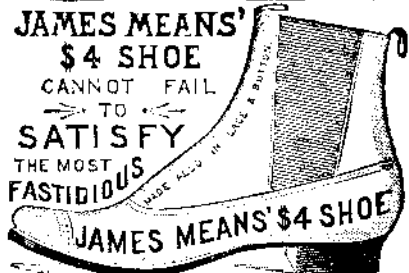
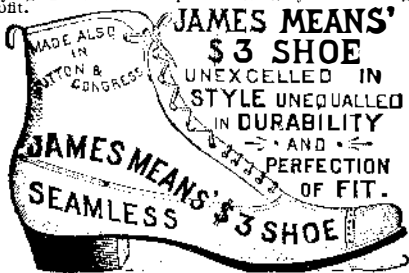


Advertisements.

Inside Page, each insertion... 25 cents a line. Back Page, each insertion... \$1.00 a line.

The March of Progress! OUR LATEST IMPROVEMENT!

"Competition is the life of trade," and if you have not seen our improved \$3 Shoe, made for the Summer and Fall trade of 1888, you cannot imagine how lively trade is, or how hard our competitors have to work to keep within sight of us.



Such has been the recent progress in our branch of industry that we are now able to affirm that the James Means \$1 Shoe is in every respect equal to the shoes which only a few years ago were retailed at eight or ten dollars.

DIAMONDS and CARBON

For Prospecting Mining Drills, also for all kinds of Mechanical Purposes. The subscriber is the Pioneer in this business, and is the Oldest Established House in the States.

THE COPYING PAD.—HOW TO MAKE and how to use; with an engraving. Practical directions how to prepare the gelatine pad, and also the aniline ink by which the copies are made.

MALLEABLE AND FINE GRAY IRON ALSO STEEL CASTINGS FROM SPECIAL PATTERNS.

ALCOHOL SWEET POTATO.—AN account of a new industry recently established at the Azores—that of the distillation of alcohol from raw sweet potatoes.

PHOTOGRAPHIC OUTFITS. Description of some new mining plants constructed in England for use in the Transvaal, Austria and Hungary.

GOLD MINING MACHINERY.—Description of some new mining plants constructed in England for use in the Transvaal, Austria and Hungary.

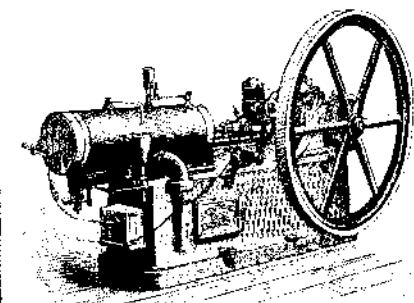
Barnes' Foot-Power Machinery. Complete outfits for Actual Workshop Business. Read what a customer says: "Considering its capacity and the accuracy of its work, it is a really first class machine."

PATENTS.

MESSRS. MUNN & CO. in connection with the publication of the SCIENTIFIC AMERICAN, continue to examine improvements, and to act as Solicitors of Patents for Inventors.

NEW GAS ENGINE

"The Baldwin"

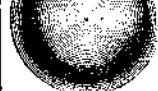


Exhibited at the late American Institute Fair, New York. A four-horse-power engine in connection with storage battery, running 24 incandescent electric lights (and without battery, 32 lights), giving a perfect light, with all the steadiness that can be obtained from the high-speed steam engines in common use for electric lighting.

Otis Brothers & Co. Elevators and Hoisting Machinery, 38 PARK ROW, NEW YORK.

THE AGE OF THE STARS.—BY Prof. Janssen. History of the discoveries that have led to the introduction of the doctrine of evolution in the science of astronomy.

STEEL BALLS. For Anti-Friction Bearings, of Best Cast Steel, Hardened, Ground, and Burnished, from 3-16 in. to 2 in. diameter.



Simond's Rolling-Machine Co., Fitchburg, Mass.

HOME-MADE INCUBATOR.—PRACTICAL directions for the manufacture of an effective incubator that has been carefully tested and found to perform all that may be reasonably expected.

PRESERVATION OF MEAT Without Cans—Egg shell method. Apply to Dr. SALZER, 613 Park Ave., Baltimore, Md.

TO INVENTORS AND MANUFACTURERS

The 57th Annual Exhibition OF THE American Institute of the City of New York Will Open OCTOBER 3, 1888.

THE MODERN ICE YACHT.—BY Geo. W. Polk. A new and valuable paper, containing full practical directions and specifications for the construction of the fastest and best kind of Ice Yachts of the latest, most approved forms.



PIPE COVERINGS Made entirely of ASBESTOS. Absolutely Fire Proof. BRAIDED PACKING, MILL BOARD, SHEATHING, CEMENT, FIBRE AND SPECIALTIES.

FOR SALE. Patent for a Simple and Compact Patent Knife Cleaning Machine. See illustrated notice in SCIENTIFIC AMERICAN of September 1, 1888.

COLUMBIA BICYCLES. TRICYCLES TANDEM GUARANTEED—HIGHEST GRADE ILLUSTRATED CATALOGUE—FREE.—POPE Mfg. Co. 79 FRANKLIN ST. BOSTON

MACHINISTS' SUPPLIES. LATHES, CHUCKS, TOOLS, DRILLS, SCREWS, CALLIPERS, ETC.

JAMES B. EADS.—AN ACCOUNT OF the life and labors of this eminent engineer. With a portrait. Contained in SCIENTIFIC AMERICAN SUPPLEMENT, No. 592. Price 10 cents.

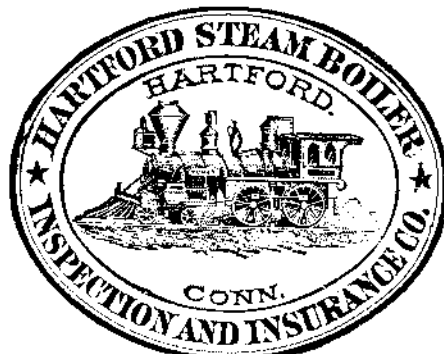
AMATEUR PHOTOGRAPHY. The most fascinating AMUSEMENT for home or outdoor recreation.

Complete Outfits, \$10.00 and upward. ROCHESTER OPTICAL COMPANY, 21 Aqueduct Street, Rochester, N. Y.

25% TO 50% SAVING IN GAS BILLS TO MANUFACTURERS By adopting Chamberlain's Gas Controller Burner.

CALL FOR AND INSIST ON HAVING JENKINS BROS. VALVES IF YOU WANT THE MOST DURABLE & RELIABLE.

THE PHONOGRAPH.—A DETAILED description of the new and improved form of the phonograph just brought out by Edison.



DREDGER CAUTION Parties whom I have sued and others infringing my patents are seeking to sell their machines or subvert patents before judgment can be had.



PIPE COVERINGS Made entirely of ASBESTOS. Absolutely Fire Proof. BRAIDED PACKING, MILL BOARD, SHEATHING, CEMENT, FIBRE AND SPECIALTIES.

PATENT JACKET KETTLES, Plan or Porcelain Lined. Tested to 100 lb. pressure. See for Lists. HANB, BURR & CO., 614 and 616 Market St., Philadelphia, Pa.

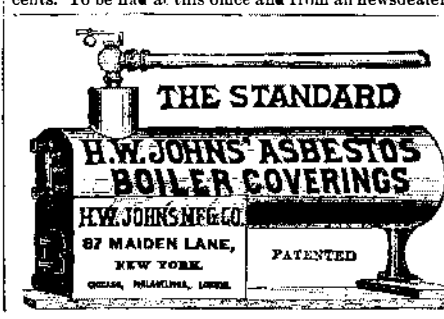
HOW TO MAKE AN INCUBATOR.—Full directions, illustrated with 7 figures. Also directions for operating the apparatus. Contained in SCIENTIFIC AMERICAN SUPPLEMENT, No. 612. Price 10 cents.

ERIE ENGINE WORKS CLEVELAND & HARDWICK, WALNUT STREET, ERIE, PA. STATIONARY, PORTABLE, SEMI-PORTABLE, COMBINED, AGRICULTURAL ENGINES, STATIONARY, PORTABLE, VERTICAL BOILERS.

ELECTRIC CONVEYORS.—DESCRIPTION of two ingenious systems for the electric carriage of small packages. Illustrated with 11 engravings. Contained in SCIENTIFIC AMERICAN SUPPLEMENT, No. 588. Price 10 cents.

KEUFFEL & ESSER, New York. INDELIBLE DRAWING INKS. Black, Brown, Blue, Green, Scarlet, Carmine, Yellow. The best ever produced. Have our Patent Ink Filler, which regulates supply to pen; prevents soiling outside of pen-blades; is the only cleanly device for filling pens.

FIRE-BRICK.—BY R. A. COOK, A.M. An interesting description of the mining of fire clay and the manufacture of fire brick at Mt. Savage, Maryland where is located one of the largest establishments in the country devoted to this industry.



25% TO 50% SAVING IN GAS BILLS TO MANUFACTURERS By adopting Chamberlain's Gas Controller Burner.

CHALLENGE EMERY GRINDING AND POLISHING MACHINERY

NAVAL ARCHITECTURE.—AN interesting review by Mr. R. Durcan, of the progress that has been made in this branch of science during the last fifty years.

SYRACUSE MALLEABLE IRON WORKS

THE AMERICAN BELL TELEPHONE CO.

This Company owns the Letters Patent granted to Alexander Graham Bell, March 7th, 1876, No. 174,465, and January 30th, 1877, No. 186,787.

The transmission of Speech by all known forms of Electric Speaking Telephones infringes the right secured to this Company by the above patents, and renders each individual user of telephones not furnished by it or its licensees responsible for such unlawful use, and all the consequences thereof, and liable to suit therefor.

AUTOMATIC CUT OFF ENGINES

THE Scientific American

ESTABLISHED 1846. The Most Popular Scientific Paper in the World. Only \$3.00 a Year, including Postage, Weekly, 52 Numbers a Year.

This widely circulated and splendidly illustrated paper is published weekly. Every number contains sixteen pages of useful information and a large number of original engravings of new inventions and discoveries.

Terms of Subscription.—One copy of the SCIENTIFIC AMERICAN will be sent for one year—52 numbers—postage prepaid, to any subscriber in the United States or Canada, on receipt of three dollars by the publishers; six months, \$1.50; three months, \$1.00.

The safest way to remit is by Postal Order, Draft, or Express Money Order. Money carefully placed inside of envelopes, securely sealed, and correctly addressed, seldom goes astray, but is at the sender's risk.

MUNN & CO., 361 Broadway, New York.

THE Scientific American Supplement.

This is a separate and distinct publication from THE SCIENTIFIC AMERICAN, but is uniform therewith in size, every number containing sixteen large pages full of engravings, many of which are taken from foreign papers, and accompanied with translated descriptions.

Price for the SUPPLEMENT for the United States and Canada, \$5.00 a year, or one copy of the SCIENTIFIC AMERICAN and one copy of the SUPPLEMENT, both mailed for one year for \$7.00. Single copies 10 cents. Address and remit by postal order, express money order, or check. MUNN & Co., 361 Broadway, N. Y., Publishers SCIENTIFIC AMERICAN.

Builders Edition.

THE SCIENTIFIC AMERICAN ARCHITECTS' AND BUILDERS' EDITION is issued monthly. \$2.50 a year. Single copies, 25 cents. Forty large quarto pages, equal to about two hundred ordinary book pages, equal to a large and splendid Magazine of Architecture, richly adorned with elegant plates in colors, and with other fine engravings; illustrating the most interesting examples of modern Architectural Construction and allied subjects.

A special feature is the presentation in each number of a variety of the latest and best plans for private residences, city and country, including those of very moderate cost as well as the more expensive. Drawings in perspective and in color are given, together with full Plans, Specifications, Sheets of Details, Estimates, etc. The elegance and cheapness of this magnificent work have won for it the Largest Circulation of any Architectural publication in the world. Sold by all newsdealers. \$2.50 a year. Remit to MUNN & CO., Publishers, 361 Broadway, New York.

PRINTING INKS.

THE "Scientific American" is printed with CHAS. T. ENEU JOHNSON & CO.'S INK, Tenth and Lombard Sts., Phila., and 47 Rose St., opp. Duane St., N. Y.