

Founded by Mathew Carey, 1786.

# BAIRD'S BOOKS FOR PRACTICAL MEN.

Unrivalled enlarged CATALOGUE OF PRACTICAL AND SCIENTIFIC BOOKS, 96 pages, 8vo; a Catalogue of Books on DYEING, CALICO PRINTING, WEAVING, COTTON and WOOLLEN MANUFACTURE, 4to; Catalogue of a choice collection of PRACTICAL, SCIENTIFIC and ECONOMIC BOOKS, 4to; List of Books on STEAM and the STEAM ENGINE, MECHANICS, MACHINERY, and ENGINEERING, 4to; List of Books on MINING, MINING MACHINERY, COAL, etc., 4to; Catalogue of Books and Pamphlets on SOCIAL SCIENCE and POLITICAL ECONOMY; a Catalogue of recent additions to our stock of PRACTICAL SCIENTIFIC AND TECHNICAL BOOKS; as well as a List of LEADING BOOKS on METAL MINING, METALLURGY, MINERALOGY, ASSAYING, and CHEMICAL ANALYSIS, sent free to any address in the world.

SPECIAL NOTICE.—Every Reader of the SCIENTIFIC AMERICAN, no matter in what part of the world, is specially invited to apply to us by mail for these Catalogues, which will be sent free of postage.

HENRY CAREY BAIRD & CO., Industrial Publishers, Booksellers, and Importers, 810 WALNUT STREET, PHILADELPHIA.



## GREAT IMPROVEMENTS RECENTLY MADE IN CRUSHING AND GRINDING

GOLD AND SILVER ORES, BONES, PHOSPHATE ROCK, & CHEMICALS. We compel Quartz to grind Quartz. Address for new circular BAUGH & SONS, Philadelphia.

The Phosphor-Bronze Smelting Co. Limited.



New Offices and Salesroom, 512 Arch Street, PHILADELPHIA PA.

## PHOSPHOR-BRONZE Wire, Rods, Sheets, Bolts, etc.

Pamphlets and Particulars on Application.

## OWNERS OF THE U. S. PHOSPHOR-BRONZE PATENTS.

Sole Manufacturers of Phosphor-Bronze in the U. S.

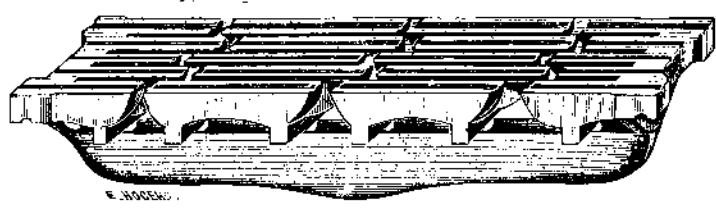
## THE BAKER BLOWER. [FORCED BLAST.]

The revolving parts are all accurately balanced. Warranted Superior to any other. WILBRAHAM BROS., No. 2318 Frankford Avenue PHILADELPHIA, PA.

## COE BRASS MFG. CO. BRASS TORRINGTON - CONN. WIRE AND COPPER MATERIALS FOR METALLIC. IN SHEETS, AMMUNITION A SPECIALTY. BLANKS

## PATENTS.

MESSRS. MUNN & CO. in connection with the publication of the SCIENTIFIC AMERICAN, continue to examine Improvements, and to act as Solicitors of Patents for Inventors. In this line of business they have had thirty-five years' experience, and now have unequalled facilities for the preparation of Patent Drawings, Specifications, and the prosecution of Applications for Patents in the United States, Canada, and Foreign Countries. Messrs. Munn & Co. also attend to the preparation of Caveats, Copyrights for Books, Labels, Reissues, Assignments, and Reports on Infringements of Patents. All business intrusted to them is done with special care and promptness, on very reasonable terms. A pamphlet sent free of charge, on application, containing full information about Patents and how to procure them; directions concerning Labels, Copyrights, Designs, Patents, Appeals, Reissues, Infringements, Assignments, Rejected Cases, Hints on the Sale of Patents, etc. We also send, free of charge, a Synopsis of Foreign Patent Laws, showing the cost and method of securing patents in all the principal countries of the world. MUNN & CO., Solicitors of Patents, 37 Park Row, New York. BRANCH OFFICE.—Corner of F and 7th Streets, Washington, D. C.



W. C. WREN'S Pat. Grate Bar, Manufactured by D. S. CRESWELL, Eagle Iron Foundry, 816 RACE ST., PHILADELPHIA, PA.

## ROOFING.

For steep or flat roofs. Applied by ordinary workmen at one-third the cost of tin. Circulars and samples free. Agents Wanted. T. NEW, 32 John Street, New York.

## DO YOUR OWN PRINTING

Presses and outfits from \$3 to \$500 Over 2,000 styles of type. Catalogue and reduced price list free. H. HOOVER, Phila., Pa. MACHINERY of every description. 121 Chambers and 103 Reade Sts., New York. THE GEORGE PLACE MACHINERY AGENCY.

## ELEVATORS, FOR SECOND-HAND ENGINES,

Address HARRIS IRON WORKS, Titusville, Pa. BIBB'S Celebrated Original BALTIMORE FIRE-PLACE HEATERS To warm upper and lower rooms. The handsomest, most economical Coal Stoves in the world. B. C. BIBB & SON Foundry Office and Salesrooms. 39 and 41 Light Street, Baltimore, Md. MARBLIZED SLATE MANTELS. Send for Circulars.

## SHAPING MACHINES.

Six in. stroke, with counter shaft and chuck, price \$135. ROYNTON & PLUMMER, Worcester, Mass.

## FOUND

SNOW'S BEST Water Wheel Governor, MANUFACTURED BY COHOES IRON FOUNDRY AND MACHINE CO., COHOES, N. Y.

MACHINISTS' TOOLS. NEW AND IMPROVED PATTERNS. Send for new illustrated catalogue. Lathes, Planers, Drills, &c. NEW HAVEN MANUFACTURING CO., New Haven, Conn.

SUPERIOR SUBSTITUTE FOR WOOD ENGRAVING. MOSS ENGRAVING CO. 535 PEARL STREET, COR. ELM, NEW YORK. Engravings of Portraits, Buildings, Landscapes, Machinery, Maps, Etc., for Newspapers, Books, Catalogues, Etc. Much cheaper than Wood Cuts. THE LARGEST ESTABLISHMENT OF THE KIND IN THE WORLD.

Steam Fitters' & Plumbers' Supplies. STURTEVANT'S FAN BLOWERS. ALBERT BRIDGES, 46 Cortlandt Street, New York.

Model Engines. Complete sets of CASTINGS for making small Model Steam Engines 1 1/2 in. bore, 3 in. stroke, price \$4 ditto 2 in. bore, 4 in. stroke, price \$10, same style as cut; Gear Wheels and Parts of Models. All kinds of Small Tools and Materials. Catalogue Free. GOODNOW & WIGHTMAN, 176 Washington Street, Boston, Mass.

BEATTY'S ORGANS, 18 useful stops, 5 sets reeds, only \$65. Pianos \$125 up. Full Catalogue FREE. Address BEATTY, Washington, N. J.

## RUBBER BACK SQUARE PACKING.

BEST IN THE WORLD. For Packing the Piston Rods and Valve Stems of Steam Engines and Pumps. Represents that part of the packing which, when in use, is in contact with the Piston Rod. A thin elastic back, which keeps the part B against the rod with sufficient pressure to be steam-tight, and yet creates but little friction. This Packing is made in lengths of about 20 feet, and of all sizes from 1/4 to 2 inches square. JOHN H. CHEEVER, Treas. NEW YORK BELTING & PACKING CO., 37 & 38 Park Row, New York.

Shafts, Pulleys, Hangers, Etc. Full assortment in store for immediate delivery. WM. SELLERS & CO., 79 Liberty Street, New York.

THE LARGEST MACHINERY DEPOT IN AMERICA. STANDARD MACHINERY FOR ALL PURPOSES. H. B. SMITH MACHINE CO. ESTABD 1849. 925 MARKET ST. PHILADELPHIA.

KEUFFEL & ESSER'S, NEW YORK. Hard Rubber Triangles, Irregular, Railroad and Ship Curves, Scales, Protractors, etc. Warranted to be correct. Send for Catalogues.

## WOODWORKING MACHINERY,

For Railroad Shops, Planing Mills, Car Builders, Cabinet, Carriage, Sash, Door, and Blind Makers. S. A. WOODS MACHINE CO., 172 High St., Boston; 91 Liberty St., N. Y.; 61 S. Canal St., Chicago.

## PATENTS SOLD

Patents Secured. Patent Stock Companies formed. Stock placed for Incorporated Companies. Good investments always on hand. Highest references given. Circulars Free. F. L. RICE, AIDIS & CO., Box 609, 733 Broadway, N. Y.

JES RACE ST. JAS MURDOCK JR. CINCINNATI BRASS COPPER SILVER WIRE, ROD, SHEET & TUBE IN THE THREE METALS. PRICE LIST FOR

## RUPTURE

cured without an operation or the injury trusses inflict by Dr. J. A. SHERMAN'S method. Office 251 Broadway, New York. His book, with Photographic likenesses of bad cases, before and after cure, mailed for 10c.

Steam and Hand Power. CLEM & MORSE, 411 & 413 Cherry St., Phila., Pa., and 108 Liberty St., New York.

DEAN BROTHERS, Steam Pump Works, INDIANAPOLIS, IND., Manufacturers of BOILER FEEDERS AND PUMPING MACHINERY, FOR ALL PURPOSES. Send for new Illustrated Catalogue. \$5 to \$20 per day at home. Samples worth \$5 free. Address STINSON & CO., Portland, Me.

FIRE BRICK TILE AND CLAY RETORTS ALL SHAPES BORGNER & O'BRIEN 23 25 ST. ABOVE RACE, PHILADELPHIA.

THE STEAM PUMPS MADE BY VALLEY MACHINE CO., EASTHAMPTON, MASS., Are the best in the world for Boiler Feeding and other purposes.

\$72 A WEEK. \$12 a day at home easily made. Costly outfit free. Address TRUE & Co., Augusta, Me.

INVALID ROLLING CHAIR. (RECLINING) A Painless boon to those who are unable to walk. H. A. H. Stephens, M. D., and hundreds of others use them. Send for Circular to FOLDING CHAIR CO., New Haven, Conn.

Pond's Tools, Engine Lathes, Planers, Drills, &c. DAVID W. POND, Worcester, Mass.

SCHENCK'S WOODWORKING MACHINERY. Planers and Matchers, Surfacers, Moulders, Tenoners, Engines, Boilers, etc., etc. BELCHER & BAGNALL, 40 Cortlandt St., New York.

The "SWEETLAND CHUCK." Universal, Ind p ndent, and Eccentric. Unexcelled for Accuracy, Strength, Durability, and Simplicity of construction. SWEETLAND & Co., 126 Union St., New Haven, Conn.

HEALD & MORRIS, formerly HEALD, SISCO & Co., Baldwinville, N. Y.

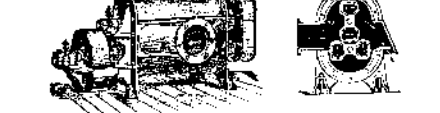
## NO MORE USE FOR OIL ON MACHINERY

Leffel Water Wheels, With recent improvements. Prices Greatly Reduced. 8000 in successful operation. FINE NEW PAMPHLET FOR 1879. Sent free to those interested. James Leffel & Co., Springfield, O. 110 Liberty St., N. Y. City.

BELT FRICTION CLUTCH For Gears, Shaft, Couplings, and Pulleys. W. OESTERLEIN, 13 Home St., Cincinnati, Ohio.

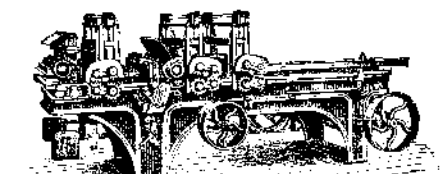
PATENT COLD ROLLED SHAFITING. The fact that this shafting has 75 per cent. greater strength, a finer finish, and is truer to gauge, than any other in use renders it undoubtedly the most economical. We are also the sole manufacturers of the CELEBRATED COLLINS' PAT. COUPLING, and furnish Pulleys, Hangers, etc., of the most approved styles. Price list mailed on application to JONES & LAUGHLINS, Try Street, 2d and 3d Avenues, Pittsburg, Pa. Corner Lake and Canal Sts., Chicago, Ill. Stocks of this shafting in store and for sale by FULLER, DANA & FITZ, Boston, Mass. Geo. Place Machinery Agency, 121 Chambers St., N. Y.

## ROOTS' NEW IRON BLOWER.



POSITIVE BLAST. IRON REVOLVERS, PERFECTLY BALANCED IS SIMPLER, AND HAS FEWER PARTS THAN ANY OTHER BLOWER. P. H. & F. M. ROOTS, Manuf'rs, CONNERSVILLE, IND.

S. S. TOWNSEND, Gen. Agt., { 6 Cortlandt St., 8 Day Street, } NEW YORK. WM. COOKE, Selling Agt., 6 Cortlandt Street, JAS. BEGGS & CO., Selling Agts., 8 Day Street, SEND FOR PRICED CATALOGUE.



WITHERBY, RUGG & RICHARDSON, Manufacturers of Patent Wood Working Machinery of every description. Facilities unsurpassed. Shop formerly occupied by R. Ball & Co., Worcester, Mass. Send for Catalogue.

## "The 1876 Injector."

Simple, Durable, and Reliable. Requires no special valves. Send for illustrated circular. WM. SELLERS & CO., Phila.

## GOLD PENS.

PENCILS, HOLDERS, CASES, &c. The CALLIGRAPHIC Pen. A GOLD PEN and RUBBER HOLDER, containing ink for several days' writing. Can be carried in the pocket. Always ready for use. A luxury for persons who care to preserve their individuality in writing. MABIE, TODD & BARD, 180 BROADWAY, NEW YORK. Send for Price-List. OUR GOODS ARE SOLD BY FIRST-CLASS DEALERS.

SHEPARD'S CELEBRATED \$60 Screw Cutting Foot Lathe. Foot and Power Lathes, Drill Presses, Scrolls, Circular and Band Saws, Saw Attachments, Chucks, Mandrels, Twist Drills, Dogs, Callipers, etc. Send for catalogue of outfits for amateurs or artisans. H. L. SHEPARD & CO., 331, 333, 335, & 337 West Front Street, Cincinnati, Ohio.

## Steel Castings

From 1/2 to 15,000 lb. weight, true to pattern, of unequalled strength, toughness, and durability. 15,000 Crank Shafts and 10,000 Gear Wheels of this steel now running prove its superiority over other Steel Castings. Send for circular and price list. CHESTER STEEL CASTINGS CO., 407 Library St., Philadelphia, Pa.

"RELIABLE" Engines a complete success. Prices still 40 per cent. below those of other makers. Unequaled for efficiency, simplicity, and durability. Prices from \$250 for 10 H. P., to \$550 for 50 H. P. All complete, with Governor, Pump and Heater. Address for circular, HEALD & MORRIS, formerly HEALD, SISCO & Co., Baldwinville, N. Y.

## THE Hancock Inspirator,

THE BEST BOILER FEEDER KNOWN. Over 17,000 in use on Locomotive, Stationary, Marine, and Portable Boilers. THE HANCOCK INSPIRATOR CO., BOSTON, MASS.

## NO MORE USE FOR OIL ON MACHINERY

Oiline Lubricating Compound, manu'd by HOLLAND & THOMPSON, Troy, N. Y. Avoids hot journals, dripping, and waste. Send for catalogue of Grease and Cups for all kinds of machinery.

Leffel Water Wheels, With recent improvements. Prices Greatly Reduced. 8000 in successful operation. FINE NEW PAMPHLET FOR 1879. Sent free to those interested. James Leffel & Co., Springfield, O. 110 Liberty St., N. Y. City.

BELT FRICTION CLUTCH For Gears, Shaft, Couplings, and Pulleys. W. OESTERLEIN, 13 Home St., Cincinnati, Ohio.

PATENT COLD ROLLED SHAFITING. The fact that this shafting has 75 per cent. greater strength, a finer finish, and is truer to gauge, than any other in use renders it undoubtedly the most economical. We are also the sole manufacturers of the CELEBRATED COLLINS' PAT. COUPLING, and furnish Pulleys, Hangers, etc., of the most approved styles. Price list mailed on application to JONES & LAUGHLINS, Try Street, 2d and 3d Avenues, Pittsburg, Pa. Corner Lake and Canal Sts., Chicago, Ill. Stocks of this shafting in store and for sale by FULLER, DANA & FITZ, Boston, Mass. Geo. Place Machinery Agency, 121 Chambers St., N. Y.