

Founded by Mathew Carey, 1785.

# BAIRD'S BOOKS FOR PRACTICAL MEN.

Our new and enlarged CATALOGUE OF PRACTICAL AND SCIENTIFIC BOOKS, 86 pages, 8vo; a Catalogue of Books on DYING, CALICO PRINTING, WEAVING, COTTON and WOOLLEN MANUFACTURE, 4to; Catalogue of a choice collection of PRACTICAL, SCIENTIFIC and ECONOMIC BOOKS, 4to; List of Books on STEAM and the STEAM ENGINE, MECHANICS, MACHINERY, and ENGINEERING, 4to. List of Important Books on METALLURGY, METALS, STRENGTH OF MATERIALS, CHEMICAL ANALYSIS, ASSAYING, etc. 4to; List of Books on MINING, MINING MACHINERY, COAL, etc. 4to; two Catalogues of Books and Pamphlets on SOCIAL SCIENCE, POLITICAL ECONOMY, BANKS, POPULATION, PAUPERISM, and kindred subjects; a Catalogue of recent additions to our stock of PRACTICAL SCIENTIFIC and TECHNICAL BOOKS; as well as a List of LEADING BOOKS on METAL MINING, METALLURGY, MINERALOGY, ASSAYING, and CHEMICAL ANALYSIS, sent free to any one who will forward his address.

HENRY CAREY BAIRD & CO., Industrial Publishers, Booksellers, and Importers, 810 WALNUT STREET, PHILADELPHIA.



## STEAM PUMPS.

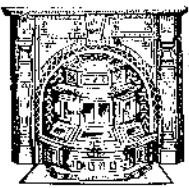
HENRY R. WORTHINGTON,

239 Broadway, N. Y., 83 Water St., Boston, 701 Market St., St. Louis, Mo.

THE WORTHINGTON PUMPING ENGINES FOR WATER WORKS—Compound, Condensing, or Non-Condensing. Used in over 100 Water-Works Stations.

WORTHINGTON STEAM PUMPS of all sizes and for all purposes. Prices below those of any other steam pump in the market.

WATER METERS. OIL METERS.



**BIBB'S** Celebrated Original BALTIMORE FIRE-PLACE HEATERS To warm upper and lower rooms. The handsomest, most economical Coal Stoves in the world. **B. C. BIBB & SON** Foundry Office and Salesrooms, 39 and 41 Light Street, Baltimore, Md. MARBLEIZED SLATE MANTELS. Send for Circulars.

**VENTILATION.**—PARTIES HAVING charge of churches, schools, etc., or any one in need of ventilation, try the Wing Fan Ventilator, the best. See Sci. Am., Jan. 31, 1878, or send for circulars. L. J. Wing or Simons Mfg. Co., 30 CHURCH ST., New York.

**14 STOP ORGANS, SUB BASS** and Oct. Coupler, 4 Set Reeds, \$415. Pianos, \$125 and upwards, sent on trial, catalogue free. Address DANIEL F. BEATTY, Washington, N. J.

**SNOW'S BEST Water Wheel Governor,** MANUFACTURED BY COHOES IRON FOUNDRY AND MACHINE CO., COHOES, N. Y.

**JOHN R. WHITLEY & CO.** European Representatives of American Houses, with First-class Agents in the principal industrial and agricultural centers and cities in Europe. London, 7 Poultry, E. C. Paris, 8 Place Vendôme. Terms on application. J. R. W. & Co. purchase Paris goods on commission at shippers' discounts.

**Horizontal Steam Engines,** For Economy, Durability, and Superior Design, Complete in Every Respect, ADDRESS LAMBERTVILLE IRON WORKS, LAMBERTVILLE, N. J.

**The George Place Machinery Agency** Machinery of Every Description, 121 Chambers and 103 Reade Streets, New York.

**Do Your Own Printing** \$3 PRESS prints cards, labels, etc. (Self-inked) Larger sizes for larger work. For 14 or young. Great money saver. A paying business anywhere for all repairs time. Send two stamps for a catalogue of all sizes Presses, Type, Cards, Paper, &c., to the Manufacturers **ELSEY & CO.**, Meriden, Conn.

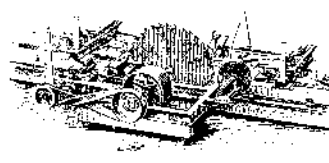
**CENTENNIAL AND PARIS MEDALS.** Mason's Friction Clutches and Elevators. "New and Improved" Patterns. VOLNEY W. MASON & CO., Providence, R. I., U. S. A.

**STEAM PUMPS.** THE NORWALK IRON WORKS CO., SOUTH NORWALK, CONN.

**GRISCOM & CO'S** VALVE REFITTING MACHINE POTTSVILLE, PA.

**WHEAT** Dealers make Money with W. T. SOULE & CO., 130 La Salle Street, Chicago, Ill. Write for particulars.

**ANY ONE** wishing to make a cheap and perfect Filter for rain water, for use or for sale, should send a postal, for particulars, to R. BAUMFELDER, 38 W. 4th St., Cincinnati, O.



**THE STEARNS MANUFACTURING CO.,** ERIE, PENNSYLVANIA, make a specialty of improved **SAW MILL MACHINERY.** Designed in its construction for producing lumber economically and rapidly. Plans and estimates for Mills of any capacity furnished on request. Also build **ENGINES, BOILERS, AND MACHINERY IN GENERAL.**

THE LARGEST ENGRAVING ESTABLISHMENT IN THE WORLD.

L. SMITH HOBART, President. JOHN HARPER BONNELL, Vice-Prest. JOHN HASTINGS, Treasurer. A. R. HART, Secretary & Supt.



**RELIEF PLATES IN TYPE METAL,** A Superior Substitute for Wood-Cuts, at Low Prices.

This Company has been in operation a little more than eight years. Within this time its business has increased, until now it greatly exceeds that of any other engraving establishment in the world. Recent changes in the Company have enabled it to produce the most perfect work it has ever done. The methods now in use, and the high skill employed, are a sure pledge of continued excellence. All persons desiring illustrations for Books, Newspapers, Advertisements, or for any other purpose, will receive prompt attention, and their work will be executed in superior style. Send stamp for illustrated circular.

728 CHESTNUT STREET, PHILADELPHIA, PA. BRANCH OFFICES: 75 CALLE DE AGUIAR, HAVANA, CUBA.

**THE BLAKE "LION AND EAGLE" CRUSHER,** A patented improvement of the former "New Pattern" Blake machine. Has much greater efficiency than the old. It requires only about half the power to drive, and is transported at much less expense (the size most used weighing several thousand pounds less than the unimproved machine). It requires less than half the time in oiling and other manipulation, and less than half the expense for repairs. Address **E. S. BLAKE & CO.,** Pittsburgh, Pa., Sole Proprietors and Manufacturers.

**BUCK** VALLEY MACHINE CO., EASTHAMPTON, MASS. **ET PLUNGER STEAM PUMPS.** FOR EVERY DUTY.

**RUBBER BACK SQUARE PACKING.** BEST IN THE WORLD. For Packing the Piston Rods and Valve Stems of Steam Engines and Pumps. B represents that part of the packing which, when in use, is in contact with the Piston Rod. A the elastic back, which keeps the part B against the rod with sufficient pressure to be steam-tight, and yet creates but little friction. This Packing is made in lengths of about 20 feet, and of all sizes from 1/4 to 2 inches square. **JOHN H. CHEEVER, Treas. NEW YORK BELTING & PACKING CO.,** 37 & 38 Park Row, New York.

**THE WALLACE DIAMOND CARBONS OF ELECTRIC LIGHTS** MAN'FD. FOR THE ELECTRICAL SUPPLY CO., 109 LIBERTY STREET, NEW YORK.

**Forster's Rock & Ore Breaker and Combined Crusher and Pulverizer.** The simplest machine ever devised for the purpose. Parties who have used it constantly for six years testify that it will double the work of any other Crusher, with one-third the Power, and one-half the expense for keeping in repair. The smaller sizes can be run with Horse Power. Address **TOTTEN & CO.,** Pittsburgh, Pa.

**WANTED, AGENTS.** We want agents to sell the world renowned Wilson Oscillating Shuttle Sewing Machines in unoccupied territory, to whom we are prepared to offer extraordinary inducements whereby from one to six thousand dollars a year can be made. There never was a better time to engage in the sale of sewing machines, as all the machines made in the past twenty years are wearing out, and must be replaced. For terms and further particulars, address **WILSON SEWING MACHINE CO.,** CHICAGO, ILL.

**SHEPARD'S CELEBRATED \$50 Screw Cutting Foot Lathe.** Foot and Power Lathes, Drill Presses, Scrolling, Circular and Band Saws, Saw Attachments, Chucks, Mandrels, Twist Drills, Dogs, Calipers, etc. Send for catalogue of outfits for amateurs or artisans. **H. L. SHEPARD & CO.,** 331, 333, 335, & 337 West Front Street, Cincinnati, Ohio.

**Pond's Tools,** Engine Lathes, Planers, Drills, &c. **DAVID W. POND, Worcester, Mass.**

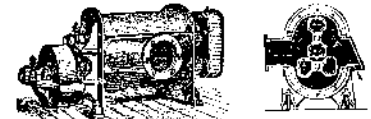
**TELEPHONE** Works 1 mile. Price \$4. Pat. & Circulars free. **HOLCOMB & CO.,** Mallet Creek, Ohio.

**TOOLS** for Machinists, Carpenters, Amateurs, Jewellers, Mold-Makers, Blacksmiths, etc. Send for Catalogue, and state what kind of Tools you require. **TALLMAN & McFADDEN,** 607 Market St., Philadelphia, Pa.

**Steel Castings** From 1/4 to 15,000 lb. weight, true to pattern, of unequalled strength, toughness, and durability. 15,000 Crank Shafts and 10,000 Gear Wheels of this steel now running prove its superiority over all other Steel Castings. Send for circular and price list. **CHESTER STEEL CASTINGS CO.,** 407 Library St., Phila, Pa.

**THE BEST THING YET.** THE Fitchburg Acoustic Telephone Co.'s New Metallic Telephone. Send for Circulars. **FITCHBURG ACOUSTIC TELEPHONE CO.,** Box 73, Old City, Fitchburg, Mass.

## ROOTS' NEW IRON BLOWER.



**POSITIVE BLAST.** IRON REVOLVERS, PERFECTLY BALANCED IS SIMPLER, AND HAS FEWER PARTS THAN ANY OTHER BLOWER. **P. H. & F. M. ROOTS, Manuf'rs,** CONNERSVILLE, IND.

S. S. TOWNSEND, Gen. Agt., 6 Cortlandt St., NEW YORK. WM. COOKE, Selling Agt., 6 Cortlandt Street, NEW YORK. JAS. BEGGS & CO., Selling Agts., 8 Dey Street, NEW YORK.

**"RELIABLE"** Engines a complete success. Prices still 40 per cent. below those of other makers. Unequaled for efficiency, simplicity, and durability. Prices from \$50 for 10 H. P. to \$400 for 30 H. P. All complete, with Governor, Pump, and Heater. Address, for circular, **HEALD, SISCO & CO.,** Baldwinsville, N. Y.

## ROOFING.

For steep or flat roofs. Applied by ordinary workmen at one-third the cost of tin. Circulars and samples free. Agents Wanted. **T. NEW,** 32 John Street, New York.

SPUTTERING CURVED by Bates' Appliances. Send for description to **STIMPSON & CO.,** Box 2236, New York.

## PATENT COLD ROLLED SHAFTING.

The fact that this shafting has 75 per cent. greater strength, a finer finish, and is truer to gauge, than any other in use renders it undoubtedly the most economical. We are also the sole manufacturers of the CELEBRATED COLLINS' PAT. COUPLING, and furnish Pulleys, Hangers, etc., of the most approved styles. Price list mailed on application to **JONES & LAUGHLINS,** Try Street, 2d and 3d Avenues, Pittsburg, Pa. 190 S. Canal Street, Chicago, Ill. Stocks of this shafting in store and for sale by **FULLER, DANA & FOSTER,** Boston, Mass. Geo. Place Machinery Agency, 121 Chambers St., N. Y.

## PATENTS

CAVEATS, COPYRIGHTS, LABEL REGISTRATION, ETC. Messrs. Munn & Co., in connection with the publication of the SCIENTIFIC AMERICAN, continue to examine Improvements, and to act as Solicitors of Patents for Inventors.

In this line of business they have had OVER THIRTY YEARS' EXPERIENCE, and now have unequalled facilities for the Preparation of Patent Drawings, Specifications, and the Prosecution of Applications for Patents in the United States, Canada, and Foreign Countries. Messrs. Munn & Co. also attend to the preparation of Caveats, Registration of Labels, Copyrights for Books, Labels, Reissues, Assignments, and Reports on Infringements of Patents. All business intrusted to them is done with special care and promptness, on very moderate terms.

We send, free of charge, on application, a pamphlet containing further information about Patents, and how to procure them; directions concerning Labels, Copyrights, Designs, Patents, Appeals, Reissues, Infringements, Assignments, Rejected Cases, Hints on the Sale of Patents, etc.

**Foreign Patents.**—We also send, free of charge, a Synopsis of Foreign Patent Laws, showing the cost and method of securing patents in all the principal countries of the world. American inventors should bear in mind that, as a general rule, any invention that is valuable to the patentee, in this country is worth equally as much in England and some other foreign countries. Five patents—embracing Canadian, English, German, French, and Belgian—will secure to an inventor the exclusive monopoly to his discovery among about ONE HUNDRED AND FIFTY MILLIONS of the most intelligent people in the world. The facilities of business and steam communication are such that patents can be obtained abroad by our citizens almost as easily as at home. The expense to apply for an English patent is \$75; German, \$100; French, \$100; Belgian, \$100; Canadian, \$50.

**Copies of Patents.**—Persons desiring any patent issued from 1836 to November 20, 1866, can be supplied with official copies at reasonable cost, the price depending upon the extent of drawings and length of specifications.

Any patent issued since November 20, 1866, at which time the Patent Office commenced printing the drawings and specifications, may be had by remitting to this office \$1.

A copy of the claims of any patent issued since 1836 will be furnished for \$1.

When ordering copies, please to remit for the same as above, and state name of patentee, title of invention, and date of patent. A pamphlet, containing full directions for obtaining United States patents, sent free. A handsomely bound Reference Book, gilt edges, contains 140 pages and many engravings and tables important to every patentee and mechanic, and is a useful handbook of reference for everybody. Price 25 cents, mailed free.

Address **MUNN & CO.,** Publishers SCIENTIFIC AMERICAN, 37 Park Row, New York. BRANCH OFFICE—Corner of 1st and 7th Streets, Washington, D. C.

**PORTER MANUF'G CO.** The New Economizer, the only Agricultural Engine with Return Flue Boiler in use. Send for circular to **PORTER MFG. CO.,** Limited, Springfield, N. Y. G. G. YOUNG, Gen. Agt., 42 Cortlandt St., New York.

**SPARE THE CROTON AND SAVE THE COST.** Driven or Tube Wells furnished to large consumers of Croton and Ridgewood Water. **WM. D. ANDERSON & BRO.,** 235 Broadway, N. Y., who control the patent for Green's American Driven Wells.

**EXTRA BARGAINS.** Town rights, \$10; county, \$25. Best novelty yet manufactured. If you want to make money, address, with stamp, **J. H. MARTIN,** Hartford, N. Y.

**Leffel Water Wheels,** With recent improvements. **Prices Greatly Reduced:** 8000 in successful operation. FINE NEW PAMPHLET FOR 1879. Sent free to those interested. **James Leffel & Co.,** Springfield, O. 110 Liberty St., N. Y. City.

**TIDY SPOOL CASE.** Something new for Sewing Machines, Ladies' Work Basket, or Pocket. Sample by mail 25 cents, or amount in postage. Address **TERRELL & TRAVIS,** Manufacturers, Box 123, Yonkers, Westchester County, N. Y.

**Shafts, Pulleys, Hangers, Etc.** Full assortment in store for immediate delivery. **WM. SELLERS & CO.,** 79 Liberty Street, New York.

**ALAND'S** Silent Injector, Blower & Exhauster. Apply to **S. ALAND,** Rome, Oneida Co., N. Y.