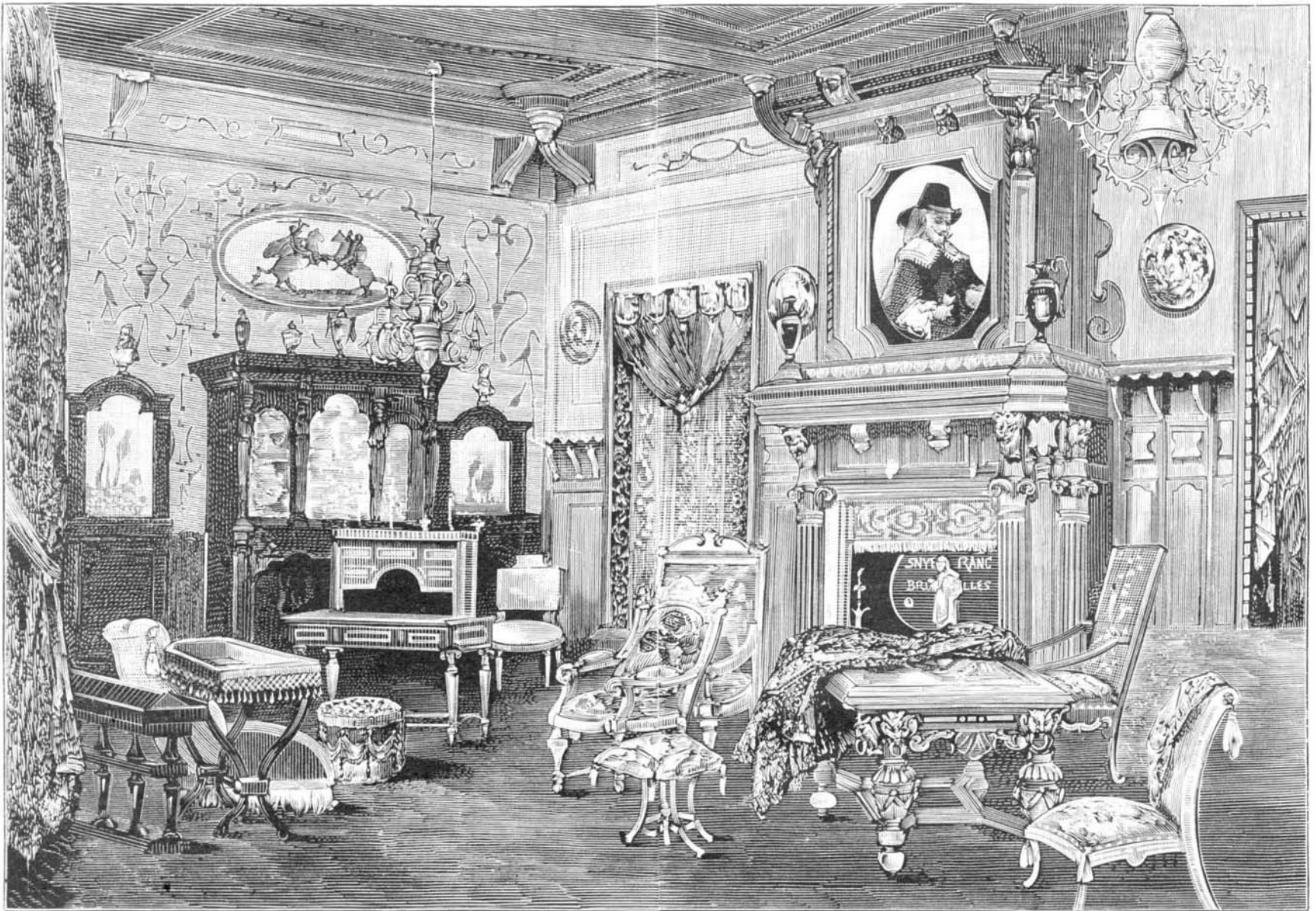


PARIS EXHIBITION.

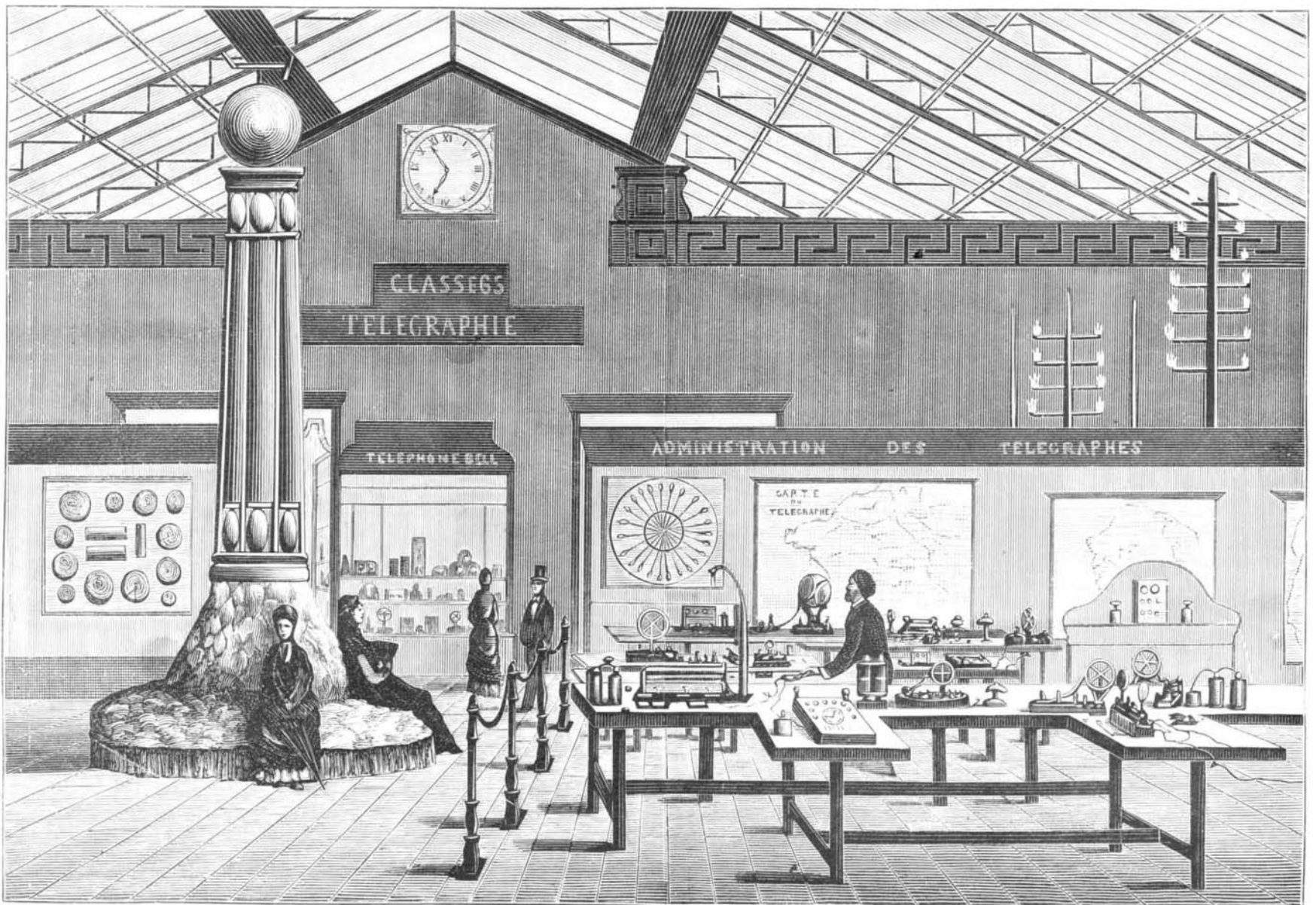
We give on this and the opposite page, four interior views of different departments at the Paris Exhibition. The first affords an idea of Belgian furniture and interior

decorations; the second is the department devoted to telegraphy; the third, French upholstery and interior decorations, and the fourth is the department of carpets, tapestry, etc., in the French section.

IMPERVIOUS RUBBER TUBING.—It is asserted that India rubber tubing may be made entirely impassable to coal gas by painting it over with a solution of silicate of sodium, otherwise known as "water glass."



BELGIAN FURNITURE AT THE EXHIBITION.



THE FRENCH TELEGRAPHIC ANNEX.

Asphalt Pavements.

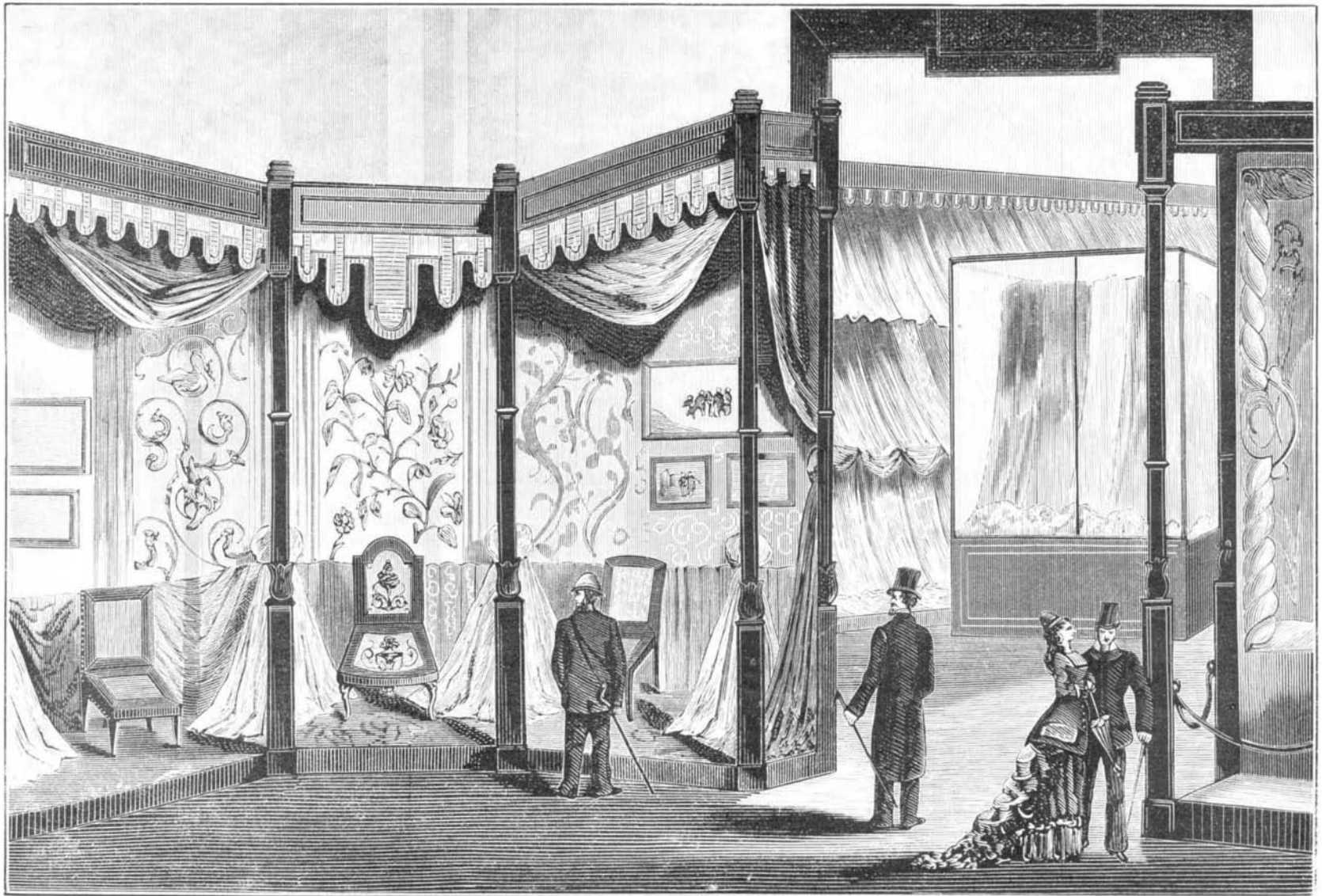
Berlin has attempted to introduce asphalt pavements upon a few of her best streets. In some respects it seems of doubtful success. The roadway is very smooth and hard, pleas-

ant to ride upon, and will prove a great saving in the expense for running stock, but also very expensive in the matter of horse flesh. When wet it is so slippery that few horses are able to traverse it with safety, and on every rainy day an

immense number of loosely reined horses "take a tumble." The most recent victim was Herr Wachtel, the tenor singer, whose horses slipped, ran away, and Wachtel, attempting to jump out, was quite badly injured by his fall.



UPHOLSTERERS' AND DECORATORS' WORK, FRENCH SECTION.



CARPETS, TAPESTRY, ETC. FRENCH SECTION.