

THE VALIDITY OF PATENTS.

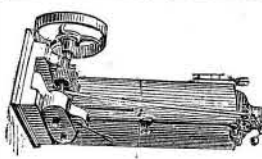
The inexperienced purchaser of a patent does not generally appreciate the importance of having its claims examined, and their validity and scope defined by some person experienced in such matters, before parting with his money. It is not unusual for the assignee, just as he is commencing the manufacture of articles under his recently purchased patent, to find that it is an infringement upon some previously issued patent, and that he has not only made a worthless investment, but that he is likely to get mulcted in damages if he proceeds with his manufacture. Cases are continually coming to our knowledge wherein parties have made purchases in good faith, and paid considerable sums of money on the assurances of the patentee and a mere glance at the patent, presuming that all that the drawing of the invention showed was protected by the claims, when, in fact, the point covered was almost infinitesimal. Another manner in which purchasers are sometimes deceived is that the claims, although broad enough and worded properly to cover the invention, contain a single element protected by some prior patent, which covers the very part in the new machine which is necessary to insure its efficiency. The Howe sewing machine patent illustrates this. It protected but little that any of the manufacturers cared to use, except the one small part essential to all sewing machines; and all manufacturers had to pay Howe a royalty, and he derived from that apparently trivial item an immense income.

We therefore recommend any person who is about to purchase a patent, or about to commence the manufacture of any article under a license, to have the patent carefully examined by a competent party, and to have a research made in the Patent Office to see what the condition of the art was when the patent was issued. He should also see that the claims are so worded as to cover all the inventor was entitled to when his patent was issued; and it is still more essential that he be informed whether it is an infringement, as above suggested, or not. Parties desiring to have such searches made can have them done through the Scientific American Patent Agency, by giving the date of the patent and stating the nature of the information desired. For further information, address

MUNN & CO.,
37 PARK ROW, New York.

Advertisements.

Inside Page, each insertion --- 75 cents a line.
Back Page, each insertion --- \$1.00 a line.
Engravings may head advertisements at the same rate per line, by measurement, as the letter press. Advertisements must be received at publication office as early as Friday morning to appear in next issue.

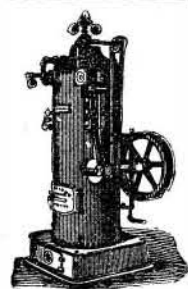


CALLAHUE'S
"Little Giant"
STEAM ENGINE.
Most durable, cheap, compact, and economical engine. Send for circular. A. C. CALLAHUE & CO., Morrisania Station, New York City.

PATENT COLD ROLLED SHAFTING.

The fact that this shafting has 75 per cent greater strength, a finer finish, and is truer to gauge, than any other in use, renders it undoubtedly the most economical. We are also the sole manufacturers of the CELEBRATED COLLINS' PAT. COUPLING, and furnish Pulleys, Hangers, etc., of the most approved styles. Price list mailed on application to

Try Street, 2nd and 3rd Avenues, Pittsburgh, Pa.
190 S. Canal Street, Chicago, Ill.
Stocks of this shafting in store and for sale by
FULLER, DANA, & FITZ, Boston, Mass.
GEO. PLACE & CO., 121 Chambers St., N. Y.
PERCE & WHEALING, Milwaukee, Wis.



THE TRADE ENGINE.

Noiseless in operation—Perfect in workmanship—all light parts of Cast Steel.
Every Engine indicated, and valve corrected to give the highest attainable results.
Warranted superior to any semi-portable engine in the market.
Send for Price List and Circular.
HERMANN & HERCHEL-RODE MFG. CO.,
Dayton, Ohio.

STEAM ENGINES FOR SALE.

I offer the following very superior Todd & Rafferty Engines for sale at greatly reduced prices: One 18x36, one 14x18 (sawmill), one 12x14, one 10x24, one 8x20, one 7x16, one 5x10 on legs, one 5x12, portable one 5x16, double hoisting; all first class and entirely new. Also various sizes and kinds of Boilers. I will also furnish specifications and estimates for all kinds of rope and bagging machinery. Send for descriptive circular and price. Address

J. C. TODD,
10 Barclay St., New York, or Paterson, N. J.

A NEW DEPARTURE

Salesmen wanted in every city and town in the U. S. AND CANADA to introduce our Old and Simple MANUFACTURES. \$15 PER MONTH Hotel and Traveling Expenses paid. Apply by letter or in person to S. A. ORANT & CO., 2, 4, & 6 Home St., Cincinnati, O.

EAGLE FOOT LATHES,

With Scroll and Circular Saw Attachments, Slide Rest, Tools, &c.; also Small Engine Lathes, Metal Hand Planers, &c. Neatest designs, superior finish. Low Prices. Our new Catalogue describes these and every tool necessary for the Amateur or Artisan. Send for it.
WM. L. CHASE & CO.,
95 & 97 Liberty St. New York.

Gardiner's Pat. Centring & Squaring Attachment

FOR LATHES.
R. E. STATE & CO., Springfield, Ohio.

Second Hand Machinery,

NOW IN STORE: One 6 in. Shaping Machine, Ezra Gould, maker. One 8 in. Shaping Machine, Hewes & Phillips, makers. One 16 in. x6 ft. Screw Cutting Lathe, L. W. Pond, maker. One 18 in. x6 ft. Screw Cutting Lathe, D. W. Pond, maker. Two 15 in. x6 ft. Screw Cutting Lathes, Pratt & Whitney, makers. One 12 in. x6 ft. Screw Cutting Lathe, chain feed. Five No. 1 Upright Drills, L. W. Pond, maker. One 5 ft. Radial Drill, Wm. B. Bement & Son, makers. One 24 in. x5 ft. Planer, New Haven Mfg. Co., makers. One 24 in. x5 ft. Planer, C. Whitcomb & Co., makers. One 28 in. x8 ft. Planer, C. Whitcomb & Co., makers. One 2 in. Bolt Cutter, Wm. Sellers & Co., makers. One 16 in. x5 ft. Pulley Feed Lathe, Jones, Lamson & Co., makers. One 13 in. x5 ft. Pulley feed Lathe, L. W. Pond, maker. Three 4 spindle Drills, Ames Mfg. Co., makers. One 2 spindle Drill, Pratt & Whitney, makers. One single spindle Profiling Machine, Windsor Mfg. Co., makers. One Face Milling Machine, Jones, Lamson & Co., makers. One Chain Feed Screw Cutting Lathe, 12 in. swing, 6 ft. bed. One Hand Lathe, 12 in. swing x 4 ft. bed. Two 2 spindle Bolt Cutters, cuts from 1/4 in. to 1 1/2 in., with taps and dies. One 2,000 lbs. Ferris & Miles Steam Hammer. One 1,000 lbs. Ferris & Miles Steam Hammer. One Wm. B. Bement & Son 4 ft. Bolt Cutter. Two Double Nut Tapping Machines. One single spindle Chute Bolt Cutter, cuts 1/2 in. to 1 in. One Punching Machine, punches 1/2 in. hole through 3-16 in. iron. Also, list of Bridge Building Machinery, advertised July 9th. For Prices and Particulars, apply to

GEORGE PLACE, 121 Chambers & 103 Reade Sts., New York.

AIR COMPRESSORS

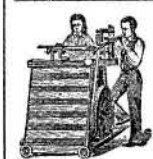
FOR ALL PURPOSES.
A SPECIALTY OF HEAVY PRESSURES.
THE NORWALK IRON WORKS CO.,
SOUTH NORWALK, CONN.



Corrugated Iron.
Iron Buildings, Roofs,
Shutters, Doors, etc.
MOSELY IRON BRIDGE
AND ROOF COMPANY,
Office, 5 Day Street,
New York.
Send for circulars.

FILES.

The very best in the United States are those of the old and well-known
"WHEELER, MADDEN & CLEMSON"
brand. They may be had from dealers everywhere; or, in large quantities, direct from the manufacturers.
MADDEN & COCKAYNE FILE CO.,
Send for Price-list
Middletown, N. Y.

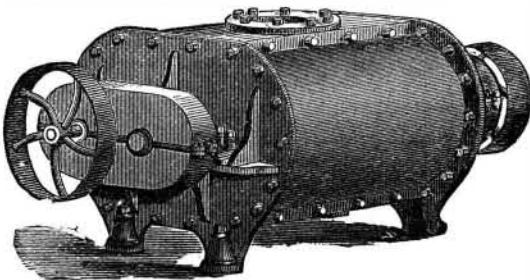


JOYFUL News for Boys and Girls!!
Young and Old!!! A NEW IN-
VENTION just patented for them!
Fret Sawing, Scroll Sawing,
Turning, Boring, Drilling, Grind-
ing, Polishing! All on one Cab-
inet Lathe, on Wheels.
Price from \$5 to \$30. For Pamphlet,
address
EPHRAIM BROWN,
Lowell, Mass.

STEEL CASTINGS.

Solid and Homogeneous. Guaranteed tensile strength, 25 tons to square inch. An invaluable substitute for expensive forgings, or for Cast Iron requiring great strength. Send for circular and price list to CHESTER STEEL CASTING CO., Evelyn St., Philadelphia, Pa.

ROOTS' FORCE BLAST BLOWER.



FIRST PREMIUM
AWARDED
AT
PARIS AND VIENNA.

SPEED ONLY 100 TO 250 REV. PER M. SAVES
HALF THE POWER REQUIRED FOR FAN.

P. H. & F. M. ROOTS, Manuf'rs, CONNERSVILLE, IND.
S. S. TOWNSEND, Gen'l Ag't, 31 Liberty St., NEW YORK.

PATENT SCROLL SAWS.

Our specialty is Scroll and Band Saws. Over 300 Machines in use. SUPERIOR TO ALL AND LESS PRICE.
CORDEMAN, EGAN & CO.,
Cor. 2nd and Central Ave., Cincinnati, O.

SOLID WEALTH!

\$600,000 IN GIFTS!

Grandest Scheme ever Presented to the Public!
A FORTUNE FOR ONLY \$12.

THE KENTUCKY

CASH DISTRIBUTION COMPANY

authorized by a special act of the Kentucky Legislature, for the benefit of the Public Schools of Frankfort, will have the First of their series of Grand Drawings at
MAJOR HALL, in the CITY OF FRANKFORT, KY.,

THURSDAY, AUGUST 31, 1876,

on which occasion they will distribute to the ticket holders the immense sum of

\$600,000!

Thos. P. Porter, Ex-Gov. Ky., Gen'l Manager

POSITIVELY NO POSTPONEMENT!

One Grand Cash Gift	\$100,000
One Grand Cash Gift	50,000
One Grand Cash Gift	25,000
One Grand Cash Gift	10,000
One Grand Cash Gift	5,000
50 Cash Gifts of \$1,000 each	50,000
100 Cash Gifts of 500 each	50,000
100 Cash Gifts of 400 each	40,000
100 Cash Gifts of 300 each	30,000
200 Cash Gifts of 200 each	40,000
600 Cash Gifts of 100 each	60,000
10,000 Cash Gifts of 12 each	120,000
Total, 11,156 Gifts, All Cash	600,000

PRICE OF TICKETS:
Whole tickets, \$12; Halves, \$6; Quarters, \$3; 9 Tickets, \$100, 27 1/2 Tickets, \$300; 46 2/3 Tickets, \$500; 95 1/3 Tickets, \$1,000. 100,000 Tickets at \$12 each.
Hon. E. H. Taylor, Mayor of Frankfort, the entire board of City Councilmen, Hon. Alvin Davall, late Chief Justice of Kentucky, and other distinguished citizens, together with such disinterested persons as the ticket holders present may designate, will superintend the drawing.
Remittances can be made by Express, Draft, Post-office Money order or Registered Letter. Made payable to KENTUCKY CASH DISTRIBUTION COMPANY.
All communications, orders for Tickets, and applications for Agencies should be addressed to

HON. THOS. P. PORTER,
General Manager, Frankfort, Ky.
or G. W. BAILEY & CO.,
General Eastern Agents, 710 Broadway, N. Y.

THE Bigelow Engine,

The Cheapest and Best Portable Engine offered to the Public.

Price, 4 Horse Power	\$300
" 6 "	400
" 8 "	475
" 10 "	545
" 12 "	720
" 15 "	900

Price of Stationary Engines:
Without Boilers.

4 Horse Power	\$150
6 "	175
7 to 8 1/2 Horse Power	225
12 to 15 "	300

Send for Illustrated Circular and Price List.

H. B. BIGELOW & CO.,
New Haven, Conn.

FOR SALE—A New Bogardus No. 2 Mill for dry substances; also, 4 sets of plates. Price \$100, or less than half cost.

J. C. & C. C. PECK,
West Bloomfield, N. Y.

Lathes, Planers, Shapers, Drills,
Gear & Bolt Cutters, &c. E. GOULD, Newark, N. J.

J. M. CARPENTER

MANUFACTURER OF FIRST CLASS TAPS AND
DIES, Pawtucket, R. I.

WANTED Men to travel and sell goods to
dealers. No peddling. \$80 a
month, hotel and traveling expenses
paid. MONITOR MANUFACTURING CO., Cincinnati, Ohio.

NORWICH University Scientific and Military School,
Northfield, Vt. Address Prof. CHARLES DOLE.

REVERSIBLE HOISTING ENGINE

FOR ALL PURPOSES.
Cheap, simple, durable and effective.
LIDGEBROOK MFG CO., 165 Pearl St., N. Y.

\$50.00 SCREW-CUTTING FOOT LATHES—
Foot Drill Presses. Send for Circular to
H. L. SHEPARD, Cincinnati, O.

MANUFACTURERS AND PATENTEES hav-
ing useful articles, suitable for the Hardware Trade
and desiring aid to manufacture and introduce the same
address P. B. PRATT, care PRATT & CO., Buffalo, N. Y.
Small samples may be sent, same to be returned if desired.

IRON PLANING MACHINES A SPECIALTY.
C. WHITCOMB & CO., M'f'rs, Worcester, Mass.

SAFETY HOISTING
OTIS' Machinery.
OTIS, BROS. & CO.
No. 348 BROADWAY, NEW YORK.

NO MONEY
We will start you in a business you
can make \$50 a week without capital
easy and respectable for either sex
Agents' Supply Co., 261 Bowery, N. Y.

MACHINERY OF IMPROVED STYLES FOR
making SHINGLES, HEADING, and STAVES;
also GUAGE LATHES for TURNING HANDLES. Sole
makers of Laws Pat. Shingle and Heading Sawing Ma-
chine. Address TREVOR & CO., Lockport, N. Y.

FRICITION HOISTERS.
FRICITION HOISTING ENGINES.
FORGE HAMMERS AND FRICTION D. FRISBIE & CO.
SPECIALTY. PULLEYS NEW HAVEN, CONN.

PUNCHING For the Best and Cheapest,
and address THE STILES
DROPPERS. PARKER PRESS CO.,
MIDDLETOWN, CONN.

BLOSSOM ROCK, HARBOR OF SAN FRANCISCO.
Full Account of its Removal, Method and Cost. By
Col. R. S. Williamson. With 25 illustrations, diagrams,
&c. Presenting valuable information for engineers,
Price 10 cents. Contained in SCIENTIFIC AMERICAN
SUPPLEMENT, No. 24. To be had at this Office and of
all News Dealers.

25 FANCY CARDS, new styles, with name, 10c. post-
paid. J. B. HUSTED, Nassau, Renss. Co., N. Y.

Pond's Tools.

ENGINE LATHES, PLANERS, DRILLS, &c.
Send for Catalogue. DAVID W. POND, Successor to
LUCIUS W. POND, Worcester, Mass.

\$5 to \$20 per day at home. Samples worth \$1
free. STINSON & CO., Portland, Me.

WATER SUPPLY FOR TOWNS AND VIL-
LAGES. By Clarence Delafield, C.E. A concise
and valuable Report, showing the Cost and Merits of the
Various Systems—Discussion of the Holly System, its
Merits and Defects—The Reservoir System, with Pumps,
Cost, and Advantages—Results Obtained and Economy
of Use of Various Systems in Different Towns, with
Names and Duty Realized, Facts and Figures to enable
Town Committees to judge for themselves as to the sys-
tem best suited for their wants—The Best Sources of
Water Supply—Water-Bearing Rocks—Artesian Wells,
their feasibility, excellence, and cost of boring—Impor-
tance of Pure Water—How Surface Water is Rendered
Impure—Cost of Water Pipes, from 2 to 12 inches diam-
eter, for Towns, including laying, all labor, materials,
gates, joints, etc.—Estimates of Income and Water
Rates for Supply of 1,000 Buildings. Price 10 cents.
Contained in SCIENTIFIC AMERICAN SUPPLEMENT,
No. 27. To be had at this Office and of all News Dealers.

PROPOSALS FOR THE MANUFACTURE OF
Patent Joiners' Clamps (to be made of iron) will be
received by the undersigned. Models furnished. Address
JACOB HUBNER, Room 7, Temple Building, St. Louis, Mo.

Stubs' Files, Tools & Steel.
Machinists' Fine Tools, Jewelers' and
Engravers' Supplies, Lathes, Chucks,
Vises, Taps and Dies, Reamers, Morse
Drills, Files, and small Tools of all kinds,
for amateurs or practical workmen. Hub-
berts' French Emery Paper, Grobet's
Swiss Files, Bracket Saws, etc. Agent
for the Almond Drill Chuck. Best and
cheapest in the market. Price \$5.00.
J. M. MONTGOMERY,
105 Fulton St., New York.

\$77 A WEEK to Agents, Old & Young, Male & Fe-
male, in their locality. Terms & OUTFIT FREE.
Address P. O. VICKERY & CO., Augusta, Me.

SHAFTS, PULLEYS, HANGERS
COUPLINGS ETC.

In Stock, and for Sale by
WILLIAM SELLERS & CO.,
Philadelphia, and 79 Liberty St., New York.
Price lists and pamphlets on application.

BLAKE'S PATENT
Stone and Ore Breaker
Crushes all hard and Brittle Substances to
any required size. Also, any kind of
STONE for ROADS and for CONCRETE, &c.
Address BLAKE CRUSHER CO.,
New Haven, Conn.

The HOADLEY
PORTABLE STEAM ENGINE.
WITH AUTOMATIC CUT-OFF REGULATOR
AND BALANCED VALVE.
THE BEST & MOST ECONOMICAL ENGINE MADE
SEND FOR CIRCULAR.
The J. C. HOADLEY CO., LAWRENCE, MASS.
STATE WHERE YOU SAW THIS.

VELOCIPEDE CARRIAGES, OF LIGHT CON-
struction, fast speed. Worked by hand cranks,
also by foot pedals. Illustrated in SCIENTIFIC AME-
RICAN SUPPLEMENT No. 8. To be had at this office
and of all news agents. Price 10 cents.

\$250
A MONTH—Agents wanted every-
where. Business honorable and first
class. Particulars sent free. Address
J. WORTH & CO., St. Louis, Mo.

HOW TO MAKE SPIRAL SPRINGS. By
Joshua Rose. With three engravings of the tools,
which are easily made, and complete practical directions
for working, including Hardening and Tempering. Price
10 cents. Contained in SCIENTIFIC AMERICAN SUPPLE-
MENT No. 20. To be had at this office and at all News
Stores throughout the country.

HARVARD UNIVERSITY DENTAL
SCHOOL. The next year of this school begins
under the new plan, Sept. 28, 1876, and ends June 27,
1877, with a recess of one week at Christmas and another
in February. The teaching is consecutive through a
course of two years, the instruction of one year not
being repeated in the next; that of the first year being
identical with that of the Harvard Medical School and
by the same Professors. By this plan, the amount of
instruction given is double that of any other strictly den-
tal school, and at slightly increased cost. For informa-
tion, address THOMAS H. CHANDLER, Dean, 222 Tre-
mont Street, Boston, Mass.