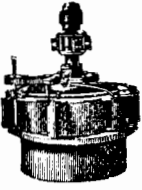


THE TRADE ENGINE.

Noiseless in operation—Perfect in workmanship—all light parts of Cast Steel. Every Engine indicated, and valve corrected to give the highest attainable results.



The American Turbine Water Wheel.

Recently improved and submitted to thorough scientific tests by James Emerson, showing the following useful effect of the power of the water utilized, being the highest results ever known.

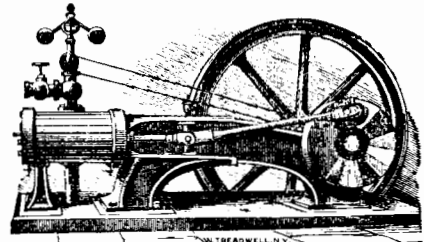
OVER 7,000 IN USE. BLAKE'S STEAM PUMP

Send for illustrated catalogue, 79 & 81 Liberty St., N. Y.

MAGNETS—Permanent Steel Magnets of any form or size, made to order by F. C. BEACH & CO., 263 Broadway, New York.

RISON'S IMPROVED TURBINE.

Has the tightest gate and most durable Has yielded the highest percentage of any wheel tested at Hilokey or else where.



Cooper's Engine & Mill Works, MANUFACTURERS OF First-Class Stationary Engines,

First—With single slide valve cut-off by lap at 1/2 stroke. Second—With indexed cut-off valves arranged to close at any part of stroke.

PORTABLE ENGINES, of 8, 10, 20, and 25 Horse Power. IMPROVED HANGERS, COUPLINGS, FOUNTAIN BOXES AND SHAFTING.

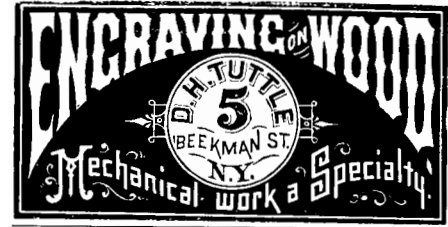
IMPORTANT FOR ALL LARGE CORPORATIONS AND MANUFACTURING CONCERNS.—Buerk's Watchman's Time Detector, capable of controlling, with the utmost accuracy, the motion of a watchman or patrolman, as the same reaches different stations of his beat.

THE FORMULA and Exclusive Rights of a valuable medicine for sale. Address JNO. A. THOMPSON, Jerseyville, Ill.



E. M. MAYO'S PAT. BOLT CUTTER.

FINE COAL AND ORE COLLECTION for Sale, low; ores and coals illustrate chiefly American mines—many Coals, Irons, Leads, &c., some native Silver, (Lake Superior), and Gold.



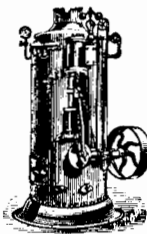
\$10 to \$1000 Invested in Stocks & Gold pay 20 percent a month. Send for particulars. Cambridge & Co., Bankers, 2 Wall St., N. Y.

BLAKE'S PATENT Stone and Ore Breaker Crushes all hard and brittle substances to any required size.

A FORTUNE FOR ALL in the Rubber Stamp Stencil and Stamp Works, Baltimore, Md.

\$475 A MONTH TO AGENTS. Address C. M. LININGTON & BRO., New York

ALCOTT LATHES, for Broom, Rake, and Hoe Handles. S. C. HILLS, 51 Courtlandt St., N. Y.



BOOKWALTER ENGINE.

The lowest-priced good Engine ever constructed; Boiler and Engine made of the best Charcoal Iron, Compact, substantial, economical, and easily managed.

3 Horse Power . . . \$250 00 4 1/2 " " " " " " 300 00 Delivered on Cars at Shops. JAMES & FOOS, 109 LIBERTY STREET, NEW YORK.

THE CHAMPION SILVER-STEEL SPRING MATTRESS, now greatly improved, has been before the public for several years, and continues to occupy its unrivalled position in the trade.

Use of double refined iron. No welds. All work done on the premises, from ore to finished bridges. Illustrated Album mailed on receipt of 75 cents.

FORGING & FINISHING MACHINERY, Fixtures and Tools complete for making guns, sewing machines, etc., to model, machine, and finish.

CIVIL AND MECHANICAL ENGINEERING AT THE RENSSAELER POLYTECHNIC INSTITUTE, Troy, N. Y. Instruction very practical. Advantages unsurpassed in this country.

MAHOGANY, WALNUT, ROSE, SATIN, HOLLY, SPANISH & RED CEDAR, and all kinds of HARD WOODS, in Logs, Plank, Boards and Veneers.

Geo. W. Read & Co., Mill & Yard 186 to 200 Lewis St., foot 5th & 6th Sts., E. R., New York.

Advertisement for Ready Roofing Co. of N.Y. featuring 'ROOFS' and 'READY ROOFING' with illustrations of roof structures.

Table listing 'A Set of 12 Steel Lathe Dogs' with specifications and prices.

\$10 A DAY. Employment for all. Patent Novelties. GEO. L. FELTON, 119 Nassau St., N. Y.

FOR SALE—AN UNFINISHED IRON, TWIN SCREW STEAM VESSEL, having double bottom and water-tight compartments.

Table listing specifications for the steam vessel: Length between Perpendiculars, Breadth of Beam, Depth to Main Deck, Displacement, Area of Midship Section, Number of Transverse Bulkheads.

Table listing specifications for engines: Two pairs, each pair driving one Screw; Diameter of Steam Cylinder, Stroke of Piston, Surface Condensers, area.

Table listing specifications for screws: Diameter, Pitch, Number of Blades.

Table listing specifications for boilers: Ten in number; Ordinary Horizontal Fire Tubular Type; Total Heating Surface, Grate Surface.

This vessel was intended to be completed for the State of New Jersey as an Ironclad. The plans were prepared and the work was carried on under the direction of General GEORGE B. McCLELLAN, U. S. A.

The funds appropriated for the purpose of completing the vessel not proving sufficient, the Legislature of the State of New Jersey has directed that a sale be made to the highest bidder. A Commission, consisting of His Excellency Gov. JOEL PARKER, of Trenton, Vice-Chancellor AMZI DODD, of Newark, Honorable Messrs. W. W. SHIFFER, and S. B. DOD, of Hoboken, has been appointed to effect such sale.

Bids endorsed PROPOSALS FOR THE PURCHASE OF IRON STEAMER OR OF PARTS THEREOF, may be addressed to the GOVERNOR OF THE STATE OF NEW JERSEY, by whom they will be received at Trenton, N. J., until 12 o'clock, M., on the second day of November next, at which time they will be publicly opened.

Blanks for proposals, and a pamphlet containing a detailed description of the vessel, as nearly completed, except as to armor and armament, may be obtained by addressing either member of the Commission or the undersigned. Permission to examine the vessel, and to inspect the premises, may be obtained (by intending purchasers) on application at the Dry Dock, where the ship now lies, or to the Consulting Engineer to the Commission, who will be prepared to exhibit drawings, to explain the structure of hull and machinery, and to give any other information respecting the vessel.

R. H. THURSTON, Consulting Engineer to the Commission, Hoboken, New Jersey, United States of America.

SHINGLE AND BARREL MACHINERY.—Improved Law's Patent Shingle and Heading Machine, simplest and best in use.

PORTABLE STEAM ENGINES, COMBINING the maximum of efficiency, durability and economy, with the minimum of weight and price.

IRON BRIDGES—CLARKE, REEVES & CO., PHOENIXVILLE BRIDGE WORKS. Office, 410 Walnut Street, Philadelphia, Pa.

Machinery, Wood and Iron Working of every kind. Leather and Rubber Belting, Emery Wheels, Babbitt Metal, &c.

Sturtevant Blowers. Of every size and description, constantly on hand.

Cold Rolled Shafting. Best and most perfect Shafting ever made, constantly on hand in large quantities.

Niagara Steam Pump. CHAS. B. HARDICK, 23 Adams St., Brooklyn, N. Y.

THE JOHN HARDICK Niagara Steam Pump. HUBBARD & ALLER, Brooklyn, N. Y.

PUNCHING AND DROP PRESSES. For the Best and Cheapest Address THE STILES & PARKER PRESS CO. MIDDLETOWN, CONN.

WOOD-WORKING MACHINERY GENERALLY. Specialties Woodworth Planers and Richardson's Patent Improved Tenon Machines.

\$5 & \$20 per day at home. Terms Free. Address GEO. STINSON & CO., Portland, Maine.

THE Union Iron Mills, Pittsburgh, Pa. The attention of Engineers and Architects is called to our improved Wrought-iron Beams and Girders.



Small Tools of all kinds; also GEAR WHEELS, parts of MODELS, and materials of all kinds. Castings of Small Lathes, Engines, Slide Hests, &c.

BANKRUPT'S SALE OF HORIZONTAL and Vertical Steam Engines. Also, new and second hand Machinist's Tools.

Todd & Rafferty Machine Co. MANUFACTURERS OF The celebrated Greene Variable Cut-Off Engine; Lowe's Patent Tubular and Flue Boilers; Plain Slide Valve Stationary, Hoisting, and Portable Engines.

SHINGLE & BARREL MACHINERY. EVARTS' IMP. HEADING AND SHINGLE SAW, STAVE CUTTERS, JOINTERS, EQUALIZERS, AND HEADING TURNERS.

FOR LEGAL ADVICE CONCERNING Infringements and Patents, consult R. B. McMASTER, Counsellor at Law, 9 & 11 Nassau St., Room 26, New York.

1871. SCHEENCK'S PATENT. 1871 WOODWORTH PLANERS And Re-Sawing Machines, Wood and Iron Working Machinery, Engines, Boilers, etc.

PATENT COLD ROLLED SHAFTING. The fact that this shafting has 75 per cent greater strength than any other in use renders it undoubtedly the most economical.

OTIS' SAFETY HOISTING Machinery. OTIS, BROS. & CO., NO. 348 BROADWAY NEW YORK.

R. BALL & CO., For Planing Mills, Car Shops, Sash, Blind and Do Makers, &c., &c. Send for Illustrated Catalogue and price list.



WOOD WORKING MACHINERY For Planing Mills, Car Shops, Sash, Blind and Do Makers, &c., &c. Send for Illustrated Catalogue and price list.

STONE SAWING MACHINERY. Merriman's Patent. Also, Hand and Steam DERRICKS & TRAVELLERS, THOMAS ROSS, Rutland, Vt.

MASON'S PAT'T FRICTION CLUTCHES are manufactured by Volney W. Mason & Co., Providence, R. I. Agents, L. D. BIRCKBECK, 60 Child Street, New York; TAPLIN, RICE & CO., Akron, Ohio.

P. BLAISDELL & CO., Worcester, Mass., Manufacturers of the Blaisdell Patent Upright Drills and other first-class Machinist's Tools.

NEW & IMPROVED PATTERNS.—MACHINISTS' TOOLS—all sizes—at low prices. E. GOULD, 77 to 113 N. J. R. Ave., Newark, N. J.

Andrew's Patents. Noiseless, Friction Grooved, or Geared Hoists, suited to every want. Safety Store Elevator, Prevent Accident, Rope, Belt, and Engine Break.

GLASS MOULDS for Fruit Jars, Lamps, Bottles, Ink Stands, etc., made by H. BRONKIE, 153 1/2 Ave. of the Americas, N. Y.

RICHARDSON, MERIAM & CO. Manufacturers of the latest improved Patent Planes and Woodworth Planing Machines.

SAMPLES OF MACHINES, TOOLS, and IMPLEMENTS, received, exhibited, and orders taken. A. M. PAXTON & CO., Vicksburg, Miss.

\$2400 Yearly to Agents. 54 new articles and the best Family Paper in America, with two \$5 Chromos. Family Journal, 300 Broadway, N. Y.

The Toll-Gate! Prize Picture sent free! An ingenious gem! 500 objects to find! Address, with stamp, E. C. ABBEY, Buffalo, N. Y.

PATENT Planing and Matching and Molding Machines, Gray & Wood's Planers, Self-oiling Saw Arbors, and other wood working machinery.

NEXT JULY, A WELL KNOWN FIRM of Engineers and Machinery Agents, with large connections at home and abroad, will open a ground-floor Warehouse, having windows fronting Queen Victoria Street and Cannon Street, City, London, England.

PATENTS Bought, sold, and introduced. F. T. H. RAMSDEN, Mechanical Engineer, Bryan Block, Chicago, Ill.

HUSSEY'S NATIONAL Cottage Architecture. New and Original Designs, Working Scale Drawings, and Details for all Styles of low-priced Houses.

WOODWARD'S NATIONAL ARCHITECT 1,000 WORKING DRAWINGS Plans, Details, Specifications and Estimates TWELVE DOLLARS, post-paid.

MONCKTON'S NATIONAL Six Dollars, post-paid. MONCKTON'S NATIONAL Six Dollars, post-paid. CARPENTER & JOINER. paid.

ORANGE JUDD CO., 245 Broadway, N. Y.

PATENTS The publishers of the SCIENTIFIC AMERICAN have acted as solicitors of patents in the United States and foreign countries for more than a quarter of a century.

Special examinations as to the patentability of inventions made, at the Patent Office, on receipt of model or drawing and description; cost for this search and report, \$5.

Trade Marks.—The necessary papers for securing protection to manufacturers and merchants in this country and abroad are prepared at this office.

Design Patents, for protecting artists and designers of any new ornaments work, are quickly and cheaply obtained through this office.

Foreign Patents are solicited in all countries where patent laws exist. Pamphlets, containing the cost and full particulars, mailed on application.

MUNN & CO., Publishers SCIENTIFIC AMERICAN, 37 Park Row, N. Y. BRANCH OFFICE—Corner F and 7th Streets, Washington, D. C.