

Crusher and harrow clod, Young & Worthan.....	142,755	Mill boring, F. E. Hahn.....	142,694	Sewing machine caster, E. R. Clark.....	142,615
Cutter head, E. Benjamin.....	142,669	Molds, blackwashing, J. B. Aston.....	142,661	Sewing machine hemmer, J. D. V. Eldredge.....	142,689
Derrick, J. E. Serrell.....	142,740	Molding machines, cutterhead for, J. Alloways.....	142,548	Sewing machine table lock, J. B. Logan.....	142,780
Dredger, J. F. Morse.....	142,577	Needle case, Marchant & Hart.....	142,689	Sewing machine treadle, M. H. Knapp.....	142,704
Drill and planter, seed, W. F. West.....	142,599	Needle sharpening device, Barnum <i>et al.</i> .....	142,552	Sewing machines, motor for, R. H. Atwell.....	142,551
Drill jackpost, etc., Eastman & Morris.....	142,619	Nut lock, K. H. Loomis.....	142,709	Shoes, manufacture of, C. W. Green.....	142,691
Electric regulator, T. A. Edison.....	142,688	Ore concentrator, J. A. Peer.....	142,646	Shook holder, J. I. Berry.....	142,553
Elevator, E. Boyden.....	142,555	Ore washer, J. A. Peer.....	142,647	Shutter, fireproof, A. Gottlieb.....	142,563
Elevator, hay, C. H. Kirkpatrick.....	142,635	Organ, reed, L. K. Fuller.....	142,690	Shuttle box mechanism, J. Schrack.....	142,736
Engine, reciprocating, A. Staley.....	142,747	Packing machine, A. Ralph.....	142,651	Skirts, etc., ornamenting felt, J. W. Blackham.....	142,554
Engine, rotary, J. E. Crisp.....	142,559	Packing, metallic piston, J. Massey.....	142,640	Sled brake, P. Gable.....	142,623
Engine, rotary, F. J. Hollenweger.....	142,629	Paper pulp, wood, T. B. Armitage.....	142,550	Spray jet, adjustable, A. Nickerson.....	142,719
Engine, steam, R. T. P. Allen.....	142,660	Pavement composition, S. J. Whiting.....	142,601	Square, try, W. H. Cooper.....	142,557
Engine heater, steam fire, W. F. Shaw.....	142,589	Paving composition, A. Thiele.....	142,594	Stamp, fountain hand, F. J. Coutant.....	142,617
Envelope machine feed box, E. Allen.....	142,606	Pile or fagot, J. Barker.....	142,566	Staples, machine for making, W. Mallek.....	142,574
Evaporating liquids, J. J. Johnston (r).....	5,570	Piston, C. B. Allen.....	142,659	Stove, heating, Little & Nation.....	142,707
Fence post socket, G. W. & J. B. Durant.....	142,687	Pitman, J. H. Carothers.....	142,611	Stove pipe for vessels, J. Hall.....	142,567
Fire arm, breech loading, W. C. Hicks (r).....	5,564	Pitmen with shafts, connecting, R. Cleaveland.....	142,616	Stove, reservoir cooking, D. H. Nation.....	142,717
Fire extinguisher, F. Latta.....	142,687	Planing machine cutterhead, E. G. Richards.....	142,731	Stove oven attachment, Craine <i>et al.</i> .....	142,558
Flask, powder, M. Clik.....	142,614	Planter, corn, E. C. Brown.....	142,675	Straw cutter, R. A. Rash.....	142,726
Floor refrigerator, etc., Smith & Schmid.....	142,745	Planter, corn, N. C. Lamb.....	142,706	Table, extension, J. M. Sackman.....	142,586
Furnace, malleable iron, D. R. Nash.....	142,716	Planter, corn, G. W. Starrett.....	142,656	Table, ironing, A. J. Palmberg.....	142,645
Furnace, oxide of zinc, J. G. Lang.....	142,571	Platform, dumping, F. Peteler.....	142,724	Tallow, etc., cooling, A. Smith.....	142,744
Gage, splitting, T. Rice.....	142,584	Plow and cultivator, shovel, A. Smith.....	142,655	Thrashing power, traveling, R. W. Faris.....	142,621
Glass molds, treating, J. Lydiate.....	142,573	Press, hay or cotton, D. A. Nelson.....	142,718	The machine, C. J. Merrill.....	142,576
Hammer, drop, C. Peck.....	142,723	Printing press, J. G. Peterson.....	142,648	Tobacco ridger, J. R. Whittemore.....	142,753
Hammer for planishing iron, W. D. Wood.....	142,754	Printing press ink, E. Allen.....	142,607	Tool handle, W. B. Hill.....	142,598
Harrow, R. L. Taylor.....	142,593	Propeller, chain, E. P. Russell.....	142,658	Trap, stench, J. Semple.....	142,739
Harvester rake, J. Irvine.....	142,632	Pump, rotary, C. P. Holmes.....	142,696	Trunks, etc., strap fastening for, W. Grinstead.....	142,565
Harvester rake, J. L. Owens.....	142,644	Pump, hand lever, O. T. Earle.....	142,562	Type, arranging, D. B. Ray.....	142,652
Hatchway, self-closing, A. B. See.....	142,738	Purifier, middlings, L. S. Reynolds.....	142,729	Tyresetter, J. Palca (r).....	5,565
Hay, sling for loading, G. W. Long.....	142,638	Purifier, flour and middlings, E. N. Lacroix.....	142,705	Tyre tightener, M. E. Jacobs.....	142,633
Heater for steam fire engines, W. F. Shaw.....	142,589	Railroad cattle guard, Tunison <i>et al.</i> .....	142,596	Valve, main stop, C. W. Isbell.....	142,760
Hinge for blinds, lock, T. Clucas, Jr.....	142,679	Railroad rail, J. B. Johnston.....	142,701	Valve, steam, H. P. Jones.....	142,702
Horseshoe, A. W. Smith.....	142,590	Rail, fastening for, B. W. Buchheit.....	142,610	Vegetable cutter, G. W. Parker.....	142,580
Horseshoe, sectional, J. D. Abbott.....	142,547	Rail, joint for hollow, R. S. Sanborn.....	142,654	Veneers, cutting, J. A. Squires.....	142,591
Horseshoe nails, D. Turbayne.....	142,597	Railroad, street, J. R. Beckett.....	142,668	Ventilating building, L. B. Valk.....	142,598
Horseshoe nail die, A. H. Caryl.....	142,678	Railroad switch, D. E. Brackett.....	142,673	Vessels, center board for, J. Call.....	142,677
Indicator, distant heat, J. A. Read.....	142,727	Railroad switch stand, R. A. Rash.....	142,725	Vessels, relieving grounded, W. R. Righton.....	142,734
Jack, lifting, I. A. Crippen.....	142,680	Rake, revolving horse, G. Penisten, Sr.....	142,551	Wagon brake, W. F. Osborn.....	142,579
Jeweler's show case, Martin & Studer.....	142,575	Refrigerator, oyster, etc., J. C. Jones.....	142,703	Wagons, end gate for, F. Grundy.....	142,566
Journal packing rack, W. H. Humphrey.....	142,698	Rivet, J. E. Wooten, (r).....	5,567	Washing machine, S. Budlong.....	142,676
Kettle and pan scraper, E. J. Whitman.....	142,602	Roof, metallic, I. S. Mettler.....	142,641	Washing machine, C. W. Sherer.....	142,742
Knife, drawing, E. Parker.....	142,720	Sad irons, etc., varnishing, W. J. Reagan.....	142,728	Watch case latch, J. C. Duerber.....	142,684
Lamp, L. Berns.....	142,609	Sandpapering machine, H. L. Haggood.....	142,626	Water cooler and filter, combined, W. J. English.....	142,620
Lamp, F. Rhind.....	142,730	Sash balance, L. S. Wright.....	142,634	Water filter, J. Pearson.....	142,722
Lamp, street, J. S. Hagerty.....	142,693	Sash fastener, L. L. Bates.....	142,667	Water meter, T. T. Prosser.....	142,650
Lard and tallow, drying, A. Smith.....	142,743	Saw filing and setting machine, N. G. Ross.....	142,555	Water strainer, F. W. Mase.....	142,711
Last block fastener, L. S. Wright.....	142,603	Saw table, circular, H. C. Rosin.....	142,733	Water wheel, turbine, A. A. Herriman.....	142,623
Lever for drawing timber, J. N. Eames.....	142,618	Saws, gage for gang, N. C. Moody.....	142,643	Wind mill, O. B. Knapp.....	142,636
Lock, permutation, P. W. Hall.....	142,695	Sawing machine, E. Inman.....	142,699	Window screen, J. F. Scherpe.....	142,735
Loom picking mechanism, W. Stearns.....	142,592	Sawing machine, spoke, J. L. Thralls.....	142,749	Wood rails, machine for dressing, H. G. Angle.....	142,608
Mandrel, tube welding, H. K. Flagler.....	142,622	Screw blanks, machine for threading, E. Croft.....	142,560	Wood drying frame, E. Duffee.....	142,561
Mechanical movement, W. Oliver.....	142,578	Separator, grain, J. W. Breese.....	142,672	Wrecking apparatus, McGroder & Tiedemann.....	142,712
Metal working machine, compound, H. B. Sevey.....	142,588	Sewer basin for street corners, J. H. Boschen.....	142,671	Wrench, W. J. Innis.....	142,570

**APPLICATIONS FOR EXTENSIONS.**  
 Applications have been duly filed, and are now pending for the extension of the following Letters Patent. Hearings upon the respective applications are appointed for the days hereinafter mentioned:  
 26,454.—RAILWAY SWITCH.—W. Wharton, Jr. Nov. 26.  
 26,481.—PLATFORM SCALE.—T. Fairbanks. December 3.  
 26,486.—PIPE MOLDING.—J. Ferth *et al.* December 3.  
 26,513.—NAIL PLATE FEEDER.—J. Newell. December 3.

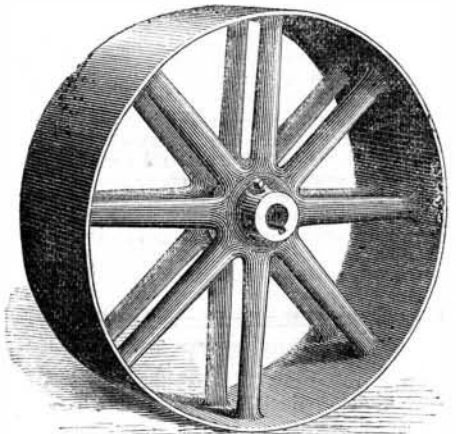
**EXTENSIONS GRANTED.**  
 15,861.—NUT MAKING MACHINE.—W. E. Ward.  
 25,434.—COTTON SCRAPER.—J. H. Mitchell.  
 25,395.—BOOT HEEL.—S. Dodge, Jr., *et al.*  
 25,442.—PORTABLE FURNACE, ETC.—D. R. Prindle.  
 25,473.—SCALE.—A. Turnbull.

**DISCLAIMER.**  
 24,442.—PORTABLE FURNACE, ETC.—D. R. Prindle.

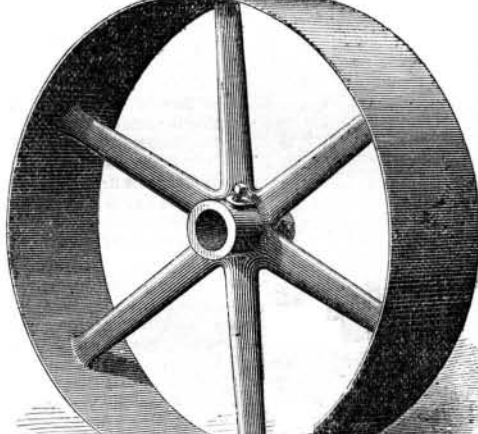
**DESIGNS PATENTED.**  
 6,874.—SAD IRON HANDLE.—J. Hargrave, Cincinnati, Ohio.  
 6,875.—CHAIRS.—G. M. Harwood, Troy, N. Y., *et al.*  
 6,876.—LAMP STAND.—W. H. Perkins, Meriden, Conn.  
 6,877.—FIRE PLACE.—W. S. B. Sexton, Baltimore, Md.  
 6,878, 6,879.—INKSTANDS.—B. Brower, New York city.  
 6,880.—RUCHE HOLDER.—D. Kisch, New York city.  
 6,881.—MONUMENT.—M. Van B. Mitchell, Zanesville, Ohio.

**TRADE MARKS REGISTERED.**  
 1,442.—LICORICE PASTE.—D. V. Arguimbau, Brooklyn, N. Y.  
 1,443.—WHISKY.—Derby & Day, St. Louis, Mo.  
 1,444.—WATCH CASE.—J. C. Duerber, Cincinnati, Ohio.  
 1,445.—HAT.—J. S. Fayerweather & Co., Danbury, Conn.  
 1,446.—MEDICINE.—Fenton Manuf. Co., Cleveland, Ohio.  
 1,447.—SEEDS.—D. M. Ferry & Co., Detroit, Mich.  
 1,448.—WHISKY.—W. M. Fless & Co., New York city.  
 1,449.—HOSIERY.—Smyth & Co., Balbriggan, Ireland.  
 1,450.—GOLD RINGS.—Duerber Watch Case Co., Cinn., O.

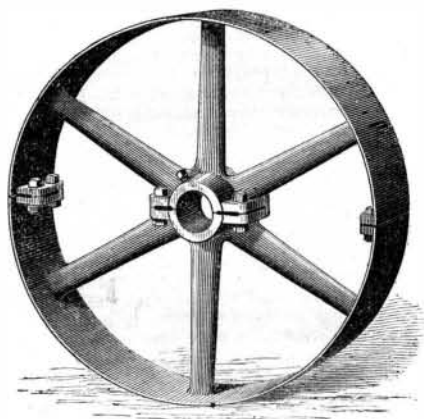
**SCHEDULE OF PATENT FEES:**  
 On each Caveat.....\$10  
 On each Trade-Mark.....\$25  
 On filing each application for a Patent (17 years).....\$15  
 On issuing each original Patent.....\$20  
 On appeal to Examiners-in-Chief.....\$10  
 On appeal to Commissioner of Patents.....\$20  
 On application for Retissue.....\$30  
 On application for Extension of Patent.....\$50  
 On granting the Extension.....\$50  
 On filing a Disclaimer.....\$10  
 On an application for Design (3½ years).....\$10  
 On an application for Design (7 years).....\$15  
 On an application for Design (14 years).....\$30



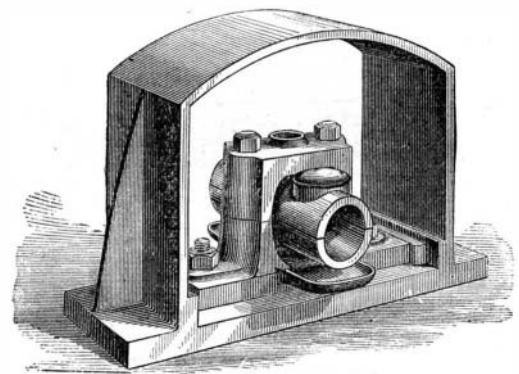
DOUBLE ARM PULLEY.



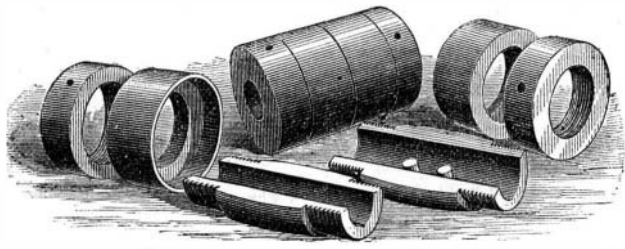
PLAIN PULLEY.



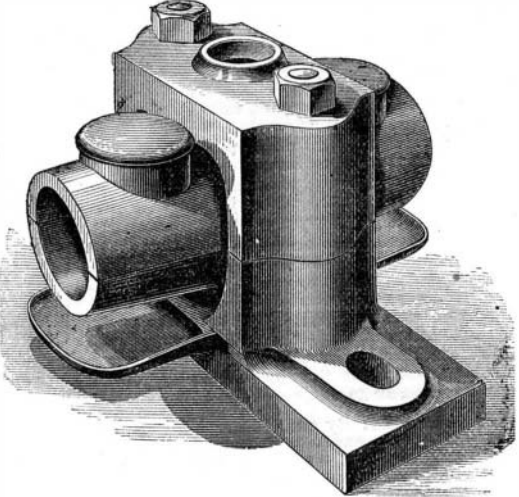
SPLIT PULLEY.



WALL BEARING.



COLLINS' PATENT COUPLING.



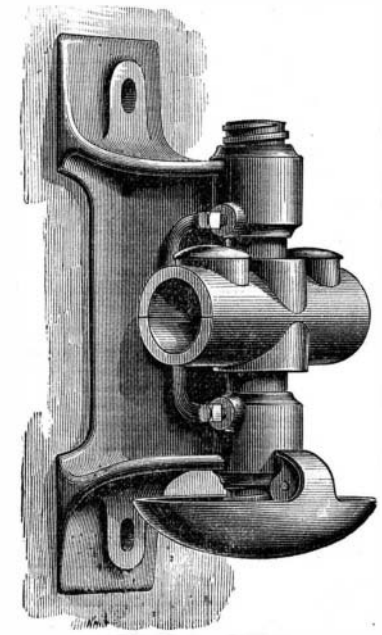
PILLOW BLOCK.

**AMERICAN IRON WORKS.**  
 Warehouse and Office:  
 Second and Third Aves. and Try Street,  
 PITTSBURGH, PA.

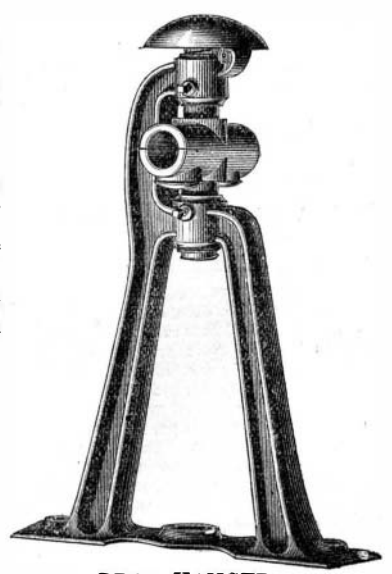
We would respectfully invite the attention of all parties using line shafting to the accompanying illustrations of our improved patterns of Hangers, Pulleys, Couplings, etc.  
 To meet the demands from all sections of this country and Canada for our celebrated Patent COLD ROLLED SHAFTING, fitted up complete with Pulleys, Couplings, Hangers, &c., we have, at very great expense, completed patterns for these articles which we think are undoubtedly superior to any to be had elsewhere, in point of convenience and neatness combined with maximum strength.  
 The COLLINS COMPRESSION COUPLING has many advantages over any other, and their superiority is fully established by long and successful use in all sections of the country. Our HANGERS being self-adjusting and fitted with bearings having more than ordinary lengths, will commend themselves to all in search of the best. The SUPERIORITY of our PULLEYS will be apparent from the accompanying representations; they are all accurately turned and balanced.  
 It is needless to refer to the merits of our Patent Cold Rolled Shafting, as its long and, at present, almost exclusive use in the leading mills has established the fact of at least 75 percent greater strength, and vastly greater perfection of size and finish, than turned iron.  
 To a line of Cold Rolled Shafting, fitted up by us with our Couplings, Pulleys and Hangers, was awarded the **PREMIUM MEDAL** at the VIENNA EXPOSITION, for its Superiority over any other kind, in point of strength, perfect finish and accuracy. This is but a confirmation of the universal opinion of the Public, everywhere.  
 We solicit the correspondence of those in want of line Shafting, Hangers, Pulleys, &c.; or of Shafting for other purposes requiring unusual strength, exact size, and perfect finish.

**JONES & LAUGHLINS.**

Stocks kept in store, also, by  
 JONES & LAUGHLINS, 190, 192, 194 & 196 South Canal Street, CHICAGO, ILL.  
 PEIRCE & WHALING, MILWAUKEE, WIS.  
 GEORGE PLACE & CO., 121 Chambers Street, NEW YORK.  
 FULLER DANA & FITZ, 110 North Street, BOSTON, MASS.



POST HANGER



DROP HANGER.