

dentially. This passage permits withdrawal after the bottle is inverted of that part of the contents of the bottle which is not forced out through the first-named passage by pressure of the gas.

Heating and Lighting.

FURNACE ATTACHMENT.—F. L. WATSON, Leeds, England. The object of this invention is to provide an apparatus, arranged for cooling the clinkers, cinders, or like hot material discharged from the furnace, for recovering the heat contained in the hot material by heating air, and for forcing the heated air into the fire box of the furnace, to insure complete combustion of the fuel burning in the box.

FUEL-REGULATOR.—C. B. WIESER and F. E. WIESER, Paso Robles, Cal. The cylinder in this invention has a working piston in communication with the boiler pressure, with means in connection with the piston for moving the fuel regulating valve in a direction to cut down fuel supply when the piston is removed by the steam pressure in one direction, and means tending to move the piston in the opposite direction against the steam pressure, the last means being variable, whereby it is possible to maintain desired boiler pressure within certain limits.

Legal Notices

PATENTS

INVENTORS are invited to communicate with **Munn & Co., 361 Broadway, New York, or 625 F Street, Washington, D. C.**, in regard to securing valid patent protection for their inventions. **Trade-Marks and Copyrights** registered. **Design Patents and Foreign Patents** secured.

We undertake all **Patent, Trade-Mark and Copyright Practice**, both before the **Patent Office** and the **Courts**, and we have special facilities for handling **Infringement** and other suits in Federal and State Jurisdictions.

A **Free Opinion** as to the probable patentability of an invention will be readily given to any inventor furnishing us with a model or sketch and a brief description of the device in question. All communications are strictly confidential. Our **Hand-Book on Patents** will be sent free on request.

Every patent secured through us receives special notice in the Scientific American.
Ours is the **Oldest agency** for securing patents; it was established over sixty years ago.

MUNN & CO., 361 Broadway, New York
Branch Office, 625 F St., Washington, D. C.

INDEX OF INVENTIONS

For which Letters Patent of the United States were issued for the Week Ending January 5, 1909,

AND EACH BEARING THAT DATE
[See note at end of list about copies of these patents.]

Abdominal supporter and suspensory, P. Zuckriegel	908,533
Acetylene burner, A. Bray	908,732
Acid, making sulphuric, H. Petersen	908,696
Advertising apparatus, W. F. Gill	908,854
Advertising automaton, D. F. Brown	908,734
Advertising device, Salter & Hutchinson	908,702
Aeronautic apparatus, G. A. Metcalf	908,794
Agricultural implement, A. C. Anderson	908,721
Air brake attachment, T. J. Crawford	908,648
Air compressor automatic governor, C. Norland	908,692
Air lock, H. Japp	908,866
Alfalfa grinder, T. Ponsar	908,801
Alkali metal amalgams, apparatus for decomposing, C. F. Carrier, Jr.	908,545
Animal cleaning apparatus, C. Hammer	908,991
Annealing box, J. F. Campbell	908,949
Annealing furnace, J. C. Swindell	908,902
Ash receptacle, A. Eichler	909,070
Automobile, J. L. Fay	909,073
Automobiles and other vehicles, safety fender or guard for, F. J. Graf	908,561
Awning frame, J. W. Richards	909,119
Awning rollers, etc., intermediate support for, J. H. Channon	908,954
Bag seal, E. J. Brooks	908,945
Ball mill, R. Beneke	908,834
Bandage support, C. M. Cooke	908,959
Barrel construction, molded, J. H. George	908,557
Barrel stand, R. Dumessil	908,769
Barrels, machine for cutting head linings for, L. Y. Williams	909,045
Bath-tub trap and outlet construction, J. F. Eichenlaub	908,651
Bearing, ball, G. O. Leopold	908,872
Bed-spring, W. W. Vincent	908,524
Beds, etc., gate for, H. & A. Thurm	908,904
Bedsteads, lacquering, W. W. Vincent	908,911
Beer tapping device, P. F. Cox	908,447
Bell, call, S. Katz	909,092
Beverages, composition of matter for use in preparing fermented, M. Wallerstein	908,630
Binder shocking attachment, W. H. Perrin	908,695
Binder, temporary, L. M. Morden	908,596
Blade-sharpening apparatus, J. W. Leslie	909,098
Block mold, H. Bresser	908,944
Board gage, multiple, B. D. Stevens	908,513
Boiler, H. O. Keferstein	908,574
Boiler feed water, apparatus for treating, M. Miller	909,008
Boiler feeding apparatus, N. E. Nash	909,013
Boiler furnace, P. H. McGiehan	908,879
Boiler, superheater, J. C. Parker	908,882
Boiler tube cleaner nozzle, R. W. Hamann	908,565
Bolting machine, A. H. McCutchan	908,486
Book, key, M. C. Elliott	908,456
Book-making machine, Walstead & Moe	909,130
Book-strap handle, H. Backstrom	908,438
Bottle, F. C. Turner	908,622
Bottle, non-refillable, M. V. Whiting	908,718
Bottle rinsing machine, E. Court	908,446
Bottle stoppering machine attachment, M. H. Mulkey	908,688
Box, J. A. Liebler	908,784
Box, T. L. Morgan	909,009
Brazelet, E. L. Anderson	908,931
Brake shoe, J. F. Norman	909,015
Bridges, pillars, etc., compressive and tensile bar for, W. Lubbecke	908,587
Briquets, treating, B. Wagner	908,912



Mechanical engineers of authority who have inspected the Premier plant and observed its shop practice have declared the

Premier

"The Quality Car"

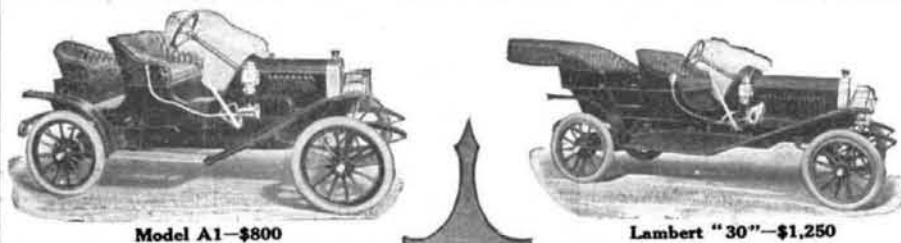
to be "the car of standard practice par excellence."

While possibly more features of advanced design are found in the Premier than in any other of the leading American cars, you may be assured that they are mechanically correct.

It is this combination of correct design and sound shop practice that gives the Premier its prominence as a simple, reliable and durable car.

Premier Motor Mfg. Co.
Indianapolis, Ind.

R. M. Owen & Co.
Distributors
East, North and Northwest



Model A1—\$800

Lambert "30"—\$1,250

LAMBERT FRICTION DRIVE CARS

The Economical Automobile

ONE thing, and one thing only, makes possible the manufacture of the Lambert Car at a cost permitting us to sell it at the low price we do.

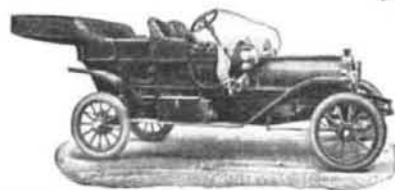
This one thing is the simple Lambert Friction Drive transmission of which the Scientific American has said: "The simplicity of this device is as great as its antiquity. Its cost of maintenance is extremely low, while its reliability is very great."

The cost of producing this most efficient (proven) transmission is so much lower than the cost of any type of the complicated gear transmission that we can—and do—put more real automobile worth into every Lambert Car than the manufacturer of any gear-transmission car can give for the same money.

The Lambert Car—each of our six models—has a full dollar's worth of power, speed, endurance, style and finish for every dollar of the price—and more too, if judged by ordinary standards. Each Lambert model, from the \$800 Runabout—Model A-1—up to the big roomy 7 passenger Lambert at \$2,000, is a positive leader in its class—the choice of people who "find out" before they buy.

We want you to "find out." Let us tell you more about the Lambert. Write for catalogue. Address, Buckeye Mfg. Co., 1814 Columbus Avenue, Anderson, Indiana.

Buckeye Mfg. Co., Anderson, Ind.



Model 19—\$1,750



Model B2—\$2,000

Brooder or foster mother for chickens, R. Miller	908,795
Broom holder, E. M. Gildemeister	908,558
Brush, L. O. Ekrem	908,652
Brush, A. R. Wiens	908,823
Brush, dusting, J. H. Channon	908,953
Buckle, D. de Lancy	908,582
Bug extractor, T. Thornburg	908,520
Burglar alarm, J. Wells	908,918
Burial receptacle, J. H. Todd	908,628
Burner, I. F. Zimmerman	908,656
Butter, manufacture of, J. V. M. Risberg	908,937
Button setting machine, D. A. Carpenter	908,932
Button setting machine, C. Wooster	909,047
Cabinet, I. H. Athey	908,830
Calculating machine, W. R. Bonham	908,731
Calliope, pneumatic, S. V. Day	908,968
Cam wheel, adjustable, G. H. Mallam	908,790
Camera film pack holder, A. H. Wright	908,531
Car antifriction center bearing, railway, J. F. O'Connor	909,106
Car antifriction side bearing, railway, J. F. O'Connor	909,107
Car, ballast plow, H. S. Hart	908,461
Car coupling, C. A. Dunn	908,722
Car coupling, mine, T. C. Nation	908,880
Car door fastener, F. O. Dohlin	908,452
Car draft rigging, E. L. Barber	908,936
Car, dump, S. Otis	908,489
Car grain door, railway, M. Paulson	909,111
Car, hand, M. B. Lloyd	908,785
Car, push, G. C. Wortman	908,635
Car side stake, W. S. Atwood	909,128
Car, war, D. W. Meacham	908,793
Car wheel, P. J. Garrison	908,659
Car wheel, mine, Parks & Davis	909,112
Cars or other vehicles, antifriction bearing for railway, J. F. O'Connor	909,108
Cars, etc., self-locking seal for, I. C. Reesor	908,503
Carpet stretcher, W. Fagan	908,972
Cart, folding, F. G. Lyon	908,472
Carton filling machine, J. B. Fallon, Jr.	908,457
Carving machine, M. A. Cuming	908,844
Cast-off, J. F. Molloy	908,480
Casting, H. D. Zehrbach	908,828
Cattle guard, J. McCluskey	908,600
Cellulose solutions, production of, E. Crumiere	908,754
Chain, conveyer, G. F. Conner	908,750
Chain, drive, B. G. Berrien	908,642
Chair iron, H. W. Bolens	908,730
Check canceling box, waiter's, J. T. Hicks	909,088
Cheese cutter, W. A. McElney	908,878
Chicken picking device, Bainter & Berling	908,935
Churn, Bauer & Brown	908,729
Churn, E. Moody	908,796
Churn, W. W. Bland	909,054
Churning apparatus, White & Jarvis	908,824
Cigars, packing, C. G. Singley	908,809
Clamp, See Rail clamp	
Clamp, O. B. Perkins	908,884
Clip, F. R. Baker	908,537
Clock, E. A. Bazzett	908,938
Clock dial, R. V. Longtime	908,786
Clock lockwork, striking, C. M. Gearing	908,767
Clock, time registering, J. & A. Dey	908,971
Cloth, gummed, E. G. Lang	908,780
Cloth, thin place detector, Freeman & Eubanks	908,459
Clothes drier, W. S. Morgan	908,481
Clothes line reel, A. Wolfyneck	908,927
Clothes pounder, R. H. Standing	908,621
Clutch, etc., electrical, A. P. Steckel	908,707
Coal cutting machines, dust preventive attachment for, A. E. Wood	908,928
Coaster brake, back pedaling, F. S. Ellett	908,455
Cock, stop, W. G. Westwater	908,717
Coherer, F. G. Sargent	908,504
Collapsible bracket, H. Lanham	908,781
Collar, shirt, C. Ryan	908,502
Collecting and delivering apparatus, automatic, P. M. Main	908,589
Combination lock, keyless, S. J. Nielsen	908,691
Combined table, J. L. Nail	908,487
Concentrating apparatus, M. E. Darrow	908,966
Concentrating table, W. G. Dodd	908,758
Concrete construction for piers and docks, reinforced, Lawrence & Lackey	908,783
Concrete floor construction, reinforced, W. Gabriel	908,658
Concrete manhole cover, reinforced, J. P. Rogers	908,805
Condenser, J. S. Stone	908,814
Conveyer, foldable, C. A. Radcliff	908,609
Conveyer, making helicoid or spiral, C. O. Gustavsen	908,859
Conveyers, machine for making helicoid or spiral, C. O. Gustavsen	908,860
Cooker, steam, S. J. Finch	908,850
Cooking, C. B. Trescott	908,907
Cooling structure, P. G. Toepfer	908,905
Cork, E. Tugendreich	908,909
Corset, V. E. Mack	908,789
Corset clasp fastener, C. F. Plummer	909,019
Cotton boll gatherer, J. F. Appleby	908,637
Cotton compress machinery, Jones & Vincent	908,676
Cotton picking finger, J. F. Appleby	908,638
Cotton seeds, etc., apparatus for coating, L. C. Bulkley	908,443
Crank and yoke connection, F. C. Olin	908,605
Crate, J. M. Ewart	908,983
Crate, collapsible, Forkner & Milum	908,988
Cream bowl cover, M. B. Barron	909,052
Crib, Phyllis & Booker	909,113
Crutch attachment, J. W. Ricks	909,129
Cue chalk, automatic, W. F. Clayton, Jr.	908,956
Cuff holder, C. P. Clark	908,745
Cultivator, P. Lochtin	908,874
Cultivator, celery, W. L. Bonney	908,645
Curtain or shade fixture, adjustable, A. A. Smith	908,810
Curtain stretcher, C. W. Ballou	908,640
Cutter guard, A. Rasmussen	909,116
Cutter head, G. Russell	909,025
Cycle changeable speed gearing, motor, C. H. Lang	908,583
Dental plate, E. Telle	909,038
Dental plate and manufacturing the same, E. Telle	908,626
Dental plates, attaching teeth to, E. Telle	908,627
Deposit and collection receptacle, J. Hartman	908,770
Dish, W. C. Anderson	908,723
Dish mop, C. A. Mason	908,791
Disinfectors, interior container for drip, Z. G. Sholes	908,508
Display rack, H. B. Cloud	908,548
Door check, M. J. Flynn	908,074
Door hanger, G. A. Swineford	909,036
Door hanger, adjustable, A. Benson	908,936
Door hanger track, H. L. Ferris	908,849
Door lock, sliding, Kreutzer & Jones	908,581
Door operating mechanism, dumping, F. Seaberg	908,505
Door securer, F. F. & M. F. Dunn	908,763
Double bit, J. G. Williamson	908,824
Drain pipe, metal, J. A. Sanders	909,027
Drawbridge, M. Waddell	908,717
Dredge, gold, H. J. Clark	909,063
Dredge suction mouthpiece, H. J. Clark	909,062
Dress form, C. A. Ufford	908,910
Drill, D. W. Rowlands	909,124
Drinking cup, C. C. Sprinkle	908,706
Drinking fountain, automatic, K. Selter	908,506
Duplicating machine, rotary, Glover & Hunter	908,990
Dust extractor, portable vacuum, C. J. Harvey	908,992
Dye and making same, monoazo, W. Konig	908,580
Egg case fastener, J. H. Schneider	908,612
Egg crate, S. A. Hamilton	908,663
Electric bell, E. P. Steen	908,899
Electric block signal, J. G. O. & I. D. Combs	908,748
Electric fan, oscillating, H. S. Brown	908,735
Electric machine brush, dynamo, E. T. Mug	908,483
Electric machine, dynamo, E. T. Mug	908,484
Electric machine electric current governor, dynamo, Rosenbaum & Voght	909,120
Electric machine of the inclosed type, dynamo, C. E. Lord	908,686
Electric motor, J. Burke	909,057
Electric railway signal, C. H. Smith	908,895
Electric signal bell, H. W. Eden	908,848
Electric switch, rotary snap, C. G. Perkins	908,694
Electrical connector, G. A. Schreier	909,030
Electrical heating apparatus, E. L. van Dolson	908,712